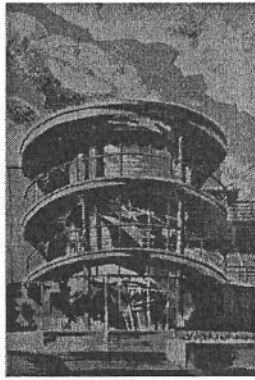


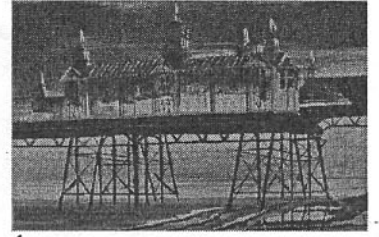
3



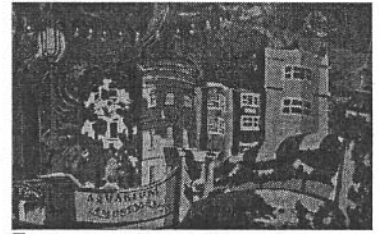
4



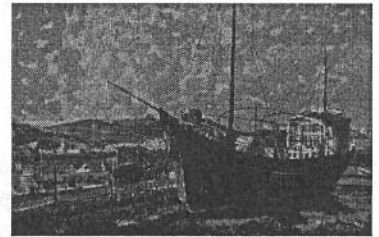
5



6



7



8

Seaside Lithographs, 1986. These eight lithographs of views on the south coast of England were commissioned by the *Spectator* and issued as a portfolio with texts. Recollections of the British topographical artists of the mid twentieth century are combined with an inventive rendering of reflected summer clouds and sparkling glass. The subjects are Pugin's 1 - *St Augustine's Abbey*, 2 - *Ramsgate; Dungeness*; 3 - *Climping Beach*; 4 - *The Funicular and the Netshops at Hastings*; 5 - *The De La Warr Pavillion at Bexhill on Sea*; 6 - *Eastbourne — the Pier*; 7 - *Brighton — Nocturne; Shoreham Harbour*;

Items on display in cases

Small case

Fireplaces, scraperboards and book, 1988. A Christmas-book variation on Piranesi's celebrated *Diverse maniere d'adornare i cammini* [Various ways of ornamenting fireplaces] published at Rome in 1769.

Large case

Peepshow/Toy Theatre. Alan Powers has had a lifelong association with the paper and cardboard toy-theatres produced in nineteenth-century London, a continuation of the fascination which these stirring works of popular art held for British artists throughout the twentieth century. The made-up toy theatre here shows an original ecological and conservationist version of *Cinderella*, drawn in 2002 for publication in *Country Life*, with a text by Michael Hall. The peepshow of Mecklenburgh Square, near the artist's home is also in a nineteenth century fairground and popular art tradition. It is a miniature version of a painted overmantel commissioned for the editor's office at the *Spectator* magazine at 56 Doughty Street, c.1987.

Christmas Books, including *The Museum of Moisture* and *The Museum of Home*, 2002. The *Christmas Books* are a selection of small-format architectural, poetic, ecological and fantastical inventions printed as Christmas gifts for friends.