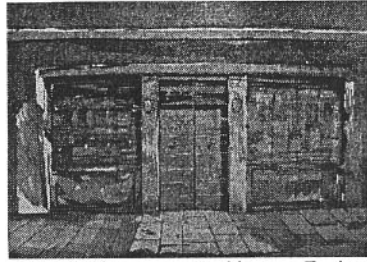
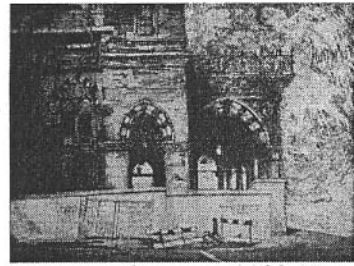


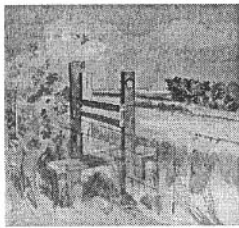
This *Welsh Gate* from the *Gates of England* series is a homage to the spirit of the twentieth century Anglo-Welsh poet and visual artist David Jones, and his particular concern with historical palimpsests and traces of the Romans in Britain.



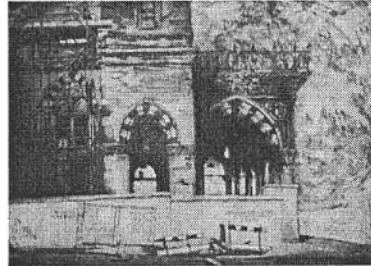
Shop in Cannareggio, Venice. Etching with aqua tint, 1991



St Pancras Chambers, 2008. This etching of St Pancras Station, which towers at the end of the London street where the artist has lived for quarter of a century, was made for the 50th anniversary celebrations of The Victorian Society



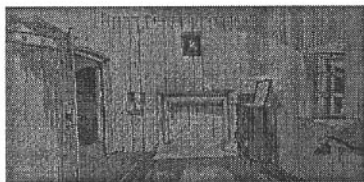
Suffolk Landscape with Stile This late summer pastoral is painted in Suffolk, near Aldeburgh, where Alan Powers spends many of his holidays.



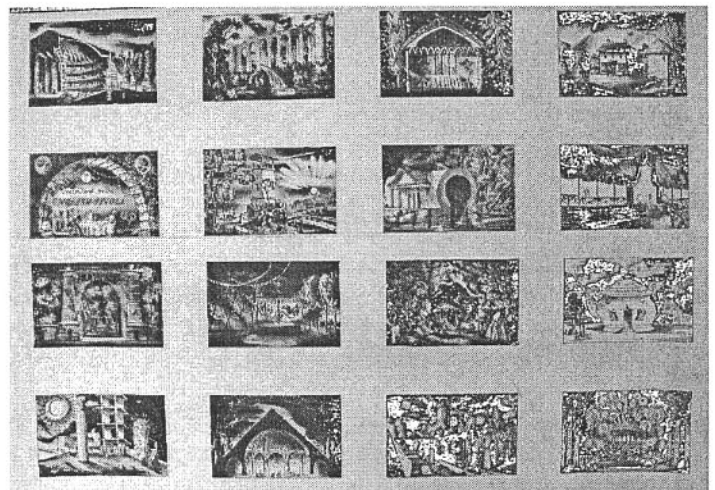
Sublime Boat House, 1988-2009. This ambitious architectural capriccio, working up a scene from *The English Tivoli*, with references to the architecture of C. N. Ledoux and the watercolours of J. M. Gandy, setting a sophisticated building in wild country, conveys the perception of the poetry of architecture which is central to the artist's work.



Walled Garden An evocation of thick planting contrasting with the precision of the painted lettering on the summerhouse.



Top Room, Kellie Castle Rather than painting the sumptuous rooms downstairs, the focus here is on a deserted top-floor room in what was then the Fife home of the sculptor Hew Lorimer, son of the architect Sir Robert Lorimer.



Uncut sheet of *The English Tivoli*, 1988, issued as a boxed artist's book with a short text. This sequence of lithographs proposes a pleasure-garden for London, on the model of the Tivoli Gardens in Copenhagen, located on the newly-opened M25 motorway. As well as architectural conceits, like the teapot tea-house and allusions to the fantastical architectural projects of the time of the French Revolution, the project has a streak of melancholy, especially visible in the plate of *The Metaphysical Garden*.