

# Taking Students to the NextLevel: Collaboration and a Sense of Belonging

Jenny Spinks and Jules Mundair

ADVANCE HE 2024

# STUDENT SUCCESS

## Belonging - acceptance

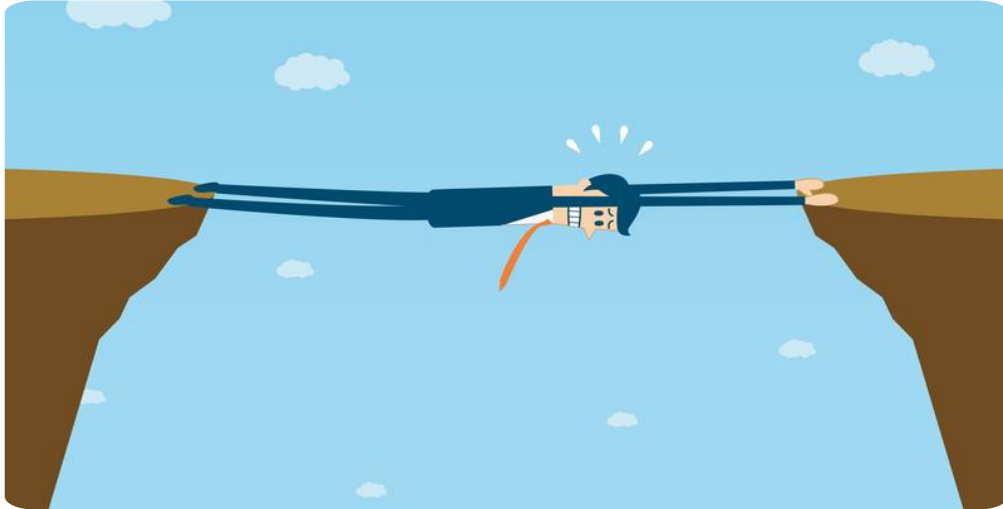
Sense of Community

Improves wellbeing and mental health

Engagement

Retention

# NextLevel:



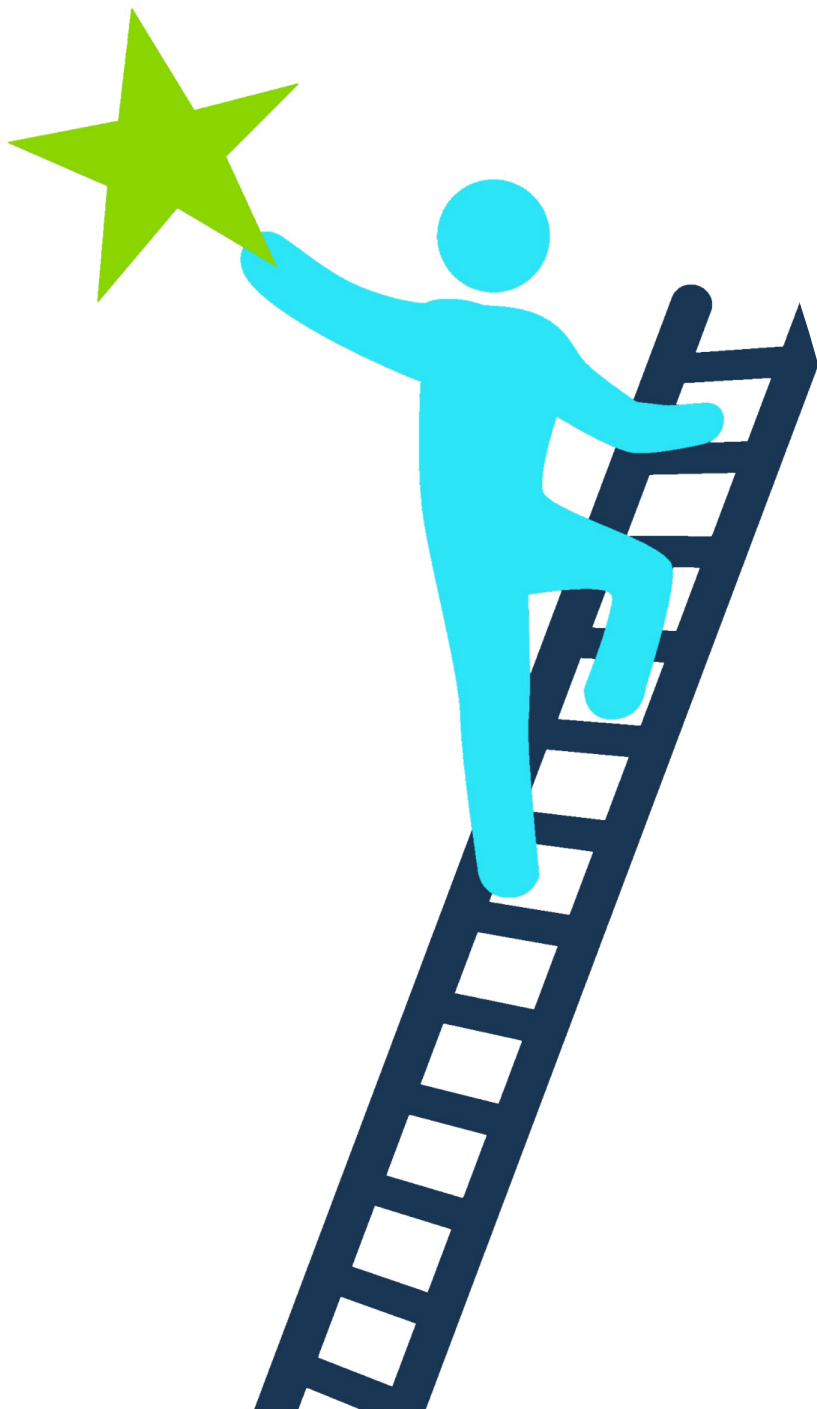
# Why?

- To bridge a skills gap
- To support transition
- Non-traditional courses - repeat or did not pass Year 1 of studies
- To support continuing students
- Supporting our widening participation plan



Opportunities to address  
these challenges





# NextLevel and Belonging

---

- Tett et al (2017), found by building positive relationships between staff and peers, transition to HE can be successfully managed.
- Kenney (2023) recognises the importance of belongingness, its impact including on academic success to graduation rates, overall.



# Our Welcome Week Events

# Social dimensions of learning

Normalising challenges

Building connections

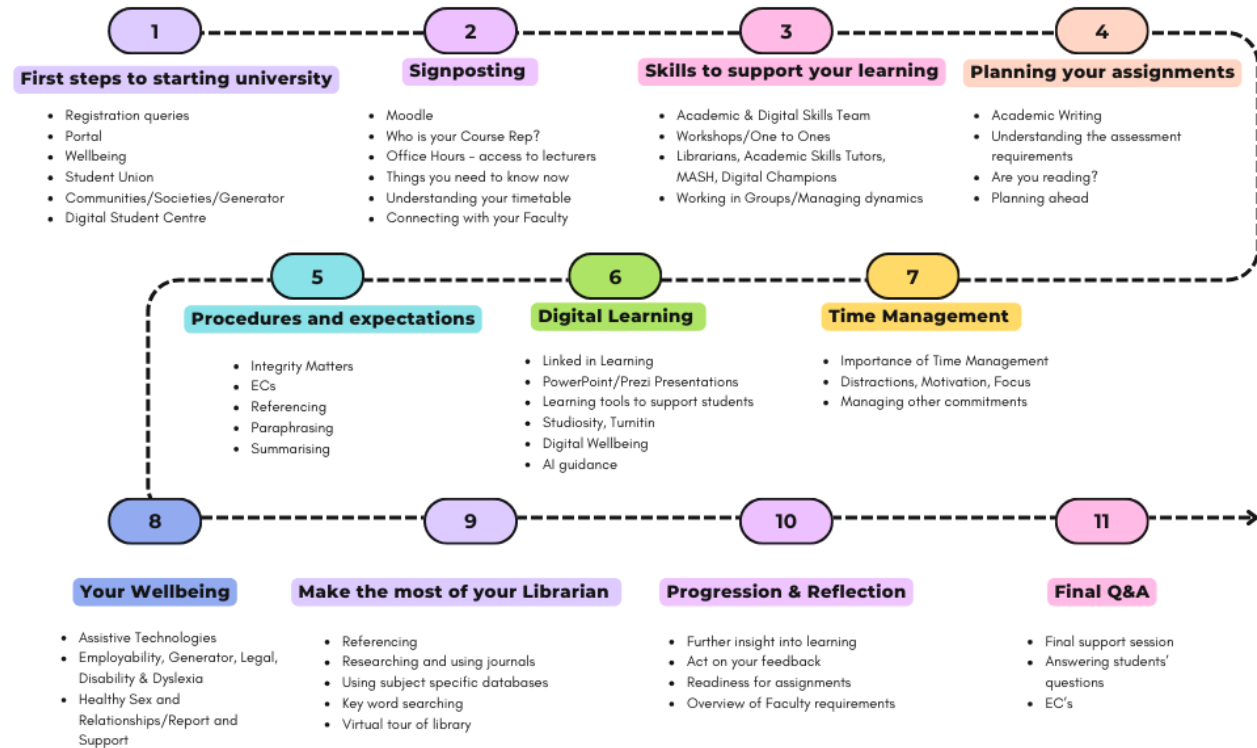
Active partnerships

Sense of self-efficacy

Sense of belonging

Achieving a sense of ownership

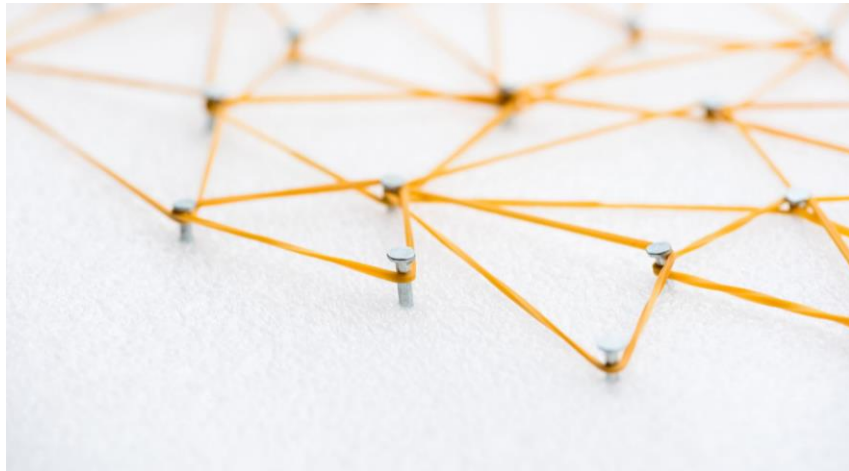
## NextLevel Live



A perspective view of a school hallway. On both sides are rows of orange lockers. The floor is light-colored tile. The ceiling has recessed lighting. At the end of the hallway is a whiteboard with the word 'INFORMATION' above it. There are clocks on the walls and a fire alarm pull station. The text 'Student Voices Symposium' is overlaid in the center.

# Student Voices Symposium





# NextLevel Live

## Building connections and belonging

- **Interaction and groupwork within sessions**
- **Informal connections**
- **Supporting and valuing different forms of engagement**

# NextLevel Live: What our students are saying

Students feel they do belong as a result of NextLevel Live sessions

I am ready for more Nextlevel live sessions.

I feel very included, the available information is so much and so relevant.



Excellent initiative that's supporting me to a great extent.

It's brilliant. Just continue. This helped me a lot.

... how to relate well with the other students, other organizations in the university, the lecturers and wellbeing and support resources.

Feedback

# Cultivating a sense of belonging in NextLevel

By cultivating a community within our offer, as a team we boost a sense of belonging in students.

Creating campus-wide initiatives and devoting more resources to student support.

# Best Practice for Collaboration and Creating a Sense of Belonging



- Communication
- Engagement
- Retention
- Success

# References

Jackson, A. 2022. What have we learnt about student belonging and Inclusion. Available online [What have we learnt about student belonging and inclusion? - HEPI](#) 02/12/23

Kenney, T. (2023) 'Increasing Belongingness Through a Strengths-Based Approach', *Diverse: Issues in Higher Education*, 40(8), p. 40. Available at: <https://search.ebscohost.com/login.aspx?direct=true&AuthType=sso&db=trh&AN=16475490&site=ehost-live&scope=site> (Accessed: 26 November 2023)

Pedler, M. 2021. A sense of belonging at university: student retention, motivation and enjoyment. Available online: <https://www.tandfonline.com/doi/full/10.1080/0309877X.2021.1955844> Accessed: 02/12/23

Producers, L. Travis, E. and Pownall, M. (2023) "It's hard to feel a part of something when you've never met people": defining "learning community" in an online era', *Higher Education (00181560)*, 85(6), pp. 1219–1234. doi:10.1007/s10734-022-00886-w

Tett, L., Cree, V. and Christie, H. (2017) 'From further to higher education: transition as an on-going process', *Higher Education (0181560)*, 73(3), pp. 389-406. Doi:10.1007/s10734-016-0101-1.34-016-0101-1.

Thomas, L. 2012. Building Student Engagement and Belonging in Higher Education at a Time of Change: final report from the What Works? Student Retention & Success programme. Available online: <https://www.phf.org.uk/wp-content/uploads/2014/10/What-Works-report-final.pdf> Accessed: 02/12/23

West, J. 2022. Belonging feels good, improves student retention rates and supports other EDI efforts. Joanna West offers six ways campuses can foster this intangible essential. Available online: [Sense of belonging: how campuses can foster it | THE Campus Learn, Share, Connect \(timeshighereducation.com\)](#) Accessed: 05/01/24