

Supplementary Table 1. Number of days with Diary and Dosimeter completion per participant

Participant	Baseline		Jun-18		Aug-18		Apr-19		Jun-19	
	Diary	Diary+UV	Diary	Diary+UV	Diary	Diary+UV	Diary	Diary+UV	Diary	Diary+UV
C1	0	0	0	0	0	0	0	0	0	0
C2*	21	15	19	19	21	21	21	21	21	21
C3*	21	19	21	21	21	21	20	20	21	21
C4*	21	21	21	15	21	21	21	19	21	21
C5*	21	21	21	19	21	20	21	21	21	21
C6*	21	21	20	20	20	20	20	20	19	19
C7*	21	21	21	21	20	20	21	21	21	21
C8*	21	21	21	21	20	20	21	21	21	21
I1	0	0	21	0	20	0				
I2	21	17	7	0	21	0				
I3*	21	0	21	21	21	19				
I4*	21	8	21	13	21	0				
I5*	14	20	21	0	21	21				
I6*	21	16	21	16	21	16				
I7*	20	21	21	21	21	21				
I8*	21	21	21	21	21	21				
Median	21	20	21	19	21	20	21	21	21	21
Percentage completed	85%	72%	89%	68%	93%	72%	86%	85%	86%	86%

* Indicates patient included in analysis of primary outcome

Supplementary Table 2. Treatment effects for the secondary outcomes, measured on a single occasion at each assessment, by analysis sample

Variable	Time	XPAND			Control			Adjusted mean difference			
		N	Mean	SD	N	Mean	SD	Diff	SE	p	SMD
Quality of life (EQ-5D-5L)	t0	8	0.8	0.09	8	0.9	0.14	0.004 ^a	0.04	0.920	0.03
	t1	8	0.9	0.11	6	0.9	0.11				
	t2	8	0.9	0.12	7	0.9	0.12				
Emotional wellbeing (SWEMWBS metric)	t0	8	25.0	3.50	8	24.9	3.76	-0.02 ^a	0.93	0.980	-0.01
	t1	8	23.7	3.47	6	23.1	1.66				
	t2	8	23.7	3.48	7	23.9	4.23				
Automaticity of photoprotection activities (SRBAI)	t0	8	4.8	2.34	8	4.0	2.22	-0.31 ^a	0.21	0.143	-0.14
	t1	8	5.4	1.67	6	5.0	1.58				
	t2	8	5.1	1.92	7	5.3	1.88				
Self-efficacy to photoprotect (PhotoSEQ)											
Self-efficacy to photoprotect using clothing (PhotoSEQ clothing subscale)	t0	8	6.7	1.62	8	6.6	1.88	-0.09 ^a	0.30	0.762	-0.05
	t1	8	7.5	1.80	6	6.7	2.27				
	t2	8	7.4	1.95	7	7.1	1.85				
Self-efficacy to photoprotect using sunscreen (PhotoSEQ sunscreen subscale)	t0	8	6.4	2.48	8	6.4	2.22	-0.46 ^a	0.20	0.019	-0.20
	t1	8	8.3	2.28	6	7.3	1.91				
	t2	8	7.8	2.53	7	7.8	1.61				
Photoprotection adherence (BPAQ)											
Photoprotection adherence (BPAQ): Item 1- When you went outside, how often did you protect your face against UVR using protective clothing?	t0	8	5.5	3.30	8	7.4	2.97	-0.38 ^a	0.71	0.596	-0.12
	t1	8	7.6	3.38	6	7.7	2.25				
	t2	8	7.3	3.77	7	6.7	3.77				
Photoprotection adherence (BPAQ): Item 2- How many days did you apply	t0	8	5.0	2.45	8	4.8	2.55	-0.38 ^a	0.36	0.302	-0.16
	t1	8	6.0	1.77	6	6.3	1.03				

sunscreen on your face when getting ready in the morning?	t2	8	5.6	2.45	7	6.3	0.95				
Photoprotection adherence (BPAQ):	t0	8	3.1	3.40	8	5.3	3.41				
Item 3- When you went outside for longer periods, how often did you reapply sunscreen on your face?	t1	8	6.8	3.73	6	5.2	4.12				
	t2	8	5.5	3.59	7	5.4	3.74	-1.25 ^a	0.54	0.021	-0.36
Photoprotection adherence (BPAQ):	t0	8	11.0	13.42	8	14.4	12.00				
Item 4- On average, how many hours did you spend outside per day between 11am and 3pm?	t1	8	16.1	14.25	7	17.8	13.38				
	t2	8	10.6	12.65	7	19.4	13.87	-7.13 ^a	4.32	0.099	-0.57
Photoprotection adherence (BPAQ):	t0	8	17.2	10.74	6	24.9	14.44				
Item 5- On average, how many hours did you spend outside per day between 7am and 7pm?	t1	7	19.1	9.90	7	26.4	13.56				
	t2	8	16.8	14.44	6	25.7	11.11	-8.46 ^a	4.62	0.067	-0.67

Note: ^a difference is adjusted mean difference between XPAND group and delayed intervention control across both periods

Table 3. Resource use and costs at T0 and T3: XPAND Intervention vs Delayed Intervention Control

T0 (Baseline) (n=16)							T3 (9 months after Baseline) (n=10)					
	XPAND Intervention (n=8)			Delayed intervention control (n=8)			XPAND intervention (n=5)			Delayed intervention control (n=5)		
	N (%) using	Mean Contacts ¹	Mean Costs (SD) ²	N (%) using	Mean Contacts	Mean Costs (SD)	N (%) using	Mean Contacts	Mean Costs (SD)	N (%) using	Mean Contacts	Mean Costs (SD)
Visit(s) to the XP clinic	3 (38)	1.67 (0.58)	4,825.63 (7,073.40)	6 (75)	1.5 (0.84)	8,686.13 (7,651.75)	2 (25)	1.0 (0.0)	1,930.25 (3,574.13)	5 (63)	1.2 (0.4)	5,790.75 (5,59.57)
Did you have to spend the night away from home in order to visit the clinic?												
Yes, I stayed in hospital	0 (0)	-	-	0 (0)	-	-	0 (0)	-	-	0 (0)	-	-
Yes, but not in hospital	0 (0)	-	-	4 (50)	-	-	0 (0)	-	-	2 (25)	-	-
No	8 (100)	-	-	4 (50)	-	-	8 (100)	-	-	6 (75)	-	-
Which specialists do you recall seeing on your visit(s) to the XP clinic?												
Dermatologist	3 (38)	1.7 (0.6)	-	6 (75)	1.5 (0.8)	-	2 (25)	1.0 (0.0)	-	5 (63)	1.2 (0.5)	-
Ophthalmologist	2 (25)	1.5 (0.7)	-	6 (75)	1.5 (0.8)	-	2 (25)	1.0 (0.0)	-	5 (63)	1.2 (0.5)	-
Neurologist	2 (25)	1.5 (0.7)	-	4 (50)	1.8 (1.0)	-	1 (13)	1.0 (-)	-	4 (50)	1.3 (0.5)	-
Geneticist	2 (25)	1.5 (0.7)	-	1 (13)	1.0 (-)	-	0 (0)	0 (0)	-	1 (13)	1.0 (-)	-
Psychologist	3 (38)	1.7 (0.6)	-	6 (75)	1.5 (0.8)	-	2 (25)	1.0 (-)	-	5 (63)	1.2 (0.5)	-
Specialist Nurse	3 (38)	1.7 (0.6)	-	3 (38)	2.0 (1.0)	-	2 (25)	1.0 (-)	-	4 (50)	1.3 (0.5)	-
Plastic Surgeon	2 (25)	2.0 (0.0)	-	1 (13)	2.0 (-)	-	0 (0)	0.0 (0.0)	-	2 (25)	1.5 (0.7)	-
Hospital Outpatient Appointments												
Dermatologist	1 (13)	1.0 (-)	13.91 (39.34)	4 (50)	1.67 (1.15)	69.54 (118.01)	0 (0)	0.0 (0.0)	0.0 (0.0)	4 (50)	2.0 (1.15)	111.26 (145.67)
Ophthalmologist	0 (0)	0.0 (0.0)	0.0 (0.0)	1 (13)	2.0 (-)	24.48 (69.25)	0 (0)	0.0 (0.0)	0.0 (0.0)	1 (13)	1.0 (-)	12.24 (34.63)
Neurologist	0 (0)	0.0 (0.0)	0.0 (0.0)	0 (0)	0.0 (0.0)	0.0 (0.0)	0 (0)	0.0 (0.0)	0.0 (0.0)	1 (13)	1.0 (-)	20.90 (59.12)
Geneticist	0 (0)	0.0 (0.0)	0.0 (0.0)	0 (0)	0.0 (0.0)	0.0 (0.0)	0 (0)	0.0 (0.0)	0.0 (0.0)	0 (0)	0.0 (0.0)	0.0 (0.0)
Psychologist	1 (13)	1.0 (-)	6.63 (18.74)	0 (0)	0.0 (0.0)	0.0 (0.0)	0 (0)	0.0 (0.0)	0.0 (0.0)	1 (13)	1.0 (-)	6.63 (18.74)
Plastic Surgeon	0 (0)	0.0 (0.0)	0.0 (0.0)	0 (0)	0.0 (0.0)	0.0 (0.0)	0 (0)	0.0 (0.0)	0.0 (0.0)	0 (0)	0.0 (0.0)	0.0 (0.0)
Accident & Emergency Surgery	0 (0)	0.0 (0.0)	0.0 (0.0)	0 (0)	0.0 (0.0)	0.0 (0.0)	1 (13)	1.0 (-)	15.0 (42.43)	0 (0)	0.0 (0.0)	0.0 (0.0)

Biopsy	2 (25)	1.0 (0.0)	167.5 (310.15)	3 (38)	2.67 (1.53)	670 (1,074.4)	1 (13)	1.0 (-)	83.75 (236.88)	3 (38)	3.33 (0.58)	837.50 (1,174.21)
Skin	3 (38)	1.0 (0.0)	251.25 (346.76)	2 (25)	3.5 (2.12)	586.25 (1,211.17)	2 (25)	1.0 (0)	167.5 (310.15)	3 (38)	2.67 (1.15)	670 (1,012.95)
Eyes	0 (0)	0.0 (0.0)	0.0 (0.0)	0 (0)	0.0 (0.0)	0.0 (0.0)	0 (0)	0.0 (0.0)	0.0 (0.0)	0 (0)	0.0 (0.0)	0.0 (0.0)
Other	1 (13)	1.0 (-)	163 (461.03)	3 (38)	1.67 (0.58)	815 (1,194.63)	1 (13)	1.0 (-)	163 (461.03)	1 (13)	2.0 (-)	326 (922.07)
Inpatient stays (Mean Days)	1 (13)	1.0 (-)	78.25 (221.32)	1 (13)	2.0 (-)	78.25 (221.32)	0 (0)	0.0 (0.0)	0.0 (0.0)	1 (13)	2.0 (-)	78.25 (221.32)
Community Contacts												
GP (Surgery/clinic)	0 (0)	0.0 (0.0)	0.0 (0.0)	0 (0)	0.0 (0.0)	0.0 (0.0)	0 (0)	0.0 (0.0)	0.0 (0.0)	0 (0)	0.0 (0.0)	0.0 (0.0)
GP (Home)	0 (0)	0.0 (0.0)	0.0 (0.0)	0 (0)	0.0 (0.0)	0.0 (0.0)	0 (0)	0.0 (0.0)	0.0 (0.0)	1 (13)	10.0 (-)	46.75 (132.23)
Nurse (Surgery/clinic)	4 (50)	12.0 (18.81)	540 (1,249.86)	2 (25)	1.5 (0.71)	33.75 (66.96)	2 (25)	4.5 (4.95)	101.25 (251.99)	1 (13)	7.0 (-)	78.75 (222.74)
Nurse (Home)	2 (25)	1.0 (0.0)	22.50 (41.66)	0 (0)	0.0 (0.0)	0.0 (0.0)	0 (0)	0.0 (0.0)	0.0 (0.0)	1 (13)	1.0 (-)	11.25 (31.82)
Physiotherapist (Surgery/clinic)	0 (0)	0.0 (0.0)	0.0 (0.0)	0 (0)	0.0 (0.0)	0.0 (0.0)	0 (0)	0.0 (0.0)	0.0 (0.0)	0 (0)	0.0 (0.0)	0.0 (0.0)
Physiotherapist (Home)	0 (0)	0.0 (0.0)	0.0 (0.0)	0 (0)	0.0 (0.0)	0.0 (0.0)	0 (0)	0.0 (0.0)	0.0 (0.0)	0 (0)	0.0 (0.0)	0.0 (0.0)
Psychologist/ Counsellor/ Psychotherapist (Surgery/clinic)	0 (0)	0.0 (0.0)	0.0 (0.0)	0 (0)	0.0 (0.0)	0.0 (0.0)	0 (0)	0.0 (0.0)	0.0 (0.0)	0 (0)	0.0 (0.0)	0.0 (0.0)
Psychologist/ Counsellor/ Psychotherapist (Home)	0 (0)	0.0 (0.0)	0.0 (0.0)	0 (0)	0.0 (0.0)	0.0 (0.0)	0 (0)	0.0 (0.0)	0.0 (0.0)	1 (13)	1.0 (-)	6.63 (18.74)
Alternative medicine/ complementary therapist (Surgery/clinic)	0 (0)	0.0 (0.0)	0.0 (0.0)	0 (0)	0.0 (0.0)	0.0 (0.0)	0 (0)	0.0 (0.0)	0.0 (0.0)	0 (0)	0.0 (0.0)	0.0 (0.0)
Alternative medicine/	0 (0)	0.0 (0.0)	0.0 (0.0)	0 (0)	0.0 (0.0)	0.0 (0.0)	0 (0)	0.0 (0.0)	0.0 (0.0)	0 (0)	0.0 (0.0)	0.0 (0.0)

complementary therapist (Home)												
OT (Surgery/clinic)	0 (0)	0.0 (0.0)	0.0 (0.0)	0 (0)	0.0 (0.0)	0.0 (0.0)	0 (0)	0.0 (0.0)	0.0 (0.0)	0 (0)	0.0 (0.0)	0.0 (0.0)
OT (Home)	0 (0)	0.0 (0.0)	0.0 (0.0)	0 (0)	0.0 (0.0)	0.0 (0.0)	0 (0)	0.0 (0.0)	0.0 (0.0)	0 (0)	0.0 (0.0)	0.0 (0.0)
Social Worker (Surgery/clinic)	0 (0)	0.0 (0.0)	0.0 (0.0)	0 (0)	0.0 (0.0)	0.0 (0.0)	0 (0)	0.0 (0.0)	0.0 (0.0)	0 (0)	0.0 (0.0)	0.0 (0.0)
Social Worker (Home)	0 (0)	0.0 (0.0)	0.0 (0.0)	0 (0)	0.0 (0.0)	0.0 (0.0)	0 (0)	0.0 (0.0)	0.0 (0.0)	0 (0)	0.0 (0.0)	0.0 (0.0)
Home Care Worker (Surgery/clinic)	0 (0)	0.0 (0.0)	0.0 (0.0)	0 (0)	0.0 (0.0)	0.0 (0.0)	0 (0)	0.0 (0.0)	0.0 (0.0)	0 (0)	0.0 (0.0)	0.0 (0.0)
Home Care Worker (Home)	0 (0)	0.0 (0.0)	0.0 (0.0)	0 (0)	0.0 (0.0)	0.0 (0.0)	0 (0)	0.0 (0.0)	0.0 (0.0)	0 (0)	0.0 (0.0)	0.0 (0.0)
Support group (Surgery/clinic) (assumed free)	0 (0)	0.0 (0.0)	0.0 (0.0)	0 (0)	0.0 (0.0)	0.0 (0.0)	0 (0)	0.0 (0.0)	0.0 (0.0)	0 (0)	0.0 (0.0)	0.0 (0.0)
Support group (Home) (assumed free)	0 (0)	0.0 (0.0)	0.0 (0.0)	0 (0)	0.0 (0.0)	0.0 (0.0)	0 (0)	0.0 (0.0)	0.0 (0.0)	0 (0)	0.0 (0.0)	0.0 (0.0)
Tests												
Magnetic Resonance Image brain scan	1 (13)	1.0 (-)	7.25 (20.51)	1 (13)	1.0 (-)	7.25 (20.51)	2 (25)	1.0 (0.0)	14.5 (26.85)	2 (25)	1.0 (0.0)	14.5 (26.85)
Audiometry	0 (0)	0.0 (0.0)	0.0 (0.0)	1 (13)	1.0 (-)	10.75 (30.41)	0 (0)	0.0 (0.0)	0.0 (0.0)	0 (0)	0.0 (0.0)	0.0 (0.0)
Nerve testing (nerve conduction or EMG test)	1 (13)	1.0 (-)	20.88 (59.04)	0 (0)	0.0 (0.0)	0.0 (0.0)	1 (13)	1.0 (-)	20.88 (59.04)	0 (0)	0.0 (0.0)	0.0 (0.0)
Blood test	1 (13)	2.0 (-)	0.75 (2.12)	3 (38)	1.0 (0.0)	1.13 (1.55)	2 (25)	3.0 (2.83)	2.25 (5.26)	3 (38)	1.0 (0.0)	1.13 (1.55)
Other investigations / tests	0 (0)	0.0 (0.0)	0.0 (0.0)	2 (25)	1.5 (0.71)	50.63 (100.44)	1 (13)	1.0 (-)	16.88 (47.73)	1 (13)	2.0 (-)	33.75 (95.46)
Help from friends or relatives (Informal Care)												
Child Care	0 (0)	0.0 (0.0)	-	0 (0)	0.0 (0.0)	-	0 (0)	0.0 (0.0)	-	1 (13)	missing	-

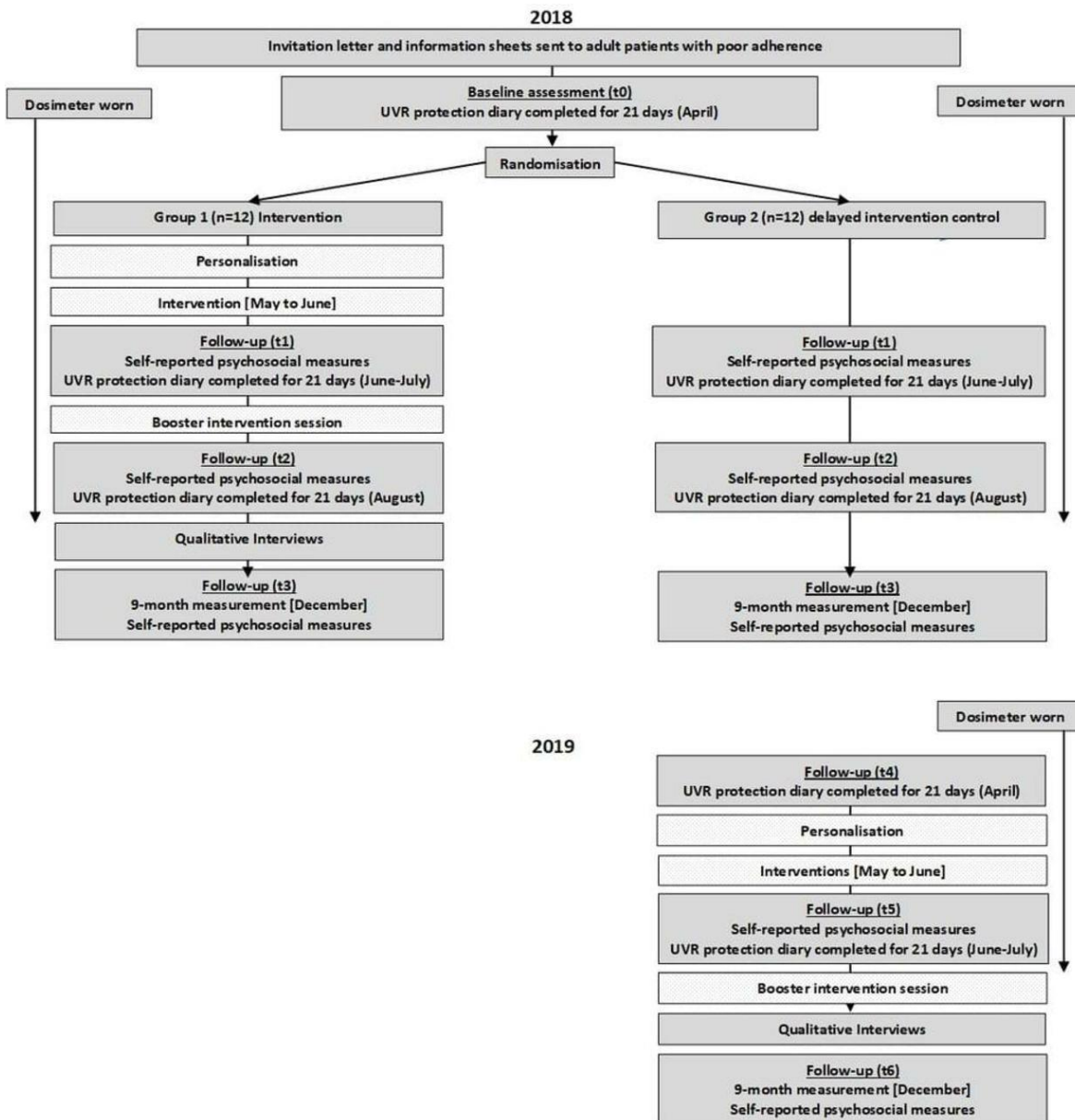
Personal care	1 (13)	missing	-	0 (0)	0.0 (0.0)	-	0 (0)	missing	-	0 (0)	0.0 (0.0)	-
Help in the house	1 (13)	missing	-	0 (0)	0.0 (0.0)	-	1 (13)	0.0 (0.0)	-	0.0 (0.0)	0.0 (0.0)	-
Help outside the house	1 (13)	missing	-	2 (25)	0.14 (0.38)	-	0.0 (0.0)	0.0 (0.0)	-	0.0 (0.0)	0.0 (0.0)	-
Going with you to medical appointment	2 (25)	missing	-	2 (25)	1.13 (2.80)	-	0.0 (0.0)	0.0 (0.0)	-	2 (25)	1.5 (0.71)	-
Employment & Education - Helper(s)	N (%) using	Days Off Work	Costs (SD)	N (%) using	Days Off Work	Costs (SD)	N (%) using	Days Off Work	Costs (SD)	N (%) using	Days Off Work	Costs (SD)
Days off work (helper)	2 (25)	2.0 (0.0)	56.9 (105.36)	0 (0)	0.0 (0.0)	0.0 (0.0)	0 (0)	0.0 (0.0)	0.0 (0.0)	0 (0)	0.0 (0.0)	0.0 (0.0)
Days taken off education (helper)	0 (0)	0.0 (0.0)	-	0 (0)	0.0 (0.0)	-	0 (0)	0.0 (0.0)	0.0 (0.0)	0 (0)	0.0 (0.0)	0.0 (0.0)
Employment Status												
Paid employment - full time	1 (13)	-	-	-	-	-	1 (13)	-	-	4 (50)	-	-
Paid employment - part-time	3 (38)	-	-	4 (50)	-	-	0 (0)	-	-	0 (0)	-	-
Student	1 (13)	-	-	1 (13)	-	-	0 (0)	-	-	0 (0)	-	-
Unpaid voluntary work	-	-	-	2 (25)	-	-	1 (13)	-	-	2 (25)	-	-
Unpaid voluntary work/ retired	1 (13)	-	-	-	-	-	1 (13)	-	-	0 (0)	-	-
Unemployed	0 (0)	-	-	0 (0)	-	-	0 (0)	-	-	1 (13)	-	-
Employment & Education	N (%) using	Days Off Work	Costs (SD)	N (%) using	Days Off Work	Costs (SD)	N (%) using	Days Off Work	Costs (SD)	N (%) using	Days Off Work	Costs (SD)
Days taken off education	1 (13)	2.0 (-)	-	0 (0)	0.0 (0.0)	-	0 (0)	0.0 (0.0)	-	0 (0)	0.0 (0.0)	-
Days off work	1 (13)	1.0 (-)	14.23 (40.23)	2 (25)	4.0 (1.41)	113.8 (219.32)	0 (0)	0.0 (0.0)	0.0 (0.0)	1 (13)	182.5 (-)	2,596.06 (7,342.77)
Impact of XP on Household Finances												
Large	0 (0)	-	-	1 (13)	-	-	0 (0)	-	-	1 (13)	-	-
Moderate	1 (13)	-	-	0 (0)	-	-	1 (13)	-	-	0 (0)	-	-
Small	1 (13)	-	-	3 (38)	-	-	1 (13)	-	-	2 (25)	-	-
Very Small	5 (63)	-	-	3 (38)	-	-	2 (25)	-	-	3 (38)	-	-

Additional Costs												
Sunscreen creams (6 months)	3 (38)	33.33 (15.28)	12.5 (19.09)	3 (38)	43.33 (5.77)	16.25 (22.64)	1 (13)	20.0 (-)	2.5 (7.07)	2 (25)	27.0 (18.38)	6.75 (14.30)
Sunscreen creams (one off cost)	0 (0)	0.0 (0.0)	0.0 (0.0)	4 (50)	10.75 (5.06)	5.38 (6.63)	1 (13)	15.0 (-)	1.88 (5.30)	4 (50)	25.24 (23.69)	12.62 (20.56)
UV protective window films (6 months)	1 (13)	200 (-)	25.0 (70.71)	0 (0)	0.0 (0.0)	0.0 (0.0)	0 (0)	0.0 (0.0)	0.0 (0.0)	0 (0)	0.0 (0.0)	0.0 (0.0)
UV protective window films (one off cost)	0 (0)	0.0 (0.0)	0.0 (0.0)	1 (13)	750 (-)	93.75 (265.17)	0 (0)	0.0 (0.0)	0.0 (0.0)	0 (0)	0.0 (0.0)	0.0 (0.0)
Other house/ car adaptations (6 months)	1 (13)	200 (-)	25.0 (70.71)	0 (0)	0.0 (0.0)	0.0 (0.0)	0 (0)	0.0 (0.0)	0.0 (0.0)	1 (13)	800.0 (-)	100 (282.84)
Other house/ car adaptations UV (one off cost)	0 (0)	0.0 (0.0)	0.0 (0.0)	0 (0)	0.0 (0.0)	0.0 (0.0)	0 (0)	0.0 (0.0)	0.0 (0.0)	0 (0)	0.0 (0.0)	0.0 (0.0)
UV visor (6 months)	0 (0)	0.0 (0.0)	0.0 (0.0)	0 (0)	0.0 (0.0)	0.0 (0.0)	0 (0)	0.0 (0.0)	0.0 (0.0)	0 (0)	0.0 (0.0)	0.0 (0.0)
UV visor (one off cost)	0 (0)	0.0 (0.0)	0.0 (0.0)	0 (0)	0.0 (0.0)	0.0 (0.0)	0 (0)	0.0 (0.0)	0.0 (0.0)	0 (0)	0.0 (0.0)	0.0 (0.0)
UV protective clothes (6 months)	3 (38)	93.33 (92.92)	35.0 (69.28)	1 (13)	70 (-)	8.75 (24.75)	2 (25)	6.0 (5.66)	1.5 (3.51)	0 (0)	0.0 (0.0)	0.0 (0.0)
UV protective clothes (one off cost)	0 (0)	0.0 (0.0)	0.0 (0.0)	2 (25)	32.5 (17.68)	8.13 (16.46)	0 (0)	0.0 (0.0)	0.0 (0.0)	0 (0)	0.0 (0.0)	0.0 (0.0)
Glasses (6 months)	1 (13)	15.0 (-)	1.88 (5.30)	1 (13)	10 (-)	1.25 (3.54)	1 (13)	100.0 (-)	12.5 (35.36)	2 (25)	78.0 (101.82)	19.5 (52.77)
Glasses (one off cost)	1 (13)	110 (-)	13.75 (38.89)	2 (25)	126.67 (87.37)	47.5 (80.49)	0 (0)	0.0 (0.0)	0.0 (0.0)	0 (0)	0.0 (0.0)	0.0 (0.0)
Vitamin D tablets	2 (25)	13.0 (4.24)	3.25 (6.23)	2 (25)	3.5 (2.12)	0.88 (1.81)	0 (0)	0.0 (0.0)	0.0 (0.0)	2 (25)	7.0 (7.07)	1.75 (4.20)
Vitamin D tablets (one off cost)	0 (0)	0.0 (0.0)	0.0 (0.0)	2 (25)	15.67 (4.04)	5.88 (8.39)	0 (0)	0.0 (0.0)	0.0 (0.0)	2 (25)	18.5 (4.95)	4.63 (8.77)


UV meter (6 months)	0 (0)	0.0 (0.0)	0.0 (0.0)	0 (0)	0.0 (0.0)	0.0 (0.0)	0 (0)	0.0 (0.0)	0.0 (0.0)	0 (0)	0.0 (0.0)	0.0 (0.0)
UV meter (one off cost)	0 (0)	0.0 (0.0)	0.0 (0.0)	0 (0)	0.0 (0.0)	0.0 (0.0)	0 (0)	0.0 (0.0)	0.0 (0.0)	0 (0)	0.0 (0.0)	0.0 (0.0)
Medication			26.24 (65.82)			14.29 (17.60)			0.0 (0.0)			40.78 (56.53)

1 Mean number of contacts/stays/days refers to the mean number for those who used the service. 2 Mean costs across the whole sample.

Supplementary Figure 1. Flow diagram of the trial design



Supplementary Figure 2. UVR Photoprotection Diary

Example:


- 1 Date (day of week)
- 2 Did you go outside today? (Please tick) YES NO If no, skip to question 4
- 3 Let us know when you were outside by marking a line on the diary

	6am	7am	8am	9am	10am	11am	12pm	1pm	2pm	3pm	4pm	5pm	6pm	7pm	8pm	9pm
I was outside																
- 4 Let us know if you wore any of these things today by marking a line on the diary

	6am	7am	8am	9am	10am	11am	12pm	1pm	2pm	3pm	4pm	5pm	6pm	7pm	8pm	9pm
Hat																
Glasses																
Scarf or facebuff																
Hoodie worn up																
Face visor																
- 5 If you put sunscreen on your face or used lip sun block tell us each time you did this by ticking the diary

	6am	7am	8am	9am	10am	11am	12pm	1pm	2pm	3pm	4pm	5pm	6pm	7pm	8pm	9pm
Sun screen																
Lip sunblock																

How would you describe your mood today?

0 1 2 3 4 5 6 7 8 9 10 10

Very negative Very positive

How important was UVR protection of your face today compared to other things you wanted/needed to do?

0 1 2 3 4 4 5 6 7 8 9 10

Not at all Very important

How much do you agree that UVR protection of your face today was something you did automatically without thinking?

0 1 2 3 4 5 6 7 7 8 9 10

Strongly disagree Strongly agree

How confident are you that you can protect your face well tomorrow, even if other things get in the way?

0 1 2 3 4 5 5 6 7 8 9 10

Not at all Very much so

7 DAYS
14 DAYS
21 DAYS

Supplementary Figure 3. Example of the dosimeter data for one of the participants during the Aug 2018 phase showing when the dosimeter was being worn and recording UV

