

Fig 1. Overlay of the DSC data observed for DLPC, DMPC, DPPC and DSPC heated from -50 to 240 °C at 10 °C min⁻¹ after removal of moisture from the samples.

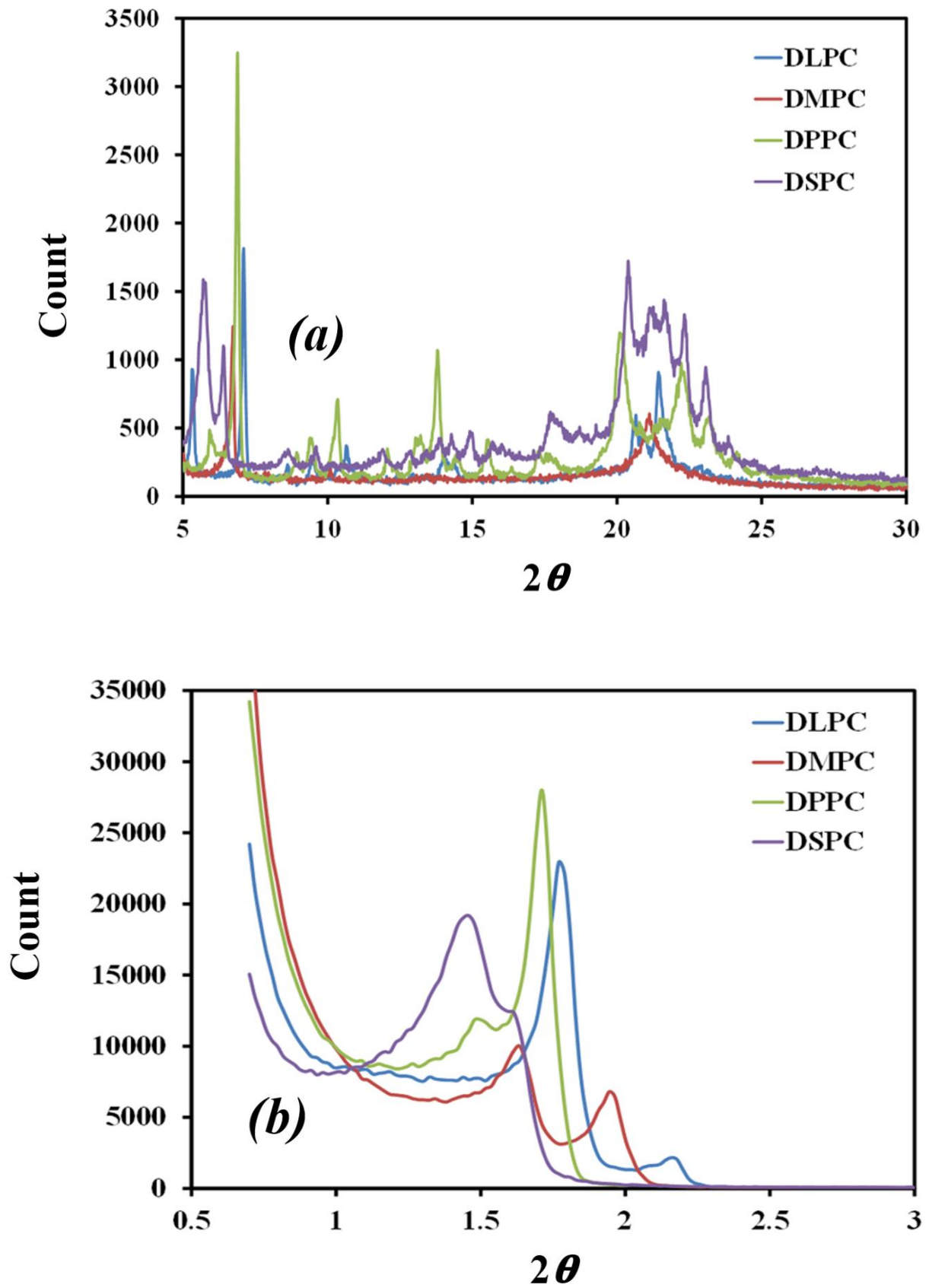
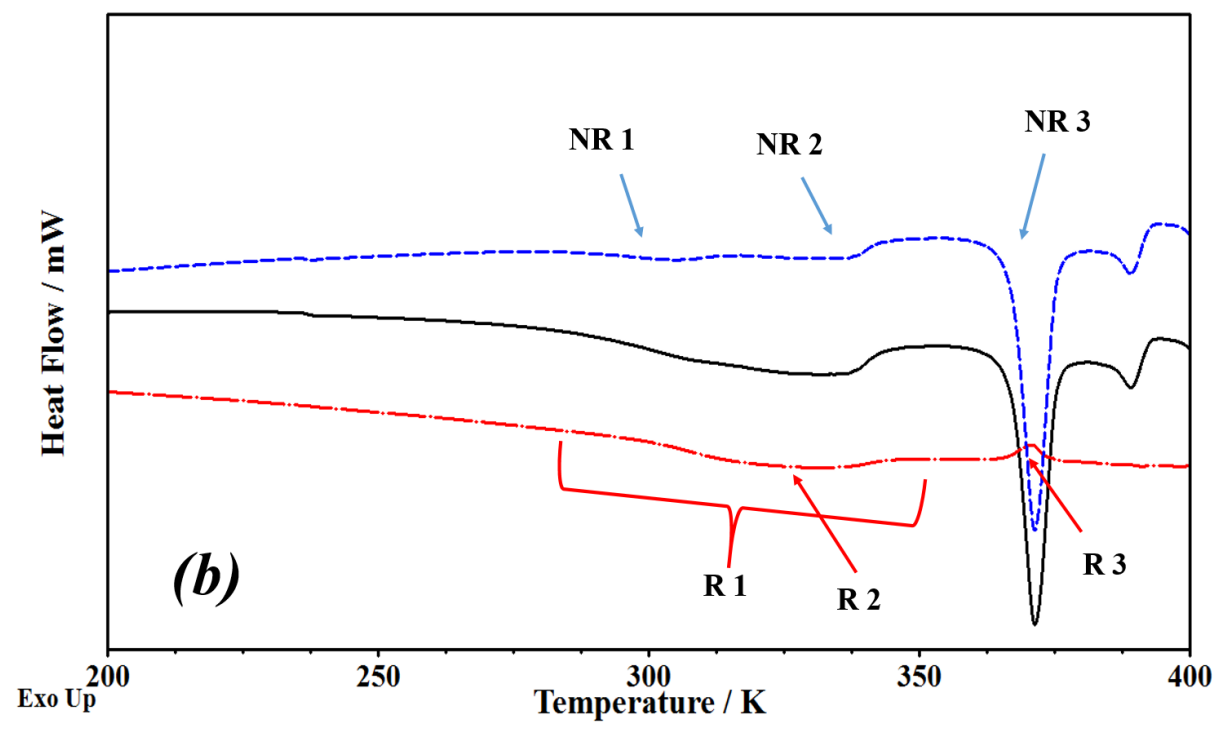
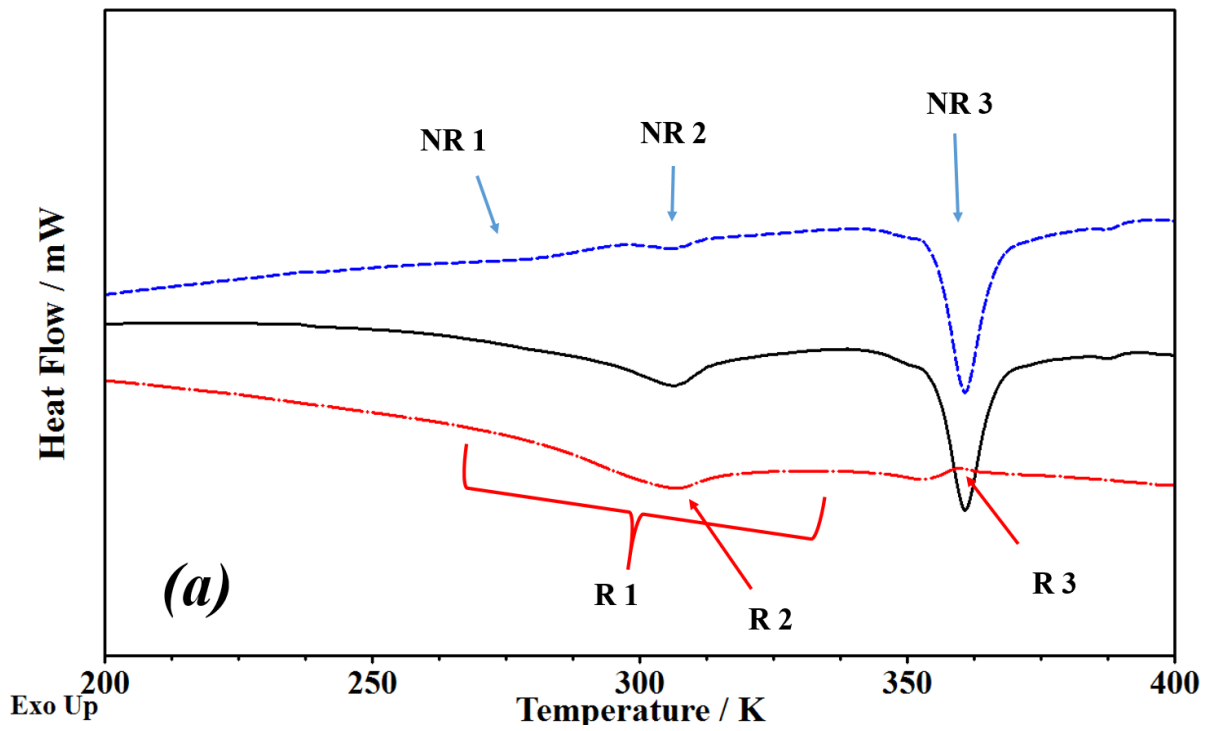


Fig. 2 XRPD results for the PCs after heating to 140 °C and cooling to ambient temperature (3 times) for each sample. (a) Higher angle diffractogram and (b) lower angle diffractogram.



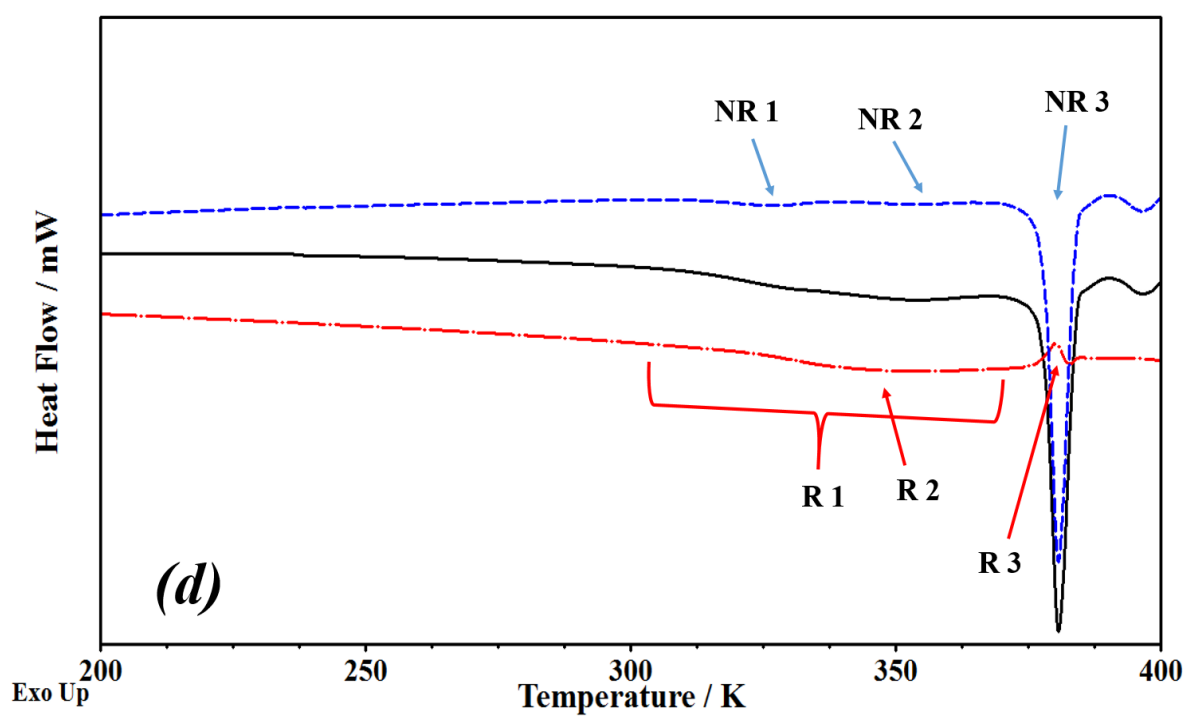
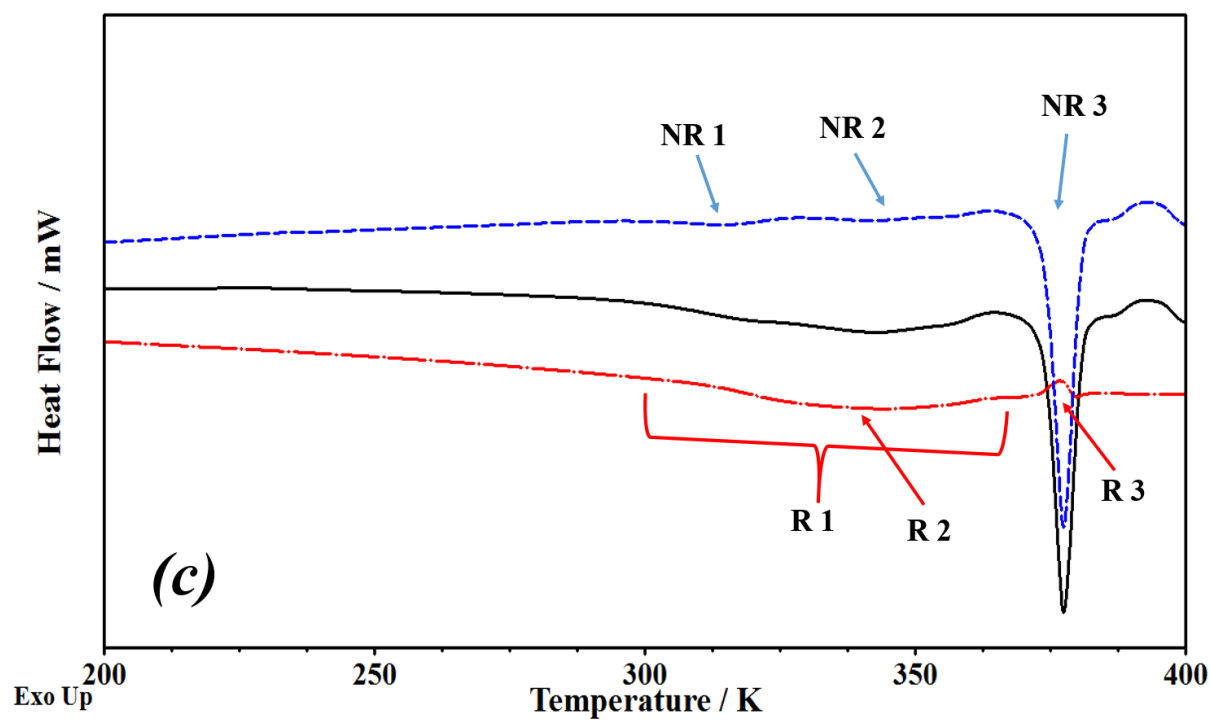


Fig. 3 Total, reversing and non-reversing TMDSC curves obtained for (a) DLPC, (b) DMPC, (c) DPPC and (d) DSPC. Data were obtained at an underlying heating rate of $2\text{ }^{\circ}\text{C min}^{-1}$ and temperature amplitude of $1.5\text{ }^{\circ}\text{C}$ every 60 s, using a sample size of $8.5 \pm 0.4\text{ mg}$.

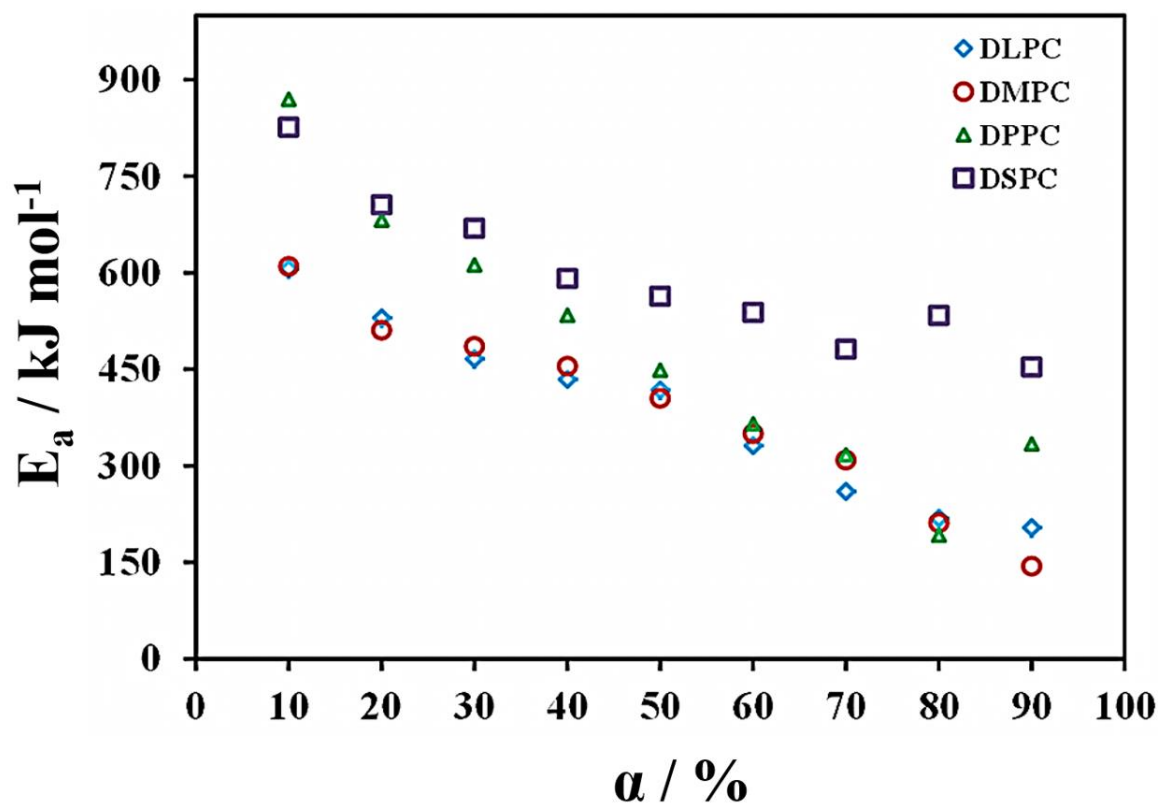


Fig. 4 Plots of activation energy (E_a) vs the degree of conversion (α) for the chain melting transition (T_m) of DLPC (\diamond), DMPC (\circ), DPPC (\triangle) and DSPC (\square).