



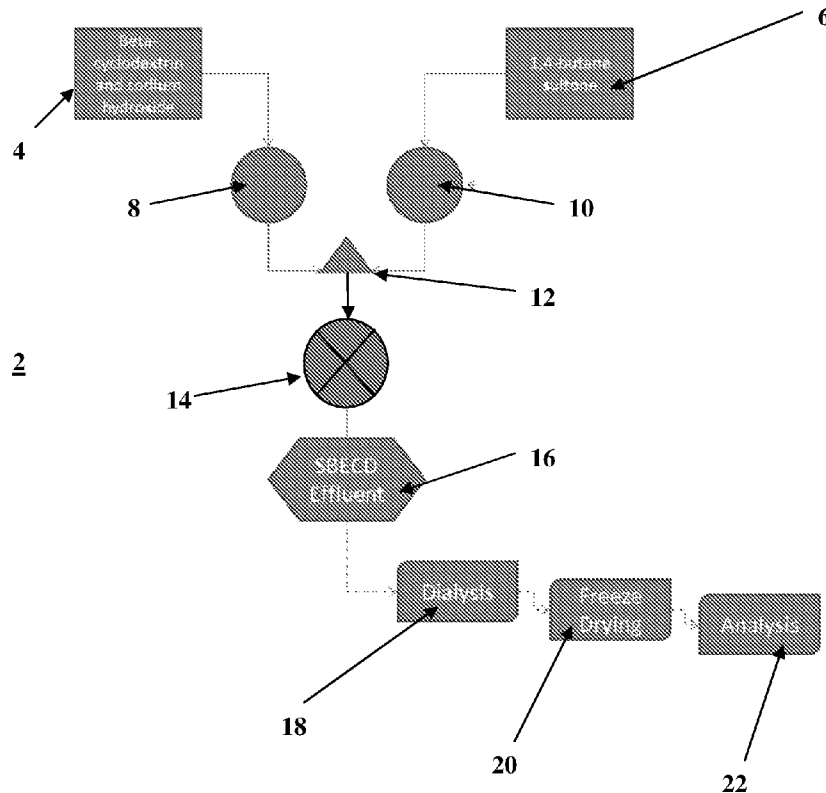
- (51) International Patent Classification:  
C08B 37/16 (2006.01) A61K 47/48 (2006.01)  
A61K 47/40 (2006.01)
- (21) International Application Number:  
PCT/GB2014/052173
- (22) International Filing Date:  
16 July 2014 (16.07.2014)
- (25) Filing Language: English
- (26) Publication Language: English
- (30) Priority Data:  
61/847,509 17 July 2013 (17.07.2013) US  
1312737.8 17 July 2013 (17.07.2013) GB
- (71) Applicants: CURADEV PHARMA PVT LTD [IN/IN];  
Plot No 87, Sector 83, Phase II, Noida 201305 (IN). THE  
UNIVERSITY OF GREENWICH [GB/GB]; Old Royal  
Naval College, Park Row, Greenwich, London SE10 9LS  
(GB).

- (72) Inventors: SAVAGE, Tammy; c/o The University of  
Greenwich, The Faculty of Engineering and Science, Med-  
way Campus, Central Avenue, Chatham Maritime, Kent  
ME4 4TB (GB). WICKS, Stephen; c/o The University of  
Greenwich, The Faculty of Engineering and Science, Med-  
way Campus, Central Avenue, Chatham Maritime, Kent  
ME4 4TB (GB). MITCHELL, John; c/o The University  
of Greenwich, The Faculty of Engineering and Science,  
Medway Campus, Central Avenue, Chatham Maritime,  
Kent ME4 4TB (GB).
- (74) Agents: HUTTER, Anton et al.; Venner Shipley LLP, 200  
Aldersgate, London EC1A 4HD (GB).
- (81) Designated States (unless otherwise indicated, for every  
kind of national protection available): AE, AG, AL, AM,  
AO, AT, AU, AZ, BA, BB, BG, BH, BN, BR, BW, BY,  
BZ, CA, CH, CL, CN, CO, CR, CU, CZ, DE, DK, DM,  
DO, DZ, EC, EE, EG, ES, FI, GB, GD, GE, GH, GM, GT,  
HN, HR, HU, ID, IL, IN, IR, IS, JP, KE, KG, KN, KP, KR,  
KZ, LA, LC, LK, LR, LS, LT, LU, LY, MA, MD, ME,  
MG, MK, MN, MW, MX, MY, MZ, NA, NG, NI, NO, NZ,

[Continued on next page]

(54) Title: CYCLODEXTRIN

Figure: 2



[Continued on next page]

WO 2015/008066 A1



OM, PA, PE, PG, PH, PL, PT, QA, RO, RS, RU, RW, SA, SC, SD, SE, SG, SK, SL, SM, ST, SV, SY, TH, TJ, TM, TN, TR, TT, TZ, UA, UG, US, UZ, VC, VN, ZA, ZM, ZW.

**(84) Designated States** (unless otherwise indicated, for every kind of regional protection available): ARIPO (BW, GH, GM, KE, LR, LS, MW, MZ, NA, RW, SD, SL, SZ, TZ, UG, ZM, ZW), Eurasian (AM, AZ, BY, KG, KZ, RU, TJ,

TM), European (AL, AT, BE, BG, CH, CY, CZ, DE, DK, EE, ES, FI, FR, GB, GR, HR, HU, IE, IS, IT, LT, LU, LV, MC, MK, MT, NL, NO, PL, PT, RO, RS, SE, SI, SK, SM, TR), OAPI (BF, BJ, CF, CG, CI, CM, GA, GN, GQ, GW, KM, ML, MR, NE, SN, TD, TG).

**Published:**

— with international search report (Art. 21(3))

**(57) Abstract:** The invention provides a method for preparing sulphoalkyl ether-  $\beta$ -cyclodextrin. The method comprises first contacting cyclodextrin with a base to form activated cyclodextrin. The method then comprises separately contacting the activated cyclodextrin with an alkyl sultone to form sulphoalkyl ether-  $\beta$ -cyclodextrin. The activation reaction is carried in batch and the sulphoalkylation reaction is carried out under continuous flow conditions.

## CYCLODEXTRIN

The invention relates to cyclodextrins and derivatised cyclodextrins, such as sulphoalkyl ether  $\beta$ -cyclodextrin, and in particular to a novel method for the synthesis thereof. The invention is particularly concerned with producing sulphobutyl ether  $\beta$ -cyclodextrin. The invention extends to novel compositions comprising sulphoalkyl ether  $\beta$ -cyclodextrins, and to the uses of such compositions, for example as excipients in order to improve the solubility and chemical stability of drugs in solution.

Sulphobutyl ether  $\beta$ -cyclodextrin (SBE- $\beta$ -CD or SBECD) is one of a class of polyanionic, hydrophilic water soluble cyclodextrin derivatives. The parent  $\beta$ -cyclodextrin can form an inclusion complex with certain active pharmaceutical ingredients (API) with two benefits, the apparent aqueous solubility of the API increases and, if labile functional groups are included, chemical stability is improved. However, the parent  $\beta$ -cyclodextrin suffers from two problems, including lower aqueous solubility and nephrotoxicity when given via injection, e.g. the intravenous route. Derivatisation of  $\beta$ -cyclodextrin (and its variants  $\alpha$  and  $\gamma$ -cyclodextrin) has been shown to be beneficial with respect to both of these two defects. The first derivatised cyclodextrin was the hydroxypropyl derivative, which was later followed by sulphobutyl ether. These two derivatised cyclodextrins are the most commercially significant.

20

Figure 1 illustrates the chemical reaction for the synthesis of SBE- $\beta$ -CD from the reagents  $\beta$ -cyclodextrin ( $\beta$ -CD) and 1, 4-butane sultone (BS). US 6,153,746 (Shah *et al*, 2000) describes a batch synthesis of SBE- $\beta$ -CD, the process being effectively divided into three main stages, i.e. initial reagent dissolution, a sulphoalkylation reaction and final reaction quenching. The reaction is then followed by downstream processing and purification, and ultimate isolation of the solid SBE- $\beta$ -CD material. However, a problem associated with using a batch synthetic method is that a high proportion of lower substituted SBE- $\beta$ -CD is observed. There is therefore a need to provide an improved synthetic method for producing substituted cyclodextrins, such as SBE- $\beta$ -CD.

30

SBE- $\beta$ -CD is currently used as an effective pharmaceutical excipient, and has been given the trade name Captisol (RTM). To date, there are five US FDA-approved, SBE- $\beta$ -CD-enabled drug products on the market: Nexterone (Baxter International); Geodon (Pfizer); Cerenia (Zoetis); Kyprolis (Onyx); Abilify (Bristol Myers Squibb).

35

In addition, as described in US 6,632,803B1 (Harding, 2003), Pfizer has developed the clinically important antifungal drug, voriconazole, formulated with SBE- $\beta$ -CD, as excipient. If Shah's and Harding's patents are considered together, the overall process to produce an injectable form of voriconazole follows a 10-step scheme, as shown in  
5 Figure 22. Production of the SBE- $\beta$ -CD excipient is represented by the six white boxes, and production of the final injectable voriconazole (i.e. formulation of the API with the excipient) is represented by the four grey boxes. The problems with this process are that it includes many steps, one of which is the transportation of the SBE- $\beta$ -CD from the fine chemical manufacturing plant to the customer who adds the active ingredient,  
10 e.g. voriconazole. Furthermore, freeze drying and spray drying are expensive and time-consuming processes. There is therefore a need to provide an improved process for the production of pharmaceuticals comprising substituted cyclodextrin-based excipients.

As described in the Examples, the inventors carefully studied the batch SBE- $\beta$ -CD  
15 production method that is described in US 5,376,645 (Stella *et al*, 1994), and experimented with the stoichiometry of the reaction, and have devised a significantly improved continuous flow synthetic method for producing sulphoalkyl ether cyclodextrins, such as SBE- $\beta$ -CD.

20 Hence, according to a first aspect of the invention, there is provided a method for preparing sulphoalkyl ether  $\beta$ -cyclodextrin, the method comprising contacting cyclodextrin with a base to form activated cyclodextrin, and separately contacting the activated cyclodextrin with an alkyl sultone to form sulphoalkyl ether  $\beta$ -cyclodextrin, characterised in that the sulphoalkylation reaction is carried out under continuous flow  
25 conditions.

In a second aspect, there is provided sulphoalkyl ether  $\beta$ -cyclodextrin obtained or obtainable by the method according to the first aspect.

30 The inventors have found that the continuous flow nature of the sulphoalkylation reaction in the method of the first aspect results in a surprisingly superior process compared to the prior art batch process, because it exhibits a greater reaction efficiency and results in a much tighter control of substitution of the resultant sulphoalkyl ether  $\beta$ -cyclodextrin, which is preferably sulphobutyl ether  $\beta$ -cyclodextrin (i.e. SBE- $\beta$ -CD).  
35 Indeed, the continuous flow synthesis process of the invention substantially less than 50% of the amount of base (which is preferably sodium hydroxide) that is used in the

prior art batch process, and only a 7:1 molar ratio of the alkyl sultone (which is preferably, 1, 4-butane sultone) to cyclodextrin instead of the 10:1 used by the prior art method. This finding was completely unexpected, since the inventors' expectation was that, at best, an equivalent synthetic efficiency between the batch and continuous flow methods would be seen. Accordingly, by using the continuous flow method of the first aspect, the alkyl sultone can react with the cyclodextrin more efficiently and completely to thereby generate higher degrees of substitution with more efficient use of the starting materials. It has also been noted that lower volumes of water are necessary to achieve chemical coupling.

5

In one embodiment of the method of the invention, the sulphoalkylation reaction is carried out under continuous flow conditions, whereas the activation reaction may be carried out either continuously, batch, or fed-batch. Preferably, however, the activation reaction is carried out as a batch process while the sulphoalkylation reaction is carried out under continuous flow conditions.

10

Problems associated with prior art methods which are fully batch, or fully continuous, (i.e. with respect to both the activation stage and the sulphoalkylation reaction stage) are that they result in the production of high concentrations of by-products (e.g. dimerisation products), produce SBE- $\beta$ -CD with low average degrees of substitution, as well leave unreacted alkyl sultone. Accordingly, the method of the invention, in which the activation stage is batch and the sulphoalkylation reaction stage is continuous, results in lower concentrations of by-products, SBE- $\beta$ -CD with a higher average degree of substitution, and also most if not all of the alkyl sultone is reacted.

15

Preferably, the cyclodextrin is  $\alpha$ -,  $\beta$ - or  $\gamma$ -cyclodextrin. It will be appreciated that  $\alpha$ - and  $\gamma$ -cyclodextrin can be used as pharmaceutical excipients for instance in commercially available drugs such as Prostavasin, Opalamon ( $\beta$ -CD) and Voltaren (modified  $\gamma$ -CD). Most preferably, however, the cyclodextrin is  $\beta$ -cyclodextrin.

20

The alkyl sultone may comprise propane sultone. Thus, sulphoalkyl ether  $\beta$ -cyclodextrin preferably comprises sulphopropyl ether  $\beta$ -cyclodextrin (SPE- $\beta$ -CD).

However, most preferably the alkyl sultone comprises 1, 4-butane sultone. Preferably, therefore, the sulphoalkyl ether  $\beta$ -cyclodextrin comprises sulphobutyl ether  $\beta$ -cyclodextrin (SBE- $\beta$ -CD).

25

30

The resultant substituted sulphaalkyl ether  $\beta$ -cyclodextrin according to the second aspect is novel *per se* because it exhibits a higher average degree of substitution, for a lower input of alkyl sultone and base than that which is produced using the known  
5 batch process. The batch method of preparing substituted sulphaalkyl ether  $\beta$ -cyclodextrin produces a higher concentration of lower degrees of sulphaalkyl ether  $\beta$ -cyclodextrin substitution than that produced using continuous flow. As shown in Figures 20 and 25, the continuous flow process of the invention however results in a lower concentration of lower substituted sulphaalkyl ether  $\beta$ -cyclodextrin (i.e. a degree  
10 of substitution value of 1-4) and surprisingly much higher concentrations of the higher substituted sulphaalkyl ether  $\beta$ - cyclodextrin (i.e. individual degrees of substitution values of 4-13).

Thus, preferably the average degree of substitution (ADS) of the sulphaalkyl ether  $\beta$ -cyclodextrin produced by the method of the first aspect or the SBE- $\beta$ -CD of the second  
15 aspect is greater than 7, more preferably 7.3 or more, more preferably 8 or more, even more preferably 9 or more, and most preferably 10 or more. The skilled person will appreciate that it is possible to calculate the substitution degree (i.e. the substitution envelope) by using the following Formula:

20

$$\text{ADS} = \sum ((\text{PAC}) \times (\text{MT}) / \text{SCA} \times 100) / 100$$

where PAC refers to the peak area count; MT refers to the migration time; and SCA refers to the summation of corrected area. The inventors believe that this increased  
25 ADS is an important feature of the invention.

Thus, in a third aspect there is provided a composition comprising sulphobutyl ether  $\beta$ -cyclodextrin (SBE- $\beta$ -CD), wherein the average degree of substitution (ADS) is 7 or more, preferably 7.3 or more, preferably 8 or more, even more preferably 9 or more,  
30 and most preferably 10 or more.

Since the batch method produces a higher proportion of lower substituted SBE- $\beta$ -CD than higher substituted SBE- $\beta$ -CD, the continuous flow method of the invention provides a significant advantage.

35

Preferably, the composition of the third aspect comprises SBE- $\beta$ -CD having a Substitution Molecular Mass Fraction (SMF) greater than 0.57, more preferably greater than 0.58, and even more preferably greater than 0.59. Preferably, the composition of the third aspect comprises SBE- $\beta$ -CD having an SMF greater than 0.60, and more  
5 preferably greater than 0.61. Example 8 describes how the SMF value can be calculated with reference to Figure 28.

The base may be an alkali metal hydroxide, for example sodium hydroxide, lithium hydroxide or potassium hydroxide. It is preferred that the base comprises sodium  
10 hydroxide.

The molar ratio of base (which is preferably sodium hydroxide) to cyclodextrin is preferably within the range of 2:1 to 22:1, preferably 6:1 to 20:1, more preferably 6:1 to 15:1, and even more preferably 6:1 to 14:1. The preferred molar ratio of base to  
15 cyclodextrin is 6:1 to 14:1. The most preferred molar ratio of base to cyclodextrin is 6:1 to 15:1.

During their research, the inventors carefully considered the prior art batch process, and found that the base, employed to chemically activate the  $\beta$ -cyclodextrin hydroxyl  
20 groups, has a tendency to attack the alkyl sultone reagent, thereby reducing its effective concentration, and, as a result, reduces the average degree of substitution in the final product with the generation of low degree of substitution species. Accordingly, during the method of the first aspect, it is preferred that the base is kept separate from the alkyl sultone, preferably 1, 4-butane sultone. Preferably, the base is first separately  
25 reacted with the cyclodextrin in order to produce the activated cyclodextrin. This reaction is preferably conducted in a first reservoir vessel. The activation reaction may therefore be carried out as a batch or fed-batch process. Preferably, the base and cyclodextrin form an aqueous solution. The activation reaction is preferably conducted at a temperature of about 50 to 95 °C, more preferably 60 to 70°C. The activation  
30 reaction is preferably conducted at atmospheric pressure.

Preferably, the alkyl sultone is contained within a second reservoir vessel. Preferably, the first and second vessels are not directly connected to each other, such that the sultone and the base do not react with each other.

The activated cyclodextrin (i.e. aqueous solution) and the alkyl sultone (i.e. pure) are preferably fed to a confluent 3-way junction where they are allowed to react to produce the substituted sulphoalkyl ether  $\beta$ -cyclodextrin. The activated aqueous cyclodextrin and the alkyl sultone are preferably pumped at a controlled rate to the junction.

5

The molar ratio of sultone (preferably 1, 4-butane sultone) to cyclodextrin (preferably  $\beta$ -cyclodextrin) is preferably between about 7:1 and 33:1. Preferably, the molar ratio of sultone to cyclodextrin is 7:1 to 17:1.

10 The sulphoalkylation reaction is preferably conducted at a temperature of 60 to 100°C, more preferably 65 to 95 °C, and even more preferably 60 to 70°C. The sulphoalkylation reaction is preferably conducted at atmospheric pressure.

15 The alkylation reaction may be carried out in a continuous stirred tank reactor (CSTR) or a flow reactor with efficient mixing and of suitable length to allow the reaction to complete within the reactor tubing. The activation of  $\beta$ -cyclodextrin is an important process parameter prior to reaction and this must continue irrespective of the reactor architecture.

20 In a preferred embodiment, the method of the invention comprises contacting the cyclodextrin in a batch or fed-batch reaction with the base to form activated cyclodextrin, and separately contacting the activated cyclodextrin with an alkyl sultone to form sulphoalkyl ether  $\beta$ -cyclodextrin, wherein the sulphoalkylation reaction is carried out under continuous flow conditions.

25

In a most preferred embodiment, therefore, the method comprises separately reacting  $\beta$ -cyclodextrin with sodium hydroxide in a batch or fed-batch reaction to form activated  $\beta$ -cyclodextrin, and then separately contacting the activated  $\beta$ -cyclodextrin with 1, 4-butane sultone to form SBE- $\beta$ -CD under continuous flow conditions.

30

The inventors have surprisingly demonstrated that it is possible to accurately control and manipulate the average degree of substitution (ADS) of sulphoalkyl ether  $\beta$ -cyclodextrin produced in sulphoalkylation reaction by varying the sodium hydroxide concentration in the initial activation reaction.

35



Preferably, therefore, the method comprises controlling the average degree of substitution (ADS) of sulphaalkyl ether  $\beta$ -cyclodextrin in the sulphaalkylation reaction by varying the base concentration in the initial activation reaction. This is an important feature of the invention.

5

Accordingly, in another aspect, there is provided use of sodium hydroxide concentration for controlling the average degree of substitution (ADS) of sulphaalkyl ether  $\beta$ -cyclodextrin produced in a sulphaalkylation reaction between activated cyclodextrin and an alkyl sultone.

10

Preferably, the use comprises carrying out an initial activation reaction between cyclodextrin and the base to form activated cyclodextrin.

15

To date, no one has appreciated that the concentration of sodium hydroxide can be varied in the initial activation reaction in order to control and manipulate the average degree of substitution (ADS) of resultant sulphaalkyl ether  $\beta$ -cyclodextrin.

20

The unsubstituted parent  $\beta$ -CD is shown to induce irreversible nephrotic damage to the kidney cells when used as an excipient in injection formulations. SBE- $\beta$ -CD causes reversible vacuolation of renal cells but not nephrotic damage and is therefore preferred for use in injectable formulations. Given that the inventors have clearly demonstrated that the method of the invention results in a lower concentration of low degree of substitution SBE- $\beta$ -CD species it is believed that the SBE- $\beta$ -CD may cause lower levels of physiological changes to renal cells. Accordingly, they believe that the SBE- $\beta$ -CD of the second aspect or the composition of the third aspect can be used to reduce changes in renal cells when used as a drug delivery system.

25

30

Hence, in a fourth aspect there is provided the use of sulphaalkyl ether  $\beta$ -cyclodextrin of the second aspect, or the composition of the third aspect, as a drug delivery system.

Preferably, the drug delivery system is an excipient, which preferably exhibits little or no side effects with regard to renal physiology. Preferably, the sulphaalkyl ether  $\beta$ -cyclodextrin comprises sulphobutyl ether  $\beta$ -cyclodextrin (SBE- $\beta$ -CD).

In a fifth aspect, therefore, there is provided a pharmaceutical excipient comprising the sulphoalkyl ether  $\beta$ -cyclodextrin of the second aspect, or the composition of the third aspect.

- 5 Preferably, therefore, the sulphoalkyl ether- $\beta$ -cyclodextrin comprises sulphobutyl ether  $\beta$ -cyclodextrin (SBE- $\beta$ -CD).

Advantageously, as described in examples, use of the continuous flow method of invention means that it is now possible to combine the two processes shown in Figure  
10 22 (i.e. excipient production, and pharmaceutical production), to result in the 6-step process chain shown in Figure 23.

Hence, in a sixth aspect, there is provided a method of preparing a pharmaceutical composition, the method comprising preparing the pharmaceutical excipient according  
15 to the fifth aspect, and contacting the excipient with an active pharmaceutical ingredient (API) to produce a pharmaceutical composition.

In contrast to the process shown in Figure 22, the production of the sulphobutyl ether cyclodextrin, acting as excipient, is now represented in Figure 23 by just three white  
20 boxes (instead of six), and formulation of the API with the excipient to create the pharmaceutical product is represented by only three grey boxes (instead of four). Accordingly, the method of the invention means that three of the steps shown in Figure 22 can be omitted. Therefore, it is now unnecessary to transport the sulphobutyl ether cyclodextrin from the fine chemical manufacturer to the customer. This would also  
25 include warehousing, etc. Secondly, the sulphoalkyl ether  $\beta$ -cyclodextrin can be manufactured on a just-in-time, just-enough basis. Thirdly, one of the two expensive and time-consuming freeze or spray drying process steps can be avoided.

Preferably, the method comprises contacting the excipient with an active  
30 pharmaceutical ingredient (API) to produce a pharmaceutical composition without drying or isolating the excipient.

Preferably, the pharmaceutical excipient comprises sulphobutyl ether  $\beta$ -cyclodextrin.

Preferably, the active pharmaceutical ingredient comprises voriconazole, ziprasidone, aripiprazole, maropitant, amiodarone, or carfilzomib, or their salts, solvates, polymorphs, pseudopolymorphs or co-crystals.

5 In another embodiment, the method of the invention comprises separately reacting  $\beta$ -cyclodextrin with sodium hydroxide to form activated  $\beta$ -cyclodextrin, and then separately contacting the activated  $\beta$ -cyclodextrin with 1, 4-butane sultone to form SBE- $\beta$ -CD, all under continuous flow conditions. Advantageously, the stoichiometry of the reaction can be readily controlled by varying  
10 the flow rates of the activated cyclodextrin solution and/or liquid sultone.

Hence, in another aspect of the invention, there is provided a method for preparing sulphoalkyl ether  $\beta$ -cyclodextrin, the method comprising contacting cyclodextrin with a base to form activated cyclodextrin, and separately contacting the activated  
15 cyclodextrin with an alkyl sultone to form sulphoalkyl ether  $\beta$ -cyclodextrin, characterised in that the process is carried out under continuous flow conditions.

All of the features described herein (including accompanying claims, abstract and drawings), and/or all of the steps of any method or process so disclosed, may be  
20 combined with any of the above aspects in any combination, except combinations where at least some of such features and/or steps are mutually exclusive.

For a better understanding of the invention, and to show how embodiments of the same may be carried into effect, reference will now be made, by way of example, to the  
25 accompanying drawings, in which:-

**Figure 1** shows the chemical reaction for the synthesis of sulphobutyl ether  $\beta$ -cyclodextrin (SBE- $\beta$ -CD) from  $\beta$ -cyclodextrin (CD) and 1, 4-butane sultone (BS);  
**Figure 2** is a schematic representation for an embodiment of an apparatus for carrying out continuous flow (CF) synthesis for SBE- $\beta$ -CD according to the invention;  
30 **Figure 3** shows the actual lab-based apparatus for carrying out a continuous flow synthesis for SBE- $\beta$ -CD;  
**Figure 4** is a graph showing the changing amount of NaOH at 7:1 and 10:1 BS/CD mole ratio; 100% nominal sodium hydroxide is equivalent to the base content used in US 5,376,645 (Stella *et al*,1994)  
35 **Figure 5** shows electropherograms of batch manufactured SBE- $\beta$ -CD (US 6,153,746-Shah *et al*, 2000) as the solid line and SBE- $\beta$ -CD manufactured by a continuous flow

process according to the invention, with a 8:1 butane sultone to  $\beta$ -cyclodextrin molar ratio as the dotted line. The sodium hydroxide to  $\beta$ -CD molar ratio is 11:1.

**Figure 6** shows electropherograms of batch manufactured SBE- $\beta$ -CD (US 6,153,746-Shah *et al*, 2000) as the solid line and SBE- $\beta$ -CD manufactured by a continuous flow  
5 process according to the invention, with a 11:1 butane sultone to  $\beta$ -cyclodextrin molar ratio as the dotted line. The sodium hydroxide to  $\beta$ -CD molar ratio is 11:1.

**Figure 7** shows electropherograms of batch manufactured SBE- $\beta$ -CD (US 6,153,746-Shah *et al*, 2000) as the solid line and SBE- $\beta$ -CD manufactured by a continuous flow  
10 process according to the invention, with a 14:1 butane sultone to  $\beta$ -cyclodextrin molar ratio as the dotted line. The sodium hydroxide to  $\beta$ -CD molar ratio is 11:1.

**Figure 8** shows electropherograms of batch manufactured SBE- $\beta$ -CD (US 6,153,746-Shah *et al*, 2000) as the solid line and SBE- $\beta$ -CD manufactured by a continuous flow  
process according to the invention, with a 17:1 butane sultone to  $\beta$ -cyclodextrin molar ratio as the dotted line. The sodium hydroxide to  $\beta$ -CD molar ratio is 11:1.

**Figure 9** shows electropherograms of batch manufactured SBE- $\beta$ -CD (US 6,153,746-Shah *et al*, 2000) as the solid line and SBE- $\beta$ -CD manufactured by a continuous flow  
15 process according to the invention, with a 19:1 butane sultone to  $\beta$ -cyclodextrin molar ratio as the dotted line. The sodium hydroxide to  $\beta$ -CD molar ratio is 11:1.

**Figure 10** shows electropherograms of batch manufactured SBE- $\beta$ -CD (US 6,153,746-Shah *et al*, 2000) as the solid line and SBE- $\beta$ -CD manufactured by a continuous flow  
20 process according to the invention, with a 23:1 butane sultone to  $\beta$ -cyclodextrin molar ratio as the dotted line. The sodium hydroxide to  $\beta$ -CD molar ratio is 11:1.

**Figure 11** shows electropherograms of batch manufactured SBE- $\beta$ -CD (US 6,153,746-Shah *et al*, 2000) as the solid line and SBE- $\beta$ -CD manufactured by a continuous flow  
25 process according to the invention, with a 28:1 butane sultone to  $\beta$ -cyclodextrin molar ratio as the dotted line. The sodium hydroxide to  $\beta$ -CD molar ratio is 11:1.

**Figure 12** shows electropherograms of batch manufactured SBE- $\beta$ -CD (US 6,153,746-Shah *et al*, 2000) as the solid line and SBE- $\beta$ -CD manufactured by a continuous flow  
30 process according to the invention, with a 33:1 butane sultone to  $\beta$ -cyclodextrin molar ratio as the dotted line. The sodium hydroxide to  $\beta$ -CD molar ratio is 11:1.

**Figure 13** shows electropherograms of batch manufactured SBE- $\beta$ -CD (US 6,153,746-Shah *et al*, 2000) as the solid line and SBE- $\beta$ -CD manufactured by a continuous flow  
process according to the invention, with a 7:1 butane sultone to  $\beta$ -cyclodextrin molar ratio as the dotted line. The sodium hydroxide to  $\beta$ -CD molar ratio is 6:1.

**Figure 14** shows electropherograms of batch manufactured SBE- $\beta$ -CD (US 6,153,746-Shah *et al*, 2000) as the solid line and SBE- $\beta$ -CD manufactured by a continuous flow  
35

process according to the invention, with a 7:1 butane sultone to  $\beta$ -cyclodextrin molar ratio as the dotted line. The sodium hydroxide to  $\beta$ -CD molar ratio is 9:1.

**Figure 15** shows electropherograms of batch manufactured SBE- $\beta$ -CD (US 6,153,746-Shah *et al*, 2000) as the solid line and SBE- $\beta$ -CD manufactured by a continuous flow  
5 process according to the invention, with a 7:1 butane sultone to  $\beta$ -cyclodextrin molar ratio as the dotted line. The sodium hydroxide to  $\beta$ -CD molar ratio is 11:1.

**Figure 16** shows electropherograms of batch manufactured SBE- $\beta$ -CD (US 6,153,746-Shah *et al*, 2000) as the solid line and SBE- $\beta$ -CD manufactured by a continuous flow  
10 process according to the invention, with a 7:1 butane sultone to  $\beta$ -cyclodextrin molar ratio as the dotted line. The sodium hydroxide to  $\beta$ -CD molar ratio is 14:1.

**Figure 17** shows electropherograms of batch manufactured SBE- $\beta$ -CD (US 6,153,746-Shah *et al*, 2000) as the solid line and SBE- $\beta$ -CD manufactured by a continuous flow  
process according to the invention, with a 10:1 butane sultone to  $\beta$ -cyclodextrin molar ratio as the dotted line. The sodium hydroxide to  $\beta$ -CD molar ratio is 6:1.

**Figure 18** shows electropherograms of batch manufactured SBE- $\beta$ -CD (US 6,153,746-Shah *et al*, 2000) as the solid line and SBE- $\beta$ -CD manufactured by a continuous flow  
15 process according to the invention, with a 10:1 butane sultone to  $\beta$ -cyclodextrin molar ratio as the dotted line. The sodium hydroxide to  $\beta$ -CD molar ratio is 9:1.

**Figure 19** shows electropherograms of batch manufactured SBE- $\beta$ -CD (US 6,153,746-Shah *et al*, 2000) as the solid line and SBE- $\beta$ -CD manufactured by a continuous flow  
20 process according to the invention, with a 10:1 butane sultone to  $\beta$ -cyclodextrin molar ratio as the dotted line. The sodium hydroxide to  $\beta$ -CD molar ratio is 11:1.

**Figure 20** shows electropherograms of batch manufactured SBE- $\beta$ -CD (US 6,153,746-Shah, *et al* 2000) as the solid line and SBE- $\beta$ -CD manufactured by a continuous flow  
25 process according to the invention, with a 10:1 butane sultone to  $\beta$ -cyclodextrin molar ratio as the dotted line. The sodium hydroxide to  $\beta$ -CD molar ratio is 14:1.

**Figure 21** shows a Vapourtec integrated flow reactor and associated equipment that will ultimately be preferred for the integrated manufacture of the SBE- $\beta$ -CD and API in a secondary pharmaceutical production manufacturing area to produce the drug  
30 product.

**Figure 22** is a schematic representation of a conventional process chain for voriconazole Injection Based on the standard SBECD batch process and Fine Chemical Model (excipient production in white; secondary pharmaceutical production in grey).

**Figure 23** is a schematic representation of a revised process chain for voriconazole  
35 Injection Based on an SBECD continuous flow (CF) process and Integrated

Manufacture Model (excipient production in white; secondary pharmaceutical production in grey).

**Figure 24** is a chromatogram of sulphobutylether  $\beta$ -cyclodextrin produced by the method described in US 6,153,746 (Shah, 2000), and tested according to the methods described in United States Pharmacopoeia 35/National Formulary 30 (USP35/NF30). HPLC conditions are based on a gradient separation with a CD-Screen-DAP column and ELSD detection.

**Figure 25** is a chromatogram of sulphobutylether  $\beta$ -cyclodextrin produced by the method according to the invention. Reaction conditions correspond to those used to generate Figure 20, and HPLC conditions are based on a gradient separation with a CD-Screen-DAP column and ELSD detection.

**Figure 26** is a table showing shows a summary of the data adding the Average Degree of Substitution data and dispersion data.

**Figure 27** is a table describing an attempt to produce material compliant with the USP35/NF30 monograph with the use of more moderate reaction conditions.

**Figure 28** is a graph showing substitution molecular mass ratio for SBE- $\beta$ -CD.

**Figure 29** is a graph showing the molecular weight and individual degree of substitution for SBE- $\beta$ -CD.

## **Example**

The inventors have developed a novel continuous flow (CF) method for the synthesis of sulphoalkyl ether- $\beta$ -cyclodextrin, for example sulphobutyl ether  $\beta$ -cyclodextrin (SBE- $\beta$ -CD). The invention includes novel compositions comprising sulphoalkyl ether  $\beta$ -cyclodextrins, and to therapeutic uses of such compositions, for example to improve the solubility and chemical stability of drugs in solution.

### Materials

Beta cyclodextrin ( $\beta$ -CD), 1, 4-Butane Sultone (BS), Water for injections and sodium hydroxide (NaOH).

### Laboratory Equipment

Continuous stirred tank reactor (CSTR) vessel, Masterflex pump, Hotplate stirrer, Water bath, PTFE tubing (2mm ID/4mm ID), Omnifit Connectors, Dialysis tubing (Biotech grade, Cellulose Ester, 0.5-1 kDa MWCO).

### Methods

The set-up for the continuous flow experiments consisted of two Masterflex pumps (8, 10) connected to a double 10ml (i.e. two 10ml chambers) jacketed continuous stirred tank reactor (CSTR) or holding chamber (14) used as a holding chamber/sight glass.

5 The two pumps (8, 10) were connected to the CSTR/holding chamber (14) via a three-way connector (12) and PTFE tubing. Non-return valves were fitted in line in the vicinity of the three-way connector (12) to prevent the reagent stream reverse flow as a result of differential flow pressure in either of the feed lines. In one embodiment, the PTFE tubing was put in a water bath to maintain temperature at approximately 50-

10 60°C. In another embodiment, the PTFE tubing was put in a water bath to maintain temperature at approximately 60-100°C.

In a round bottom flask, a stock solution of  $\beta$ -CD in NaOH solution (4) was first prepared as follows: 15g of  $\beta$ -CD ( $1.32 \times 10^{-2}$  mole) was added with stirring to an aqueous solution composed of 6g of NaOH in 30ml water. This solution was

15 maintained between 60-70°C with a hotplate stirrer.

At the given drive speeds, pump (8) was used to deliver stock  $\beta$ -CD solution into the CSTR (14) via a three way connector (12) where the reaction initially takes place, while

20 pump (10) was used to also deliver neat butane sultone (6), at ambient temperature, through the connector (12) into the CSTR (14). However, in some embodiments, the neat sultone (6) can be heated to 60-90 °C. The CSTR (14) contained two 10ml chambers and was provided to increase the residence time for the reaction to continue, having started in the connector (12). In one embodiment, pump (8) was first turned on

25 to feed the  $\beta$ -CD until it reached the first chamber of the CSTR (14), after which pump (10) was then turned on to feed the butane sultone into the CSTR (14). However, in another embodiment, pumps (8, 10) are both activated at the same time in order to avoid pumping pure  $\beta$ -CD through the system to produce higher than desirable unreacted precursor that would ultimately need to be removed by downstream

30 processing. An internal vortex circulation was generated within the continuous flowing reaction stream within the CSTR (14), which ensured rapid mixing. Efficient stirring appears to be very important to the success of the process. The reaction solution was delivered via pumps (8, 10) into the CSTR (14) in a continuous manner.

35 The PTFE tubing is about 30cm in length and is not sufficient for the reaction to complete prior to entry into the CSTR (14). As two phases are seen in the first chamber

of the CSTR (14), it is most likely that small volumes of the heated reagents are delivered and react there. Provided that the flow rate is not excessively high, the second chamber of the CSTR (14) and the receiving vessel both contain clear liquid suggesting that the reaction is complete upon exit from the first chamber of the CSTR (14). High flow rates will deliver unreacted material to the second chamber and, in extreme circumstances, to the receiving vessel. The crude product was harvested in a 20ml sample bottle.

Continuous flow experiments were carried out at different drive speed combinations for pump (8) and (10) thus obtaining a series of BS:CD mole ratio, as shown in Tables 1 and 2.

Table 1 – The relationship between pump drive speed and flow rate giving rise to different butane sultone- $\beta$ -cyclodextrin molar ratios – constant  $\beta$ -cyclodextrin flow rate.

	Butane sultone								$\beta$ - CD
Drive speed(rpm)	3	4	5	6	7	8	10	12	8
Flow rate(ml/min)	0.27	0.36	0.45	0.54	0.63	0.72	0.90	1.08	0.72
Concentration Mol/min	2.65e <sup>-3</sup>	3.53e <sup>-3</sup>	4.41e <sup>-3</sup>	5.29e <sup>-3</sup>	6.17e <sup>-3</sup>	7.04e <sup>-3</sup>	8.82e <sup>-3</sup>	1.06e <sup>-2</sup>	3.17e <sup>-3</sup>
Molar ratio [BS: $\beta$ -CD]	8:1	11:1	14:1	17:1	19:1	23:1	28:1	33:1	—

Table 2 –The relationship between pump drive speed and flow rate giving rise to different butane sultone- $\beta$ -cyclodextrin molar ratios – constant butane sultone flow rate.

	$\beta$ -CD		BS
Drive speed(rpm)	11	15	5
Flow rate(ml/min)	0.99	1.35	0.45
Concentration	4.36	5.94	4.4 x 10 <sup>-3</sup>



Mol.min x10 <sup>-4</sup>			
[BS: $\beta$ -CD] Mole ratio	10:1	7:1	—

5

In addition, the effect of changing the amount of NaOH at a given drive speed/BS: $\beta$ -CD mole ratio was also carried out, thus obtaining a series of NaOH: CD mole ratios, as shown in Figure 4. The crude reaction products were dialysed and lyophilized to obtain the sulphobutyl ether of  $\beta$ -CD as a white solid intermediate for chemical analysis. The product was analysed using capillary electrophoresis, mass spectrometry and HPLC to show the degree of substitution, HPLC was carried out to show unreacted  $\beta$ -CD and levels of BS residues were analysed by gas chromatography. The lyophilised product was weighed to give the yield.

#### 15 Example 1

Referring to Figures 2 and 3, there are shown embodiments of the apparatus 2 for the continuous flow synthesis of SBE- $\beta$ -CD. Two reservoirs (4), (6) are primed, the first reservoir (4) containing “activated”  $\beta$ -cyclodextrin and sodium hydroxide in an aqueous solution, and the second reservoir (6) containing pure 1,4-butane sultone. A first peristaltic pump (8) was turned on to feed the  $\beta$ -cyclodextrin and sodium hydroxide in aqueous solution through a three-way junction (12) with non-return valves. A second peristaltic pump (10) was turned on to feed the 1, 4-butane sultone also through the junction (12) where it reacted with the  $\beta$ -cyclodextrin. The stoichiometry of the reaction could be controlled by mixing the two reaction streams at differential rates, and the ratio of  $\beta$ -cyclodextrin to sodium hydroxide could be adjusted in the reservoir (4) prior to mixing with 1, 4-butane sultone. The amount of SBE- $\beta$ -CD produced in the process is therefore a function of pumping time, and not equipment scale. The residence time of the reaction between the  $\beta$ -cyclodextrin/NaOH solution and 1, 4-butane sultone was increased by passing the mixture from the outlet of the three-way junction (12) to a holding chamber/sight glass or continuous stirred tank reactor (CSTR) (14) where further reaction took place. The CSTR (14) could be replaced in whole or in part with a temperature controlled coiled tubing of sufficient length. This would provide appropriate level of turbulence and residence time for the coupling reaction to complete efficiently.

35

The inventors' primary focus was to study the complexity of the sulphoalkylation reaction in the flow synthesis mode. It was therefore necessary to dialyse (18) the reaction effluent (16), freeze dry it (20) and then analyse it (22). Under commercial conditions, the SBE- $\beta$ -CD effluent (16) leaving the CSTR (14) would be connected to the downstream processing elements, e.g. continuous dialysis, flow-through  
5 depyrogenation columns and membrane pre-filters (pore size 0.22 $\mu$ m or greater) prior to dynamic active pharmaceutical ingredient addition processes described in Figure 23. The SBE- $\beta$ -CD produced has been analysed by mass spectrometry, capillary electrophoresis for comparison with the patent literature. The other processing simply  
10 becomes an engineering problem as it involves mixing or purification of aqueous SBE- $\beta$ -CD or SBE- $\beta$ -CD-drug complex solutions.

### Results

Referring to Figures 5-20, there are shown electropherograms for the standard batch  
15 (standard) and continuous flow (CF) synthesis of SBE- $\beta$ -CD at the different BS:  $\beta$ -CD molar ratios resulting from differential pump speeds at a constant  $\beta$ -CD: sodium hydroxide mass ratio, or at different  $\beta$ -CD: sodium hydroxide mass ratios for two different BS:  $\beta$ -CD molar ratios as indicated. The standard curve (solid line) corresponds to the known batch manufacture method of SBE- $\beta$ -CD, as described in US  
20 6,153,746 (Shah *et al*, 2000). The dotted trace in each graph however is for an SBE- $\beta$ -CD sample produced by a continuous flow (CF) synthesis process according to the invention.

Referring to Figure 5, there is shown the electropherograms for SBE- $\beta$ -CD produced  
25 using the known batch method compared to continuous flow (CF) with a 1, 4-Butane Sultone (BS): Beta cyclodextrin ( $\beta$ -CD) drive speed of 3:8 and with a given BS: CD mole ratio as shown in Table 1. As can be seen, there are 10 peaks for the CF method and only 9 peaks for the Batch method. The number of peaks is indicative of the degree of substitution for the derivatives.

30 Referring to Figure 6, there is shown the electropherograms for standard sample of Batch produced SBE- $\beta$ -CD and SBE- $\beta$ -CD produced by continuous flow synthesis at a 4:8 BS/CD drive speed and therefore a given BS: CD mole ratio as shown in Table 1. As can be seen, there are 10 peaks for the CF method and only 9 peaks for the Batch  
35 method. The number of peaks is indicative of the degree of substitution for the derivatives.

Referring to Figure 7, there is shown the electropherograms for standard sample of Batch produced SBE- $\beta$ -CD and SBE- $\beta$ -CD produced by continuous flow synthesis at a 5:8 BS/CD drive speed, at a given BS: CD mole ratio as shown in Table 1. The two electropherograms show coincidence which indicates equivalence of substitution envelope. Both plots show about 9 distinguishable peaks which correspond to the degree of substitution.

Referring to Figure 8, there is shown the electropherograms for standard sample of Batch produced SBE- $\beta$ -CD and SBE- $\beta$ -CD produced by continuous flow synthesis at a 6:8 BS/CD drive speed at a given BS: CD mole ratio as shown in Table 1. The two electropherograms show coincidence which indicates equivalence of substitution envelope. Both plots show about 9 distinguishable peaks which correspond to the degree of substitution.

Referring to Figure 9, there is shown the electropherograms for standard sample of Batch produced SBE- $\beta$ -CD and SBE- $\beta$ -CD produced by continuous flow synthesis at a 7:8 BS/CD drive speed and at given BS: CD mole ratio as shown in Table 1. The electropherogram for the continuous flow shows an intense peak between 4 and 5 minutes, this peak possibly indicating the presence of a reaction impurity. The BS:  $\beta$ -CD mole ratio indicates an excess of BS.

Referring to Figure 10, there is shown the electropherograms for standard sample of Batch produced SBE- $\beta$ -CD and SBE- $\beta$ -CD produced by continuous flow synthesis at a 8:8 BS/ $\beta$ -CD drive speed at given BS: CD mole ratio as shown in Table 1. As can be seen, there are 10 peaks for the CF method and only 9 peaks for the Batch method. The number of peaks is indicative of the degree of substitution for the derivatives.

Referring to Figure 11, there is shown the electropherograms for standard sample of Batch produced SBE- $\beta$ -CD and SBE- $\beta$ -CD produced by continuous flow synthesis at a 10:8 BS/CD drive speed at given BS: CD mole ratio as shown in Table 1. The electropherogram for the continuous flow shows an intense peak between 4 and 5 minutes, again this peak possibly indicating the presence of a reaction impurity. The BS:  $\beta$ -CD mole ratio indicates an excess of BS.

35

Referring to Figure 12, there is shown the electropherograms for standard sample of Batch produced SBE- $\beta$ -CD and SBE- $\beta$ -CD produced by continuous flow synthesis at a 12:8 BS/CD drive speed at given BS: CD mole ratio as shown in Table 1. The electropherogram for the continuous flow also shows an intense peak between 4 and 5 minutes, this peak possibly indicating the presence of a reaction impurity. The BS:  $\beta$ -CD mole ratio indicates an excess of BS.

Referring to Figure 13, there is shown the electropherograms batch manufactured SBE- $\beta$ -CD as the solid line and SBE- $\beta$ -CD manufactured by the continuous flow process with a 7:1 butane sultone to  $\beta$ -cyclodextrin molar ratio as the dotted line. The sodium hydroxide to  $\beta$ -CD molar ratio is 6:1. As can be seen, coincidence of the two electropherograms indicates an equivalent 'Substitution Envelope', i.e. degree of substitution distribution. However, it is remarkable that the continuous flow synthesis process of the invention requires less than 50% of the sodium hydroxide that is used in the prior art batch process (Stella *et al*, 1994), and a 7:1 molar ratio of 1,4-butane sultone to  $\beta$ -cyclodextrin instead of the 10:1 used by the prior art method. This finding was completely unexpected, given that the inventors' expectation was at best an equivalent synthetic efficiency. Although the inventors do not wish to be bound by any theory, it would appear that the shielding of sodium hydroxide from 1,4-butane sultone up to the point where the reaction streams mix and the reaction takes place allows for an efficient activation of  $\beta$ -cyclodextrin hydroxyl groups at the point of the reaction with minimal degradation of 1,4-butane sultone to low molecular weight by-products. In short, using the continuous flow method of the invention, 1,4-butane sultone can react with  $\beta$ -cyclodextrin more efficiently and completely to generate higher degrees of substitution with more efficient use of the starting materials.

The average degree of substitution (ADS) can be readily determined using the following formula taken from US7, 635,77B2 (Antle, 2009):-

$$ADS = \frac{\sum ((PAC) \times (MT) / SCA \times 100)}{100}$$

Where PAC refers to the peak area count; MT refers to the migration time; and SCA refers to the summation of corrected area.

To test this hypothesis further, the inventors attempted to increase the ratio of sodium hydroxide to  $\beta$ -cyclodextrin, and the results are shown in Figures 14-20. In the prior art

batch process, according to Shah, this would have no beneficial effect on the average degree of substitution or the distribution of low degree of substitution species, i.e. a change in the substitution envelope, because the sodium hydroxide would simply destroy the 1,4-butane sultone before reaction with the hydroxyls could take place. In essence, there is a kinetic limit to the degree of substitution under batch processing conditions. Shah exploits this to maximise the degree of substitution and reduce the residual concentration of reactants.

Referring to Figure 14, there is shown the electropherograms for standard sample of Batch produced SBE- $\beta$ -CD and SBE- $\beta$ -CD sample produced by continuous flow synthesis. As can be seen, the continuous flow uses only 75% sodium hydroxide compared to the amount used in the batch process (Stella *et al*, 1994), and a 7:1 molar ratio of 1, 4-butane sultone to  $\beta$ -cyclodextrin instead of the 10:1 used by the prior art method. The electropherogram for the continuous flow shows a positive shift of the substitution envelope and change in the modal degree of substitution from ~ 6min to 8 min, and this indicates a higher average degree of substitution can be achieved more economically.

Referring to Figure 15, there is shown there is shown the electropherograms for standard sample of Batch produced SBE- $\beta$ -CD and SBE- $\beta$ -CD sample produced by continuous flow synthesis. As can be seen, the continuous flow uses the same amount of sodium hydroxide compared to the amount used in the batch process (Stella *et al*, 1994), and a 7:1 molar ratio of 1, 4-butane sultone to  $\beta$ -cyclodextrin instead of the 10:1 used by the prior art method. The electropherogram for the continuous flow shows a positive shift of the substitution envelope and a further change in the modal degree of substitution from ~ 6min to 8.5 min, and this indicates a higher average degree of substitution.

Referring to Figure 16, there is shown there is shown the electropherograms for standard sample of Batch produced SBE- $\beta$ -CD and SBE- $\beta$ -CD sample produced by continuous flow synthesis. As can be seen, the continuous flow uses 25% more sodium hydroxide compared to the amount used in the batch process (Stella *et al*, 1994), and a 7:1 molar ratio of 1, 4-butane sultone to  $\beta$ -cyclodextrin instead of the 10:1 used by the prior art method. The electropherogram for the continuous flow shows a positive shift of the substitution envelope and further change in the modal degree of substitution

from ~ 6min to 8 min, very small population of lower degrees of substitution (migration times ~2-7 min), and this indicates a higher degree of substitution.

Referring to Figure 17 there is shown the electropherograms for standard sample of  
5 Batch produced SBE- $\beta$ -CD and SBE- $\beta$ -CD sample produced by continuous flow  
synthesis. As can be seen, the continuous flow uses only 50% sodium hydroxide  
compared to the amount used in the batch process (Stella *et al*, 1994), and an increase  
from 7:1 to 10:1 molar ratio of 1, 4-butane sultone to  $\beta$ -cyclodextrin. As can be seen,  
there are 10 peaks for the CF method and only 9 peaks for the batch method. The  
10 number of peaks is indicative of the distribution of degree of substitution for the  
derivatives. However, the electropherogram for the continuous flow shows an intense  
peak at 5 minutes this possibly indicates the presence of a reaction impurity.

Referring to Figure 18, there is shown the electropherograms for standard sample of  
15 Batch produced SBE- $\beta$ -CD and SBE- $\beta$ -CD sample produced by continuous flow  
synthesis. The continuous flow uses only 75% sodium hydroxide compared to the  
amount used in the batch process (Stella *et al*, 1994), and an increase from 7:1 to 10:1  
molar ratio of 1, 4-butane sultone to  $\beta$ -cyclodextrin. The electropherogram for the  
continuous flow shows a positive shift of the substitution envelope and change in the  
20 modal degree of substitution from ~ 6min to 8 min, this indicates a higher average  
degree of substitution.

Referring to Figure 19, there is shown there is shown the electropherograms for  
standard sample of Batch produced SBE- $\beta$ -CD and SBE- $\beta$ -CD sample produced by  
25 continuous flow synthesis. The continuous flow uses the same amount of sodium  
hydroxide compared to the amount used in the batch process (Stella *et al*, 1994), and a  
10:1 molar ratio of 1, 4-butane sultone to  $\beta$ -cyclodextrin, identical conditions used by  
(Stella *et al*, 1994). The electropherogram for the continuous flow shows a positive shift  
of the substitution envelope and a change in the modal degree of substitution from ~ 6  
30 min to 8 min, a smaller population of lower degrees of substitution (migration time  
range 2-7 minutes) and this indicates a higher degree of substitution. Comparing the  
electropherogram at identical mole ratios of the material used, the flow method results  
in species with higher degrees of substitution suggesting a more efficient and hence a  
more economical production of cyclodextrin.

Referring to Figure 20, there is shown an electropherogram of batch-produced (Shah *et al*, 2000) and continuous flow-produced standard SBE- $\beta$ -CD. The continuous process used to produce the material shown in Figure 20 used 25% more sodium hydroxide than the batch process (Stella *et al*, 1994), with an increase in the molar ratio of 1,4-butane sultone to  $\beta$ -cyclodextrin from 7:1 to 10:1. Hence, the material produced by flow synthesis is novel and demonstrates a positive skew in the Substitution Envelope with a smaller population of lower degrees of substitution (migration time range 2-7 minutes) and the modal degree of substitution changing from ~6 minutes to ~8 minutes. It is concluded therefore that the continuous flow method of the invention results in an increase in efficiency (more efficient activation of  $\beta$ -cyclodextrin hydroxyl groups by sodium hydroxide; less consumption of 1, 4-butane sultone) resulting in a higher degree of substitution.

A number of experiments were carried out, in order to fully explore the effect of changing the  $\beta$ -CD: sodium hydroxide mass ratio, by altering the sodium hydroxide content between 0% to 200% compared to the amount used in the batch process (Stella *et al*, 1994). The results of this investigation have been highlighted in Table 3.

Table 3 -The effect of changing the NaOH:  $\beta$ -CD mole ratio by the changing the NaOH content; 100% nominal sodium hydroxide is equivalent to the base content used in US 5.376.645 (Stella *et al*, 1994).

Percentage of NaOH %	NaOH: $\beta$ -CD mole ratio	Observation(when reacted with butane sultone)
0	-	Very turbid unstable solution with solid white $\beta$ -CD precipitating out of solution
20	2:1	Less turbid immiscible solution with two layers formed.
25	3:1	Less turbid immiscible solution with two layers formed.
40	5:1	Less turbid immiscible solution with tiny butane sultone particles suspended
50	6:1	Butane sultone reacts with the $\beta$ -CD solution forming a single phase homogenous solution
75	9:1	Butane sultone reacts with the $\beta$ -CD solution forming a single phase homogenous solution
100	11:1	Butane sultone reacts with the $\beta$ -CD solution forming a single phase homogenous solution
125	14:1	Butane sultone reacts with the $\beta$ -CD solution forming a single phase homogenous solution
150	17:1	Butane sultone reacts with the $\beta$ -CD solution forming a single phase homogenous solution,

		solution becoming more viscous
160	18:1	Butane sultone reacts with the $\beta$ -CD solution forming a single phase homogenous solution, solution becoming more viscous
175	20:1	Butane sultone reacts with the $\beta$ -CD solution forming a single phase homogenous solution, solution becoming more viscous
200	22:1	Butane sultone reacts with the $\beta$ -CD solution forming a thick viscous paste

In the absence of base (i.e. 0% NaOH),  $\beta$ -CD was insoluble and therefore did not react with BS thus precipitating out. At 20-40% NaOH, the two phases would not mix, and  $\beta$ -CD could not react fully with BS. At 150% NaOH, the dialysed product could not be freeze-dried, and also the dialysis membrane was damaged by unreacted butane sultone and the very basic condition arising from high concentrations of sodium hydroxide, hence causing weakening and damaging the membrane. At 200% sodium hydroxide, a viscous paste was formed that prevented pumping of the reaction products. Hence, within the geometry of the apparatus used, 50-125% compared to the amount used in the batch process (Stella *et al*, 1994), would allow SBE- $\beta$ -CD to be manufactured using flow chemistry.

#### Example 2

The first application of SB- $\beta$ -CD in an injectable pharmaceutical drug product (i.e. voriconazole) is described in the 2003 Pfizer patent, US 6,632,803B1. The formulation of an injectable form of voriconazole is described in Table 4.

Table 4: Formulation of an injectable form of voriconazole using the SBE- $\beta$ -CD platform

Ingredient or Excipient	Purpose	Concentration in mg/ml in 1ml of injectable drug product
Voriconazole	Active Pharmaceutical Ingredient	10.0
SBE- $\beta$ -CD	Solubilising Agent	160.0
Water for Injections	Solvent vehicle	To 1.0ml

20

The manufacturing process is as follows:



1. Add SBE- $\beta$ -CD to 80% of the final volume of Water for Injections with constant stirring until dissolved;
2. Add the voriconazole and stir until dissolved;
3. Make up the solution to its final volume (hence concentration) with the  
5 remaining Water for Injections;
4. Filter the resulting solution through a sterilizing filter (0.22 $\mu$ m pore size) into a sterile container in a suitably validated GMP manufacturing area;
5. Fill into 20ml injection vials and stopper; and
6. Freeze-dry the product, stopper, over-cap and label.

10

The goal of this work was to try and develop innovative approaches to the manufacture and application of SBE- $\beta$ -CD in the pharmaceutical industry. As can be seen from Figure 23, use of the method of the invention means that three steps shown in Figure 22 can be omitted. It is evident on inspection of Figure 23 that by combining the two  
15 processes, three commercial advantages arise:

15

1. It becomes unnecessary to transport SBE- $\beta$ -CD from the fine chemical manufacturer to the customer. This would also include warehousing, etc.
2. SBECD could be manufactured on a just-in-time, just-enough basis.
3. One of the two expensive and time-consuming freeze-drying or spray drying  
20 process steps could be avoided.

20

### Example 3

The inventors have obtained Vapourtec flow chemistry equipment as illustrated in Figure 21, which is more suited to commercial manufacture than the 'hand built'  
25 reactors used to date. It was necessary to optimise the reaction to meet the specification criteria set out in Shah's patent with respect to residual  $\beta$ -cyclodextrin and 1, 4-butane sultone. In addition, the SBE- $\beta$ -CD effluent stream was conditioned to meet the requirements of pharmacopoeial Water for Injections monographs.

### Example 4

As aqueous solutions of  $\beta$ -CD are intrinsically pyrogenic, the batch process requires depyrogenation as part of the downstream purification. Using this CF manufacturing method, it is possible to depyrogenate the system in reservoir (4) prior to reaction than  
35 post reaction.

35

### Summary

The results described herein demonstrated that the continuous flow process chemistry is a more efficient way of producing SBECD and this is reflected in:-

- (i) the average degree of substitution,
  - 5 (ii) the low frequency of low degrees of substituted SBECD species;
  - (iii) production of SBECD with reduced quantities of starting materials;
  - (iv) the production of material, free from significant impurities, allowing avoidance of quenching and intensive downstream processing.
- 10 The frequency of low degree of substituted SBECD species using the prior art batch reaction is much higher than with using the continuous flow chemistry of the invention. The continuous flow method of the invention enables a greater reaction efficiency. The novel species produced by the continuous flow process have a higher degree of substitution with a tighter distribution of substitution, as well as a higher
- 15 average degree of substitution per se.

### Example 5

#### The CSTR-based Manufacturing Process

20 The aim of this work was to develop a continuous manufacturing process for the manufacture of sulphobutylether  $\beta$ -cyclodextrin. It is known that mixing the  $\beta$ -cyclodextrin and sodium hydroxide in a controlled way is important to the success of the method of the invention. Firstly, it is important that both the aqueous, basified (i.e. activated)  $\beta$ -cyclodextrin solution (4) is heated within the range of 60-90°C prior to

25 mixing. Secondly, as  $\beta$ -cyclodextrin is added to the sodium hydroxide solution, a three stage 'activation' process occurs:-

- 1) Firstly, it takes a finite time to add the  $\beta$ -cyclodextrin into the reservoir vessel containing aqueous sodium hydroxide.
- 2) Next, the  $\beta$ -cyclodextrin dissolves in the sodium hydroxide solution.
- 30 3) Finally, and more significantly, an initial solution straw colouration progressively 'deepens' which is considered to be a sign of completion of the activation of the  $\beta$ -cyclodextrin by sodium hydroxide. With the deep colouration present, and the reagents at the specified temperature, mixing then proceeds.

The reaction proceeds in a continuous manner, i.e. once the pumps (8, 10) have started they are not switched off until completion of the reaction. It is now generally considered that the main reaction takes place in the first CSTR chamber (14). The reaction takes place at a low temperature (65-100°C) and atmospheric pressure. The CSTR-process handles the  $\beta$ -cyclodextrin-sodium hydroxide solutions and butane sultone as an immiscible, two phase system.

It is known that some prior art methods create the conditions where butane sultone and the aqueous  $\beta$ -cyclodextrin-sodium hydroxide streams may become miscible; miscibility is generally considered to be an important process condition of flow chemistry processing. Judging by the Average Degrees of Substitution achieved by prior art methods, the goal of miscibility appears to have been achieved at the expense of butane sultone stability which has led to very low Average Degrees of Substitution.

The method of the invention however involves carefully reacting sodium hydroxide with  $\beta$ -cyclodextrin to activate it in advance of a two-phase continuous flow reaction, and this is important in creating a highly efficient reaction and a controllable Average Degree of Substitution in a small footprint. The activation process must be conducted at elevated temperature (65-100°C) and for a specified time after the  $\beta$ -cyclodextrin has dissolved in the aqueous sodium hydroxide solution. The activation process has typically taken 30 minutes at this scale; the major indicator of completion is the colour change which could be measured colourimetrically.

It is highly unlikely that this time and temperature dependent activation could be achieved in any prior art batch or continuous flow methods. Whilst the reaction procedure employs a CSTR, it is a surrogate for the use of a flow reactor with efficient mixing and of suitable length to allow the reaction to complete within the reactor tubing. The activation of  $\beta$ -cyclodextrin is an important process parameter prior to reaction and this must continue irrespective of the reactor architecture.

30

### Example 6

#### Analytical Methodology for High Degree of Substitution SBECD Species

The original work described herein was based on the capillary electrophoresis method for sulphobutylether  $\beta$ -cyclodextrin described in the United States Pharmacopoeia 35/National Formulary 30 (USP35/NF30). The output of the analysis, the so-called electropherogram, is shown in Figures 5 -20.

It can be seen that, whilst a qualitative idea of the substitution pattern is possible, it is not easy to integrate the areas under the peaks reliably due to the shifting baseline. It is also evident from Figure 14-16 and 18-20 that peak resolution deteriorates with increasing substitution. Peaks appear to merge after approximately 8 minutes into the run which makes it difficult to quantify the pattern of substitution. Furthermore, the true nature of the substitution envelope could not be clearly understood.

Alternative methods have been proposed for the analysis of cyclodextrin derivatives using high performance liquid chromatography (J. Szeman 2006). This has been recently updated and applied to sulphobutylether  $\beta$ -cyclodextrin (J. Szeman 2012). The method is based on a specialised ion-exchange HPLC column, CD-Screen-DAP, where a bonded dimethylamino phenyl function includes in the eluting sulphobutylether  $\beta$ -cyclodextrin to improve the selectivity of the analytical method. High performance liquid chromatography with evaporative light scattering detection (ELSD) is used for the separation of sulphobutylether  $\beta$ -cyclodextrin into its substituted constituents in order to determine the average degree of substitution. Identification of each substituted cyclodextrin is determined by comparing the retention times of the standard, produced by the method described in US 6,153,746 (Shah, 2000), and tested according to the methods described in USP35/NF30 with that of a material produced using the processing method described herein.

The chromatographic conditions are summarised as follows:

#### 25 Reagents

1. Acetonitrile, HPLC grade
2. 0.5% triethylamine-acetic acid buffer, pH=5.0

#### Chromatographic Conditions

Instrument:	Agilent 1100 series or equivalent HPLC instrument
Software:	OpenLAB or similar system
Column:	CD-Screen-DAP, 3 $\mu$ m, 150 x 4.0mm, CDS-DAP-1504-03
Column temperature:	25°C $\pm$ 1°C
Mobile phase A (MPA):	0.5% triethylamine-acetic acid buffer, pH=5
Mobile phase B (MPB):	acetonitrile, HPLC grade

Flow rate:	1.0 ml/min			
Gradient Ratio	Time (min)	0	6	15
	MPA (%)	100	50	50
	MPB (%)	0	50	50
Detection:	ELSD			
Injection volume:	5 $\mu$ l			
Concentration:	10 mg/ml			
Acquisition time:	15 minutes with post-time of 5 minutes			
Needle wash:	none			

#### ELSD Conditions

Instrument:	Alltech ELSD 2000 or equivalent ELSD instrument
Tube temperature:	115°C
Gas flow (nitrogen):	3.2 L/min
Gain:	2
Impactor:	Off

5 A typical chromatogram for the standard material produced using a prior art batch method described in US 6,153,746 (Shah, 2000) is shown in Figure 24. Upon further examination of Figure 24, it can be seen that material produced by the prior art process has a range of substitution from Degree of Substitution 2 to 10. The Average Degree of Substitution is 6.6.

10 The chromatogram for the sulphobutylether  $\beta$ -cyclodextrin produced using the method of the invention and corresponding to Figure 20 is shown in Figure 25. It is readily seen that a stable baseline is generated facilitating integration and subsequent processing of the signal. Figure 25 indicates that material produced using the invention has a range of substitution from Degree of Substitution 3 to 13. The Average Degree of Substitution is 10.4, as described below.

15 In addition to producing sulphobutylether  $\beta$ -cyclodextrin with a higher Average Degree of Substitution, the method of the invention, under these conditions, does not produce any detectable di-substituted sulphobutylether  $\beta$ -cyclodextrin and produces significant quantities of Degree of Substitution 11-13 not detected in the US 6,153,746 (Shah, 20 2000) material.

The inventors also have the corresponding HPLC traces corresponding to the electropherograms in Figures 12 to 20. The power of the technique gives access to descriptive statistics.

5

The Average Degree of Substitution is discussed herein using the standard method of calculation. This method was modified for use with HPLC outputs and is explained below.

10 The Individual Degree of Substitution ( $IDS_n$ ) is calculated using the following formula:

$$IDS_n = (PA_n / \sum PA) \times 100 \dots\dots(1)$$

$$\text{where } \sum PA = \sum PA_L + PA_{L+1} \dots PA_H \dots\dots(2)$$

15

n = Substitution Number

PA = Peak area

$PA_L$  = Peak area corresponding to lowest degree of substitution seen on the chromatogram

20  $PA_H$  = Peak area corresponding to highest degree of substitution seen on the chromatogram

These data can be used to describe an 'Envelope of Substitution' which is used as the basis of a specification element in USP35/NF30, where each  $IDS_n$  should fall within  
25 the series of specified Proven Acceptable Ranges thus defining the 'Substitution Envelope'.

The Individual Degree of Substitution metrics are then used to calculate the Average Degree of Substitution as follows:

30

$$ADS = \sum (IDS_n \times n) / 100 \dots\dots(3)$$

Table 1 shows data for the chromatogram shown in Figure 25. This can now be processed using Equations 1-3 as follows:

35

Table 1: Integration table of the chromatogram of sulphobutylether  $\beta$ -cyclodextrin produced by the method of the invention. Reaction conditions correspond to those used to generate Figure 20 HPLC conditions are based on a gradient separation with a CD-Screen-DAP column and ELSD detection

5

Substitution Number:	Retention Time:	Peak Area:
3	5.77	0.271
4	6.29	0.507
5	6.67	1.455
6	6.98	3.142
7	7.33	5.221
8	7.63	13.283
9	7.99	24.842
10	8.31	46.056
11	8.58	53.920
12	8.90	39.220
13	9.28	16.570

Individual Degree of Substitution – specimen calculation

$$\sum PA = \sum PA_L + PA_{L+1} \dots PA_H$$

10

$$\sum PA = PA_3 + PA_4 + PA_5 + PA_6 + PA_7 + PA_8 + PA_9 + PA_{10} + PA_{11} + PA_{12} + PA_{13}$$

$$\sum PA = 0.271 + 0.507 + 1.455 + 3.142 + 5.221 + 13.283 + 24.842 + 46.056 + 53.920 + 39.220 + 16.570$$

15

$$\sum PA = 204.487$$

$$IDS_n = (PA_n / \sum PA) \times 100$$

20

$$IDS_3 = (PA_3 / \sum PA) \times 100 = (0.271 / 204.487) \times 100 = 0.132527$$

$$IDS_4 = (PA_4 / \sum PA) \times 100 = (0.507 / 204.487) \times 100 = 0.247938$$

$$IDS_5 = (PA_5 / \sum PA) \times 100 = (1.455 / 204.487) \times 100 = 0.711537$$

	$IDS_6 = (PA_6/\sum PA) \times 100 = (3.142/204.487) \times 100 =$	1.536528
	$IDS_7 = (PA_7/\sum PA) \times 100 = (5.221/204.487) \times 100 =$	2.553219
	$IDS_8 = (PA_8/\sum PA) \times 100 = (13.283/204.487) \times 100 =$	6.495767
	$IDS_9 = (PA_9/\sum PA) \times 100 = (24.842/204.487) \times 100 =$	12.14845
5	$IDS_{10} = (PA_{10}/\sum PA) \times 100 = (46.056/204.487) \times 100 =$	22.5277
	$IDS_{11} = (PA_{11}/\sum PA) \times 100 = (53.920/204.487) \times 100 =$	26.36842
	$IDS_{12} = (PA_{12}/\sum PA) \times 100 = (39.220/204.487) \times 100 =$	19.1797
	$IDS_{13} = (PA_{13}/\sum PA) \times 100 = (16.570/204.487) \times 100 =$	8.103205

10 Average Degree of Substitution – specimen calculation

$$ADS = \sum (IDS_n \times \text{substitution number}) / 100$$

n = substitution number

15  $IDS_n \times \text{substitution number}$

	$IDS_3 \times 3 = 0.132527 \times 3 =$	0.397580
	$IDS_4 \times 4 = 0.247938 \times 4 =$	0.991750
	$IDS_5 \times 5 = 0.711537 \times 5 =$	3.557683
20	$IDS_6 \times 6 = 1.536528 \times 6 =$	9.219168
	$IDS_7 \times 7 = 2.553219 \times 7 =$	17.872530
	$IDS_8 \times 8 = 6.495767 \times 8 =$	51.966140
	$IDS_9 \times 9 = 12.14845 \times 9 =$	109.336046
	$IDS_{10} \times 10 = 22.5277 \times 10 =$	225.227032
25	$IDS_{11} \times 11 = 26.36842 \times 11 =$	290.052668
	$IDS_{12} \times 12 = 19.1797 \times 12 =$	230.156440
	$IDS_{13} \times 13 = 8.103205 \times 13 =$	105.341660

30  $\sum (IDS_n \times \text{substitution number}) = (IDS_3 \times 3) + (IDS_4 \times 4) + (IDS_5 \times 5) + (IDS_6$   
 $\times 6) + (IDS_7 \times 7) + (IDS_8 \times 8) + (IDS_9 \times 9) + (IDS_{10} \times 10) + (IDS_{11} \times 11) + (IDS_{12} \times$   
 $12) + (IDS_{13} \times 13)$

35  $\sum (IDS_n \times \text{substitution number}) = 0.397580 + 0.991750 + 3.557683 +$   
 $9.219168 + 17.872530 + 51.966140 + 109.336046 + 225.227032$   
 $+ 290.052668 + 230.156440 + 105.341660$



- 31 -

$$\Sigma(\text{IDS}_n \times \text{substitution number}) = 1044.118697$$

$$\text{ADS} = \Sigma(\text{IDS}_n \times \text{substitution number}) / 100 = 1044.118697 / 100 = 10.44$$

5

$$\underline{\text{Average Degree of Substitution}} = 10.4$$

The material described in Figure 25 therefore has an average degree of substitution of 10.4, which is substantially higher than material produced by batch manufacture or fully continuous flow process.

10

#### Example 7

##### The Manipulation of Average Degree of Substitution Using Sodium Hydroxide

The samples of sulphobutylether  $\beta$ -cyclodextrin that have been produced have now been reanalysed by HPLC. The data has been processed to generate the Average Degrees of Substitution. The table shown in Figure 26 shows a summary of the data adding the Average Degree of Substitution data and dispersion data.

15

In general, it can be seen from the Table in Figure 26 that an increase in the content of sodium hydroxide will increase the Average Degree of Substitution of sulphobutylether  $\beta$ -cyclodextrin. Furthermore, the more extreme CSTR reactions produce material with Average Degree of Substitution at levels not previously seen using batch or continuous flow reactions. The higher Average Degree of Substitution arises due to the presence of highly substituted species with an Individual Degree of Substitution in excess of 10.

20

The table shown in Figure 27 describes an attempt to produce material compliant with the USP35/NF30 monograph with the use of more moderate reaction conditions. Analysis indicated that the  $\text{IDS}_n$  'envelope' present in the CSTR 10:1 butane sultone:  $\beta$ -cyclodextrin molar ratio and a 6:1 Sodium hydroxide to  $\beta$ -cyclodextrin molar ratio reaction produced the nearest match. It can be seen that, using the HPLC method, the US 6,153,746 (Shah, 2000) material broadly complies with the specification. The material produced by the CSTR method is less compliant due to a more symmetrical distribution of  $\text{IDS}_n$ . Whilst compliant material has yet to be produced, the ability to control the process with respect to stoichiometry indicates that, with further process refinement, this should be possible.

25

30

35

Example 8Novelty of SBE- $\beta$ -CD prepared using the method of the invention

Historically, the number of pendant sulphobutyl groups on the cyclodextrin determines  
 5 the Individual Degree of Substitution metric and the Substitution Envelope. The  
 weighted average of the abundance of each species gives rise to the Average Degree of  
 Substitution metric. There are three possibilities for defining the novelty of the SBE- $\beta$ -  
 CD prepared using the method of the invention:

10 **a) Substitution**

What is really important, chemically, is the number of cyclodextrin rings available to  
 form inclusion complexes with drugs, because this is what makes the cyclodextrin work.  
 Whilst the parent beta cyclodextrin gives the greatest number of rings for a given  
 molecular mass, it is believed to be nephrotoxic and this makes substitution necessary.  
 15 It is known that increasing the degree of substitution increases the aqueous solubility of  
 the cyclodextrin and high solubility of the cyclodextrin is a pre-requisite to achieving a  
 high payload drug solubility. The following table summarises substitution molecular  
 mass ratios:

IDS	Beta cyclodextrin Molecular Weight	Proton Loss	Molecular Weight After Proton Loss	Butane sultons Group Contribution	Molecular Weight for IDS	Substitution Molecular Mass Fraction
1	1134.98	-1	1133.98	136.17	1270.15	0.11
2	1134.98	-2	1132.98	272.34	1405.32	0.19
3	1134.98	-3	1131.98	408.51	1540.49	0.26
4	1134.98	-4	1130.98	544.68	1675.66	0.32
5	1134.98	-5	1129.98	680.85	1810.83	0.37
6	1134.98	-6	1128.98	817.02	1946.00	0.42
7	1134.98	-7	1127.98	953.19	2081.17	0.45
8	1134.98	-8	1126.98	1089.36	2216.34	0.49
9	1134.98	-9	1125.98	1225.53	2351.51	0.52
10	1134.98	-10	1124.98	1361.70	2486.68	0.54
<b>11</b>	<b>1134.98</b>	<b>-11</b>	<b>1123.98</b>	<b>1497.87</b>	<b>2621.85</b>	<b>0.57</b>
<b>12</b>	<b>1134.98</b>	<b>-12</b>	<b>1122.98</b>	<b>1634.04</b>	<b>2757.02</b>	<b>0.59</b>
<b>13</b>	<b>1134.98</b>	<b>-13</b>	<b>1121.98</b>	<b>1770.21</b>	<b>2892.19</b>	<b>0.61</b>

The molecular mass of beta cyclodextrin is 1134.98 Dalton. To create a mono-substituted beta cyclodextrin, a proton is removed, and replaced with a linear butane sultone function with a molecular mass of 136.17 Dalton. The resulting molecular mass of individual degree of substitution (IDS), where n=1 is 1270.15 Dalton. If one considers  
 5 the mass associated with the cyclodextrin ring as a fraction of the total mass, it is possible to calculate a Substitution Molecular Mass Fraction. This means that 11% of the mass is associated with the substituent functions (or 89% is associated with the cyclodextrin ring function). The table shows these values up to the SBE- $\beta$ -CD prepared using the method of the invention, having a surprisingly high IDS = 13 species.

10

The values of individual degree of substitution (IDS) and Substitution Molecular Mass Fraction (SMF) shown in the above table have been plotted out on Figure 28, and the relationship can be seen. The inventors believe that, to date, SBE- $\beta$ -CD with an SMF greater than 0.57 has not been previously reported, and as such the composition is  
 15 novel *per se*.

### b) Molecular Weight

This is the first report of a derivatised species with a molecular weight in excess of 2486.68 Dalton or within the range 2621.85 - 2892.19. Referring to Figure 29, there is  
 20 shown the relationship between individual degree of substitution and molecular weight. Molecular weight is believed to be an alias for Individual Degree of Substitution and so the Substitution Molecular Mass Fraction (SMF) may be the better choice.

### c) Substitution Envelope

25 When considering Column 2 of Figure 27, it is possible to define a novel peak area limit as follows:

IDS <sub>n</sub>	USP-NF Peak Area Percentage Lower Limit	USP-NF Peak Area Percentage Upper Limit	Range	Shah	Novel Peak Area Percentage Lower Limit	Novel Peak Area Percentage Upper Limit	Range	CSTR 10:1 and +25%
1	0.00	0.30	0.30	0.00	0.00	0.00	0.00	0.00
2	0.00	0.90	0.90	0.13	0.00	0.00	0.00	0.00
3	0.50	5.00	4.50	0.88	0.00	0.30	0.30	0.10
4	2.00	10.00	8.00	4.91	0.00	0.90	0.90	0.20
5	10.00	20.00	10.00	14.61	0.50	5.00	4.50	0.70

6	15.00	25.00	10.00	25.45	0.50	5.00	4.50	1.50
7	20.00	30.00	10.00	29.50	0.50	5.00	4.50	2.60
8	10.00	25.00	15.00	19.01	2.00	10.00	8.00	6.50
9	2.00	12.00	10.00	4.99	10.00	20.00	10.00	12.10
10	0.00	4.00	4.00	0.51	15.00	25.00	10.00	22.50
11	0.00	0.00	0.00	0.00	20.00	30.00	10.00	26.40
12	0.00	0.00	0.00	0.00	10.00	25.00	15.00	19.20
13	0.00	0.00	0.00	0.00	2.00	12.00	10.00	8.10
14	0.00	0.00	0.00	0.00	0.00	4.00	4.00	0.00

The USP-NF Peak Area Percentage describes a series of Proven Acceptable Ranges for an upper and lower distribution of IDS<sub>n</sub> in which a 'Substitution Envelope' resides. With a shift in IDS<sub>n</sub> to higher values using the process of the invention, it is possible to shift the envelope. As shown in Figure 27, it is possible to 'de-tune' the process of the invention to broadly comply with the USP-NF Envelope, and this is not possible using the fully batch or fully continuous processes described in the prior art.

#### Summary

Using a novel, improved HPLC analytical method, the inventors have validated their earlier observations described herein. The technique has allowed them to produce descriptive statistics for high degree of substitution material. The sulphobutylether  $\beta$ -cyclodextrin composition, produced by the CSTR process according to the invention described herein, is novel in two respects: (i) it has an unprecedented high average degree of substitution; and (ii) the existence of highly substituted species with IDS<sub>n</sub> higher than 10. The CSTR process depends upon pre-activation of the  $\beta$ -cyclodextrin feedstock by sodium hydroxide where the extent of activation determines the Average Degree of Substitution. The process allows control of Average Degree of Substitution by varying the sodium hydroxide concentration. The process can be used to produce material with a high Average Degree of Substitution. It will be possible to manufacture material compliant with the USP35/NF30 specification for sulphobutylether  $\beta$ -cyclodextrin. The process enables the production of sulphobutylether  $\beta$ -cyclodextrin on a 'just in time', 'just enough' basis in a small manufacturing footprint.

#### REFERENCES

J. Szeman, K. Csabai, K. Kekesi, L. Szente, G. Varga. "Novel stationary phases for high-performance liquid chromatography." *Journal of Chromatography A*, 2006: 76-82.

J. Szeman, T. Sohajda, E. Olah, E. Varga, K. Csabai, G. Varga, L. Szente.  
“Characterization of Randomly Substituted Anionic Cyclodextrin Derivatives  
with Different Analytical Methods.” *16th International Cyclodextrin  
Symposium*. Tianjin, China, 2012.

**Claims**

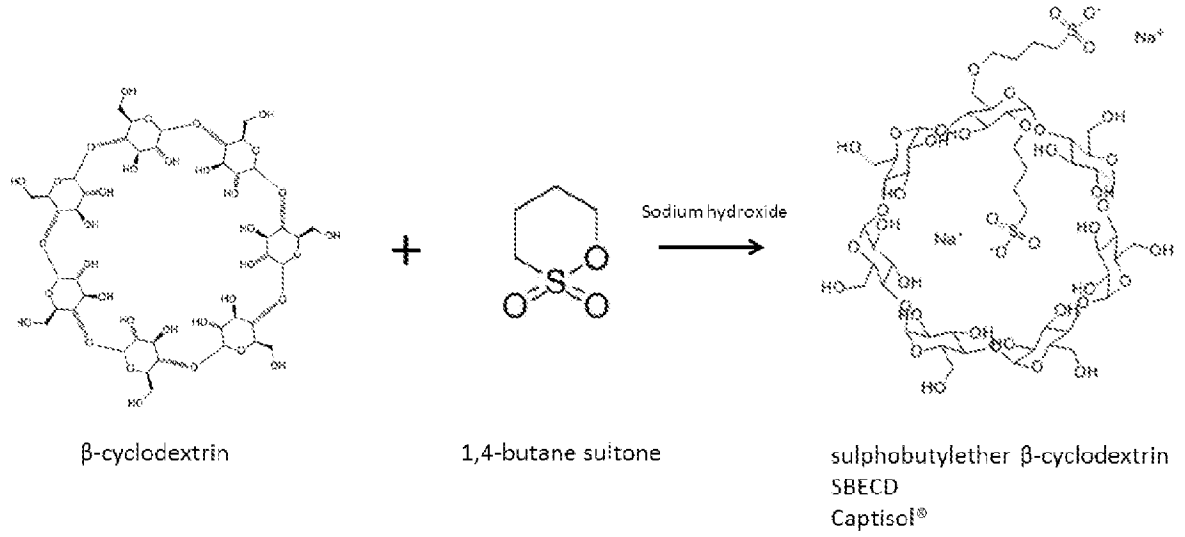
1. A method for preparing sulphoalkyl ether- $\beta$ -cyclodextrin, the method comprising contacting cyclodextrin with a base to form activated cyclodextrin, and separately contacting the activated cyclodextrin with an alkyl sultone to form  
5 sulphoalkyl ether- $\beta$ -cyclodextrin, characterised in that the sulphoalkylation reaction is carried out under continuous flow conditions.
2. A method according to claim 1, wherein the activation reaction is carried out as a batch process.  
10
3. A method according to either claim 1 or claim 2, wherein the base comprises an alkali metal hydroxide, such as sodium hydroxide, lithium hydroxide or potassium hydroxide, preferably sodium hydroxide.
- 15 4. A method according to any preceding claim, wherein the molar ratio of base to cyclodextrin is within the range of 2:1 to 22:1, or 6:1 to 20:1, or 6:1 to 15:1.
5. A method according to any preceding claim, wherein the method comprises controlling the average degree of substitution (ADS) of sulphoalkyl ether  $\beta$ -cyclodextrin  
20 in the sulphoalkylation reaction by varying the base concentration in the activation reaction.
6. A method according to any preceding claim, wherein the cyclodextrin is  $\alpha$ -,  $\beta$ - or  $\gamma$ -cyclodextrin.  
25
7. A method according to any preceding claim, wherein cyclodextrin is  $\beta$ -cyclodextrin.
8. A method according to any preceding claim, wherein the alkyl sultone  
30 comprises 1, 4-butane sultone.
9. A method according to any preceding claim, wherein the sulphoalkyl ether- $\beta$ -cyclodextrin comprises sulphobutyl ether  $\beta$ -cyclodextrin (SBE- $\beta$ -CD).
- 35 10. A method according to any preceding claim, wherein the activation reaction is conducted at atmospheric pressure.

11. A method according to any preceding claim, wherein the activation reaction is carried out in a first reservoir vessel at a temperature of about 50 to 95 °C, preferably 60 to 70°C.
- 5
12. A method according to claim 11, wherein the alkyl sultone is contained within a second reservoir vessel, and the first and second vessels are not directly connected to each other, such that the sultone and the base do not react with each other.
- 10
13. A method according to claim 12, wherein the activated cyclodextrin and the alkyl sultone are fed to a confluent 3-way junction where they are allowed to react to produce the substituted sulphoalkyl ether  $\beta$ -cyclodextrin.
14. A method according to any preceding claim, wherein the molar ratio of sultone to cyclodextrin is between about 7:1 and 33:1, preferably 7:1 to 17:1.
- 15
15. A method according to any preceding claim, wherein the sulphoalkylation reaction is conducted at a temperature of 60 to 100 °C, preferably 60 to 70°C.
- 20
16. A method according to any preceding claim, wherein the sulphoalkylation reaction is conducted at atmospheric pressure.
17. A method according to any preceding claim, wherein the alkylation reaction is carried out in a continuous stirred tank reactor (CSTR).
- 25
18. A method according to any preceding claim, wherein the average degree of substitution (ADS) of the sulphoalkyl ether  $\beta$ -cyclodextrin that is produced is greater than 7, preferably 7.3 or more, more preferably 8 or more, even more preferably 9 or more, and most preferably 10 or more.
- 30
19. Use of sodium hydroxide concentration for controlling the average degree of substitution (ADS) of sulphoalkyl ether  $\beta$ -cyclodextrin produced in a sulphoalkylation reaction between activated cyclodextrin and an alkyl sultone.
- 35
20. Sulphoalkyl ether- $\beta$ -cyclodextrin obtained or obtainable by the method according to any one of claim 1-18.

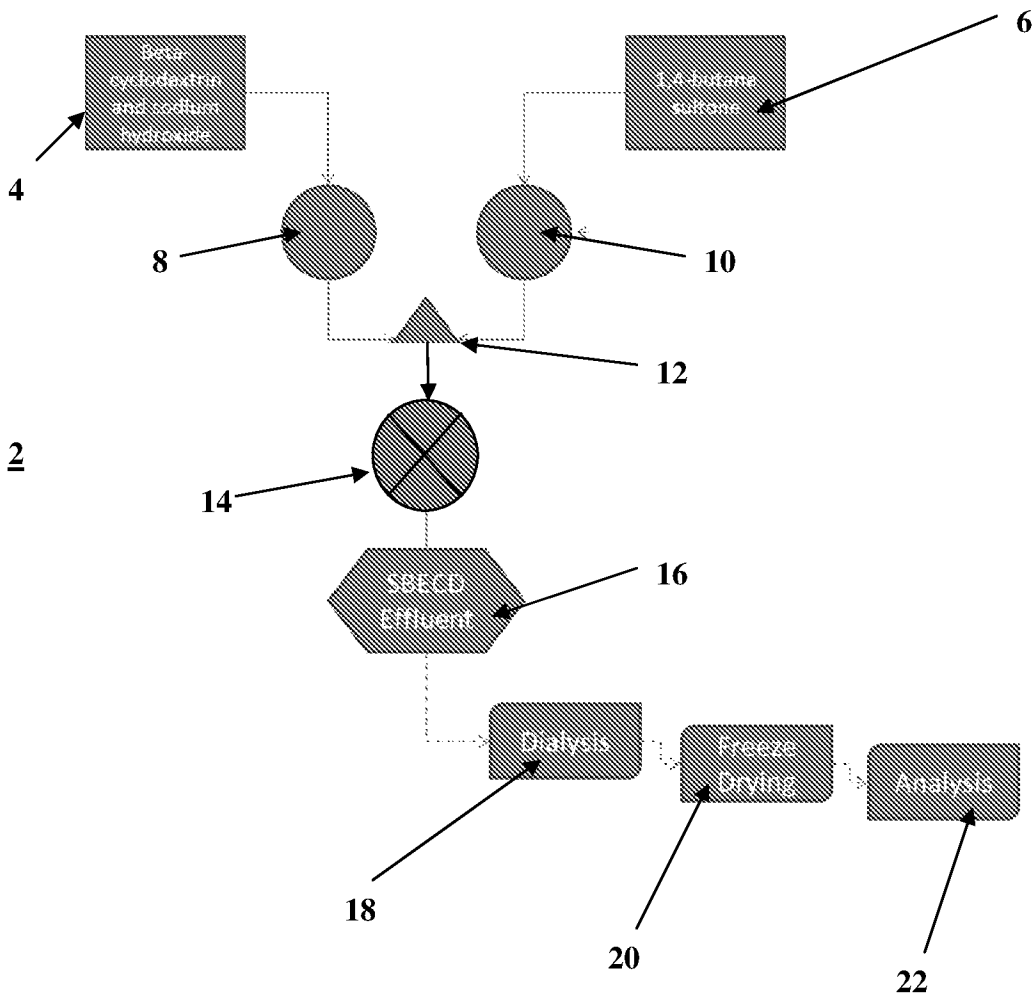
21. A composition comprising sulphobutyl ether  $\beta$ -cyclodextrin (SBE- $\beta$ -CD), wherein the average degree of substitution (ADS) is 7.3 or more, preferably 8 or more, even more preferably 9 or more, and most preferably 10 or more.
- 5
22. A composition according to claim 21, wherein the sulphobutyl ether  $\beta$ -cyclodextrin (SBE- $\beta$ -CD) is produced by the method according to any one of claim 1-18.
23. A composition according to either claim 21 or claim 22, wherein the  
10 composition comprises SBE- $\beta$ -CD having a Substitution Molecular Mass Fraction (SMF) greater than 0.57, more preferably greater than 0.58, and even more preferably greater than 0.59.
24. Use of the sulphoalkyl ether  $\beta$ -cyclodextrin according to claim 20, or the  
15 composition according to any one of claims 21-23, as a drug delivery system.
25. Use according to claim 24, wherein the drug delivery system is an excipient, which exhibits little or no side effects with regard to renal physiology.
- 20 26. Use according to either claim 24 or claim 25, wherein the sulphoalkyl ether- $\beta$ -cyclodextrin comprises sulphobutyl ether  $\beta$ -cyclodextrin (SBE- $\beta$ -CD).
27. A pharmaceutical excipient comprising the sulphoalkyl ether  $\beta$ -cyclodextrin according to claim 20, or the composition according to any one of claims 21-23.
- 25
28. An excipient according to claim 27, wherein the sulphoalkyl ether- $\beta$ -cyclodextrin comprises sulphobutyl ether  $\beta$ -cyclodextrin (SBE- $\beta$ -CD).
29. A method of preparing a pharmaceutical composition, the method comprising  
30 preparing the pharmaceutical excipient according to either claim 27 or claim 28, and contacting the excipient with an active pharmaceutical ingredient (API) to produce a pharmaceutical composition.
30. A method according to claim 29, wherein the active pharmaceutical ingredient  
35 comprises voriconazole, ziprasidone, aripiprazole, maropitant, amiodarone, or carfilzomib, or their salts, solvates, polymorphs, pseudopolymorphs or co-crystals.



**Figure: 1**



**Figure: 2**



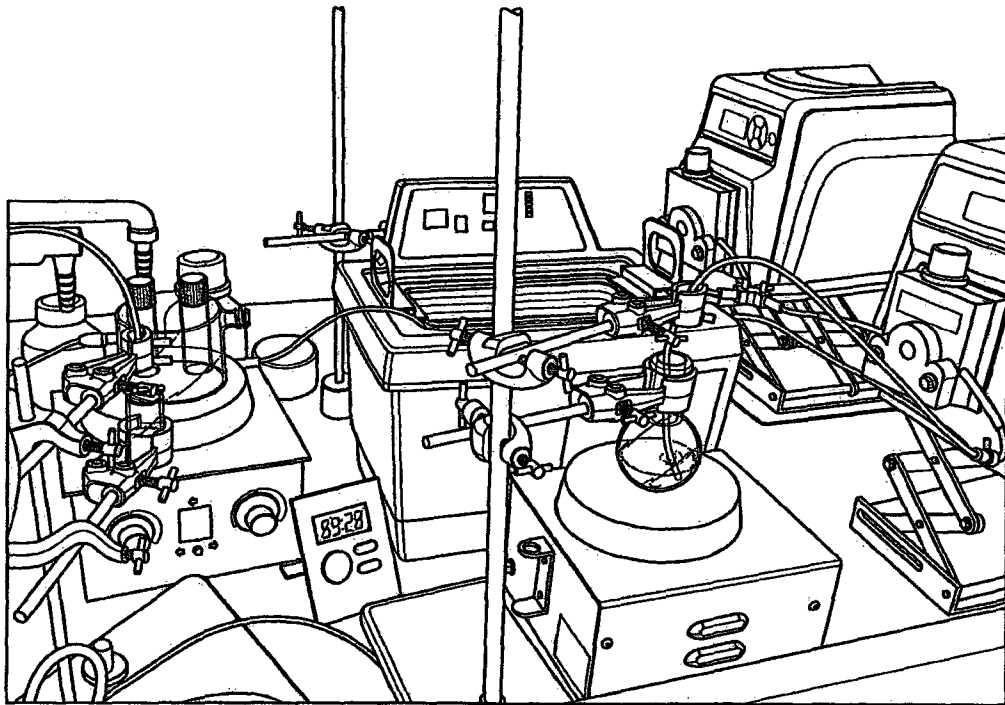


FIG. 3

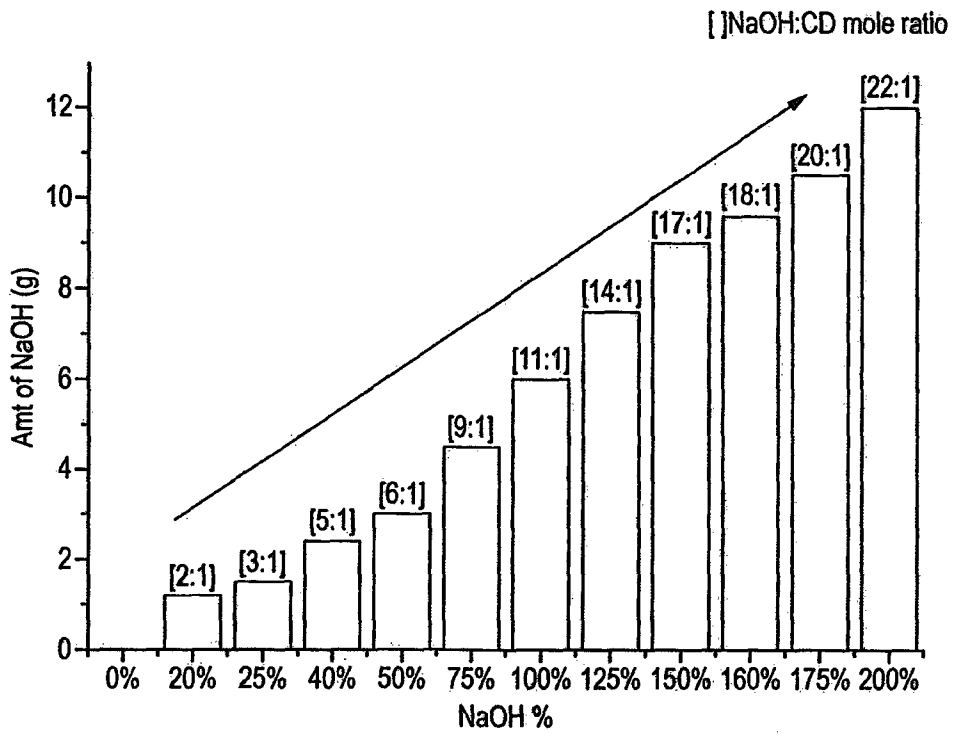
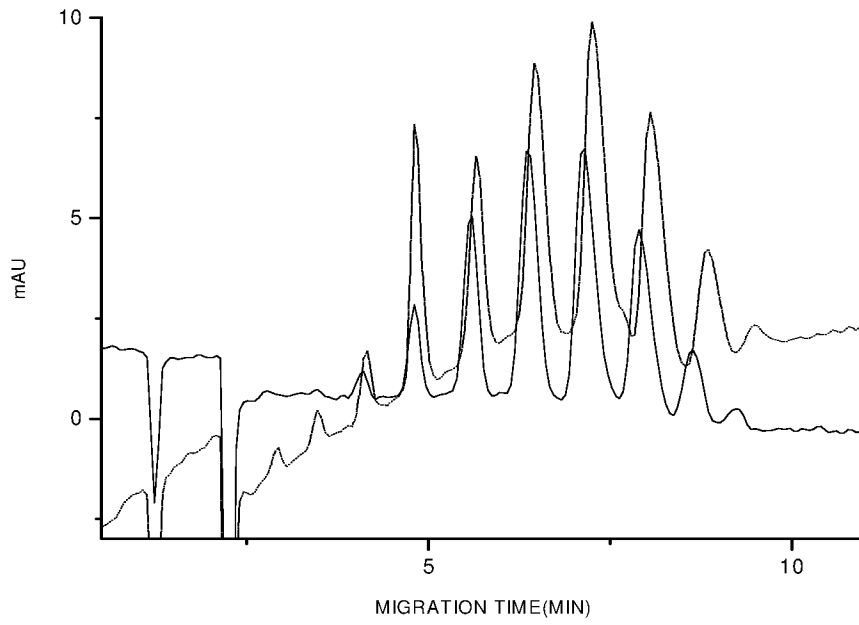
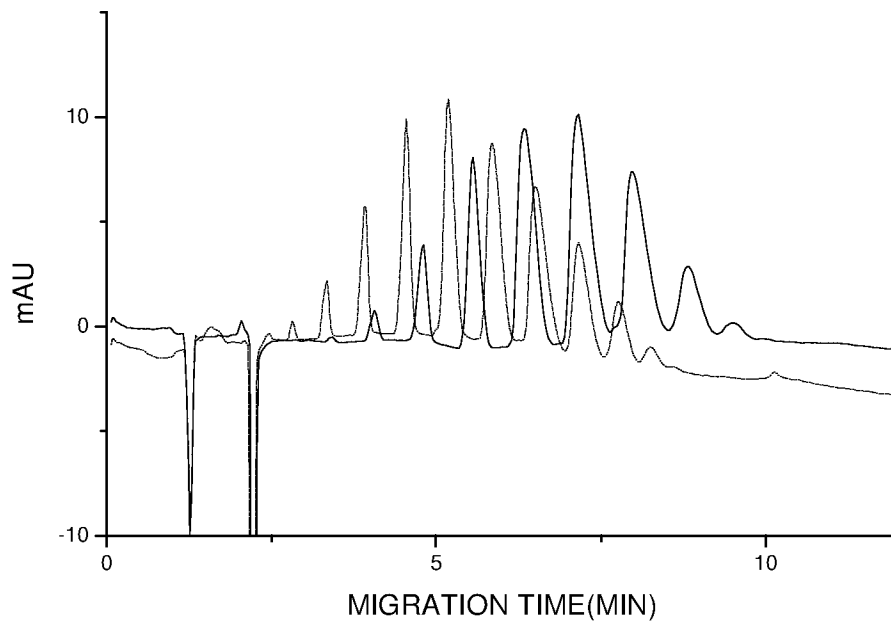


FIG. 4

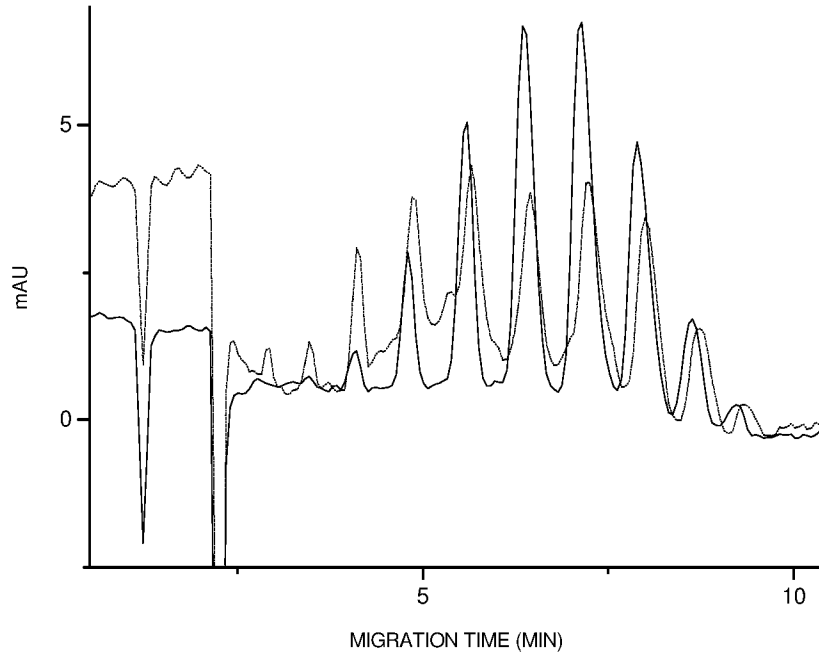
**Figure: 5**



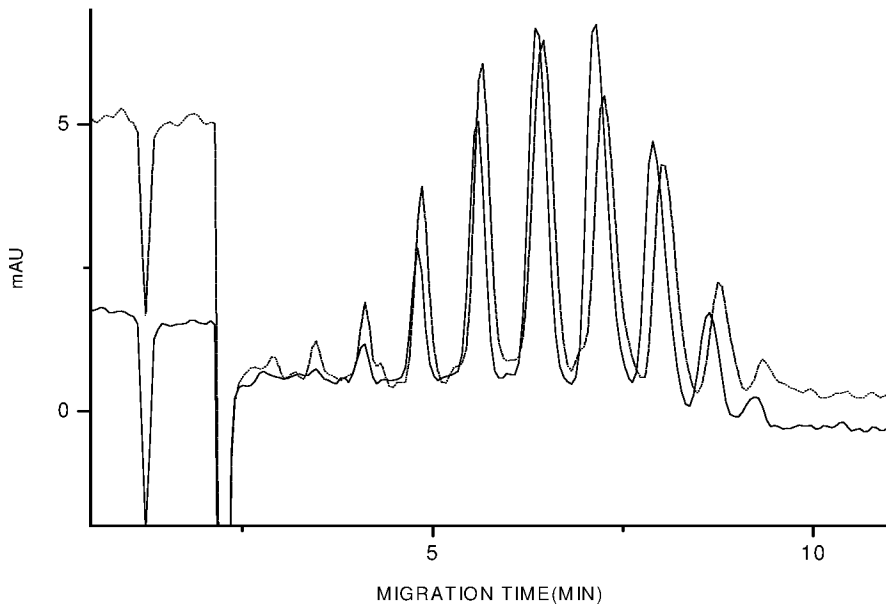
**Figure: 6**



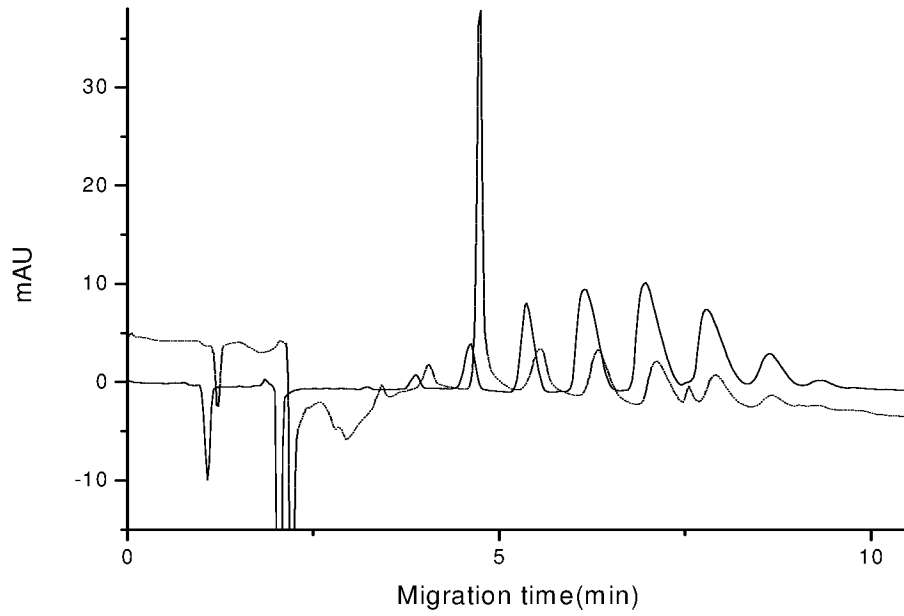
**Figure: 7**



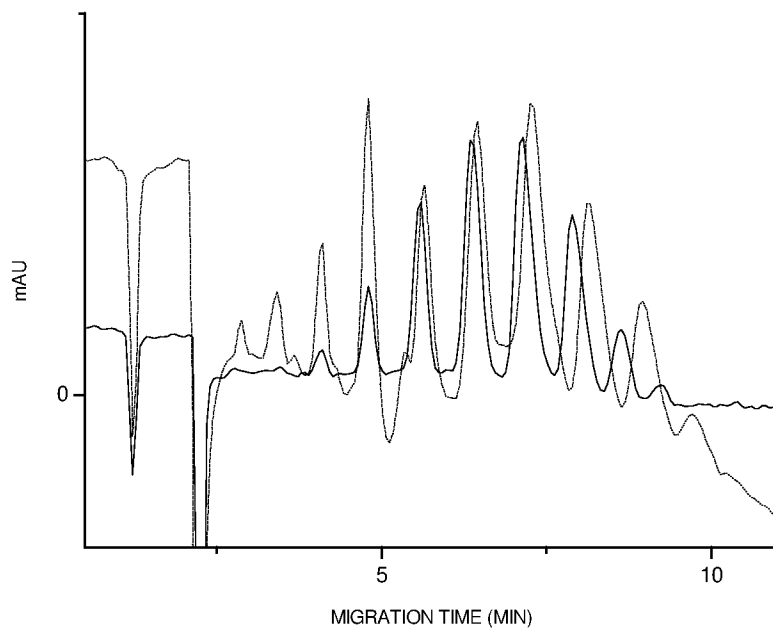
**Figure: 8**



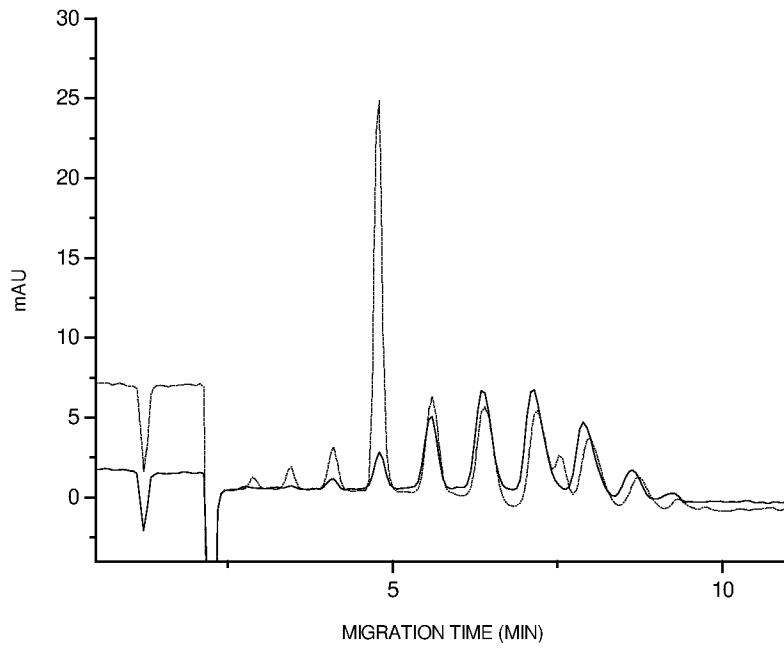
**Figure: 9**



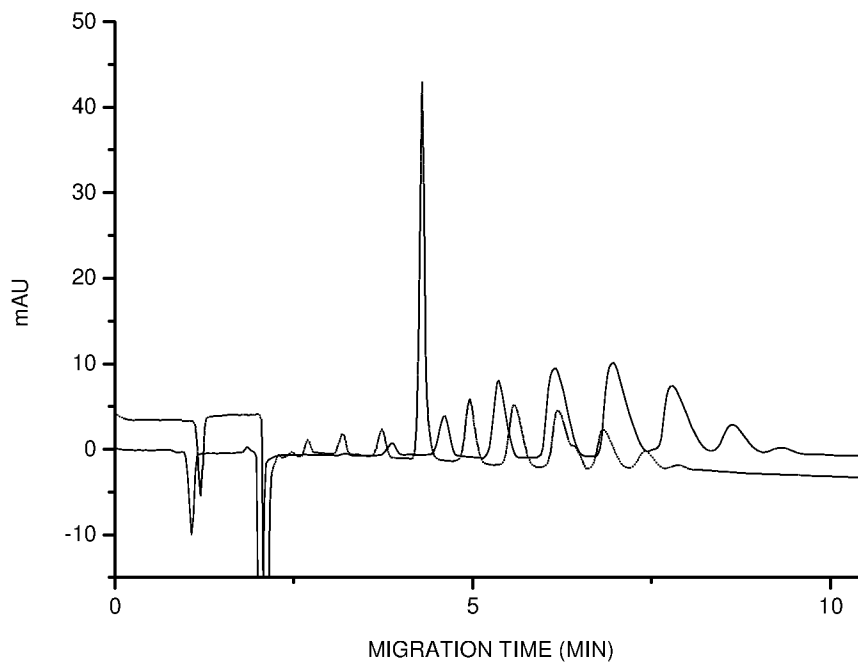
**Figure: 10**



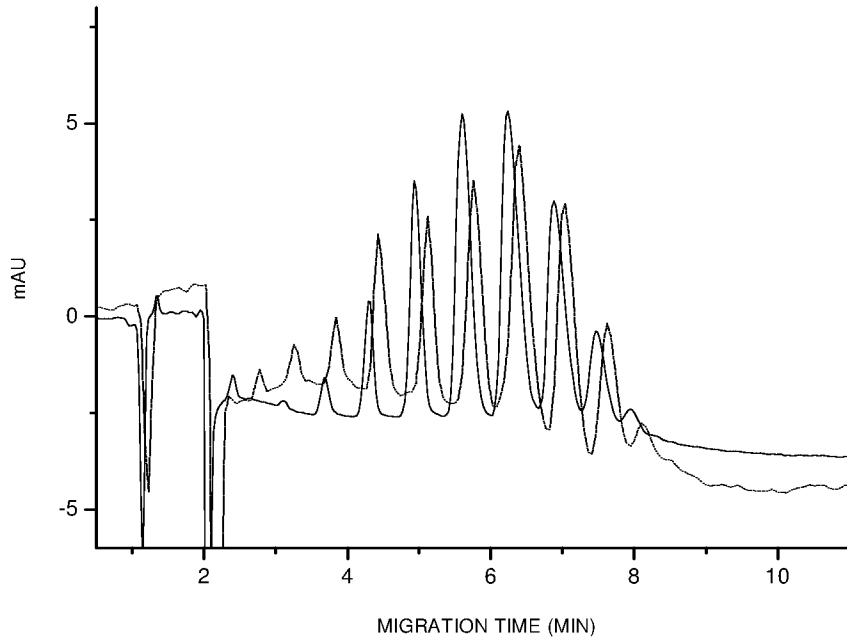
**Figure: 11**



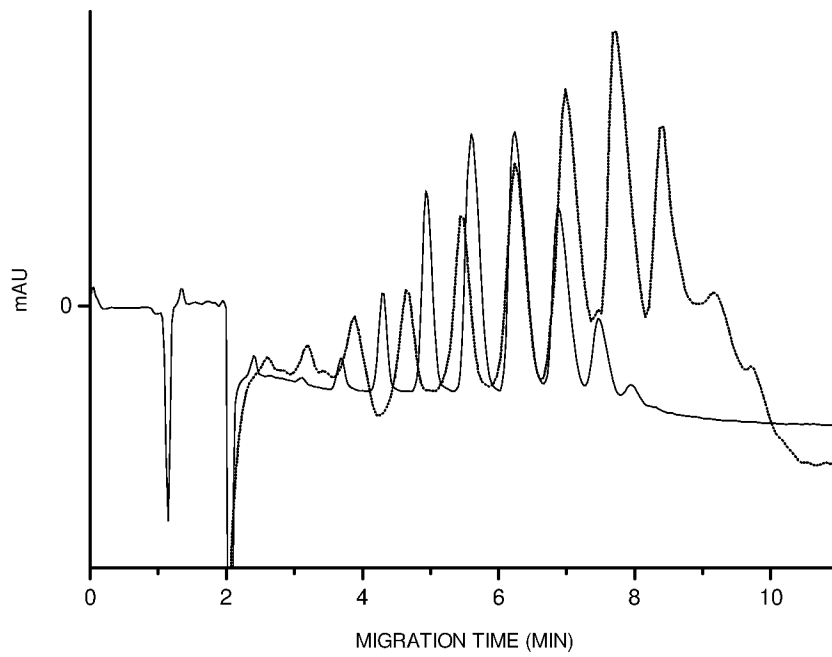
**Figure: 12**



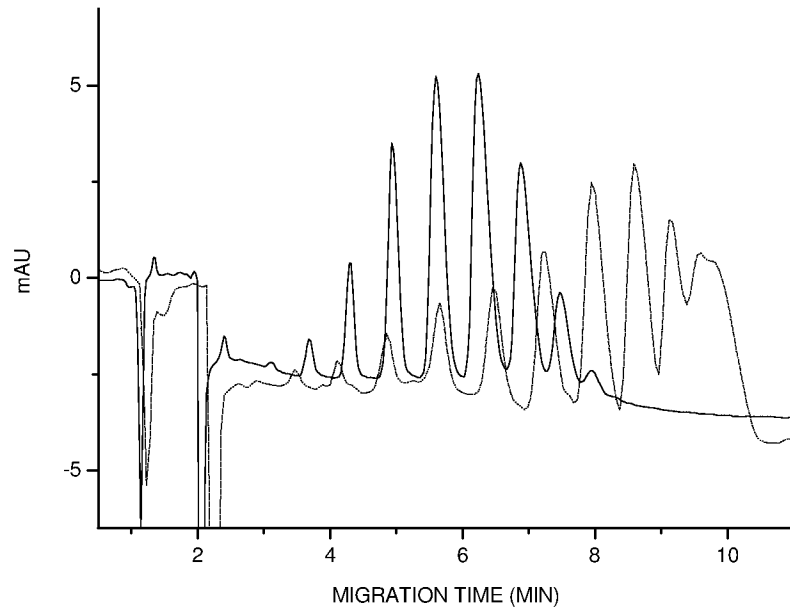
**Figure: 13**



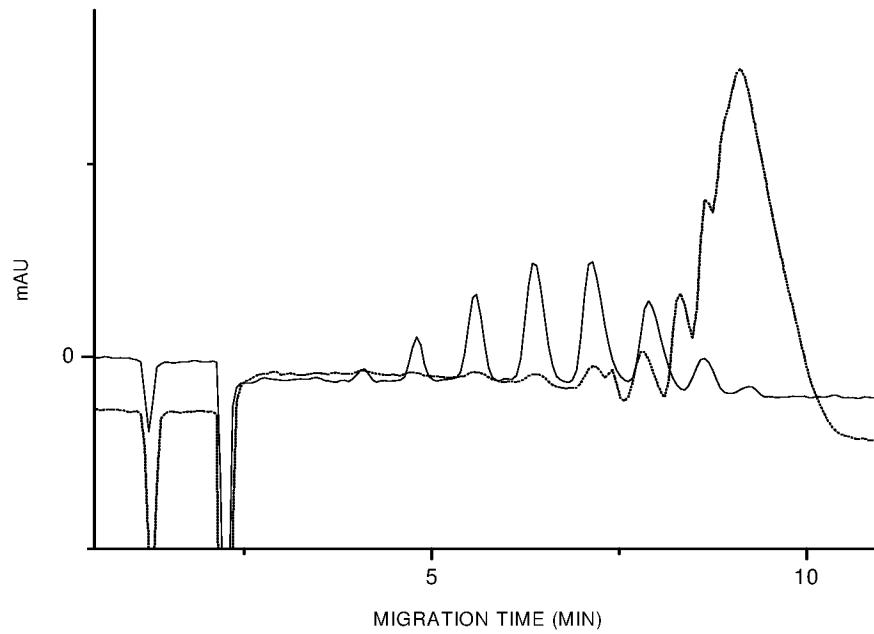
**Figure: 14**



**Figure: 15**



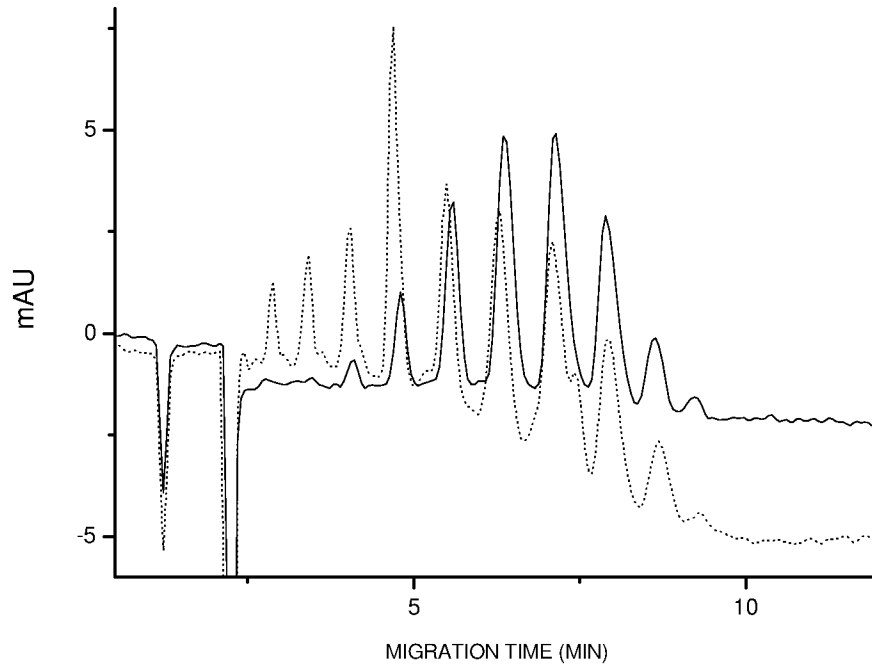
**Figure: 16**



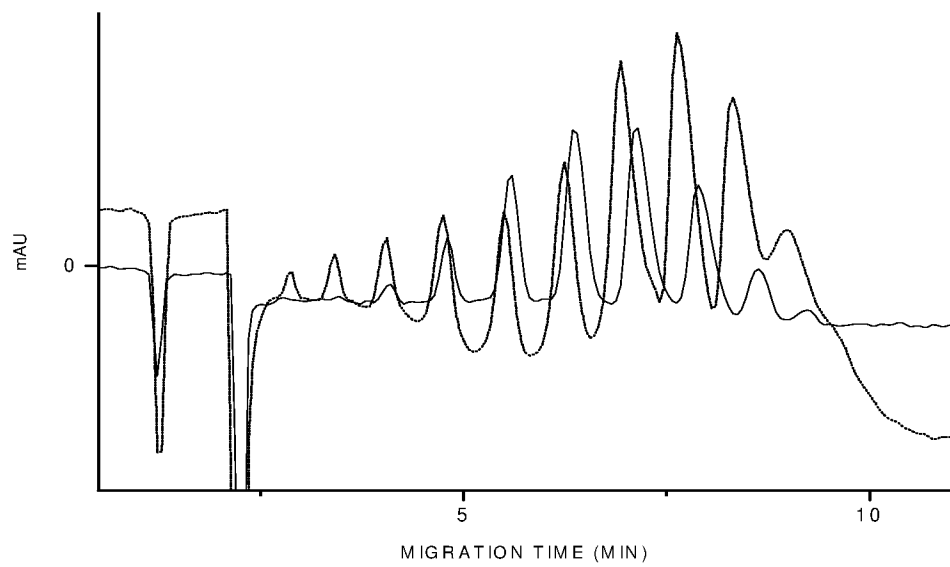


9/16

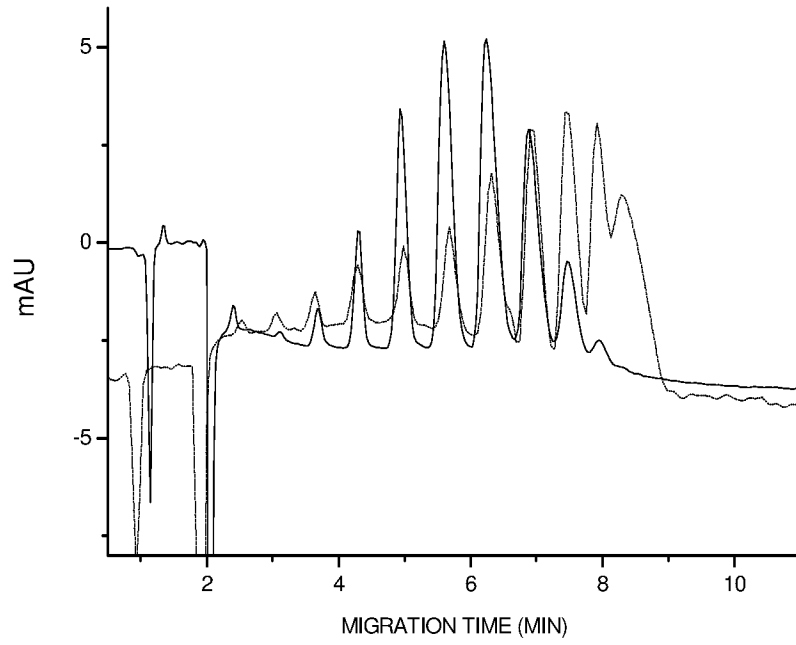
**Figure: 17**



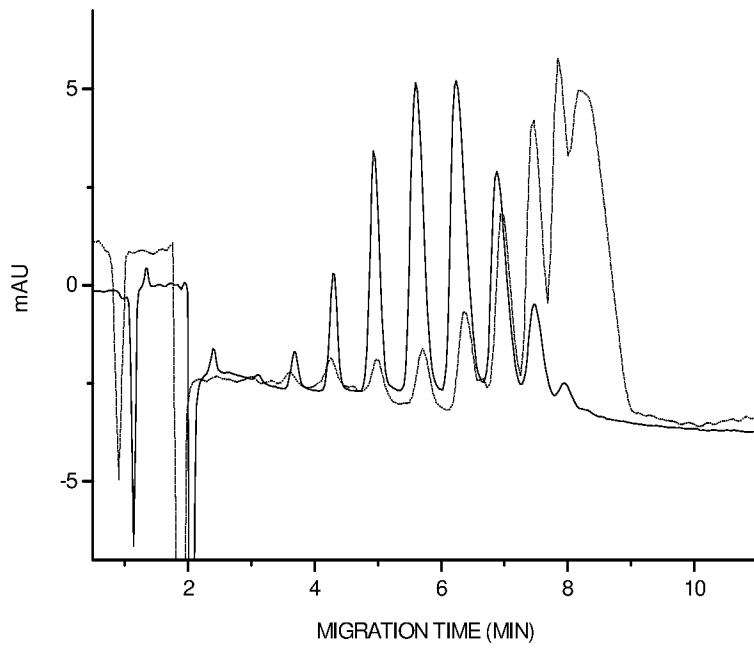
**Figure: 18**



**Figure: 19**



**Figure: 20**



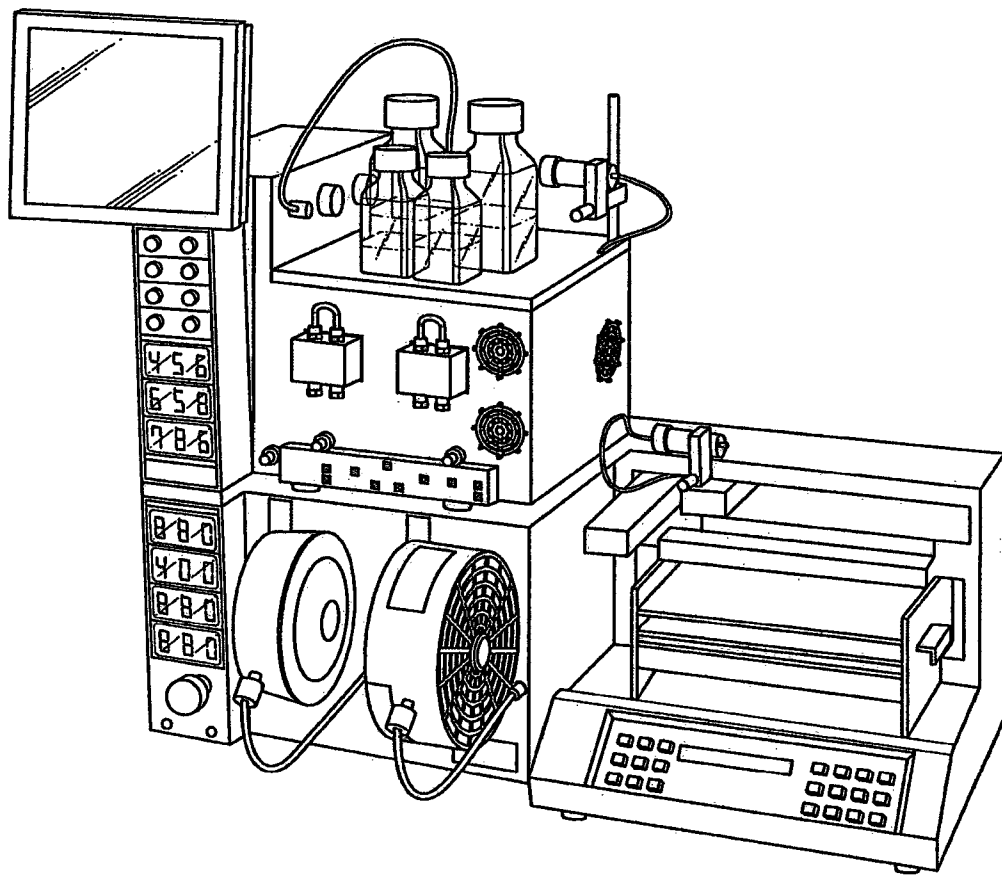
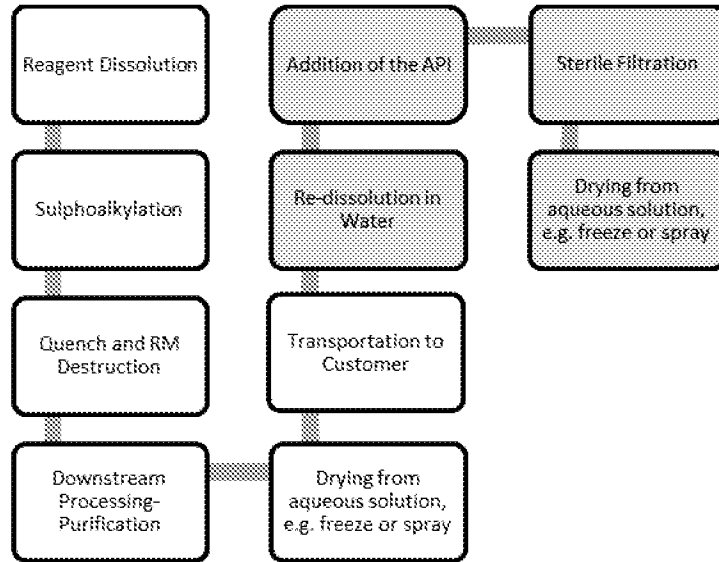


FIG. 21

**Figure: 22**



**Figure: 23**

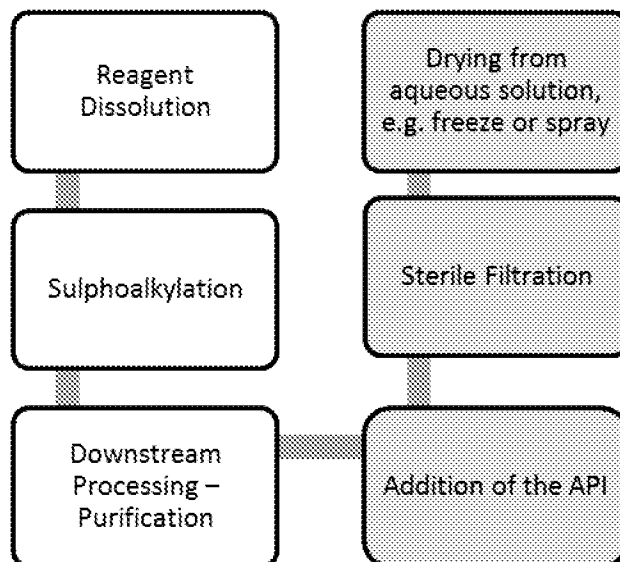


Figure: 24

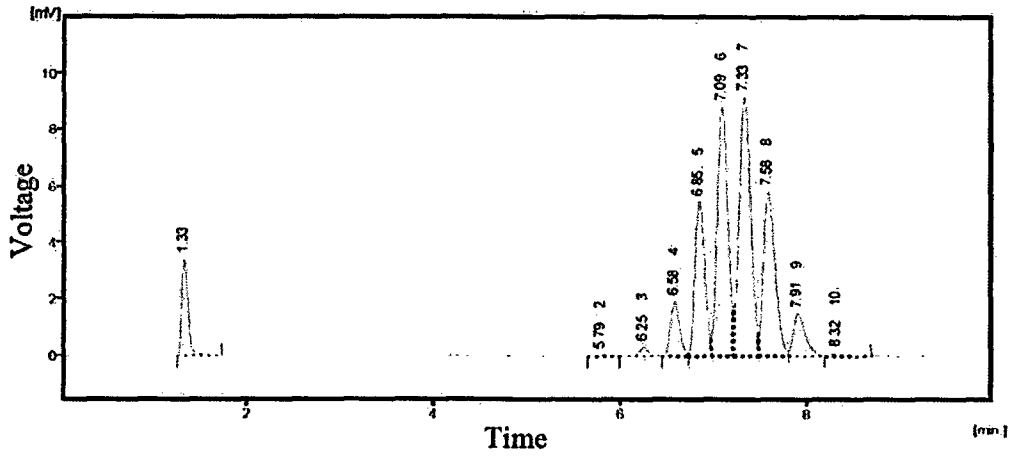
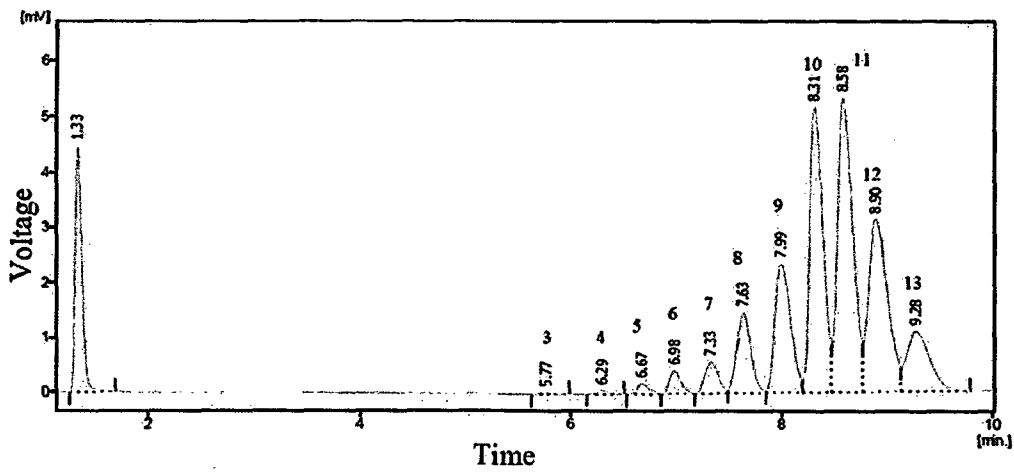


Figure: 25



**Figure: 26**

Butane sulfone to $\beta$ -cyclodextrin molar ratio	Sodium hydroxide to $\beta$ -cyclodextrin molar ratio	Sodium hydroxide deficit/excess relative to US 5,376,645 (Stella)	Average Degree of Substitution	IDS, present in US 6,153,746 (Shah, 2000) and not in the CSTR-produced SBECD	IDS, present in the CSTR-produced SBECD and not in US 6,153,746 (Shah, 2000)	Corresponding figure number
8:1	11:1					5
11:1	11:1					6
14:1	11:1					7
17:1	11:1					8
19:1	11:1					9
23:1	11:1					10
28:1	11:1					11
33:1	11:1					12
7:1	6:1	-50%	10.7	None	IDS <sub>11</sub> -IDS <sub>14</sub>	13
7:1	9:1	-25%	6.9	None	IDS <sub>1</sub> , IDS <sub>11</sub>	14
7:1	11:1	0%	8.7	None	IDS <sub>11</sub> - IDS <sub>13</sub>	15
7:1	14:1	+25%	12.1	IDS <sub>2</sub> - IDS <sub>6</sub>	IDS <sub>11</sub> -IDS <sub>14</sub>	16
10:1	6:1	-50%	6.0	None	None	17
10:1	9:1	-25%	6.8	None	IDS <sub>1</sub> , IDS <sub>11</sub>	18
10:1	11:1	0%	8.4	None	IDS <sub>1</sub> , IDS <sub>11</sub> , IDS <sub>12</sub>	19
10:1	14:1	+25%	10.4	IDS <sub>2</sub>	IDS <sub>11</sub> - IDS <sub>13</sub>	20

**Figure: 27**

IDS <sub>n</sub>	USP-NF peak area percentage limit	IDS <sub>n</sub> present in US 6,153,746 (Shah, 2000) by HPLC	Acceptance	IDS <sub>n</sub> present in the CSTR 10:1 butane sulfone:β-cyclodextrin molar ratio and a 6:1 Sodium hydroxide to β-cyclodextrin molar ratio	Acceptance
1	0-0.3	Not Detected	Accept	Not Detected	Accept
2	0-0.9	0.13	Accept	2.71	Reject
3	0.5-5.0	0.88	Accept	5.49	Reject
4	2.0-10.0	4.91	Accept	12.48	Reject
5	10.0-20.0	14.61	Accept	19.01	Accept
6	15.0-25.0	25.45	Reject	19.61	Accept
7	20.0-30.0	29.50	Accept	17.57	Reject
8	10.0-25.0	19.01	Accept	14.39	Accept
9	2.0-12.0	4.99	Accept	7.06	Accept
10	0-4.0	0.51	Accept	1.70	Accept

Figure: 28

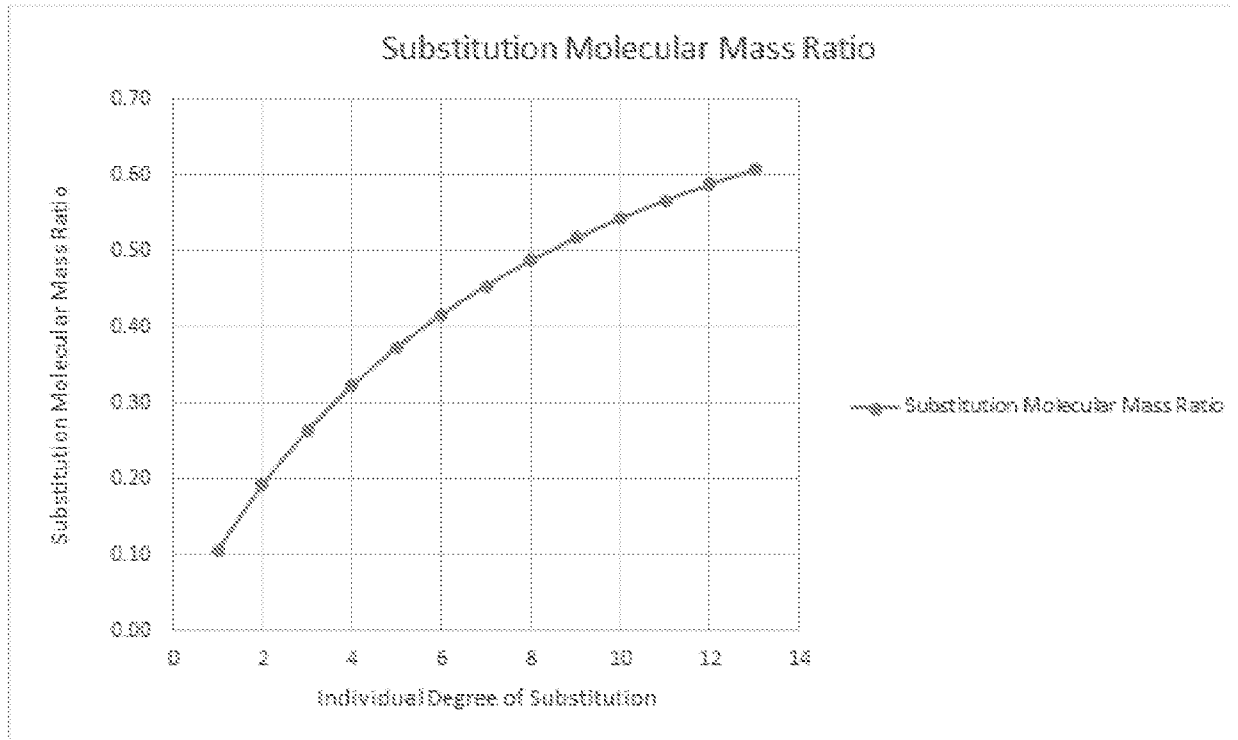
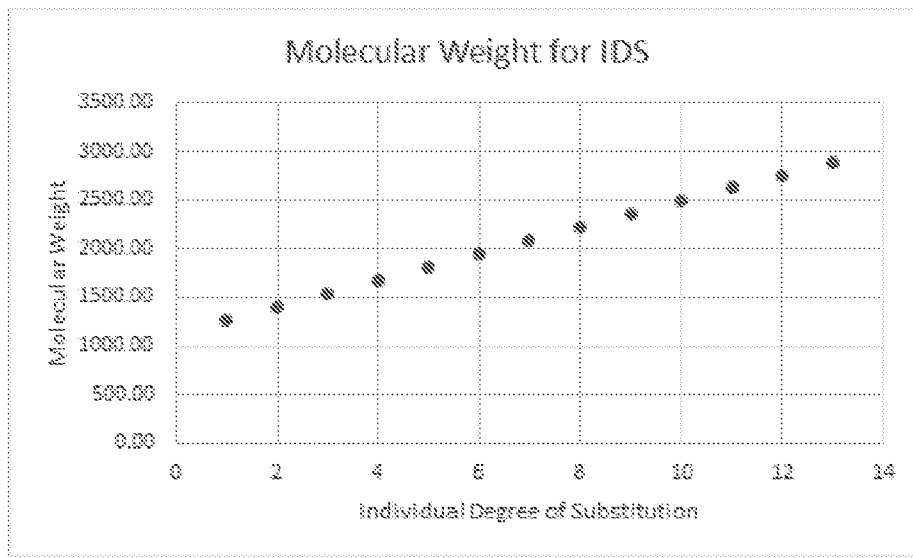


Figure: 29





INTERNATIONAL SEARCH REPORT

International application No  
PCT/GB2014/052173

A. CLASSIFICATION OF SUBJECT MATTER  
INV. C08B37/16 A61K47/40 A61K47/48  
ADD.  
According to International Patent Classification (IPC) or to both national classification and IPC

B. FIELDS SEARCHED  
Minimum documentation searched (classification system followed by classification symbols)  
C08B A61K  
Documentation searched other than minimum documentation to the extent that such documents are included in the fields searched

Electronic data base consulted during the international search (name of data base and, where practicable, search terms used)  
EPO-Internal, BIOSIS, EMBASE, MEDLINE, WPI Data

C. DOCUMENTS CONSIDERED TO BE RELEVANT		
Category*	Citation of document, with indication, where appropriate, of the relevant passages	Relevant to claim No.
X,P	WO 2013/123254 A1 (CYDEX PHARMACEUTICALS INC [US]; MATOS JOSE R [US]) 22 August 2013 (2013-08-22) claim 13; examples 1,3; table 7 -----	1-4, 6-18, 20-30
X	EP 1 950 227 A1 (UNIV NANJING NORMAL [CN]; NANJING JUHUAN CURATIVE SCIENC [CN] HAINAN H) 30 July 2008 (2008-07-30) claims 1-16; examples 1-16 -----	20-30
Y	US 2009/270348 A1 (ANTLE VINCENT [US]) 29 October 2009 (2009-10-29) examples 1-34 -----	1-19
X		20-30
Y		1-19
	----- -/--	

Further documents are listed in the continuation of Box C.  See patent family annex.

\* Special categories of cited documents :

<p>"A" document defining the general state of the art which is not considered to be of particular relevance</p> <p>"E" earlier application or patent but published on or after the international filing date</p> <p>"L" document which may throw doubts on priority claim(s) or which is cited to establish the publication date of another citation or other special reason (as specified)</p> <p>"O" document referring to an oral disclosure, use, exhibition or other means</p> <p>"P" document published prior to the international filing date but later than the priority date claimed</p>	<p>"T" later document published after the international filing date or priority date and not in conflict with the application but cited to understand the principle or theory underlying the invention</p> <p>"X" document of particular relevance; the claimed invention cannot be considered novel or cannot be considered to involve an inventive step when the document is taken alone</p> <p>"Y" document of particular relevance; the claimed invention cannot be considered to involve an inventive step when the document is combined with one or more other such documents, such combination being obvious to a person skilled in the art</p> <p>"&amp;" document member of the same patent family</p>
---	---

Date of the actual completion of the international search <b>24 September 2014</b>	Date of mailing of the international search report <b>07/10/2014</b>
---	---

Name and mailing address of the ISA/ European Patent Office, P.B. 5818 Patentlaan 2 NL - 2280 HV Rijswijk Tel. (+31-70) 340-2040, Fax: (+31-70) 340-3016	Authorized officer <b>Friedrich, Christof</b>
--	--

## INTERNATIONAL SEARCH REPORT

International application No  
PCT/GB2014/052173

C(Continuation). DOCUMENTS CONSIDERED TO BE RELEVANT		
Category*	Citation of document, with indication, where appropriate, of the relevant passages	Relevant to claim No.
Y	D. TYLER MCQUADE ET AL: "Applying Flow Chemistry: Methods, Materials, and Multistep Synthesis", THE JOURNAL OF ORGANIC CHEMISTRY, vol. 78, no. 13, 5 July 2013 (2013-07-05), pages 6384-6389, XP055142267, ISSN: 0022-3263, DOI: 10.1021/jo400583m the whole document -----	1-19

# INTERNATIONAL SEARCH REPORT

Information on patent family members

International application No PCT/GB2014/052173
---

Patent document cited in search report	Publication date	Patent family member(s)	Publication date
WO 2013123254	A1	22-08-2013	NONE
EP 1950227	A1	30-07-2008	CN 1800221 A 12-07-2006
			EP 1950227 A1 30-07-2008
			US 2009012042 A1 08-01-2009
			WO 2007051358 A1 10-05-2007
US 2009270348	A1	29-10-2009	AU 2009241858 A1 05-11-2009
			CA 2702603 A1 05-11-2009
			CA 2771879 A1 05-11-2009
			CN 101959508 A 26-01-2011
			EA 201000828 A1 31-10-2011
			EP 2268269 A2 05-01-2011
			JP 4923144 B2 25-04-2012
			JP 2010539193 A 16-12-2010
			JP 2012072160 A 12-04-2012
			KR 20110010742 A 07-02-2011
			NZ 589290 A 21-12-2012
			US 2009270348 A1 29-10-2009
			US 2010093663 A1 15-04-2010
			US 2013184357 A1 18-07-2013
			WO 2009134347 A2 05-11-2009