

<https://uk.sagepub.com/en-gb/eur/the-green-route-%E2%80%93-open-access-archiving-policy>

***"Once the article has been accepted for publication, you may post the accepted version (version 2) of the article on your own personal website, your department's website or the repository of your institution without any restrictions."***

***This is the accepted version of the following article: THE EPIDEMIOLOGY OF REGIONAL AND WIDESPREAD MUSCULOSKELETAL PAIN IN RURAL VERSUS URBAN SETTINGS IN THOSE ≥55 YEARS, which has been published by SAGE Journals in final form at <http://dx.doi.org/10.1177/2049463714527438>***

### ***THE EPIDEMIOLOGY OF REGIONAL AND WIDESPREAD MUSCULOSKELETAL PAIN IN RURAL VERSUS URBAN SETTINGS IN THOSE ≥55 YEARS***

Rachael E Docking<sup>1,21</sup> [r.docking@gre.ac.uk](mailto:r.docking@gre.ac.uk)  
Marcus Beasley<sup>1</sup> [m.beasley@abdn.ac.uk](mailto:m.beasley@abdn.ac.uk)  
Artur Steinerowski<sup>3</sup> [artur.steiner@sruc.ac.uk](mailto:artur.steiner@sruc.ac.uk)  
Elizabeth A Jones<sup>1</sup> [elizabeth.jones@abdn.ac.uk](mailto:elizabeth.jones@abdn.ac.uk)  
Jane Farmer<sup>4</sup> [j.farmer@latrobe.edu.au](mailto:j.farmer@latrobe.edu.au)  
Gary J Macfarlane<sup>1</sup> [g.j.macfarlane@abdn.ac.uk](mailto:g.j.macfarlane@abdn.ac.uk)  
Gareth T Jones<sup>1</sup> [gareth.jones@abdn.ac.uk](mailto:gareth.jones@abdn.ac.uk)

<sup>1</sup> Aberdeen Musculoskeletal Research Collaboration (Epidemiology Group), University of Aberdeen, Aberdeen, UK

<sup>2</sup> Health and Social Care, University of Greenwich, London, UK

<sup>3</sup> Rural Society Research Team, Scotland's Rural College, Edinburgh, UK

<sup>4</sup> La Trobe Rural Health School, La Trobe University, Bendigo, Victoria, Australia

*Corresponding author*

Dr Gareth T Jones

Epidemiology Group, Institute of Applied Health Sciences,  
School of Medicine and Dentistry, University of Aberdeen  
Polwarth Building, Foresterhill, Aberdeen, AB25 2ZD

Tel: 01224 437 143 (secretary)

E-mail: [gareth.jones@abdn.ac.uk](mailto:gareth.jones@abdn.ac.uk)

---

<sup>1</sup> Although the work was undertaken at the University of Aberdeen, RED is currently employed at the University of Greenwich, UK

*Abbreviations*

O4O – Older People for Older People study

CWP – Chronic Widespread Pain

*Key words*

Pain; Rural; Urban; Chronic widespread pain; Epidemiology

**ABSTRACT**

*Objectives*

To examine whether the prevalence of regional and chronic widespread pain (CWP) varies with rurality, and to determine the characteristics of persons in rural locations in whom pain is found to be in excess.

*Methods*

Participants, aged  $\geq 55$  years from participating general practices in seven different geographical locations in Scotland were sent a postal questionnaire. The one-month prevalence of ten regional pain conditions plus CWP was identified using body manikins. Differences in the prevalence of pain with differing rurality were examined using Chi<sup>2</sup> test for trend. Thereafter, among the rural population, the relationships between pain and putative risk factors were examined using Poisson regression. Thus, results are described as risk ratios.

*Results*

There was some evidence to suggest that the prevalence of CWP increased with increasing rurality, although the magnitude of this was slight. No large nor significant differences were observed with any regional pain conditions. Factors associated with the reporting of CWP included poor general health, feeling downhearted most of the time, and selected measures of social contact. Factors independently associated with CWP included: female gender (1.24; 0.997-1.55), poor self-rated health (3.50; 1.92-6.39), and low mood (1.54; 1.07-2.20). Also, having fewer than ten people to turn to in a crisis was associated with a decrease in the risk of CWP: 0.68 (0.50-0.93) and 0.78 (0.60-1.02) for those with 5-10 and <5 people, respectively.

### *Conclusions*

There is no difference in the prevalence of regional musculoskeletal pain is increased in rural settings, although this study provides some evidence of a modest increase in CWP. Risk factors for CWP are similar to those seen in the urban setting, including markers of general health, mental health, and also aspects of social contact. It may be, however, that social networks are more difficult to maintain in rural settings and clinicians should be aware of the negative effect of perceived social isolation on pain in rural areas.

## **INTRODUCTION**

Musculoskeletal pain is common, particularly in the low back, hip, knee and shoulder [1], and it is associated with considerable disability, healthcare and societal costs [2]. Estimates vary, but for low back pain, the most common regional pain condition, one-year prevalence has been estimated to be approximately 30-40% while lifetime prevalence is 65-70% [3]. Further, population studies consistently show the prevalence of chronic widespread pain (CWP; the cardinal feature of fibromyalgia) to be around 12% [1].

The majority of epidemiological studies of pain have considered urban or sub-urban populations with few studies in communities that are rural (small population size) or remote (distant from large towns) [4]. Although definitions vary, the Scottish Government defines 'accessible rural' areas as those with fewer than 3,000 people and within 30 minutes' drive of a settlement of 10,000 or more; and 'remote rural' areas as settlements of <3,000 people and with a drive time of >30 minutes to a settlement of 10,000 or more [5]. Some authors have described elevated levels of chronic pain in a rural Swedish population [6] and in a rural area of the United States, compared to an urban area [4]. However, there were no significant differences in prevalence between individual pain sites. Others have demonstrated a high pain prevalence in a Canadian sample that included a disproportionately high number of rural participants [7]. However, work in this area is limited: sample sizes and response rates are low [4; 7] and, although samples are described as rural, it is not always clear how this is actually defined [6].

The essential difference between rural and urban populations, in terms of healthcare, is the relative accessibility of services, but there may also be differences with regard to aetiology. Risk factors for pain in the general population include female gender, poor psychological well-being, and lower social class, occupational and psychosocial factors [1-3; 8; 9]. While there are no real reasons to believe that a different set of risk factors will be important in rural areas, the relative importance of risk factors may differ. For example: studies have found that in those with chronic pain higher quality of life is related to lower social

constraints, suggesting benefits of strong social support networks [4], and it may be that these are easier to maintain in urban rather than rural communities. Also, generally speaking, rural populations are older, have higher levels of manual labour (and individuals remain in physical occupations later in life [10]), and higher levels of social isolation, with the dispersal of social groupings leading to distinct social interaction effects [10]. Further, some authors have suggested that individuals living in socially isolated environments are more likely to focus attention inward, and are at increased risk of reporting physical symptoms [11].

The aim of the current study was to examine the epidemiology of regional and widespread pain in rural versus urban settings. In particular, we aimed firstly: to compare prevalence of regional and widespread pain in areas of different rurality; and, secondly, to determine the characteristics of persons in rural locations in whom pain is found to be in excess.

## ***METHODS***

The current study took advantage of two population surveys ongoing at a similar time, in different geographical areas. All persons aged  $\geq 55$  years on the registers of nine participating general practices were sent a questionnaire by post to collect data on pain, general health and wellbeing. Over 96% of persons resident in the United Kingdom are registered with a General Practice therefore this represents a suitable population sampling frame for epidemiological studies. Non-respondents were sent a further questionnaire after two weeks.

### *Rural sample*

The rural sample came from practices participating in the Older People for Older People (O4O) study [12]. Funded by the EU Northern Periphery Programme (2007-2010), the O4O study aimed to improve services delivered to the population living in remote and rural areas, working with communities in Scotland, Finland, Sweden, Greenland and Northern Ireland ([www.o4os.eu](http://www.o4os.eu)). Only practices from Scotland were selected for the current study and the sample comprised six rural communities within the Scottish Highlands – an area of low population density, with fewer than 100 people per square kilometre. These rural areas were also fairly remote, with an average drive time to a large community (>10,000 individuals) of >90mins.

### *Urban sample*

The urban sample came from three practices participating in the MUSICIAN study. The MUSICIAN study was a 2x2 factorial randomised controlled trial investigating the management of CWP [13; 14]. However, for the current study, participants comprised the respondents to a large-scale postal survey that was used to identify persons eligible for the trial. Only practices in Aberdeen were selected for the current study. The city of Aberdeen in the north-east coast of Scotland has a population of 250,000 and is a relatively affluent city with high employment, particularly in the fields of oil and higher education.

## Questionnaires

Study questionnaires gathered information on demographics (age; gender; location; employment), and pain was assessed by asking the participants: "Thinking back over the past month, have you had any aches or pains that have lasted for one day or longer?" Participants answering positively were asked to shade the location(s) of their pain on a four-view body manikin; this was coded into regional areas as per Figure 1 allowing the identification of the following regional pain conditions: shoulder pain; elbow pain; forearm pain; hand pain; low back pain; hip pain; knee pain; foot pain and headache. In addition, CWP was also identified, defined according to the 1990 American College of Rheumatology criteria for fibromyalgia i.e. pain lasting more than three months, on both sides of the body, above and below the waist, and axial pain [15].

<<Figure 1 here>>

Rural study participants were also asked about a number of putative risk markers for pain, including self-rated health and information on psychosocial (feeling calm; feeling downhearted) and social factors (knowing or trusting neighbours, attendance / participation at community projects and local groups; recently speaking to or seeing friends, neighbours and family; people to turn to in a crisis). A composite index of social contact was created using the number of times participants *saw* their friends, neighbours and relatives, and a separate index for number of times participants *spoke* to friends, neighbours and relatives. Each was then divided into quartiles for analysis.

## Analysis

Differences in the prevalence of pain across differing levels of rurality (i.e. areas of decreasing population size), compared to the urban population, were examined using the Chi<sup>2</sup> test for trend. Thereafter, for pain

conditions shown to be in excess in rural areas, the relationship between pain and potential risk markers was examined using Poisson regression. Thus, results are presented as risk ratios with 95% confidence intervals, the latter being derived using robust estimates of standard error [16]. Estimates from univariate analyses were initially adjusted for age, sex and geographical location, then used to build a multivariable model in which variables were offered to the model if the adjusted risk ratio was  $\geq 1.25$  (or its reciprocal,  $\leq 0.8$ ) or if it was significant at  $p \leq 0.2$ . These criteria were applied for dichotomous variables, or for any category of categorical variables, and ensured that all potential confounding factors of even marginal significance were at least considered for the final model. The final multivariable model used forward Poisson regression, with variables included at  $p \leq 0.10$  and eliminated at  $p \geq 0.15$ . Factors which were likely to be consequences of pain as opposed to potential risk markers (e.g. pain interference with social life) were not considered for multivariable analysis. All analysis was conducted using Stata v12.1 (StataCorp LP, College Station, Texas).



## **RESULTS**

### *Demographic characteristics of the study sample*

In total, questionnaires were sent to 12,831 people. From rural areas 1374 / 2462 responded and provided complete data on pain (56%), and 4639 / 10,369 from urban areas (45%). The characteristics of both study populations are detailed in Table 1.

<<Table 1 here>>

### *Prevalence of regional and widespread pain*

The prevalence of pain in rural and urban areas was 64.6% and 65.8% and respectively. There was no difference in the overall pain prevalence ('any pain') with increasing rurality across the seven sites ( $\text{Chi}^2_{\text{trend}}$ : 1.35;  $p=0.25$ ). The most common regional pain conditions in both populations were hip pain (35%), knee pain (29%) low back pain (28%), and shoulder pain (27%). Figure 2 shows the prevalence of all pain conditions by increasing rurality and, further, provides a  $\text{Chi}^2$  test for trend to investigate significant differences in pain prevalence. Only for CWP was there a significant trend in the prevalence of pain with increasing rurality ( $\text{Chi}^2_{\text{trend}}$ : 6.70;  $p=0.009$ ). However, the magnitude of the difference in prevalence across categories was relatively small (17.4% in the urban sample, versus 22.2% in the most rural sample).

<<Figure 2 here>>

### *Risk markers for CWP in the rural population*

The prevalence of CWP in the rural population as a whole was 21.0%. Women were significantly more likely to report CWP than men (risk ratio: 1.30; 95%CI: 1.05-1.60). Persons who were retired were more likely to report CWP (1.54; 1.12-2.11) although there was no clear association with age (Table 2).

<<Table 2 here>>

A dose-risk relationship was found between self-rated health and CWP (Table 3), those reporting poor self-rated health were five times more likely also to report CWP (4.99; 2.83-8.81) compared to those in excellent health. Participants who knew (1.50; 1.15-1.95) or trusted (1.40; 1.08-1.81) few or none of their neighbours were more likely to report CWP. There was also some evidence that those who rarely saw friends, family or neighbours were at increased risk (1.33; 0.98-1.81). Interestingly, however, individuals living in two-person (0.60; 0.45-0.80) or single person households (0.78; 0.56-1.08) were less likely to report CWP than those living in households of more than two people.

Those reporting low mood – as indicated by feeling downhearted – experienced a significantly elevated risk of CWP (2.27; 1.61-3.20). The same was true of those who reported that they rarely felt calm (2.98; 1.98-4.45).

Contrary to what one might expect, compared to participants who reported that they have more than ten people they could turn to in a crisis, those with fewer confidants reported a reduction in the risk of CWP (0.72; 0.52-0.99 and 0.89; 0.67-1.18 for those with 5-10 and <5 people, respectively).

<<Table 3 here>>

### *Multivariable analysis*

Three factors emerged as independent risk markers for CWP: poor self-rated health, low mood, and the number of people one is able to turn to in a crisis (Table 4). Although forced into the model (and therefore not subject to the stepwise variable selection criteria) female gender was also significantly associated with the reporting of CWP.

<<Table 4 here>>

## **DISCUSSION**

We have demonstrated that, for the main part, the prevalence of pain is similar in urban / rural communities. However, we provide some evidence to suggest that CWP occurs in excess in rural populations. Further, we have shown that, in a rural population, individuals with poor self-rated health, low mood, and who know few of their neighbours, or who rarely see friends / family / neighbours are at increased risk of CWP.

A number of methodological issues must be considered when interpreting these findings. Firstly, the response rate for the rural and urban populations was 56% and 45%, respectively, and non-response bias is a potential concern. Age and sex are known markers of participation, with non-responders more likely to be male and younger. No data is available on non-responders in the rural sample due to restrictions on access to non-respondent data, although in the current study, the distribution of gender (45.1% male) was exactly what would be expected in a Scottish sample of this age group (45.3% male) [17] suggesting no differential response by gender. Also, because the whole sample was  $\geq 55$  years, any effect across age will be greatly reduced, although pain is known to increase with age [1] and this may have influenced prevalence estimates. However, were the increased prevalence of CWP with increasing rurality due to non-response bias, one would also expect an increased prevalence of all pain(s), and this was not observed.

Secondly, there is the possibility of duplicates in the rural dataset. Due to requirements of the ethical approval for the O4O study, questionnaire respondents were not identifiable and, thus, reminders were sent to all sampled persons, rather than solely to non-responders. This ensured participation remained anonymous although, technically, it was possible for some people to respond twice (although they were asked not to). Potential duplicates were identified on SPSS (PASW Statistics Release Version 18.0.0) by comparing variables unlikely to change between mailings, such as age; gender; employment status; qualifications; income; number of people in household; etc. This identified 69 potential duplicates, which were removed from further analyses. It is possible, therefore, that some participants may have erroneously been excluded, and / or some individuals included twice. Two sensitivity analyses were

concluded: firstly, pain prevalence was estimated in the entire dataset (i.e. potential duplicates included); and secondly, we estimated the prevalence of all pain conditions using bootstrap methodology. One thousand estimates of prevalence were computed (for each pain condition) each time removing a random sample of 69 individuals in order to match the original 'duplicate' numbers. Both approaches resulted in estimates of pain prevalence almost identical to those of the main study. We believe, therefore, that our findings have not been biased to any great extent by the restrictions placed on the administration of the study.

Thirdly, the cross-sectional nature of the analysis prevents us from establishing temporality, and in drawing conclusions one must be wary of reverse causality. It is unlikely that CWP leads to rurality. However, stronger effects are observed with the perception of social contact and community rather than any objective markers of this, and it may be that pain influences one's perception of these relationships and that these are in fact consequences of pain, rather than antecedents of it. The current study is unable to tease apart these issues and it is crucial, therefore, that future work should examine these relationships longitudinally.

Additionally, we made eleven comparisons of pain prevalence by rurality (any pain; nine regional pains; and CWP) and only in the latter was a significant association observed. We cannot rule out the possibility that the single association with CWP may have arisen by chance. However, although the magnitude of effect was not large, the relationship between rurality and CWP was far from statistically borderline, at  $p=0.009$ . In other words, the probability of observing the trend we see in the data if, in reality, the null hypothesis is true (i.e. that there is no association), is less than 1%. A final point to be considered is the fact that our population sample was limited to those >55 years, therefore, while we can make conclusions based on that cohort, it is possible that results may differ in younger age-groups. We do not have the data to assess these potential differences and therefore recommend future research with a younger population sample.

Previous work examining rural populations have reported low response rates (25%) and, often, no definition of rurality is given [4; 6; 11]. The current study is the first, to our knowledge, to examine the epidemiology of pain across several rural communities while also directly comparing pain prevalence to a contemporary urban population. The prevalence of rural regional pain reported here is consistent with urban populations<sup>17</sup> and the finding that low back, knee, shoulder and hip pain are the most common regional pains across both populations is in line with literature in urban populations [1; 4; 18]. Historically, urban population estimates of CWP have been fairly consistent ranging between 11-14% [1]. However, a more recent study in the UK reported prevalence of 23% [19], in an urban sample. This recent evidence and the current CWP prevalence reported for the urban and rural sample (17% and 21% respectively) may reflect a shift over time with increasing CWP, or it may be that previous literature has underestimated its burden.

The current study only investigated the aetiology of those pain conditions which were found to increase significantly with increasing rurality. The approach was chosen to guard against the effects of multiple testing. However, for comparison, additional analysis (not shown) was conducted to determine the factors associated with regional pain conditions and risk markers were broadly similar to those identified for CWP. In general, the risk factors for CWP in the current study were very similar to those previously reported for CWP in urban populations [1]. Further, the current findings suggest that, in a rural population, individuals who know few of their neighbours, or who rarely see friends / family / neighbours are at increased risk of CWP. This, again, is consistent with other studies that have shown that a better sense of neighbourhood is associated with better physical and mental health, lower stress, better social support and being physically active [20].

We have previously shown in older adults living in an urban setting that perceived loneliness is a risk factor for musculoskeletal pain [21]. Our findings also provide support for Pennebaker who claimed that those who live in socially isolated environments may be at greater risk of reporting physical symptoms due to a lack of external distractions [11] and it is certainly conceivable that the benefits of social networks may be

harder to realise in remote and rural communities. In addition, geographical isolation may also limit access to treatments, and without support from neighbours, older rural residents may have greater difficulty reaching health / social care. While our results suggest that individuals are at increased risk of CWP if they are isolated, we must consider that these self-reported issues are difficult to separate from symptoms such as anxiety and social phobia, which are collectively known to influence self-reported chronic pain. Therefore, we must consider that it may not necessarily be rurality or feeling alone which impacts on CWP, but predisposing feelings of anxiety.

An intriguing observation was that participants who reported fewer than 10 people to whom they could turn in a crisis experienced a decrease in the likelihood of CWP. Initially counter-intuitive, one can only speculate on the mechanism underpinning this association. However, it may be that these relationships are bi-directional and the more people you have to turn to, the more that may turn to you, and that this is in some way detrimental. Or, it may be that it is the perception of the quality of these relationships that is important rather than the quantity.

### *Conclusions*

Hitherto, there has been little research looking at the epidemiology of pain in rural communities and there are no previous direct comparisons of pain prevalence in rural versus urban populations. We have shown that, while the prevalence of regional pain conditions is similar, there is some evidence that CWP occurs more commonly in increasingly rural areas, although the magnitude of this increase is not large. Our findings need to be corroborated with longitudinal investigations, we have demonstrated that while a number of aspects of the aetiology of CWP in rural populations are similar to those reported in urban settings, not all objective measures of social contact are associated with pain prevalence. However, there is a negative effect of perceived social isolation. Those who know / trust their neighbours are less likely to report CWP, providing evidence not only for the benefit of a strong neighbourhood community, but also stressing the importance of the perceived quality of these relationships. While this is important for the

maintenance of musculoskeletal health generally, it is of particular importance in rural areas where individuals are more likely to be physically and socially isolated.



### **Key points**

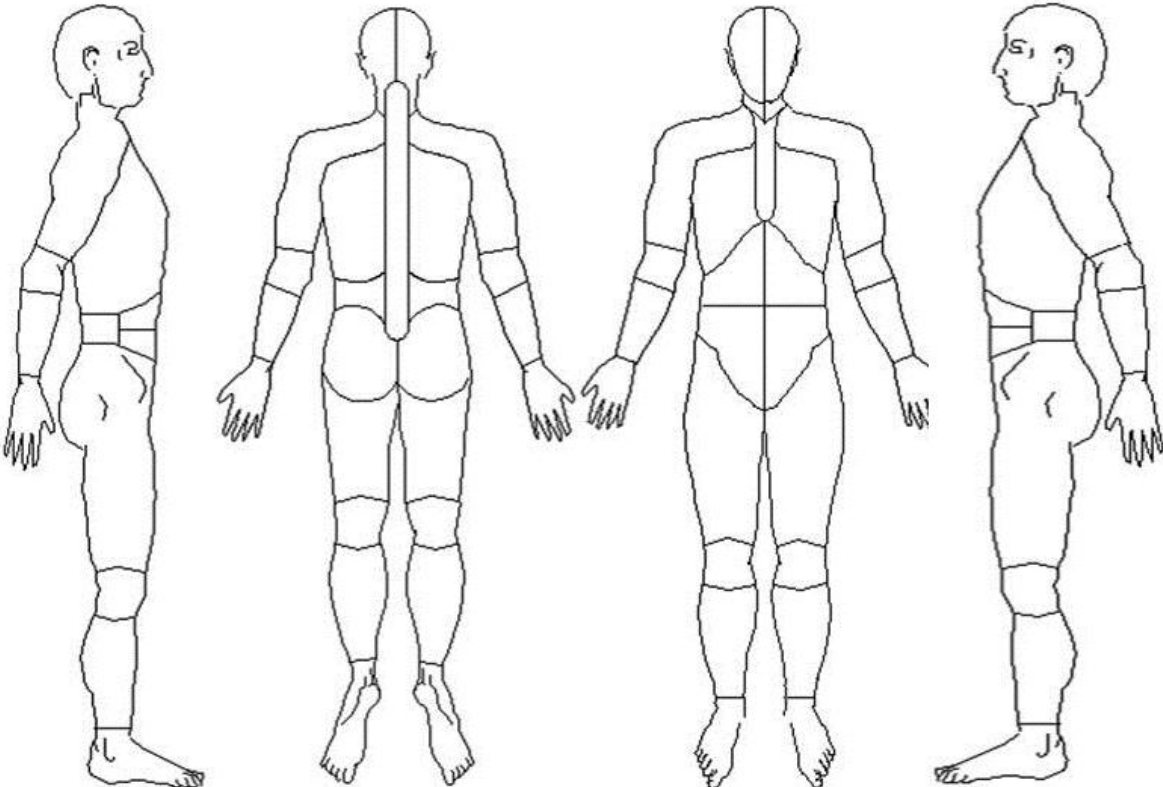
- Some evidence to suggest that the prevalence of chronic widespread pain increased with increasing rurality
- Risk factors for chronic widespread pain are similar to those seen in the urban setting, including markers of general health, mental health, and also aspects of social contact
- In rural areas, individuals who know few of their neighbours, or who rarely see friends / family / neighbours are at increased risk of CWP

### **REFERENCES**

- (1) Macfarlane GJ, Jones GT, McBeth J. Epidemiology of pain. In: McMahon SB, Koltzenburg M, editors. Wall and Melzack's Textbook of Pain. 5th ed. Churchill Livingstone; 2006. 1199-1214.
- (2) van Tulder MW, Koes B, Bombardier C. Low back pain. *Best Pract Res Clin Rheumatol* 2002; 16(5):761-775.
- (3) Papageorgiou AC, Croft PR, Ferry S et al. Estimating the prevalence of low back pain in the general population. Evidence from the South Manchester Back Pain Survey. *Spine* 1995; 20(17):1889-1894.
- (4) Hoffman PK, Meier BP, Council JR. A comparison of chronic pain between an urban and rural population. *Journal of Community Health Nursing* 1919;(4):213-224.
- (5) Scottish Government.
- (6) Andersson HI. The epidemiology of chronic pain in a Swedish rural area. *Qual Life Res* 1994; 3(Supp 1):S19-S26.
- (7) Tripp DA, VanDenKerkhof EG, McAlister M. Prevalence and determinants of pain and pain-related disability in urban and rural settings in south-eastern Ontario. *Pain Research and Management* 2006; 11(4):225-233.
- (8) Walsh K, Cruddas M, Coggon D. Low back pain in eight areas of Britain. *J Epidemiol Community Health* 1992; 46(3):227-230.
- (9) Andersson GB. Epidemiological features of chronic low-back pain. *Lancet* 1999; 354:581-585.
- (10) Joshi VL, Chopra A. Is there an urban-rural divide? Population surveys of rheumatic musculoskeletal disorders in the Pune region of India using the COPCORD Bhigwan model. *J Rheumatol* 2009; 36(3):614-622.
- (11) Pennebaker JW. Psychological factors influencing the reporting of physical symptoms. In: Stone AA, Turkkan JS, Bachrach CA, Jobe JB, Kurtzman HS, Cain VS, editors. The science of self-report: implications for research and practice. Mahwah, NJ: Erlbaum Publishers; 1999. 299-316.

- (12) Farmer J, Bradley S. Measuring the value of social organisations as service providers. In: Farmer J, Hill C, Munoz S-A, editors. *Community co-production: social enterprise in remote and rural communities*. Northampton, MA: Edward Elgar Publishing Inc; 2012. 133-158.
- (13) McBeth J, Prescott G, Scotland G et al. Cognitive behavior therapy, exercise, or both for treating chronic widespread pain. *Arch Intern Med* 2012; 172(1):48-57.
- (14) Macfarlane GJ, Beasley M, Jones EA et al. The prevalence and management of low back pain across adulthood: results from a population-based cross-sectional study (the MUSICIAN study). *Pain* 2012; 153(1):27-32.
- (15) Wolfe F, Smythe HA, Yunus MB et al. The American College of Rheumatology 1990 Criteria for the Classification of Fibromyalgia. Report of the Multicenter Criteria Committee. *Arthritis Rheum* 1990; 33(2):160-172.
- (16) Greenland S. Model-based estimation of relative risks and other epidemiologic measures in studies of common outcomes and in case-control studies. *Am J Epidemiol* 2004; 160(4):301-305.
- (17) Office of the Chief Statistician SG. Mid-2010 population estimates Scotland: population estimates by sex, age and administrative area. 2011.  
Ref Type: Online Source
- (18) Hunt IM, Silman AJ, Benjamin S et al. The prevalence and associated features of chronic widespread pain in the community using the 'Manchester' definition of chronic widespread pain. *Rheumatology (Oxford)* 1999; 38(3):275-279.
- (19) Nicholl BI, Macfarlane GJ, Davies KA et al. Premorbid psychosocial factors are associated with poor health-related quality of life in subjects with new onset of chronic widespread pain - results from the EPIFUND study. *Pain* 2009; 141(1-2):119-126.
- (20) Young AF, Russell A, Powers JR. The sense of belonging to a neighbourhood: can it be measured and is it related to health and well being in older women? *Soc Sci Med* 2004; 59(12):2627-2637.
- (21) Docking RE, Fleming J, Brayne C et al. Epidemiology of back pain in older adults: prevalence and risk factors for back pain onset. *Rheumatology (Oxford)* 2011; 50(9):1645-1653.

**Figure 1 – Manikin indicating regional pain areas**



**Table 1 – Characteristics of study populations**

		<b>Rural*</b> <b>n (%)</b>	<b>Urban*</b> <b>n (%)</b>
Age	55-64yrs	620 (45.5%)	1890 (40.7%)
	65-74yrs	408 (29.9%)	1479 (31.9%)
	75-84yrs	270 (19.8%)	1019 (22.0%)
	>84yrs	66 (4.8%)	251 (5.4%)
Sex	Male	630 (46.3%)	2073 (44.7%)
	Female	731 (53.7%)	2566 (55.3%)
Employment	Full-time	264 (19.6%)	895 (19.7%)
	Part-time	153 (11.3%)	471 (10.4%)
	Retired	900 (66.7%)	2704 (59.5%)
	Unemployed	32 (2.4%)	11 (0.2%)
	Unable to work**	–	193 (4.2%)
	Other**	–	273 (6.0%)
Location***	Urban	–	4639 (100%)
	Ardersier (1000;23mins)	560 (40.8%)	–
	Tongue (1000;123mins)	130 (9.5%)	–
	Lochcarron (950;87mins)	260 (18.9%)	–
	Lochinver (600;122mins)	230 (16.7%)	–
	Torridon (400;88mins)	131 (9.5%)	–
	Applecross (250;118mins)	63 (4.6%)	–

\* Numbers vary due to missing data.

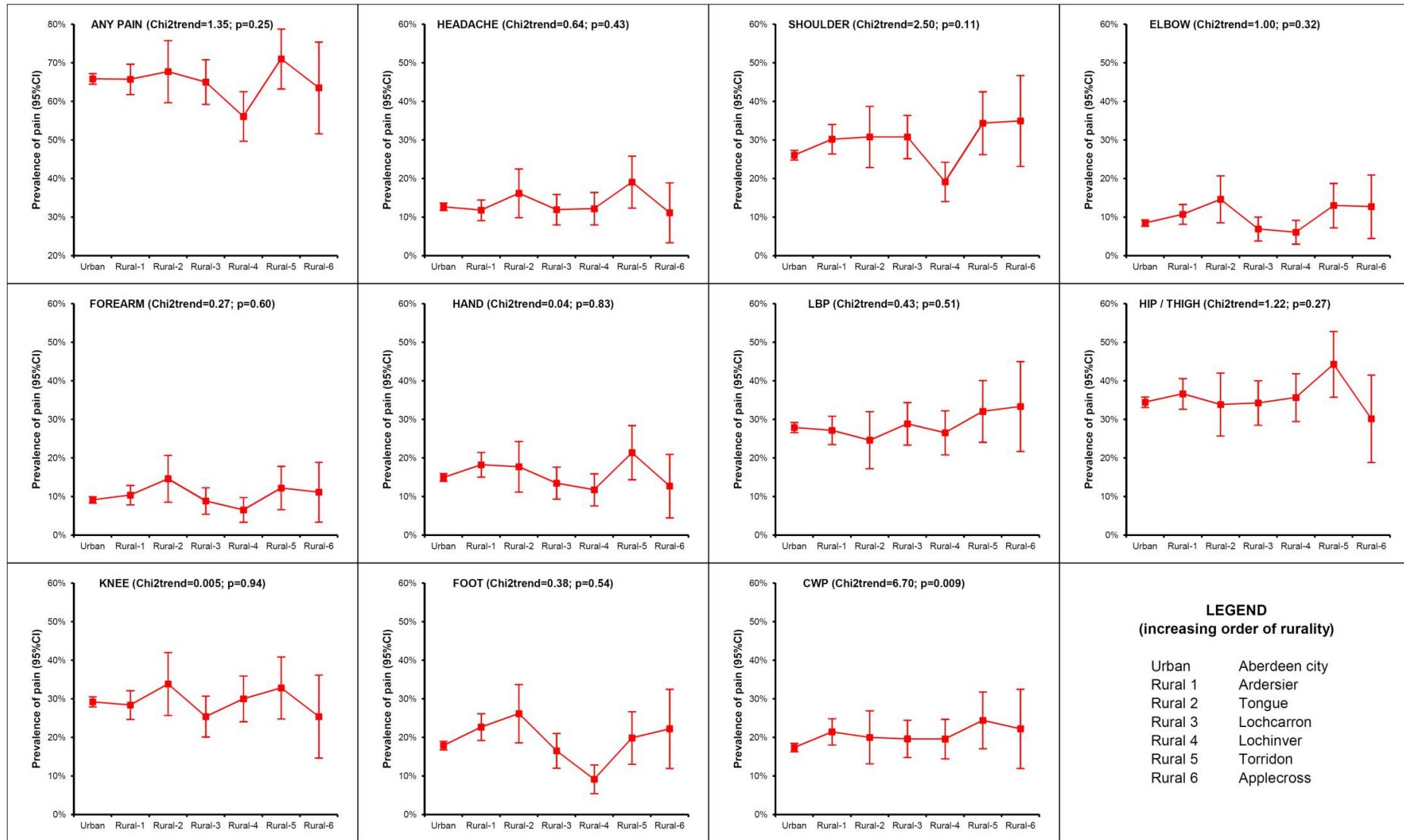
\*\* Not recorded in the rural study.

\*\*\* Numbers in parentheses denote:

(i) Approximate population size (an indication of the extent to which the community is rural); and

(ii) Approximate drive time to a community of >10,000 (an indication of the extent to which the community is remote).

**Figure 2 – Prevalence of regional and widespread pain conditions with increasing rurality**



**Table 2 – Association between chronic widespread pain and demographic factors, in rural population**

		Chronic widespread pain*		Risk ratio (95%CI)
		Yes	No	
Age	55-64yrs	130 (21.0%)	490	1.00
	65-74yrs	86 (21.1%)	322	1.01 (0.79-1.28)
	75-84yrs	48 (17.8%)	222	0.85 (0.63-1.14)
	>84yrs	20 (30.3%)	46	1.45 (0.97-2.15)
Sex	Male	113 (17.9%)	517	1.00
	Female	170 (23.3%)	561	1.30 (1.05-1.60)
Employment	Full-time	38 (14.4%)	226	1.00
	Part-time	33 (21.6%)	120	1.50 (0.98-2.28)
	Retired	199 (22.1%)	701	1.54 (1.12-2.11)
	Unemployed	7 (21.9%)	25	1.52 (0.74-3.12)
Education**	H-grade or above	143 (19.6%)	585	1.00
	S-grade or below	134 (22.8%)	455	1.16 (0.94-1.43)

\* Numbers vary due to missing data.

\*\* H-grade = Scottish 'Higher' grade exams, typically taken at age 17-18yrs. S-grade = Scottish 'Standard' grade exams, typically taken at age 15-16yrs.

**Table 3 – Association between chronic widespread pain and health, social and psychosocial factors, in rural population**

		Chronic widespread pain*		Risk ratio** (95%CI)
		Yes	No	
Self-rated health	Excellent	16 (9.7%)	149	1.00
	Very good	57 (12.3%)	405	1.32 (0.76-2.28)
	Good	98 (21.4%)	361	2.26 (1.34-3.80)
	Fair	83 (38.6%)	132	4.23 (2.5-7.16)
	Poor	34 (48.6%)	36	4.99 (2.83-8.81)
Number of people in household	>2 people	46 (28.6%)	115	1.00
	2 people	146 (18.1%)	672	0.60 (0.45-0.80)
	1 person	89 (23.5%)	289	0.78 (0.56-1.08)
Know neighbours	Most	107 (17.9%)	490	1.00
	Many	98 (21.1%)	367	1.20 (0.93-1.54)
	A few / None	82 (26.7%)	225	1.50 (1.15-1.95)
Trust neighbours	Most	149 (19.0%)	635	1.00
	Many	66 (20.4%)	258	1.12 (0.86-1.47)
	A few / None	72 (27.9%)	186	1.40 (1.08-1.81)
Recent social group attendance	Yes	166 (19.6%)	683	1.00
	No	120 (23.4%)	393	1.12 (0.89-1.40)
See friends / family / neighbours	Regularly	71 (18.9%)	305	1.00
	Often	61 (19.4%)	253	1.05 (0.77-1.45)
	Sometimes	62 (20.1%)	247	1.07 (0.78-1.48)
	Rarely	66 (24.4%)	205	1.33 (0.98-1.81)
Speak to friends / family / neighbours	Regularly	87 (23.8%)	278	1.00
	Often	63 (17.6%)	294	0.76 (0.56-1.03)
	Sometimes	65 (20.9%)	246	0.91 (0.68-1.23)
	Rarely	53 (21.3%)	196	0.98 (0.71-1.34)
Number of people to turn to in a crisis	>10	54 (24.3%)	168	1.00
	5-10	68 (17.7%)	317	0.72 (0.52-0.99)
	<5	151 (23.1%)	503	0.89 (0.67-1.18)
Feeling calm	All of the time	27 (11.5%)	207	1.00
	Most of the time	167 (19.7%)	679	1.74 (1.18-2.56)
	Little or none of the time	88 (33.2%)	177	2.98 (1.99-4.45)
Feeling downhearted	None of the time	84 (13.4%)	541	1.00
	A little of the time	158 (26.1%)	447	1.88 (1.47-2.40)
	Most or all of the time	41 (33.3%)	82	2.27 (1.61-3.20)

\* Numbers vary due to missing data.

\*\* Adjusted for age, sex, employment status, educational qualifications and geographical location.

**Table 4 – Factors independently associated with chronic widespread pain in rural population (multivariable model)**

		<b>Risk ratio* (95%CI)</b>
Sex	Male	1.00
	Female	1.24 (0.997-1.55)
Self-rated health	Excellent	1.00
	Very good	1.13 (0.65-1.95)
	Good	1.91 (1.13-3.23)
	Fair	3.33 (1.93-5.73)
	Poor	3.50 (1.92-6.39)
Feeling downhearted	None of the time	1.00
	A little of the time	1.50 (1.15-1.94)
	Most or all of the time	1.54 (1.07-2.20)
Number of people to turn to in a crisis	>10	1.00
	5-10	0.68 (0.50-0.93)
	<5	0.78 (0.60-1.02)

\* Adjusted for age, employment status, educational qualifications and geographical location which were forced into model.