

# NextLevel: Academic Success through Community and Belonging

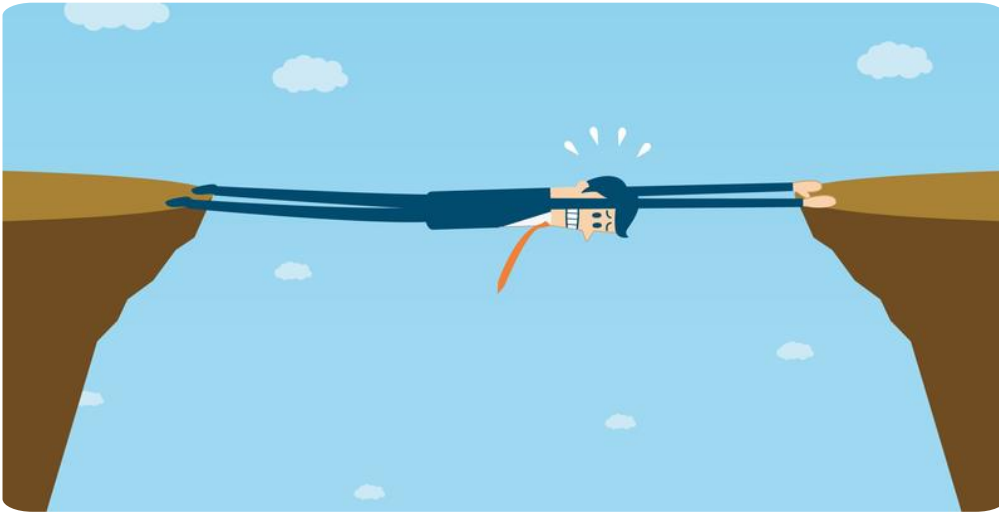
Jenny Spinks and Jules Mundair

SHIFT 2024

Academic Support Team



# NextLevel:



# Why more resources?

## New entrants to the university

Failure rate at the end of year 1 (2017/18)

- BTEC qualifications **21%**
- Mixed qualifications (BTEC/AS/A Level) **13%**
- Level 4/5 (direct entry) **12%**
- AS/A Level qualifications **7%**

Figures obtained from PAS13 – Tariff analysis report for 2017/18 students

# Connecting Students

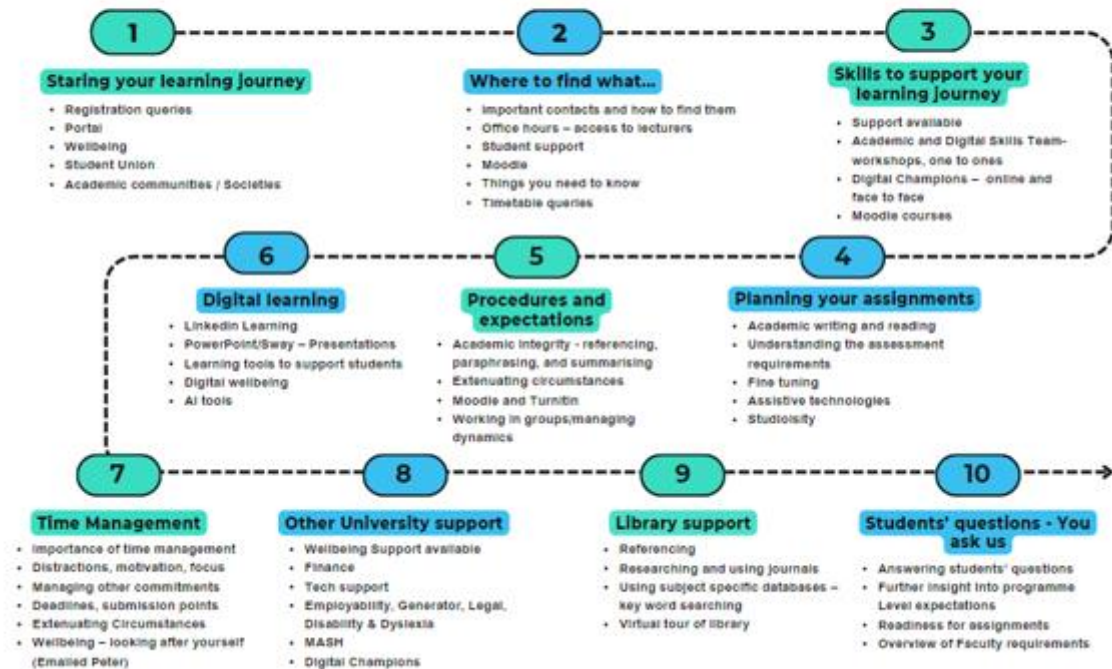
- Within groups - peers
- University Societies
- Staff
- Support Services
- Wellbeing



# Social dimensions of learning



# Your NextLevel in 10 steps

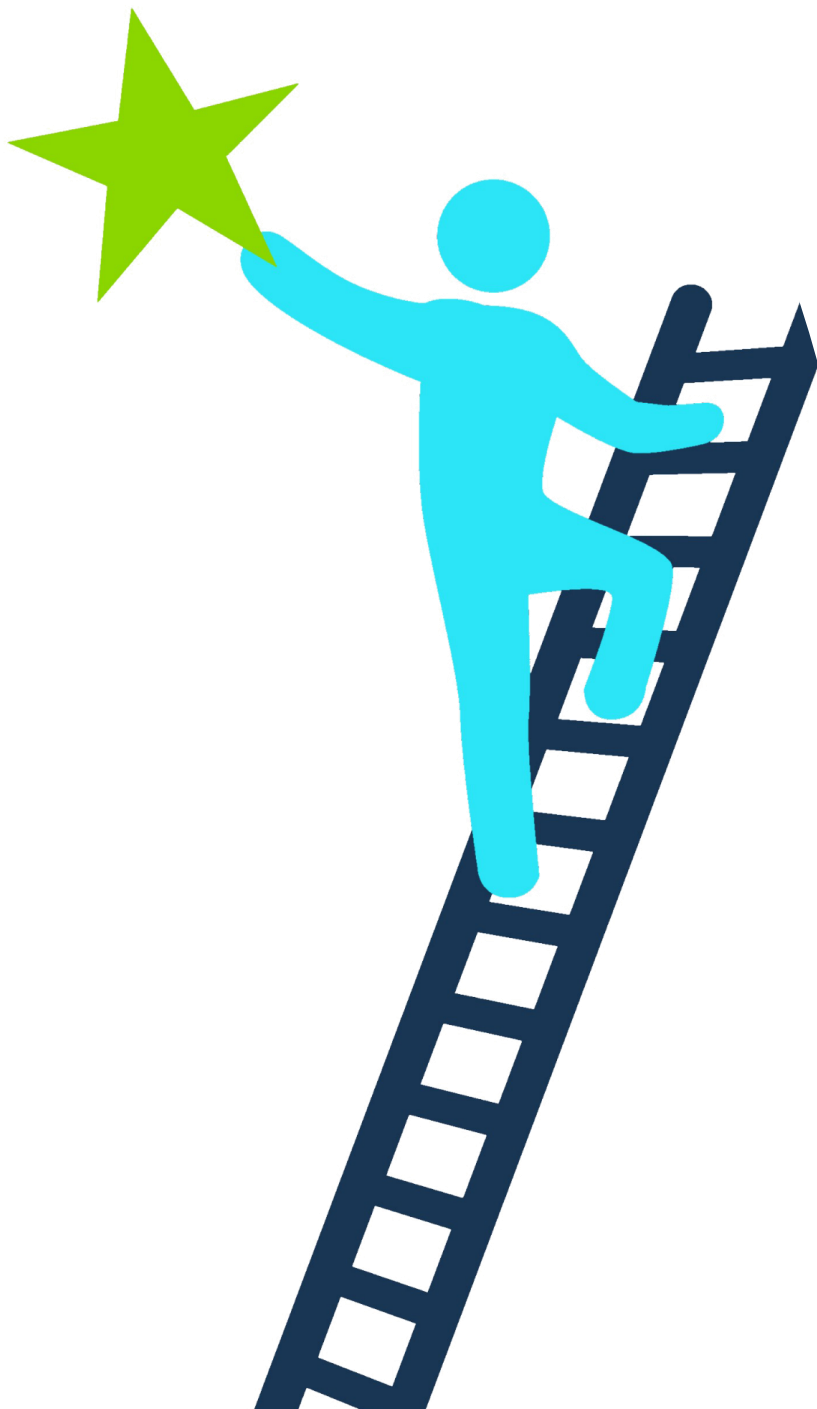


# Building connections and belonging

---

- Interaction and groupwork within sessions
- Informal connections
- Supporting and valuing different forms of engagement





# NextLevel and Belonging

---

- Tett et al (2017), found by building positive relationships between staff and peers, transition to HE can be successfully managed.
- Kenney (2023) recognises the importance of belongingness, its impact including on academic success to graduation rates, overall.

# Cultivating a sense of belonging In NextLevel

By cultivating a community within our offer, as a team we can boost a sense of belonging in students.

Creating campus-wide initiatives and devoting more resources to student support.

# Best Practice for Creating a Sense of Belonging



- Communication
- Engagement
- Retention
- Success



SHIFT 2024 - NextLevel: Academic  
Success through Community and  
Belonging



# References

Jackson, A. 2022. What have we learnt about student belonging and Inclusion. Available online [What have we learnt about student belonging and inclusion? - HEPI](#) 02/12/23

Kenney, T. (2023) 'Increasing Belongingness Through a Strengths-Based Approach', *Diverse: Issues in Higher Education*, 40(8), p. 40. Available at: <https://search.ebscohost.com/login.aspx?direct=true&AuthType=sso&db=trh&AN=16475490&site=ehost-live&scope=site> (Accessed: 26 November 2023)

Pedler, M. 2021. A sense of belonging at university: student retention, motivation and enjoyment. Available online: <https://www.tandfonline.com/doi/full/10.1080/0309877X.2021.1955844> Accessed: 02/12/23

Producers, L. Travis, E. and Pownall, M. (2023) "It's hard to feel a part of something when you've never met people": defining "learning community" in an online era', *Higher Education (00181560)*, 85(6), pp. 1219–1234. doi:10.1007/s10734-022-00886-w

Tett, L., Cree, V. and Christie, H. (2017) 'From further to higher education: transition as an on-going process', *Higher Education (0181560)*, 73(3), pp. 389-406. Doi:10.1007/s10734-016-0101-1.34-016-0101-1.

Thomas, L. 2012. Building Student Engagement and Belonging in Higher Education at a Time of Change: final report from the What Works? Student Retention & Success programme. Available online: <https://www.phf.org.uk/wp-content/uploads/2014/10/What-Works-report-final.pdf> Accessed: 02/12/23

West, J. 2022. Belonging feels good, improves student retention rates and supports other EDI efforts. Joanna West offers six ways campuses can foster this intangible essential. Available online: [Sense of belonging: how campuses can foster it | THE Campus Learn, Share, Connect \(timeshighereducation.com\)](#) Accessed: 05/01/24