

Using collaboration to create pathways to success for all students

Dr Dawn Reilly – Principal Lecturer in Accounting, Accounting and Finance, University of Greenwich

Ms Katherine Leopold – Faculty Employability Manager, Business School, University of Greenwich

Context for the case study



Year 2 students - professional practice module for accounting students



A post-1992 university with a commitment to widening participation

'Commuter students'
Students on
Extended
programmes

Module design

Delivery

- 12 weeks x 2 hour workshops using Business School Laptops

Assessment
design

- Initial research findings report
- Group presentation
- Final report

The challenges faced by students



**Commuter students
have limited time for:
self-study
finding 'space' to plan
their careers**



**Widening
participation:
Students whose level
3 qualifications are
BTECs are accustomed
to a robust formative
feedback loop to
support their studies**



**Lack of self-
confidence**

Solutions to the challenges



Increase the amount of formative feedback:

The linked assessments already facilitate useful feedback from early summative assessments to feed into later assessments

Introduce a schedule of formative feedback before each summative assessment (including scheduled appointments)



Collaboration with employability consultant:

planning, teaching, formative feedback on the module

Collaboration among students

- Group research task – financial analysis of a company and competitor
- **Inclusive curriculum:** To encourage engagement:
 - choice of groups
 - choice of companies



Inclusivity



Timetabled teamwork with extra flexibility

- Timetabled teamwork sessions
- Students work together outside of class



Access to technology

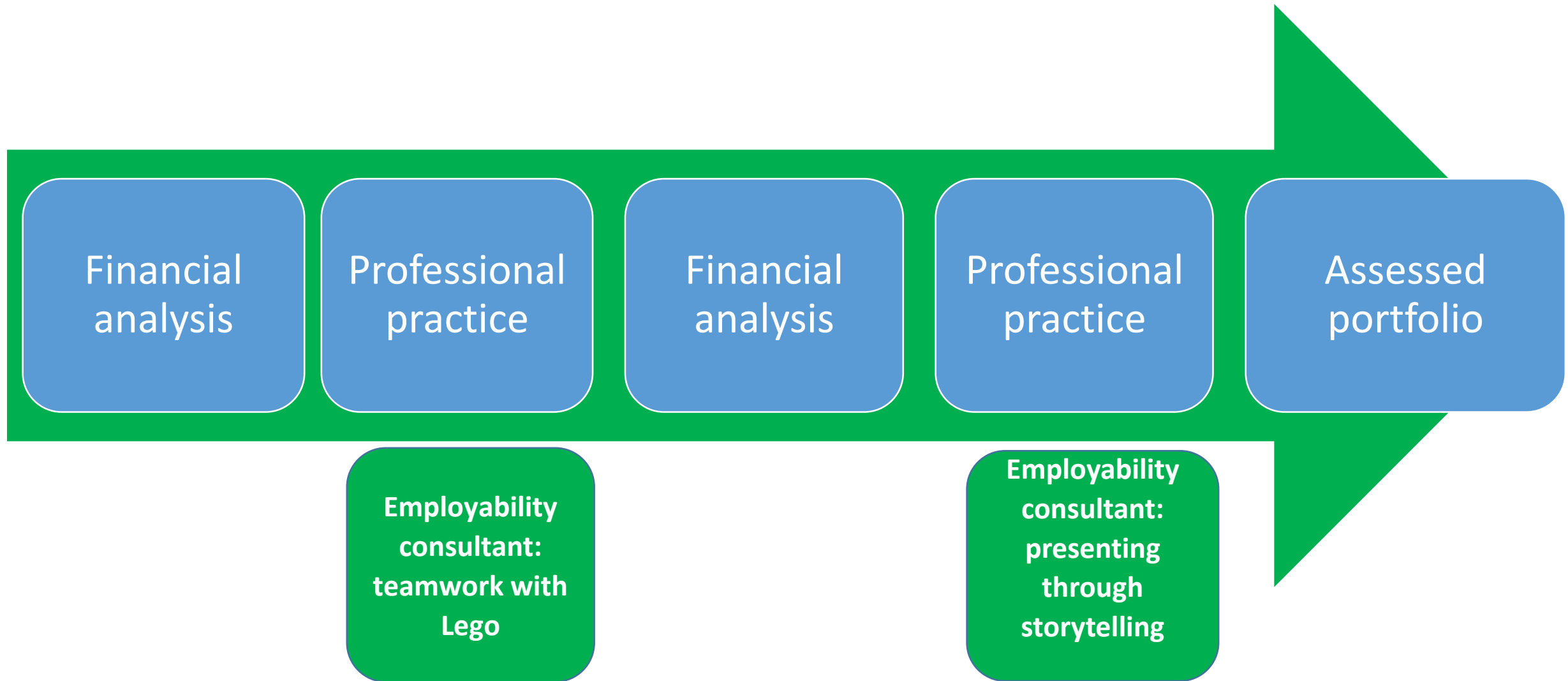
- Not all students have their own laptop or want to bring their laptop to campus



Technology in teaching spaces

- We used the Business School's Mobile 'IT Lab'

Module design: Financial Analysis and Professional Practice



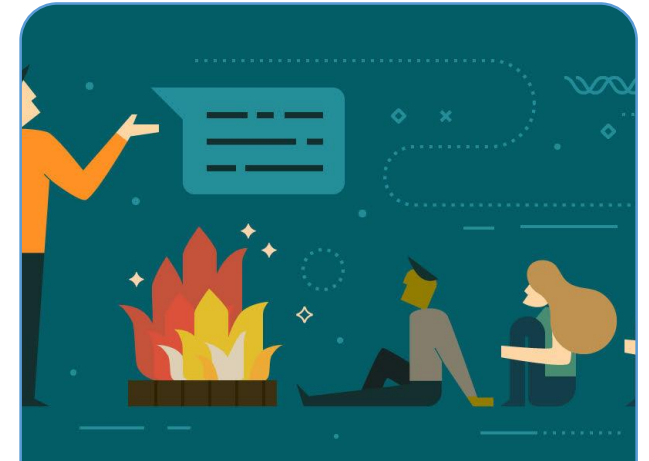
Collaboration with employability



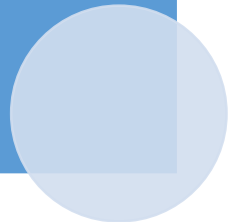
Module Design



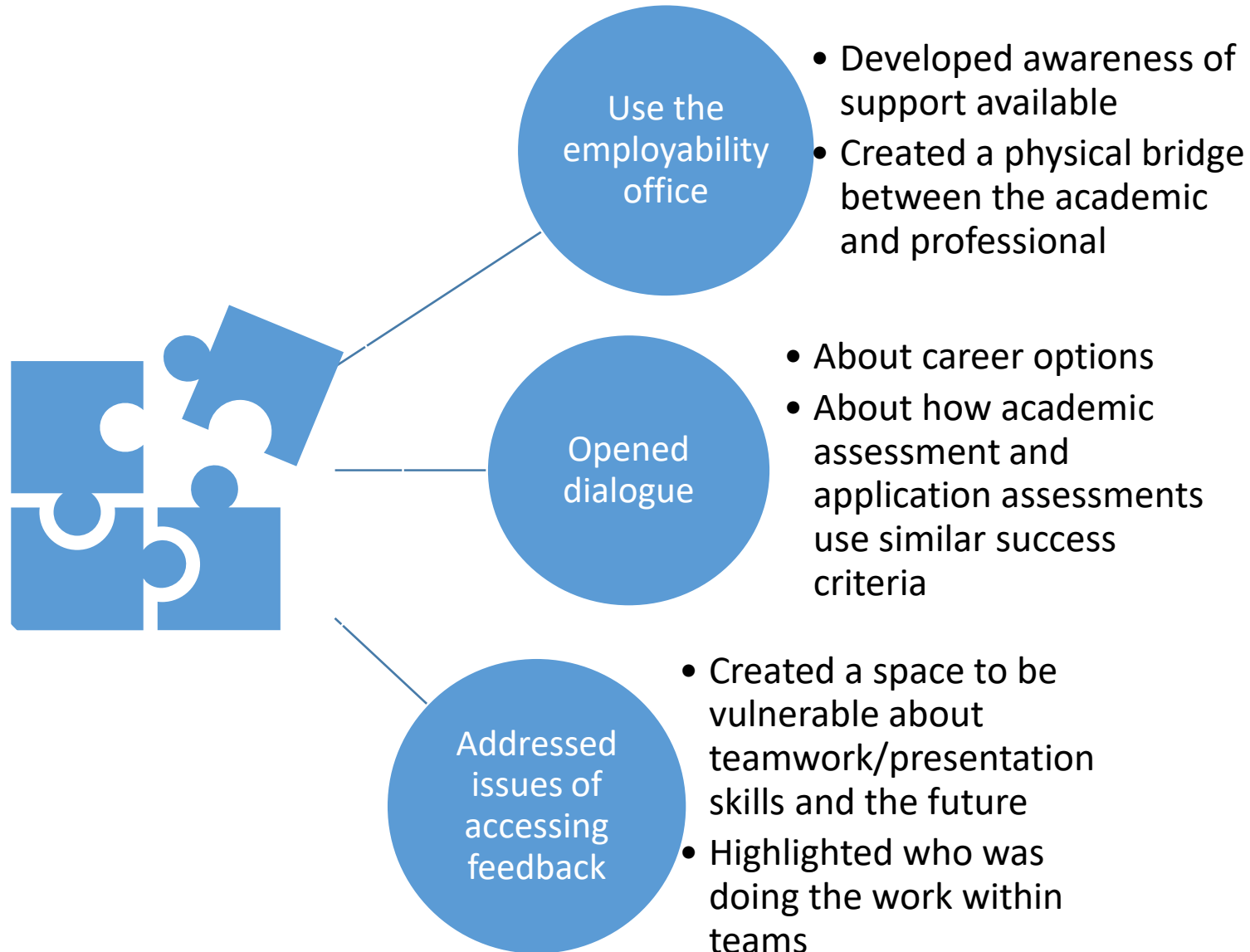
Teamwork with
Lego



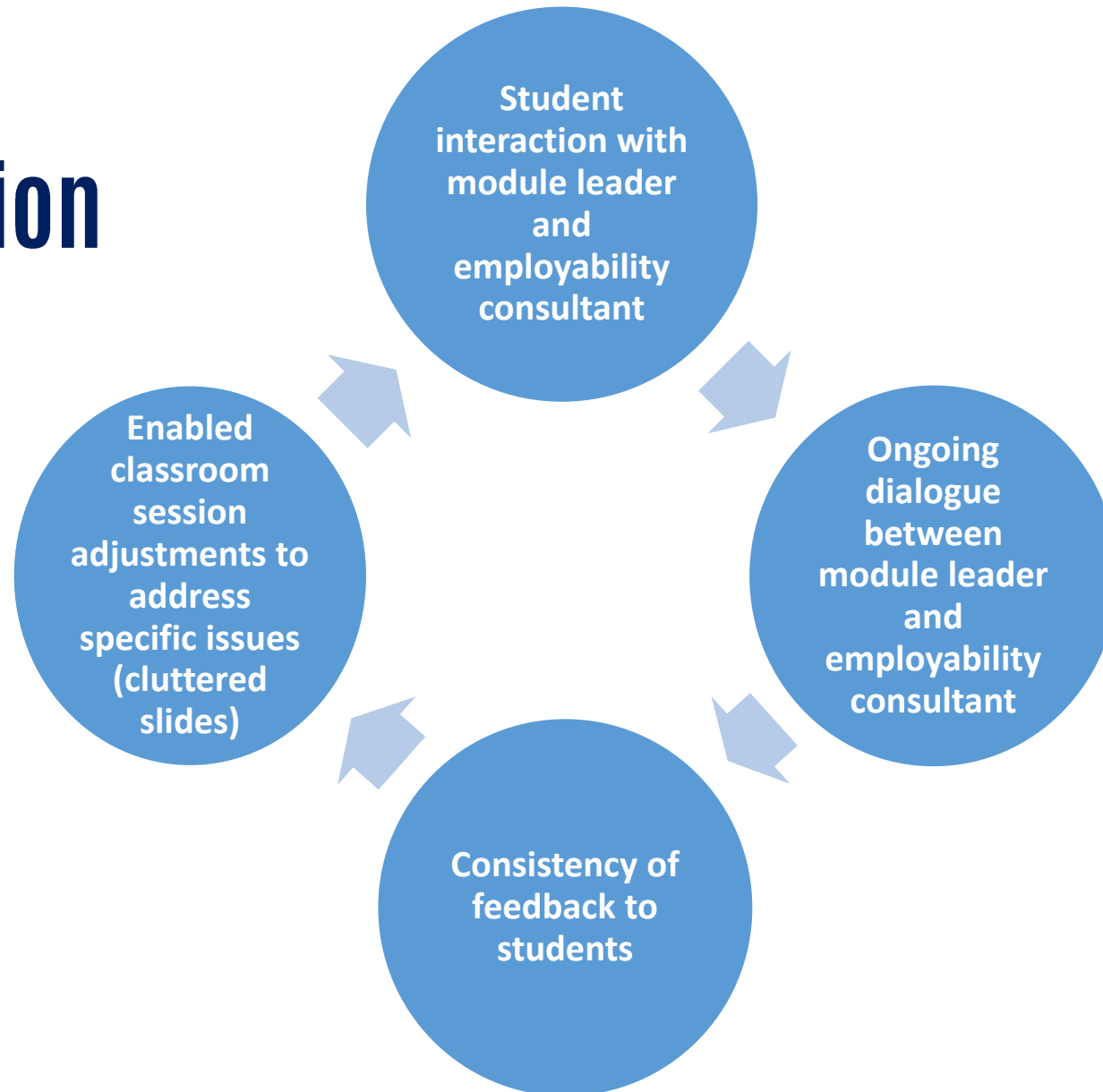
Presenting
through
storytelling



Feedback with employability consultant



Collaboration



Results so far



Attainment outcomes: Average module grade increased by +8% in 2019



We hope for improved **employment outcomes:**

92% of students agree that the module has helped to enhance the skills and knowledge needed after graduation

Conclusion

We shall continue to use collaboration to tackle gaps in:

- employment outcomes; and
- attainment outcomes



**CHANGE
STARTS
HERE**

Business School Employability Office
Department of Accounting and Finance

University of Greenwich is a charity and company limited by guarantee, registered in England (reg. no. 986729).
Registered office: Old Royal Naval college, Park Row, Greenwich, London SE10 9LS