

DEPTFORD

SMASHfestUK

12-16 FEBRUARY '18

Half-
Term

FREE!

FLOOD!

Welcome to SMASHfestUK 2018: FLOOD

12th - 16th February 2018

We're delighted to be returning to Deptford this year with **SMASHfestUK 2018: FLOOD** - a crazy, glorious, 5-day FREE festival. It's a mash-up of comedy, experiments, games, art, music, den-building, storytelling and much, much more for all ages.

This year - we've heard that Deptford is at risk of FLOOD! What would happen if the Thames burst its banks and Deptford became submerged? How would we survive? How could we escape? If Deptford turned into wetlands - what would we live in? What food would we live on? And if we got into seriously deep water and the whole Earth was under threat - could we find another home somewhere living in space?

This year's activities include interactive science sand-pits, games, demonstrations and experiments, a sensory room, virtual reality space tours, a murder-mystery court case, a game of infective detectives, den-building, variety performances, opportunities to "meet the mosquitoes", build your own hologram, our inspiring, family-friendly play, Cosmic Jives and much much more. As usual, **everything is FREE** (although your free tickets can be reserved for performances, talks and shows) - ***all we need is YOU!***

Last year, **SMASHfestUK 2017: SUPERVOLCANO** was a huge success, entertaining nearly 2000 people over the course of the half-term holiday. We're back for 2018, even bigger and better than before!

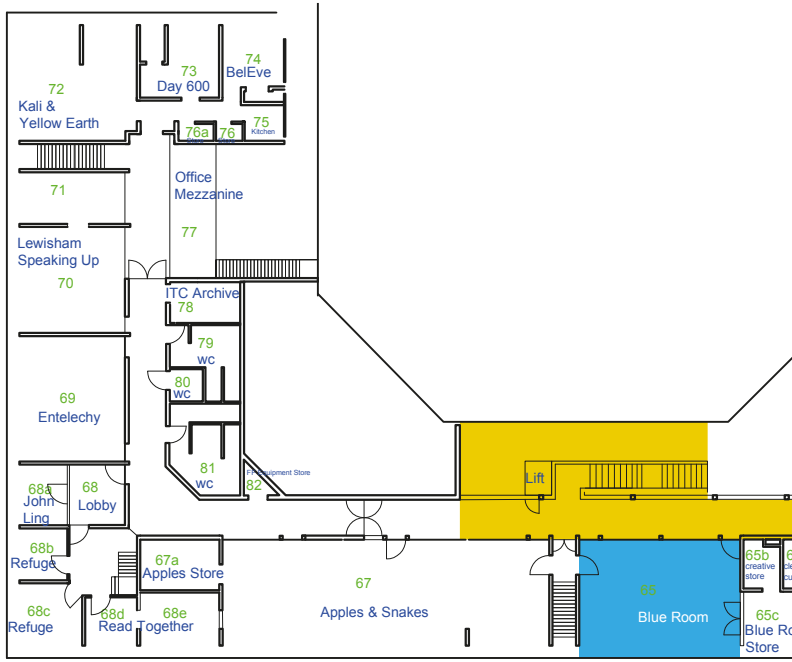
SMASHfestUK is a STEM/Arts organization, festival series & movement founded in 2015 with the aim of widening participation & increasing diversity (gender, ethnic & socio-economic) in STEM & the Arts education and professions, & increasing social inclusion in neglected communities.

Events will take place at:

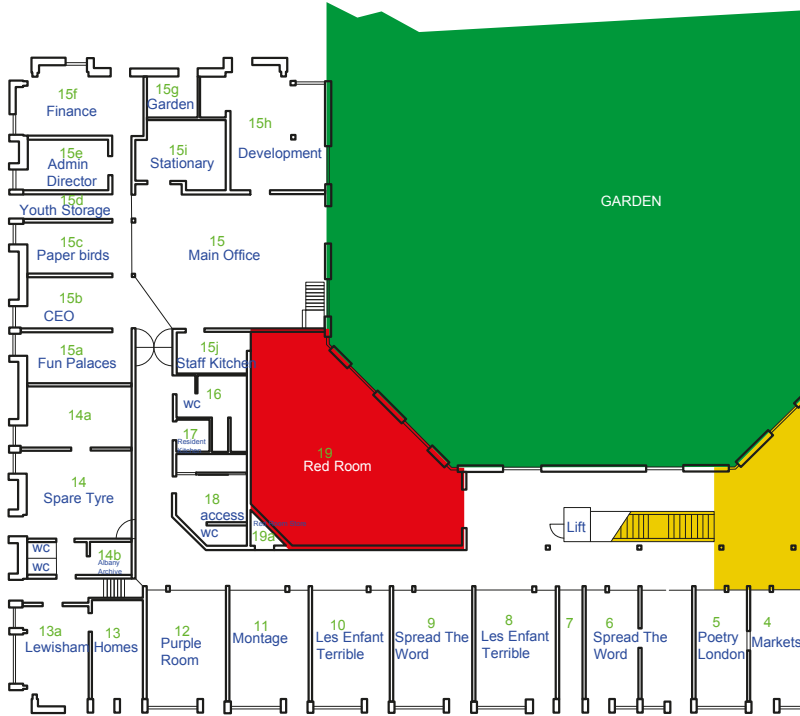
- Deptford Lounge **12th - 16th FEB.**
- The Albany **15th & 16th FEB**

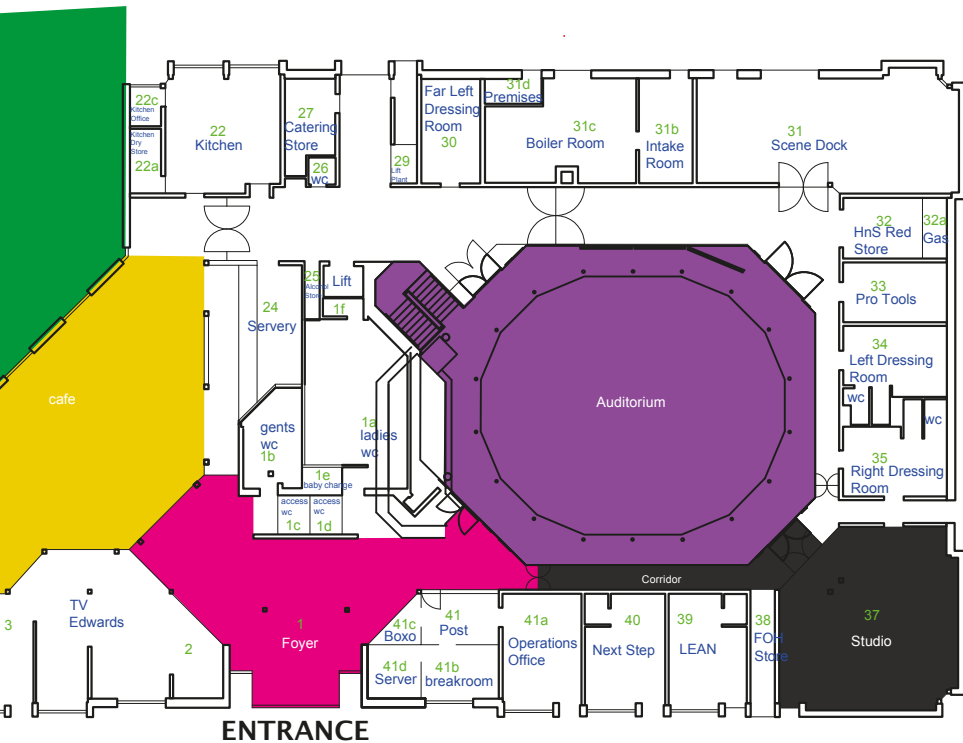
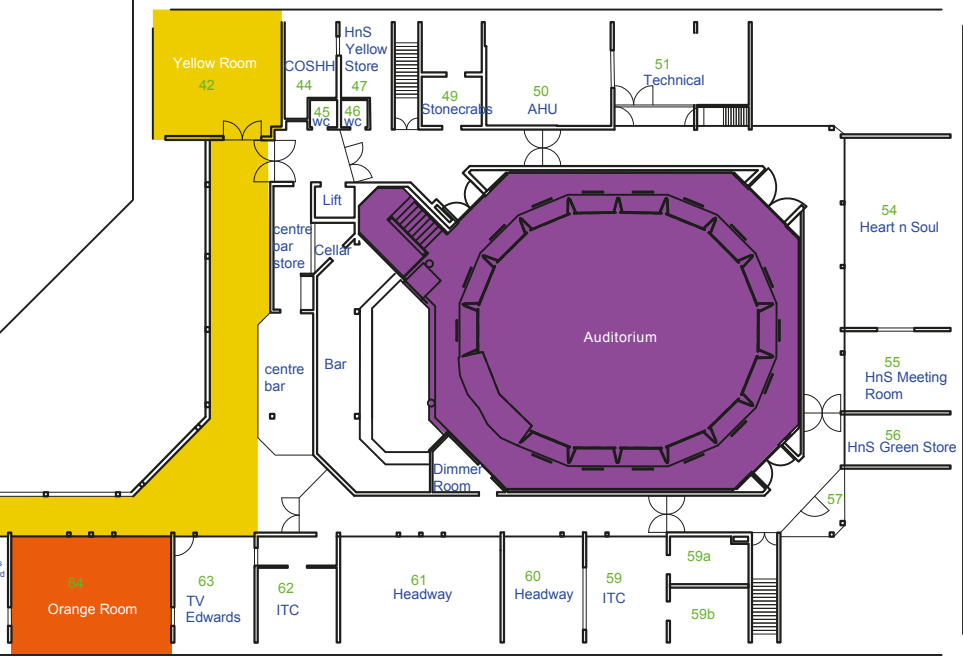
Maps of The Albany	3/4
Schedule	5
+ DEPTFORD LOUNGE [12-16 FEB]	
ID Cards & Welcome Desk	6
Blood Artist	7
Future Farmers	8
Survive The Swamp	9
Bug Off!	10
Sandpit!	11
Detective Dot	12
Living In Space Design Exhibition	13
Stilt City	14
Secret Film Club	15
+ THE ALBANY [15-16 FEB]	
> THE ALBANY - FOYER	
ID Cards & Welcome Desk	16
Living in Space Registration	17
> THE ALBANY - AUDITORIUM	
Comedy Club 4 Kids	18
Cosmic Jives	19
STEM the Tide Variety Show	20
The Greatest Comic Making Show...	21
> THE ALBANY - RED ROOM	
Water Wizard!	22
Look Up!	23
How to Survive a Flood...	23
The Curious Case of The Flood...	24
> THE ALBANY - GARDEN	
HAZ 2 O - Murky Water	25
The Big Stink - Lab in a Lorry!	26
Den & Raft Building	27
Deptford-on-Sea	28
Survival Village & Space Camp	29
> LIVING IN SPACE	
Space Training Stage 1	30
Space Training Stage 2	31
Cafe Living in Space Activities	32
Deptford-on-Sea & Flood Hazard	33
> THE ALBANY - YELLOW ROOM	
MDX Theatre Arts Installations	34/35
> THE ALBANY - BLUE ROOM	
Making Waves & SSFX	36
> THE ALBANY - ORANGE ROOM	
I Survived a Real Tsunami	37
Build the Lennox! & NMM Submerged	37
Partners / Sponsors	38

First Floor



Ground Floor





SMASHfestUK 2018

12th - 16th February 2018

DEPTFORD LOUNGE

Monday 12th - Friday 16th

➔ DROP IN*

All Events 10am - 4pm unless specified

ID Cards & Welcome Desk

Tough Blood

Future Farmers

Survive The Swamp

Bug Off!

Sandpit!

Detective Dot *

Living In Space Design Exhibition

Stilt City

Secret Film Club - Various Times*

* Enquire at Welcome Desk:
Front of Deptford Lounge

THE ALBANY

Thursday 15th & Friday 16th

➔ TICKETED

Reserve tickets for performances, talks & shows

> **THE ALBANY - AUDITORIUM**

Comedy Club 4 Kids - Thurs & Fri 11am-12pm

Cosmic Jives - Thurs 2-3pm / Fri 3-4pm

STEM the Tide Variety Show - Thurs 4-5.15pm

The Greatest Comic Making Show... Fri 1-2pm

> **THE ALBANY - RED ROOM**

Water Wizard! - Thurs & Fri 10am

Look Up! - Thurs 12am-1pm / Fri 2-3pm

The Curious Case... - Thurs 3-4pm / Fri 4-5pm

How to Survive a Flood... - Fri 12am-1pm

➔ DROP IN*

All Events 10am - 4pm unless specified

> **THE ALBANY - FOYER**

ID Cards & Welcome Desk

Living in Space Registration

> **THE ALBANY - GARDEN**

HAZ 2 O - Murky Water

The Big Stink - Lab in a Lorry!

Den & Raft Building

Deptford-on-Sea

Survival Village & Space Camp

> **LIVING IN SPACE**

Space Training Stage 1

Space Training Stage 2

Cafe Activities

> **THE ALBANY - YELLOW ROOM**

Deptford-on-Sea

Prepare for Flooding

Through the Flood!

> **THE ALBANY - BLUE ROOM**

Making Waves

SSFX

> **THE ALBANY - ORANGE ROOM**

I survived a Real Tsunami - Fr 1-2pm

Build the Lennox!

NMM Submerged

* ALL EVENTS ARE FREE - ** PAY WHATEVER YOU DECIDE IT IS WORTH
TICKETS TO BE RESERVED FOR PERFORMANCES, TALKS & SHOWS

→ DROP IN*

ID CARDS & WELCOME DESK

SMASHfestUK

DEPTFORD LOUNGE

MONDAY - FRIDAY: 10AM-4PM



If Deptford and the World are in peril from flood and disaster - who you gonna call? The **SMASHfestUK** task force of course - and you can be part of it! Come to the welcome desk where we'll figure out your vital role in saving the world and furnish you with your very own **SMASHfestUK** task force ID badge and all-important information about how to become a world-saver! Also come here to find out where to go, what to do and what to see and maps of the festival.

→ DROP IN*

TOUGH BLOOD

STEPHEN RUDDER

DEPTFORD LOUNGE

MONDAY - FRIDAY: 10AM-4PM



Tough Blood is a dynamic filmed performance piece by artist Stephen Rudder which explores the relationship sickle cell anaemia sufferers have with their blood. In collaboration with choreographer Skytiz, he combines the testimonies of sickle cell sufferers and music by composer Richard Edwards with an emotive performance by dancer Kwame Asafo-Adhere..

→ DROP IN*

FUTURE FARMERS

SMASHfestUK**DEPTFORD LOUNGE****MONDAY - FRIDAY: 10AM-4PM**

In a world where Deptford is flooded how would you feed yourself, your family and friends?

Future Farmers experiments with growing plants without soil! Decorate your very own observation jar and take your own cutting from our mother plants and watch your stem grow into its very own plant using only water!

This fun drop-in activity is running all week in the **Deptford Lounge**.

Sponsors: Royal Society of Chemistry, Wellcome

→ DROP IN*

SURVIVE THE SWAMP

SMASHfestUK

DEPTFORD LOUNGE

MONDAY - FRIDAY: 10AM-4PM



Escaping a flood is a squelching, soggy problem.

In this exciting interactive game of survival, players need to collect everything they will need to escape from the flooded Deptford wetlands, and evade scary malarial mosquitoes, tidal surges and other flood related risks.

Come along and see if you can... **Survive the Swamp!**

Sponsors: Wellcome & Royal Society of Chemistry

→ DROP IN*

BUG OFF!

London School of Hygiene & Tropical Medicine
DEPTFORD LOUNGE
MONDAY - FRIDAY: 10AM-4PM



Reports of bites from flying insects in the UK are rising, but just how tasty are you to the average moszzy? How likely are you to get bitten? If you do, what are the consequences?

Bug Off! is an interactive campaign helping keep you safe from biting insects.

You can find out how attractive you are (to mosquitoes) compared to your friends, you can pack a bag to get Bug Body Ready, learn about how mosquitoes find you and how you can stop them

Sponsors: Wellcome

Partners: LSHTM: The London School of Hygiene & Tropical Medicine

→ DROP IN*

SANDPIT!

**UCL EARTH SCIENCE DEPT. &
ROYAL SOCIETY OF CHEMISTRY**

DEPTFORD LOUNGE

MONDAY - FRIDAY: 10AM-4PM



What would happen if a tidal surge overwhelmed the Thames Flood Barrier? Rising sea levels and storm surges of just a few metres higher than usual could overwhelm our flood defences and saturate the city!

Playing in **UCL's Earth Science Dept.** interactive sand-pit and using the power of science you can see exactly what happens when you change the flood defences - and how we can design a future Deptford safe from the sea!

Sponsors: Royal Society of Chemistry

→ DROP IN*

DETECTIVE DOT

DEPTFORD LOUNGE**GO TO WELCOME DESK FOR EXACT TIMINGS***WELCOME DESK AT FRONT OF DEPTFORD LOUNGE***Who is Detective Dot?**

Dot eats binary for breakfast, logic for lunch and HTML for tea. She's a nine-year-old coder on a mission with the Children's Intelligence Agency - investigate teenage trillionaire Shelly Belly and her global tech empire.

Expect farting selfie-sticks, micro-pigs on hover-boards, and the most high-tech children's spy unit in the world.

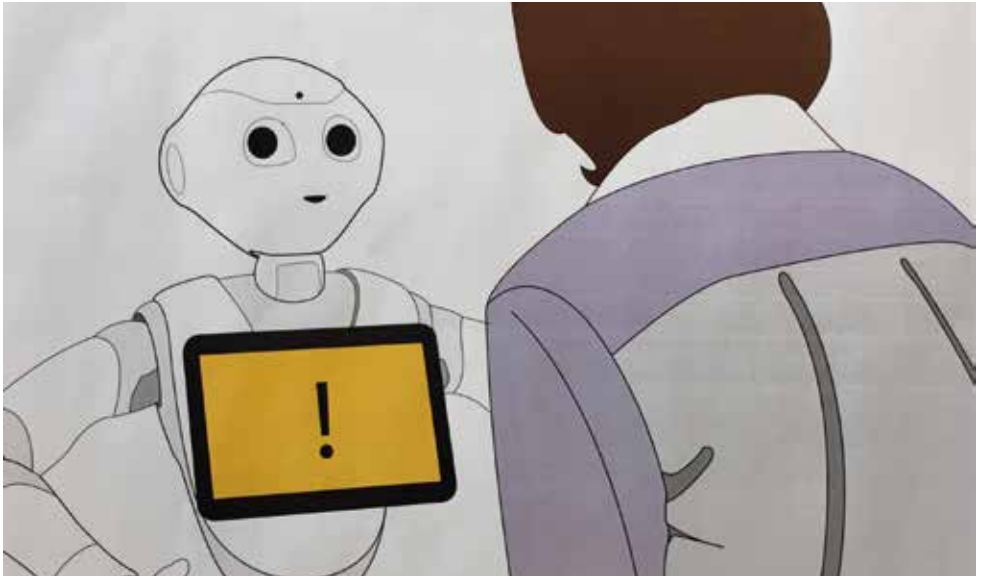
→ DROP IN*

LIVING IN SPACE DESIGN EXHIBITION

SMASHfestUK, MIDDLESEX UNIVERSITY, DEPTFORD GREEN
SCHOOL, LLANGATWG COMMUNITY SCHOOL, ASTROCYMRU

DEPTFORD LOUNGE

MONDAY - FRIDAY: 10AM-4PM



If the world really did become devastated by natural disaster, we might have no option except to look to space for a new home for civilisation - could it be the Moon? Could we live on Mars? What would it take to build a world in outer space?

Students from **Middlesex University, Deptford Green and Llangatwg secondary schools** were tasked with answering these tricky questions,

and you can experience their results in our **Living In Space Installation** - but if you want to see how these young designers came up with their ideas, you can see their amazing design processes, ideas and 3D models in this exhibition. Try out the **Deptford Green team's VR Space Helmets** and begin your exploration of the stars!

Sponsors: Science & Technology Facilities Council, UK Space Agency & Royal Academy of Engineering, Middlesex University

→ DROP IN*

STILT CITY

JENNY EDBROOKE & LUKE BRABANTS

DEPTFORD LOUNGE & GIFFIN SQUARE

MONDAY - FRIDAY: 10AM-4PM



London has been built on a floodplain. Usually waters are held back by the walls of the River Thames and the Thames Flood Barrier. Now those defences have been overcome and Deptford is submerged. With waves crashing against the windows of **Deptford Lounge**, we must take action!

Artists and architects at the ready. We need to build a city on stilts to keep us safe from the waters below!

Come and join resident artist **Jenny Edbrooke** and her team of artists to

create your own unique house on stilts to add to our stilt city super-structure!

We have all the arty essentials to design and build a quirky miniature home to save your family. Or if you would rather make waves graffiti artist Luke Brabants is on hand on Monday and Tuesday to guide you in spray-painting the terrifying tsunamis of the flood scene all around **Deptford Lounge**.

Sponsors: Arts Council England

→ DROP IN*

SECRET FILM CLUB

SMASHfestUK

DEPTFORD LOUNGE

MONDAY - SATURDAY: VARIOUS TIMES

ENQUIRE AT DEPTFORD LOUNGE



This amazing line-up of Flood based film fun will be at the **Deptford Lounge** all week.

Can you guess the names of the watery films? I*e-Ag* 2 to W*terwo*ld.

Come and see what would happen if the world got wet!

→ DROP IN*

ID CARDS & WELCOME DESK

SMASHfestUK

ALBANY THEATRE - FOYER
THURSDAY & FRIDAY: 10AM-4PM



If Deptford - and the World are in peril from flood and disaster - who are you gonna call?

Well the **SMASHfestUK** task force of course - and you can be part of it!

Come along to the welcome desk where we will figure out your vital role in saving the world and furnish you with your very own **SMASHfestUK** task force ID badge and the all-important information about how to become a world-saver!



Also come here to find out maps and festival information; where to go, what to do and what to see.

GENERAL INFORMATION STAND

Want to know where to go, what to do and what to see?

Our information stand has all the answers, and our ID Cards activity can help you imagine what you can be in the future...and how you can help save the world!



Come visit us and we will tell you where to go... But in a nice way!

→ DROP IN*

LIVING IN SPACE REGISTRATION

SMASHfestUK & MIDDLESEX UNIVERSITY

ALBANY THEATRE - FOYER
THURSDAY & FRIDAY: 10AM-4PM



Living in Space Registration. Pepper the Robot will help you Sign-up to join our Space Team, and begin your training.(See 'Living in Space' pages for more detail).

PLUS! Amele Sossavi from Middlesex University's Theatre Arts - Sam, the First Responder Puppet: Sam is a first responder who has been working as a flood rescuer for years. Their appearance has been aged and worn because of stress but they are still happy.

Sponsors: Science & Technology Facilities Council, UK Space Agency, Royal Academy of Engineering, Middlesex University

→ TICKETED*

COMEDY CLUB 4 KIDS

COMEDY CLUB FOR KIDS

THE ALBANY - AUDITORIUM

THURSDAY & FRIDAY: 11-12AM



Comedy Club 4 Kids get the best stand-ups and sketch acts from the international circuit to do their thing for an audience of children and their families, without the rude bits!

“ Our SMASHfestUK shows are extra special as the comics will be talking about flood as well as trying not to say any words ruder than ‘bum!’ ”

It's a comedy club right but it's in the day and kids are allowed in so there's a higher than usual chance of heckles like "why is that your face!"

→ TICKETED*

COSMIC JIVES

REBECCA MANLEY

THE ALBANY THEATRE - AUDITORIUM

THURSDAY 2-3PM & FRIDAY 3-4PM

BOOKING ADVISED: SEE ALBANY WEBSITE | SUITABLE FOR AGES 7+



Sponsors: Arts Council England

A new play by **Rebecca Manley** about girls, science and one of the hazards of living in space, a solar storm.

Rory doesn't like doing what is expected of her. When she's told science is for boys and people like her don't go to university something explodes quietly inside her and she is determined to prove everyone wrong. But she is stopped in her tracks when she hears of an eruption elsewhere, on the surface of the sun. And Rory knows more than most 17 year olds what this might mean for Deptford and way way beyond.

A cast of young local actors bring to life this new play that asks what might happen if a solar storm hits the earth.

Expect playful & wholly subjective musings on astro-physics, the Matilda effect & rubber chickens.

SUITABLE FOR AGES 7+



STEM THE TIDE VARIETY SHOW

SMASHfestUK

THE ALBANY THEATRE - AUDITORIUM
THURSDAY 15th 4-5.15PM

BOOKING ADVISED: SEE ALBANY WEBSITE OR BOX-OFFICE

Come and immerse yourself in the story of the Great London Flood of 2018! Told through music, poetry, comedy, rhyme and song, we trace the path of a rising storm surge as it bombards its way up the Thames, breaking down river defences and heading towards Deptford. It's a bigger surge than has ever been seen since the deadly flood of '53. Can the Thames flood barrier hold back the tide? Or are we all destined for a dunk in a watery Deptford disaster! Bring your broly!

With an amazing line-up of local performers - our 'Science Talent Contest Winners 2017' from the International School Greenwich and Haberdashers & Aske's Hatcham College, with seasoned professionals such as Poetry Takeaway, Simon 'Ugly Flood Animals' Watt, Sheila Pearson, Nate Adams, and more!



SUITABLE FOR AGES 5+ Sponsors: Royal Society of Chemistry, Wellcome

→ TICKETED*

THE GREATEST COMIC MAKING SHOW ON EARTH!

ROBIN ETHERINGTON & PHOENIX COMICS

THE ALBANY THEATRE - AUDITORIUM

FRIDAY 16TH FEBRUARY 1-2PM

BOOKING ADVISED: SEE ALBANY WEBSITE | SUITABLE FOR AGES 7+



Folks - escape the troubles of the Flood and the set your brains to INSPIRE!

During a high-energy comic making show Robin Etherington (one half of the Etherington Brothers comic making partnership) will reveal the secrets to awesome storytelling through a wealth of examples improvised straight from your suggestions!

Guaranteed to leave young and old minds alike whirring with creativity and enthusiasm, this interactive presentation empowers the storyteller and artist in all of us.

SUITABLE FOR AGES 5+

BOOKING ADVISED: ALBANY WEBSITE

Sponsors: Arts Council England

→ TICKETED*

WATER WIZARD!

JON WOOD - SMASHfestUK**THE ALBANY - RED ROOM****THURSDAY 15TH & FRIDAY 16TH 10-11AM**

Jon Wood is SMASHfestUK's resident science busker but he has a particular passion for the wet stuff. Yes, water!

During times of flood it might seem like an enemy, but we couldn't survive without it. In fact we're mostly made up of the stuff!

So what is it about water that makes it such an incredible substance? And what can you do with it that you never thought possible?

Jon Wood will show you how you can recreate powers of Mr Freeze and Elsa - bend it, break it and smash it apart!

Sponsors: Royal Society of Chemistry, Wellcome

Learn how to become a water wizard!

→ TICKETED

LOOK UP!

SIMON WATT

THE ALBANY - RED ROOM

THURSDAY 15TH 12AM-1PM & FRIDAY 16TH 2-3PM

SMASHfestUK favourite Simon Watt, previously seen waving his knives around in these parts as Dr De'ath, has set his sights on the stars. Join Simon as he explores some of the science behind space exploration. Which planet is hottest? Which would float in a swimming pool? And just how much space is in space? Join him in this live show to see what experiments you can recreate at home and learn about what you can see if you only look up!



Sponsors: Wellcome

→ TICKETED

HOW TO SURVIVE A FLOOD

DR PADDY MORGAN & ADEY MAYHEW

THE ALBANY - RED ROOM

FRIDAY 16TH 12AM-1PM

If Deptford ended up underwater - would you know how to survive the flood? If not - fear no more! Dr Paddy Morgan, flying doctor and flood rescue technician along with Adey Mayhew, international rescue consultant, and flood rescue guru show the survival skills that make the difference between life and death. Pelt Adey with ice-cold water in this survival spectacular and find out how a cold shower could save your life!



Sponsors: Wellcome



THE CURIOUS CASE OF THE FLOOD IN THE NIGHT-TIME

SMASHfestUK

THE ALBANY - RED ROOM

THURSDAY 15th 3-4PM & FRIDAY 16th 4-5PM



A flood has submerged London, and a gruesome discovery has been made in Deptford Creek. Join in our Murder Mystery show - where YOU are the jury! *Who is the victim? Could you be called up as a witness? Is everything really as it seems?*

With the help of forensic scientists, eye-witnesses and a judge, see if you can help us solve this curious case...

Sponsors: Royal Society of Chemistry, Wellcome

→ DROP IN*

HAZ 2 0 - MURKY WATERS

SMASHfestUK, DR NATE ADAMS & UK EMERGENCY RESCUE TEAM

THE ALBANY - GARDEN
THURSDAY & FRIDAY: 10AM-4PM



Something strange has been happening. Since the flood, people all around Deptford are falling sick and no one knows why.

Join the **UK Emergency Response team**, led by **Dr Nate Adams**, and wear the hat of an investigative epidemiologist to help find the cause of this sickness.

In this mini adventure, you'll collect samples from ill patients, run chemical tests and consult the field lab to find answers that will save the lives of many!



Sponsors: Royal Society of Chemistry, Wellcome

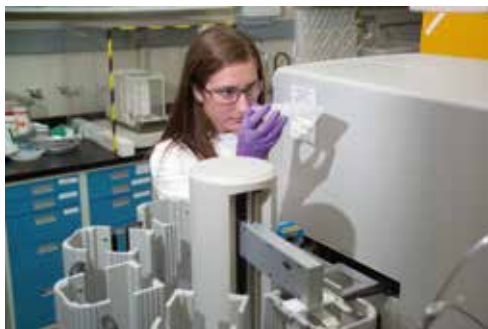


THE BIG STINK - LAB IN A LORRY!

KINGSTON UNIVERSITY

THE ALBANY GARDEN & DEPTFORD LOUNGE

THURSDAY & FRIDAY: 10AM-4PM



Directly from **Kingston University**, **Lab in a Lorry**'s mobile science laboratory will flood Deptford with science experiments for all ages.

Find them at **The Albany** (they're hard to miss!) and ask them how you can identify microbes that could infect you after a flood.

Alternatively, you can explore your DNA and all things chemistry in the lorry stationed in front of the **Deptford Lounge!**

Sponsors: Royal Society of Chemistry, Wellcome

→ DROP IN*

DEN & RAFT BUILDING

THE SECRET ADVENTURER'S CLUB

THE ALBANY - GARDEN

THURSDAY & FRIDAY: 10AM-4PM



So you've survived the flood in Deptford, but what do you do now?

How will you get around and where will you live when all the streets are under water?

Building a raft and shelter would be a great solution, as you make your way to the Survival Village, but you'll need to be creative as you'll only have the what's floating around you.

Come & join the **Secret Adventurers' Club** as we go on a watery adventure building big dens and mini survival rafts out of scrap materials.

→ DROP IN*

DEPTFORD-ON-SEA

JENNY EDBROOKE - ARTIST IN RESIDENCE**THE ALBANY - CAFÉ & GARDEN****THURSDAY 15th - FRIDAY 16th: 10AM-4PM**

As water levels rise, bridges and ladders must be built, boats must be crafted and the city on stilts needs to connect to the flood lands of **Deptford-On-Sea!**

Children can work with our very own set designer Dave Reading to construct a makeshift, floating city upon the seas of the **Albany**.



You can team up with **SMASHfestUK** resident artist **Jenny Edbrooke** for wood-work making and fixing, origami boat-making and raft craft.

Join us and become quick-thinking engineering specialists, creating architectural miracles that will save us all from the impending flood.

Sponsors: Arts Council England

→ DROP IN*

SURVIVAL VILLAGE & SPACE CAMP

SMASHfestUK & MIDDLESEX UNIVERSITY

THE ALBANY - GARDEN

THURSDAY & FRIDAY: 10AM-4PM



If disaster strikes, will you train for space travel or stay to rebuild society on Earth?

Learn **Earth Survival Skills** from our Engineers and Mathematicians (and discuss future engineering opportunities on our 'Year of Engineering' stand), and/or train at our **Space Camp - Stage 1** of our Living in Space Training. (*See Living in Space pages for further details*). Design and make rockets, create combustion pyramids, make your own asteroid and (on Thursday) join **Dr Lucinda Offer from the Royal Astronomical Society** to explore living on Mars



Bea Cruz: A Survival Kit extravaganza With the end of the world approaching, you have one Box and only a day for a life-saving decision to be made, it's all in your hands, start thinking now! What would you carry with you in order to survive? Don't think too hard, simply allow your imagination run wild!



Sponsors: Science & Technology Facilities Council, UK Space Agency, Royal Academy of Engineering, Middlesex University

→ DROP IN*

LIVING IN SPACE

SMASHfestUK & MIDDLESEX UNIVERSITY

THE ALBANY FOYER, CAFÉ, GARDEN, CORRIDOR, STUDIO - PLUS DEPTFORD LOUNGE

THURSDAY & FRIDAY: 10AM-4PM

SUITABLE FOR AGES 6+ | UNDER 13s TO BE SUPERVISED AT ALL TIMES



What if climate change has made the whole world uninhabitable? FLOODS, storms, droughts...dramatic environmental changes are occurring everywhere. Do we need to LEAVE EARTH?!

The **SMASHfestUK Space Agency** have started a **Space Colonist Team training programme**, preparing our future Space Scientists and Engineers to explore and colonise space. Deptford has become the first citizens space training facility!

Will you train for space travel or stay to rebuild society on Earth?

Find our registration team in the foyer and start your adventure towards outer space! Visit the garden to discover how to launch rockets and what makes them fly, then make sure to pay attention to how space sounds like. Ask for a sticker for each step of the training: only fully trained citizens will be sent into space.

FOYER: REGISTRATION: Space suit at the ready! Join our **Space Science and Engineering Team** - Asteroid Mining and Resource Section. Register for training, get your booklet and start collecting the stickers that will allow you to join the first space colony! Start your journey to the stars.

GARDEN:

TRAINING STAGE 1 - SPACE CAMP:

Do you have what it takes to be a space scientist and engineer? We don't have much time, Earth may not last much longer! Each explorer will learn what makes rockets fly, how to launch them and what asteroids are made up of, ready to begin Stage 2 of their training. *Will you accept the challenge?*

→ DROP IN*

LIVING IN SPACE

SMASHfestUK, MIDDLESEX UNIVERSITY & QUEEN MARY UNIVERSITY OF LONDON
THE ALBANY FOYER, CAFÉ, GARDEN, CORRIDOR, STUDIO
- PLUS DEPTFORD LOUNGE

THURSDAY & FRIDAY: 10AM-4PM



CAFE - SPACE TEAM TRAINING STAGE 2:

DIY Holograms

(See CAFE - LIVING IN SPACE on P32 for more details)

Sponsors: Science & Technology Facilities Council, UK Space Agency, Royal Academy of Engineering, Middlesex University

Space Coaster courtesy of **Monster Paw Games**. For the full virtual Coaster experience, visit www.monsterpawgames.com

CORRIDOR & STUDIO:

Journey through SPACE
(on a VR Simulator)!

You've completed your **Stage 1** and **2 Space Team training**, so it's time to leave Earth, first to the International Space Station corridor, then across the Solar System to our Asteroid Belt mining habitat.

Complete this final stage of the training, and **Baxter**, the space robot, will give you a selfie and sign you off as qualified!

To go to the Asteroids...and beyond!

On the journey, explore the sounds of space with research from **Queen Mary University of London**, have a play with our space-time-bending **gravity well table** and launch yourself into space using one of **Middlesex University's** 2 groundbreaking **Virtual Reality chairs - Motion Drive eXperience...** but remember: only fully trained Space Team can take the final jump!

→ DROP IN*

CAFÉ - LIVING IN SPACE

SMASHfestUK & MIDDLESEX UNIVERSITY

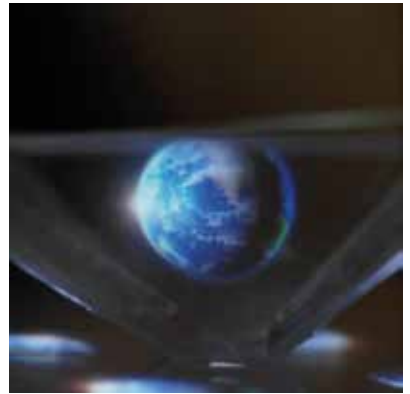
THE ALBANY CAFÉ

THURSDAY & FRIDAY: 10AM-4PM

CAFE - SPACE TEAM TRAINING - STAGE 2

DIY Holograms

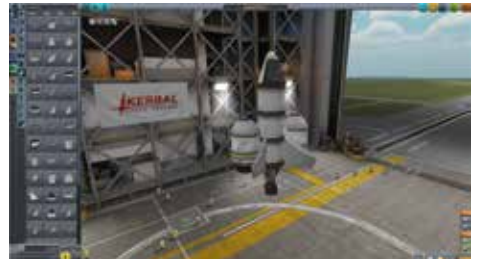
Become expert at Space Data Visualisation - it's time to make your own DIY hologram! Using just your mobile phone or one of our tablets, have a go at creating your very own hologram that will float in space and take it home with you!



ADVANCED ROCKETRY

If you've completed the **Space Team experience** and want to push your knowledge further...leave the earth behind with the **Middlesex University Mathematics** team & Kerbal Space Program (www.kerbaledu.com)

Discover how to fight gravity with delta-v, the currency of space travel, and why Tsiolkovsky's Rocket Equation means delta-v is hard to get. Design SMASHfestUK Rockets, reach for the stars, and see if yours will fly you there!



→ DROP IN*

DEPTFORD-ON-SEA

JENNY EDBROOKE & TEAM

THE ALBANY - GARDEN

SEE PAGE 28 FOR DETAILS

→ DROP IN*

PREPARE FOR FLOODING!

MIDDLESEX UNIVERSITY FLOOD HAZARD RESEARCH CENTRE

THE ALBANY - CAFÉ

FRIDAY: 10AM-4PM

Ever wondered what you can do to protect cities from disastrous floods? Wonder no more! Explore creative ways in which to protect their home and communities from flooding. Use your creativity, arts & crafts, science and engineering skills with researchers from Middlesex University's Flood Hazard Research Centre and from the international ESR PhD programme to build play-doh dams, rivers and barriers to protect Deptford!



Sponsors: SYSTEM-RISkproject, Middlesex University - 15 Early Stage Researchers from the SYSTEM-RISkproject (<https://system-risk.eu/>). This EU funded Marie-Sklodowska-Curie European Training Network adopts a large-scale system approach to flood risk assessment and management and adopts a framework for the training and career development of young researchers.

→ DROP IN*

THROUGH THE FLOOD

MIDDLESEX UNIVERSITY THEATRE ARTS

CAFE STAIRS & CORRIDOR TO YELLOW ROOM

THURSDAY & FRIDAY: 10AM-4PM



Middlesex University Theatre Arts students take you on a reverse journey through the a tidal flood wave, under a polluted sea, and back to the melting ice-caps and permafrost. **PART 1**

Climate change releases its visible and invisible dangers, in this series of immersive & semi-immersive installations!

Suitable for ALL ages.

Victor Ren: Personification of a flood

A costume installation that was inspired by a story told by a really lucky girl who went through a dramatic experience of a flood and survived.

James Johnson: Cascade

Cascade is an assemblage installation re-representing the after effects of floods on lower class communities.

Dan Brennan: Water and Waste

An installation showing the consequences of flooding and pollution on sea-life.

Shu Olteanu: Jelly Fish

Sound installation inspired by aquatic life.



→ DROP IN*

THROUGH THE FLOOD

MIDDLESEX UNIVERSITY THEATRE ARTS

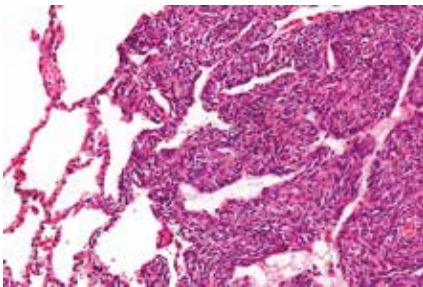
THE ALBANY - YELLOW ROOM

THURSDAY & FRIDAY: 10AM-4PM

Middlesex University Theatre Arts students take you on a reverse journey through the a tidal flood wave, under a polluted sea, and back to the melting ide-caps and permafrost. **PART 2**

Climate change releases its visible and invisible dangers, in this series of immersive & semi-immersive installations!

Suitable for ALL ages.



Maggie Slabonova: Hidden in ice

What would happen if we were suddenly exposed to deadly bacteria and viruses that have been absent for thousands of years, or that we have never metbefore? We may be about to find out. Climate change is melting permafrost soils that have been frozen for thousands of years, and as the soils melt they are releasing ancient viruses and bacteria that, having lain dormant, are springing back to life.



Justine Tabu: Melting Antarctica

The biggest cause of floods - melting ice in Antarctica. This installation will bring the audience to the bottom of the globe to enjoy floating on melting pieces of ice.

→ DROP IN*

MAKING WAVES

SINEAD KEMPLEY

THE ALBANY - BLUE ROOM

THURSDAY & FRIDAY: 10AM-4PM

Local artist **Sinead Kempley** has created a sculpture of a tsunami.

Currently it is a blank canvas and she needs you to bring it to life. Use a variety of building materials to add texture and audio recording equipment and touch sensors to create interactive sound and help Sinead make the wave roar!



→ DROP IN*

Sponsors: Arts Council England

SSFX Space Sound Effects

QUEEN MARY UNIVERSITY OF LONDON - SCHOOL OF PHYSICS & ASTRONOMY

THE ALBANY - BLUE ROOM

THURSDAY & FRIDAY: 10AM-4PM

Have you ever heard vibrations from the depths of space? These short-films from Queen Mary University's SSFX Short Film Festival will showcase how filmmakers used sounds from space in a creative and original way. Just put your headphones on and press play!



TICKETED

I SURVIVED A REAL TSUNAMI

RUSSELL PETERS

THE ALBANY - ORANGE ROOM

FRIDAY 16TH: 1PM-2PM

On 26 December 2004, a massive tsunami in the Indian Ocean killed a quarter of a million people and made 2 million people homeless .

Russell Peters was enjoying a day on the beach with his family in Thailand when it hit. Hear Russell’s first hand account, and how his understanding the physics of waves helped him save his family’s lives.

DROP IN*

BUILD THE LENOX! & NMM SUBMERGED

THE LENOX PROJECT & THE NATIONAL MARITIME MUSEUM

THE ALBANY - ORANGE ROOM

THURSDAY & FRIDAY: 10AM-4PM

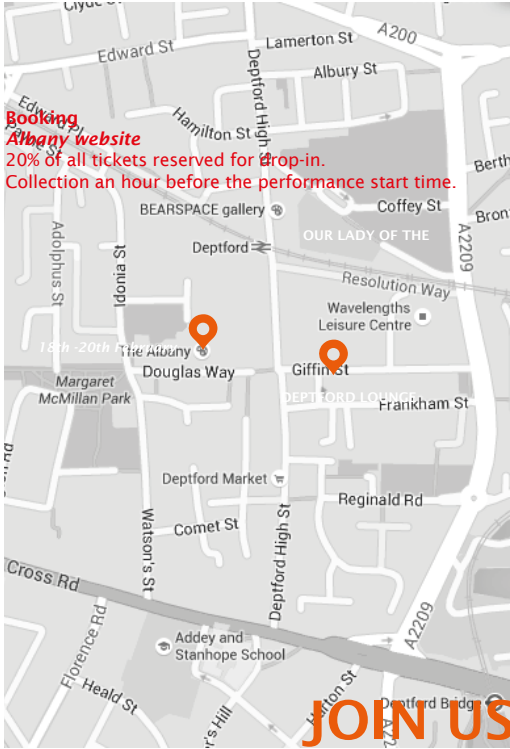


Join the **National Maritime Museum** after the flood, how will you survive in a watery world? Looking to submarines and diving bells be inspired by the Museum’s collection to create your own functioning submersibles and learn about the science behind them!.

Build the Lenox - 500 years ago Deptford Dockyard was one of the most important places in the world for shipbuilding? **The Lenox Project** is a local charity aiming to build and launch a full-size replica of the Lenox, the 1st of 30 warships built by King Charles II, and bring shipbuilding back to Deptford! Come and learn about the royal dockyard history, find out how heavy a real life cannonball is, and build and test your own boat to survive a ferocious flood.



HOW TO GET THERE



LEAD PARTNERS



ASSOCIATE PARTNER



2018 LEAD FUNDERS



ADDITIONAL FUNDERS



PRINT SPONSOR



SMASHfestUK couldn't do what we do - FOR FREE! - without the amazing support of our visionary partners and funders. Around SMASHfestUK we've created a new way of bringing together funders, universities, community groups, schools, industry and cultural institutions and connecting them meaningfully with neglected communities. We've been touring the UK through 2017, building new collaborations and creating positive impact with underserved groups and underrepresented people. WE THANK YOU ALL! AND HOPE YOU'LL CONTINUE WITH US ON OUR JOURNEY - FIGHTING FOR SOCIAL INCLUSION AND EQUITABLE OPPORTUNITIES FOR ALL in STEM and the Arts.

SMASHfestUK: A festival, a big story... an ADVENTURE!

WINNER: 2017 The ENGINEER - Collaborate to Innovate Award
Young Innovator - Engagement Initiative

WINNER: 2016 NCCPE STEM ENGAGE Award
the UK HE 'public engagement with research' award

Our mission:

“A world in which everyone holds the power to employ
science & creativity for the good of humanity”^s



@SMASHfestUK
info@SMASHfestUK.com
SMASHfestUK.com