

Identifying the Knowledge Base in Social Work Practice with Traumatic Brain Injury

Mantell A, Simpson G.K., Jones K, Strandberg
T, Simonson P, Vungkhanching M

INSWIABI

Background

Research question:

What is the extent of the formal knowledge base produced by social workers on TBI?

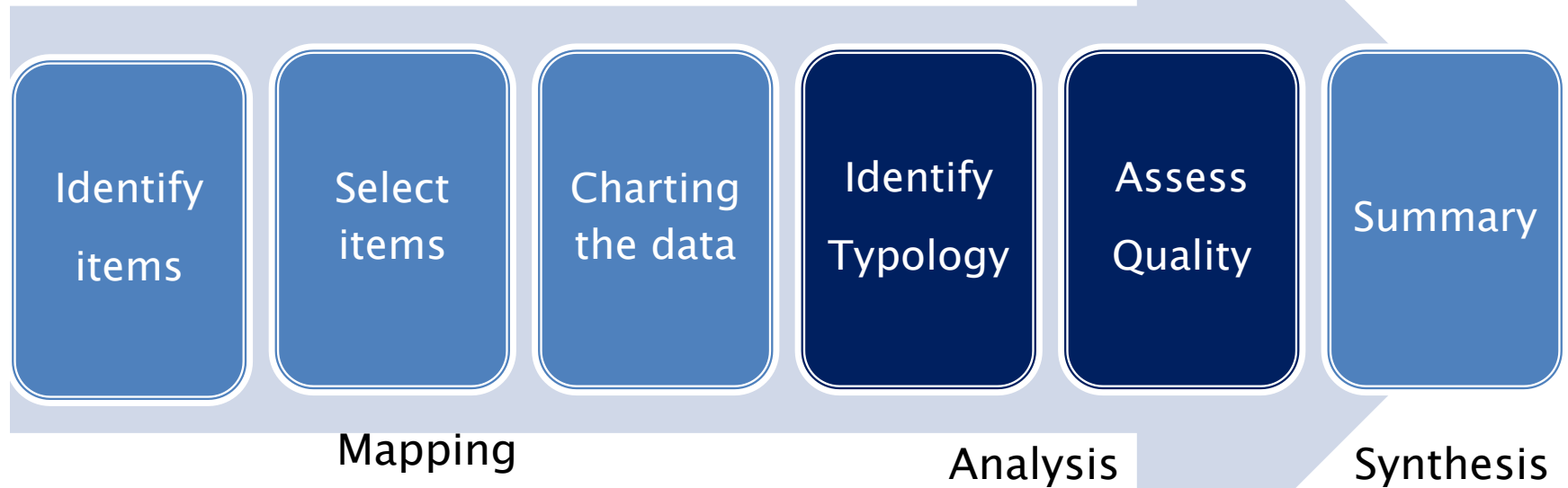
Aims

- i. Identify the breadth of knowledge that social workers have generated.**
- ii. Identify the types of intervention employed.**
- iii. To evaluate the quality of those studies.**

Objective:

To map the current knowledge base for social workers in TBI.

Methodology – A Scoping Study (adapted from Arksey and O'Malley 2005 and Coren and Fisher 2006)



Aim (i) Identifying and selecting the literature

Stage	Description
Parameters of the search	Defining inclusion and exclusion criteria and search terms
Systematic search of academic databases, journals and search engines	Preliminary and full text screening – identified 28 items
Derivative searches	Author, iterative searches of biographies and consultancy identified 45 items

Charting results: Geographical distribution

Country	Frequency	Percentage
Australia	27	37
USA	27	37
UK	9	12.3
India	5	6.8
Canada	3	4.1
Israel	1	1.4
South Africa	1	1.4
Total	73	100

Charting results: Distribution by format

Source	Number
Journals (rehabilitation)	31
Journals (social work)	19
Journals (other)	13
Book	1
Chapters	9
Total	73

Charting results: Chronological distribution

Year	No. of publications
1970 - 1979	1
1980 - 1989	13
1990 - 1999	17
2000 - 2009	42
Total	73

Charting results: Focus of practice

Focus of practice	Number
Practice with families	19
Community integration	18
Health policy	17
Behavioural problems	7
Psychological adjustment	2
Generic	10
Total	73

Typology (after Turner–Stokes *et al* 2006)

Empirical studies	38	9 experimental, 29 observational studies (quantitative 33, qualitative 5, mixed method 1)
Literature reviews	4	4 narrative reviews
Practice approaches	23	Descriptive accounts, with practice recommendations, but lack supporting evidence
Service descriptions	3	Supported employment scheme; outline of SW service department
Insider accounts	1	SW a/c of sustaining an TBI
Policy Analysis	4	Inequity in referral patterns from hospital to acute rehabilitation; evaluation of initiative to move younger TBI clients out of aged care nursing homes
Total	73	

Evaluating the quality of the Literature

1

- Empirical (experimental) studies(9)
- (Turner–stokes *et al.* (2006) rating scale)

2

- Literature reviews (4)
- (Turner–stokes *et al.* (2006) rating scale)

3

- Empirical (observational) studies (29)
- (Turner–stokes *et al.* (2006) rating scale)

4

- Practice/Expert accounts (23)
- (Credibility of study)

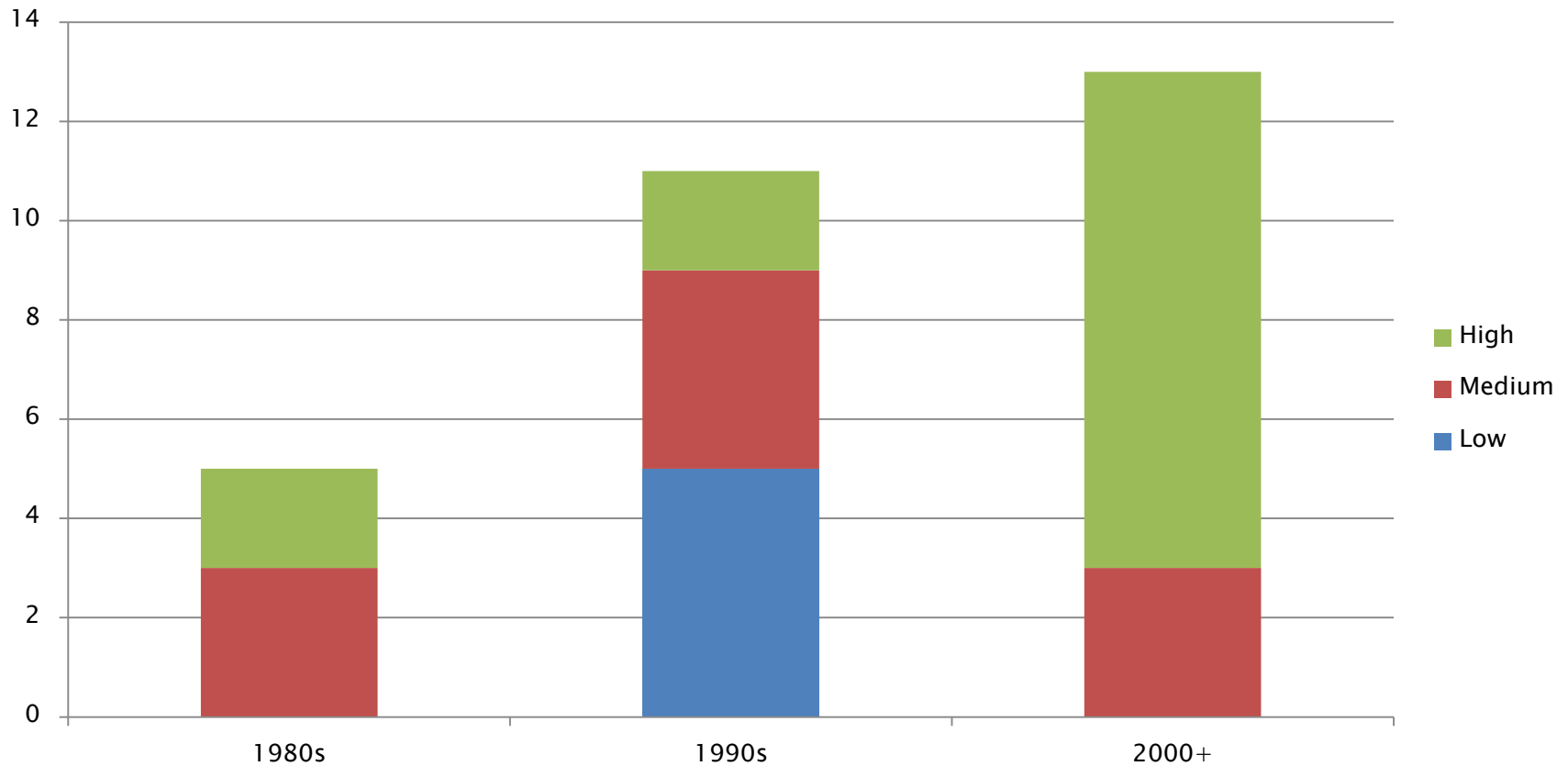
1 st Author (Year)	Focus	Intervention	Delivery mode	Rating
Albert 2002	Family	Adjustment counselling	Phone-based follow up	5/10
Brown 1999	Family	Adjustment counselling	Group work	8/10
Dahlberg 2007	Community integration	Social skills training	Group work	9/10
Damianakis 2008	Family	Adjustment counselling	Telehealth group work	5/10
Egan 2005	Community Integration	Internet skills training	Each person linked with tutor	7/10
Rowlands 2001	Community integration	Build social networks	Circle of support	9/10
Simpson 2004	Community integration	Transitional living program	X-D Inpatient Residential	9/10
Simpson 2003	Sexuality	Behavioural Modification	Individual face to face	8/10
Vungkhanching 2006	Substance misuse	Skills based counselling	Group work	9/10

Aim (iii) Quality of literature reviews

Author	Year	Title	Rating (Turner-Stokes <i>et al</i> 2006)
Bishop	2006	Family needs after TBI	1 / 5
Degeneffe	2001	Family caregiving and TBI	2 / 5
Resnick	1994	Head injury: Review of an international issue	1 / 5
Rowlands	2000	Understanding the implications of social support and friendship	2 / 5

Quality of observational studies

Quality ratings of observational studies by decade n=29




Credibility of expert accounts

- ▶ This stage is still ongoing.
- ▶ The articles will be rated by:
 - a) Understanding of TBI
 - b) Appropriateness of cited literature.
 - c) Percentage of citations from the last 10 years.

Discussion

- 1. Aim - To identify the breadth of knowledge that social workers have generated.**
 - ✓ Identified 73 articles, chapters and books.
- 2. Aim – To Identify the types of intervention employed.**
 - ✓ 7 types of intervention have been identified from the experimental studies.
- 3. Aim - To evaluate the quality of those studies.**
 - ✓ Of the nine experimental studies, six rated 8 or 9/10.

Conclusion

- ▶ There has been a significant increase in publishing in the field.
 - ▶ The predominantly descriptive articles highlight areas of interest for social work practitioners.
 - ▶ The 9 experimental studies provide examples of intervention strategies that work.
 - ▶ Most importantly, these high quality studies provide exemplars for further development of social work's knowledge base.
- 

Thank you for listening

- ▶ Any questions?
- ▶ Contact Andy Mantell at:
 - ▶ A.Mantell@chi.ac.uk
- ▶ BISWG Website :
 - ▶ <http://www.biswg.co.uk>
- ▶ INSWABI website:
 - ▶ <http://www.biswg.co.uk/html/inswabi.html>

References

- ▶ Anderson S, Allen P, Peckham S, Goodwin N (2008) Asking the right questions: scoping studies in the commissioning of research on the organisation and delivery of health services. *Health Res Policy Sys*, 6:7.
- ▶ Arksey,H & O'Malley L (2005): Scoping studies: towards a methodological framework, *International Journal of Social Research Methodology*, 8:1, 19–32
- ▶ Coren, E and Fisher, M (2006) *The conduct of systematic research reviews for SCIE knowledge reviews*. Available from www.scie.org.uk
- ▶ Davis, K , Drey N, Gould D (2009) What are scoping studies? A review of the nursing literature. *International Journal of Nursing Studies* 46, 1386–1400
- ▶ Levac, D, Colquhoun, H and O'Brien, K (2010) Scoping Studies:Advancing the methodology. *Implementation Science* 5 (69).
- ▶ Levin, H 2012.Key note speech. Ninth World Congress on Brain Injury. International brain Injury Association , Edinburgh, 21st March–24th March 2012.
- ▶ Turner–Stokes, L, Harding, R, Sergeant, J, Lupton C, and McPherson K (2006) Generating the evidence base for the National Service Framework for Long Term Conditions: a new research typology. In *Clinical Medicine*, 6 (1) pp 91–97.
- ▶ Tate, R and Douglas J (2011) Use of Reporting Guidelines in Scientific Writing: PRISMA, CONSORT, STROBE, STARD and Other Resources. In *Brain Impairment*, 12 (1) pp. 1–21.
- ▶ von Elm, E., Altman, D.G., Egger, M., Pocock, S.J., Gøtzsche, P.C., Vandenbroucke, J.P., for the STROBE Initiative. (2007). The strengthening the reporting of observational studies in epidemiology (STROBE) statement: Guidelines for reporting observational studies. *The Lancet*, 370, 1453–1457.
- ▶ Whyte J, Hart T. It's more than a black box; It's a Russian Doll: Defining rehabilitation treatments. *American Journal of Physical Medicine and Rehabilitation* 2003;82:639–652.