



Increasing paddy yields and improving farm management: results from participatory experiments with good agricultural practices (GAP) in Tanzania

Kalimuthu Senthilkumar¹ · Bonaventure J. Tesha¹ · Jerome Mghase² · Jonne Rodenburg^{3,4}

Received: 3 October 2016 / Revised: 11 June 2018 / Accepted: 23 July 2018
© The Author(s) 2018

Abstract

Rice is an increasingly important commodity in sub-Saharan Africa. In Tanzania, the rice yield gap is as high as 87%, due to a combination of production constraints and sub-optimal crop management. Reducing this yield gap may be partly achieved through the introduction and dissemination of good agricultural practices (GAP). We conducted 18 farmer-managed on-farm trials in Tanzania, to test a set of GAP components against conventional farmers' practices (FP) for two consecutive growing seasons in 2013 and 2014. The objectives were: (1) to understand farmers' capabilities in implementing GAP; (2) to acquire better insights into the merits, relevance and suitability of individual GAP components; and (3) to provide a case study showing that exposure to good practices combined with the farmers' own experimentations can serve to improve and, trigger a positive change in the participating farmers' crop management. Compared to the farmers' own practices, average yield increases of 1 t paddy ha⁻¹ in 2013 and 2.7 t ha⁻¹ in 2014 were achieved when following GAP. These yield advantages were mainly obtained by a higher panicle number, improved harvest index and improved weed control. Farmers experienced difficulties with land levelling, planting or sowing in lines and using rotary weeders, but they were convinced that these technologies are important to boost their rice yields. The case of Tanzania shows that paddy yields can be substantially improved by GAP and that adoption of GAP by smallholder rice farmers can be triggered by stimulating experimentations with such practices on their own farms.

Keywords Integrated crop management · Farmers' practices · Subsistence farmers · Food security · Sub-Saharan Africa

Introduction

Rice (*Oryza sativa* and *O. glaberrima*) is an increasingly important staple food in sub-Saharan Africa (SSA). Tanzania is the fifth most important rice-producing country in SSA in terms of rice area with 0.94 M ha, and the third in terms of annual paddy production with 1.13 M t (Diagne

et al. 2013). Rice yields in Tanzania are generally low. The estimated current average yields in Tanzania range from 1.1 t ha⁻¹ under rainfed lowland conditions to 1.4 t ha⁻¹ under irrigated conditions (Diagne et al. 2013), while potential yields for water-unlimited lowland rice range from 10 to 11 t ha⁻¹ (GYGA 2015). With rice yield gaps in SSA ranging from 30 to 90% (van Oort et al. 2015), Tanzania is among the countries with the largest difference between the potential or water-limited yield and the actual yield. With such low yields, smallholder rice farmers in Tanzania, who grow rice both for their own subsistence and for the (local) market, are often stuck in a poverty trap. The sub-optimal rice productivity is caused by a myriad of production constraints and sub-optimal crop management (Nhamo et al. 2014). The current rice production practices of smallholder farmers in Tanzania include soil tillage using hand-held hoes and the use of low-yielding local varieties. The crop is established by scatter transplanting or broadcast sowing, after crop and weed residue removal and burning. Farmers do not, or not

✉ Kalimuthu Senthilkumar
k.senthilkumar@cgiar.org

¹ Africa Rice Center (AfricaRice), P.O. Box 33581, Dar es Salaam, Tanzania
² Kilombero Agricultural Research and Training Institute (KATRIN), P.O. Box 405, Ifakara, Tanzania
³ Africa Rice Center (AfricaRice), 01 BP 4029, Abidjan, Côte d'Ivoire
⁴ Natural Resources Institute (NRI), University of Greenwich, Chatham Maritime, ME4 4TB Kent, UK

sufficiently, bund or level their fields, causing sub-optimal water management, and apply little or no fertilisers. Weeding is done by hand with a sub-optimal timing.

Based on previous experiences in West Africa (Haefele et al. 2000; Becker and Johnson 2001; Poussin et al. 2006), we aim to increase farmers' rice yields by introducing good agricultural practices (GAP), an integrated set of recommended crop, soil, water and weed management practices (Ceesay 2010; Nhamo et al. 2014). GAP for lowland rice may include, but is not limited to, practices such as animal or motorised traction for fine tillage, proper bunding and levelling, the use of improved varieties and certified seeds, sowing or transplanting in lines, application of judicious doses of composite fertilisers, and optimally timed weed control using proper herbicide dosages followed by weeding with mechanical weeders (Becker et al. 2003; Wopereis et al. 2007; Rodenburg and Johnson 2009).

Like other parts of SSA, Tanzania has large areas of wetlands with favourable climatic conditions for rice production. The use of GAP has recently been proposed as an important component in the strategy towards boosting rice yields (Nhamo et al. 2014) and, more specifically, for the sustainable and efficient use of Africa's wetland potential (Rodenburg et al. 2014). One such wetland for which the full potential has not yet been exploited is the Kilombero Valley in Tanzania.

The objectives of our study were: (1) to compare a set of GAP to conventional farmers' practices (FP) to quantify the possible yield advantages with GAP; (2) to understand farmers' capabilities in implementing GAP on their farms and to obtain their opinions on GAP component technologies compared to conventional practices; and (3) to provide a case study showing that on-farm farmer participatory experiments with such practices can serve to improve and prioritise rice-farming extension efforts and, trigger a positive change in the participating farmers' crop management. For this purpose, a set of farmer-managed and researcher-supported on-farm trials were conducted in representative irrigated and rainfed lowland fields for two consecutive years. Farm surveys were conducted to evaluate farmers' perceptions and experiences with the improved practices and to investigate the likelihood that proposed interventions could change current farmer practices in the long run. This specific case of the Kilombero Valley is discussed within the broader context of rice sector development in sub-Saharan Africa.

Materials and methods

On-farm trial set-up

A total of 18 on-farm trials were conducted during the main rice cropping season (February–June) in 2013 and 2014 in

six villages in the Kilombero Valley, Tanzania (the villages of Mkula and Msufini, Mkula ward; the villages of Kisawasawa and Ichonde, Kisawasawa ward; and the villages of Idete and Namwawala, Idete ward), roughly between 8°11'S–36°15'E and 7°52'S–36°53'E (Fig. 1). The Kilombero Valley has an area of 7969 km² and a catchment area of about 40,000 km² (Felister et al. 2011) and generates more than 30% of Tanzania's annual domestic rice production (Kilimo Trust 2014).

The trials, comparing two rice production methods (GAP and FP), were conducted by three representative volunteer farmers per village (3 farmers × 6 villages = 18 trials). Participating farmers were selected by the local agricultural district officer and the respective village chief. The specific aim was to conduct trials that were (1) representative in terms of production environment, farm size, resource endowment and yield levels, (2) representative and balanced in terms of gender, and (3) that involved volunteer farmers with a keen interest in participating in the study. Quantitative data (i.e. yield and yield attributes) concerning the performance of each method were collected from each of the farms, while farmers were interviewed to substantiate their agronomic perceptions concerning the performance and feasibility of the GAP methods and components. A two-day participatory training workshop for the farmers was organised before the start of each season to introduce the farmers to a set of GAP and to train them on the implementation of the practices. Among these 18 farmers, eight had access to irrigation water and already used transplanting. We refer to them below as the 'irrigated-rice farmers'. The remaining ten farmers were dependent on rainfall and used direct sowing. We refer to them below as the 'rainfed-rice farmers'. The gender ratio (M:F) among this group of participating farmers was 1:1, reflecting the gender ratio of the rice farmers in this area. Each farmer was asked to select two adjacent plots in his/her field, one for testing good agricultural practices (GAP) and the other for implementing their usual practices (FP). Farmers' individual plot sizes per practice (GAP or FP) ranged between 358 and 2173 m² in 2013, and between 741 and 2173 m² in 2014, respectively; the two plots of an individual farmer were approximately equal in size in both years. Once every 2 weeks and at the time of the actual implementation of an important intervention, researchers and enumerators monitored the farmers' implementation of GAP. For the first season, each farmer was provided with a total budget of US \$100 to cover any additional input costs for GAP; in the second season, after consulting with farmers and extension services, this amount was raised to US \$150. The idea behind this was to leave farmers with a free choice of GAP components to be implemented and to allow them to assess the different components not only on their merits for crop yields but also on their monetary costs. Farmers received logistic assistance for the acquisition of certified seeds and

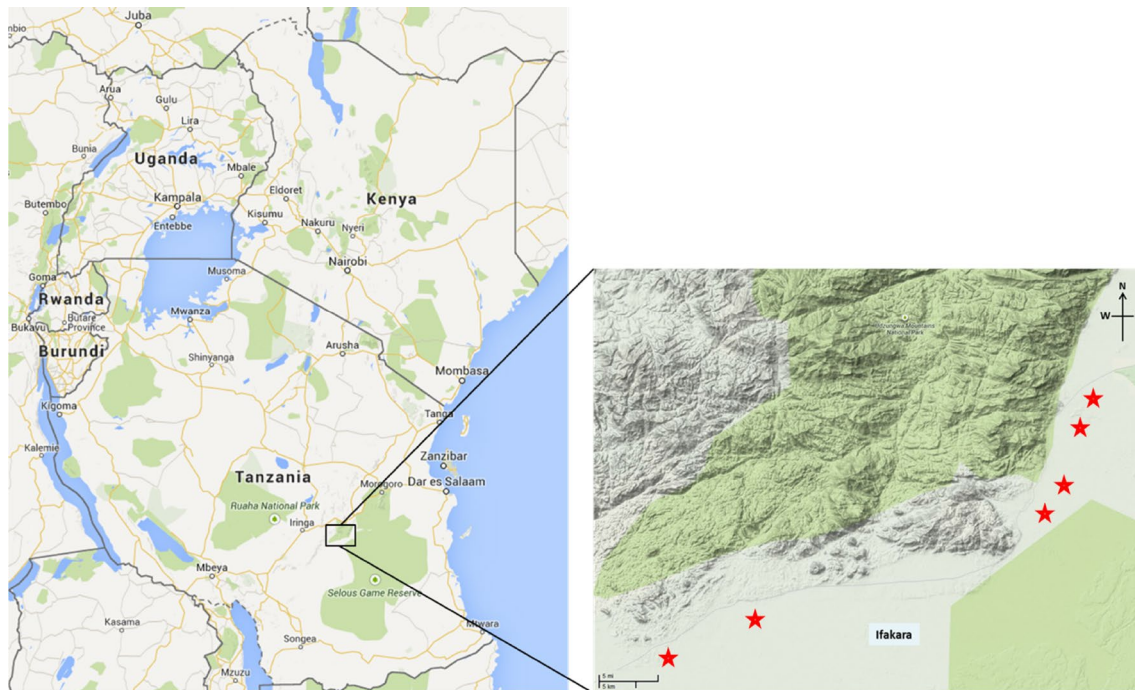


Fig. 1 Map showing the location of the 18 on-farm trials in the Kilombero Valley, Tanzania. Each star represents a village and three on-farm trials were conducted in each village, both in 2013 and 2014

inorganic fertilisers since they were not readily available on the local markets. Plant-protection measures against pests and diseases were left to the farmers' discretion.

The list of GAP component technologies introduced to the farmers along with their conventional rice cultivation practices (FP) is presented in Table 1. The GAP component technologies were proposed to farmers based on existing proven technologies (Becker and Johnson 2001; Nwite et al. 2008). Land clearing was included as a GAP to avoid shrubs and tree trunks in the field so as to facilitate tillage and subsequent operations. Tillage with animals or motorised traction, bunding, levelling and puddling, line planting or line sowing, thinning and gap filling are technologies that have been proven to increase rice yields. These practices provide a homogeneous crop with an optimal use of the available space and favourable conditions for crop and weed management operations (Becker et al. 2003; Wopereis et al. 2007; Rodenburg and Johnson 2009).

For the fertiliser application rate proposed under GAP, the recommendations of the regional *Rice Research Centre of Excellence*, the Kilombero Agricultural Research and Training Institute (KATRIN), were followed: N:P₂O₅ at 80:40 kg ha⁻¹. All P fertiliser was applied as basal, whereas N was split into three different applications, i.e. 16 kg N ha⁻¹ as basal, 32 kg N ha⁻¹ at 20 days after transplanting (DAT; for irrigated rice) or days after sowing (DAS; for rainfed rice), and 32 kg N ha⁻¹ at 40 DAT/DAS. This rate and timing was based on the prevailing soil fertility status and previous

crop responses to applied nutrients (Mowo et al. 1993). Nitrogen and phosphorus fertilisers were applied in the form of urea and di-ammonium phosphate (DAP), respectively. Application of potassium fertiliser was not recommended following unavailability on the local market.

Weed management practices under GAP consisted of the use of the well-timed pre-emergence herbicide application of oxadiazon (0.5–0.75 kg a.i. ha⁻¹ at 4–5 DAT), combined with weeding interventions using mechanical weeders at 21 and 42 DAT/DAS. The common practice used by farmers in Kilombero involves hand-weeding two times during the season and, occasionally, the application of post-emergence herbicides. Hand-weeding is very labour intensive (Lodin-Bergman et al. 2012; Ogwuike et al. 2014). Due to labour shortages, hand-weeding is often incomplete or untimely, resulting in large yield losses (Rodenburg and Johnson 2009; Rodenburg et al. 2011; Nhamo et al. 2014). Moreover, very few farmers use herbicides in a timely and correct manner (Rodenburg and Johnson 2009), resulting in sub-optimal weed control or crop damage and concomitant yield reductions. The mechanical weeder proposed under GAP offers an effective and labour-saving alternative to hand-weeding and post-emergence herbicides (Krupnik et al. 2012; Rodenburg et al. 2015). Three types of mechanical weeders (cono weeder, straight spike floating weeder and twisted spike floating weeder) were supplied to all the farmers to be used in the GAP plots.

Table 1 List of GAP component technologies introduced to the two groups of farmers (irrigated- and rainfed-rice farmers) along with their conventional rice cultivation practices used in the on-farm trials in Kilombero

Management practice	Introduced GAP component technologies		Conventional farmers' practices (FP)	
	Irrigated group	Rainfed group	Irrigated group	Rainfed group
Land clearing	Complete clearing of vegetation using a machete	Complete clearing of vegetation using a machete	Using a machete	Using a machete/burning
Tillage	Using animal or motorised traction	Using animal or motorised traction	Using a hand hoe	Using a hand hoe
Bunding	Yes	Yes	Yes	No
Preflooding	Yes	No	Yes	No
Puddling	Using a power tiller	No	Power tiller/hand hoe	No
Levelling	Using a wooden blank/hand hoe	Using a wooden blank/hand hoe	Using a hand hoe	No
Cultivar choice	Certified seeds: SARO5	Certified seeds: SARO5	Farm seeds of local varieties (Kisekese, Kalamata & Super India)	Farm seeds of local varieties (Kisekese, Kalamata & Super India)
Nursery sowing	Yes, using fertiliser application (urea @ 100 gm ⁻²)	No	Yes, conventional, no fertiliser application	No
Planting method	Transplanting in lines (20×20 cm) at 21 DAS	Direct sowing in lines (20×20 cm)	Scatter planting at 18–21 DAS	Broadcasting
Thinning/gap filling	After 5–10 DAT	After 10–20 DAS	Rarely	Rarely
Fertiliser application	Recommended rate of N:P ₂ O ₅ @ 80:40 kg ha ⁻¹ . At basal N:P ₂ O ₅ @ 16:40 kg ha ⁻¹ , and remaining 64 kg N in two splits @ 32 kg ha ⁻¹ at 20 and 40 DAT	Recommended rate of N:P ₂ O ₅ @ 80:40 kg ha ⁻¹ . At basal N:P ₂ O ₅ @ 16:40 kg ha ⁻¹ , and remaining 64 kg N in two splits @ 32 kg ha ⁻¹ at 20 and 40 DAS	Some of them apply phosphate rock (28–30% P ₂ O ₅) @ 125 kg ha ⁻¹ and urea @ 62.5 kg ha ⁻¹	Applied upon observation of leaf yellowing @ 1–2 kg urea in the affected area
Herbicide application	Using proper dose at proper time (Pre-emergence application of Oxadiazon (Ronstar) at 4–5 DAT @ 0.5–0.75 kg a.i. ha ⁻¹)	Using proper dose at proper time (Pre-emergence application of Oxadiazon (Ronstar) at 4–5 DAS @ 0.5–0.75 kg a.i. ha ⁻¹)	Some farmers, using post-emergence application of 2,4-D	Some farmers, using post-emergence application of 2,4-D
Weeding	Rotary weeding between rows twice, at 20 and 40 DAT, followed by hand-weeding in the row	Rotary weeding between rows twice, at 20 and 40 DAS, followed by hand-weeding in the row	Hand-weeding twice in a season	Hand-weeding twice in a season
Flooding	Continuous until maturity	Depends on rainfall	Continuous up to harvest	Depends on rainfall
Drainage	@ 10 days before harvest	@ 10 days before harvest (if flooded and if possible)	Rarely	No

DAT days after transplanting, DAS days after sowing, GAP good agricultural practices (Becker et al. 2003; Wopereis et al. 2007; Rodenburg and Johnson 2009)

The certified seeds of the popular improved variety, SARO5, were used in all the GAP plots, whereas in the FP plots, farmers used local varieties such as Kisekese, Kalamata and Super India. SARO5 is an improved, medium duration (120 days), semi-aromatic, high-yielding variety that is gaining popularity among Kilombero farmers (Nhamo et al. 2014).

Soil samples were taken from both GAP ($n = 18$) and FP ($n = 18$) plots before (at sowing/transplanting) and after each rice-growing season, with the soil samplings after season 1 and before season 2 combined ($n = 3$). Soils were analysed for texture, macro- and micronutrients and their suitability for rice cultivation. This resulted in a total of 108 soil samples. The soil analysis was done by the Crop Nutrition Laboratory Services (CROPNUTS), ISO 17025 accredited, Nairobi, Kenya. The analytical methods used to analyse the soil samples are presented in Table 2.

Measurement of yield and yield attributes

Within each GAP and FP plot, two harvest areas of 4 m² (2 × 2 m) were marked for yield assessments by the researchers. Rice panicles from these two 4-m² harvest areas were harvested and threshed and grains were winnowed to remove empty spikelets. The retrieved rice grain weights were assessed with a digital weighing scale, and grain moisture contents were assessed at the same time using a digital grain moisture meter (SATAKE Moistex Model SS-7) to correct for differences in moisture content. Rice grain yields from the two harvest areas were then averaged and expressed in t ha⁻¹ at 14% moisture content. Within each harvest area, a 1-m² area (1 × 1 m) was earmarked for detailed observations on the following yield-attributing characteristics: number of hills, tiller number, panicle number, plant height, 1000-grain weight, percentage of filled grains and harvest index. The final values were reached by averaging the data from the two 1-m² areas per plot. The percentage of filled grains and harvest

index were assessed in 2014 only by harvesting all the hills from the two 1-m² harvest areas. In order to evaluate the weed pressure after implementing the weeding operations in both GAP and FP plots, weed biomass (g m⁻²) was assessed by collecting all the weeds from the same two 1-m² areas just before harvest and oven-drying the samples at 70 °C for 48 h. In addition to the yield assessment from the two 4-m² harvest areas conducted by the researchers, the farmers' harvested yields from the entire GAP and FP plots were estimated during the farmer surveys ('Farm surveys' section). Farmers were asked to express the harvested yield in number of bags, which was then converted to t ha⁻¹ using mean weight of a rice bag (150 kg bag⁻¹) for the study site. Furthermore, the neighbouring farmers were asked to anticipate the yields from the GAP and FP plots based on visual appearances during the farmer field days ('Farmer field days' section) and presented in t ha⁻¹. The yield, yield attributes and dry weed biomass data for the GAP and FP practices were subjected to analysis of variance (ANOVA) using XLSTAT (Addinsoft 2007) followed by a comparison of means with Fisher's protected LSD test at 5% to analyse differences between the two principal set of practices. Pearson correlation analysis was performed to show the relationship between yield and panicle number. A multiple regression analysis was performed to identify the impact of individual GAP component technologies on researcher-measured yield in GAP plots based on their use or non-use by the participating farmers. This analysis was conducted for irrigated ($n = 17$) and rainfed ($n = 19$) farmers separately but combining the data for both 2013 and 2014 seasons. The GAP component technologies used by all the farmers (e.g. land clearing, tillage, use of improved varieties) were excluded from the analysis as their impact on yield were the same in principle. Only the GAP component technologies that were used by some farmers while not used by others were included in the analysis. For each GAP, a qualitative value of '1'

Table 2 Analytical methods used to analyse the soil samples

Parameter	Analytical method*
Soil pH	Potentiometric (soil:water 1:2)
Soil EC	Potentiometric (soil:water 1:2)
Soil Ca, Mg, K, Na, Mn, Fe, Cu, Mo, B, Zn, S	Atomic emission spectrometry (ICP) (Mehlich 3—Diluted ammonium fluoride and ammonium nitrate)
Soil available Phosphorus (P Olsen)	Colorimetric (Sodium bicarbonate Extractant. Complex formation of ammonium molybdate)
Soil Nitrogen	Colorimetric (UV-Vis)—Kjeldahl digestion
Soil Carbon	Walkley and Black method (Colorimetric)—Wet oxidation by acidified dichromate in the presence of sulphuric acid
Soil texture (% Clay, Silt, Sand)	Hydrometer method

*For detailed description of analytical methods, refer to Pansu and Gautheyrou (2007) and van Ranst et al. (1999)

is given if used and ‘2’ if not used and the analysis was performed using XLSTAT.

Farm surveys

In both seasons, two farmer surveys were conducted during the course of the trials using predesigned questionnaires. The aim of the first farmer survey was to record which of the GAP component technologies the farmers actually implemented, and how. Farmers’ own practices concerning the use of locally available organic manures were also recorded during this survey. The second farmer survey was conducted at the end of the trials and focused on farmers’ opinions about GAP component technologies such as their preference (‘like’, ‘not like’ and ‘partly like’), importance (‘important’, ‘not important’ and ‘not sure’), workability (‘easy’, ‘difficult’ and ‘no difference’) and possible use by the farmers in the future (‘yes’, ‘no’ and ‘not sure’).

Farmer field days

In both years, just before rice harvest, six farmer field days were conducted by inviting an additional 15 farmers per field day from each village (a total of 90 farmers per year) to visit the trial plots of that specific village. The main

objectives of the farmer field days were to create awareness of GAP among the neighbouring farmers in the village and to obtain their opinions, as well as those of the farmers who implemented the trials. The visiting farmers were given an introduction to the on-farm trials and the technologies being introduced into the GAP plots. They were asked to predict the yields from the GAP and FP plots based on visual appearances. Farmers were also asked about the GAP component technologies that they learned during the farmer field days and their intention and willingness to implement them and to take part in similar on-farm trials in the future, as a concrete token of their interest in GAP and in improving their own crop management practices.

Results and discussion

Soil fertility status

The soil fertility status of the trial plots (both GAP and FP) was generally poor (Table 3). The mean soil texture composition was 70% sand, 20% clay and 10% silt. When compared with the critical levels below which nutrient deficiency for individual nutrients occur for rice production (Fairhurst et al. 2007), we found that the N, P, K, Mg, S and B are below the

Table 3 Soil nutrient status of the farmers’ fields where the on-farm trials were conducted. A total of 108 samples were analysed during the 2-year period of the on-farm trials (2 treatments \times 18 fields \times 3 times sampling)

Parameter	Unit	<i>n</i>	Minimum	Maximum	Average	% samples below the critical soil nutrient levels for rice	Critical soil nutrient levels for rice
pH	–	108	5.21	6.95	5.90	–	–
EC	$\mu\text{S}/\text{cm}$	108	14.00	125.00	44.39	–	–
C.E.C	$\text{meq}/100\text{ g}$	108	3.76	30.50	13.11	–	–
C	%	108	1.28	3.22	2.05	–	–
N	%	108	0.12	0.21	0.16	60	<0.2
P(Olsen)	ppm	108	2.33	40.60	10.43	14	<5
K	ppm	108	18.30	277.00	83.73	27	<58.5
Ca	ppm	108	376.00	3490.00	1209.39	0	<200
Mg	ppm	108	69.20	793.00	373.01	6	<120
Mn	ppm	108	30.50	196.00	75.37	0	<12–20
S	ppm	108	2.48	20.10	8.42	41	<5–9
Cu	ppm	108	0.33	7.17	2.33	0	<0.1–0.3
B	ppm	108	0.04	0.26	0.13	100	<0.5
Zn	ppm	108	1.00	5.94	3.27	0	<0.6
Na	ppm	108	23.30	159.00	80.64	–	–
Fe**	ppm	108	142.00	724.00	388.53	0	<2–5
Silt	%	72*	3.48	20.50	9.56	–	–
Sand	%	72*	52.50	87.40	69.80	–	–
Clay	%	72*	6.00	34.10	20.54	–	–

*The first set of soil samples ($n = 36$) were not analysed for soil texture

**51% of the samples had > 300 ppm of Fe, which is the critical soil level for occurrence of Fe toxicity

critical levels in most rice fields in the Kilombero Valley. In the case of nitrogen (N), 60% of the samples were below the critical level of 0.2% (Laker 2005). Nitrogen is among the most important nutrients for rice production; application of appropriate doses of nitrogen alone can already boost lowland rice yields by close to 1 t ha⁻¹ (Tanaka et al. 2013). Phosphorus (P) and potassium (K) were below the critical levels in 14 and 27% of the soil samples, respectively (Table 3). Magnesium (Mg) and sulphur (S) were below the critical levels in 6 and 41% of the samples, respectively. Boron (B) was found to be below critical levels in all the samples. While iron (Fe) content was above the critical levels for the occurrence of mineral toxicity (> 300 ppm) in 51% of the samples, iron toxicity symptoms were not observed in our trials in either of the seasons. Given the existing genetic variation in iron toxicity tolerance across lowland rice varieties (Becker and Asch 2005; Olaleye et al. 2009), this could possibly be explained by a certain degree of tolerance in the rice varieties used here, reducing or masking symptoms of iron toxicity. Similarly, high concentrations of Ca were found in Kilombero soils, with an average Ca content of 1200 ppm (Table 3).

Conventionally, rice farmers in Kilombero did not apply any fertilisers, neither organic nor inorganic (Table 1). This practice, coupled with repeated removal of nutrients through the crop could be the cause for the poor soil fertility status of these soils. This poor soil fertility may be an important limiting factor for rice yields. Haefele et al. (2002a) showed that irrigated-rice yields without any fertiliser inputs are about half that of the yields obtained with optimal fertiliser application. Without optimal levels of required macro- and micronutrients, implementation of improved crop management practices, other than applying more nutrients, may also not yield the desired benefits (Tittonell and Giller 2013). High soil Fe and Ca contents may lead to fixation of P, as previously shown by Fageria et al. (2011) and Haefele et al. (2014), and this may lead to a lower use efficiency of applied P fertilisers. Whether this is the case for the soils in the Kilombero Valley would be subject to further investigation. Application of micronutrients through foliar spraying could be an option to overcome nutrient fixation by Ca- and Fe-rich soils (Rashid and Ryan 2004; Jin et al. 2008; Boonchuay et al. 2013).

Table 4 Percentage of farmers using the introduced GAP component technologies in Kilombero in 2013 and 2014

GAP component technologies	Farmers (%) used GAP			
	2013		2014	
	Irrigated group	Rainfed group	Irrigated group	Rainfed group
Land clearing	100	100	100	100
Tillage	100	100	100	100
Bunding	100	100	100	78
Preflooding	100	10	100	0
Puddling	100	20	100	11
Levelling	100	100	100	67
Use of certified seeds	100	100	100	100
Nursery sowing	100	100	100	11
Direct sowing in 20×20 cm spacing	0	100	0	89
Transplanting in 20×20 cm spacing	100	0	100	11
Thinning/gap filling	100	100	100	100
Inorganic fertiliser (basal application)	13	0	100	100
Inorganic fertiliser (first top dressing)	100	100	100	100
Inorganic fertiliser (second top dressing)	100	90	100	100
Organic fertiliser application	0	0	0	0
Herbicide application	13	20	11	22
Rotary weeding (first weeding)	75	20	100	0
Rotary weeding (second weeding)	63	0	100	0
Hand-weeding (first hand-weeding)	88	80	89	100
Hand-weeding (second hand-weeding)	88	80	89	100
Flooding	100	80	100	0
Drainage	88	0	100	0

Implementation of GAP component technologies

Most of the introduced GAP component technologies were implemented by all 18 farmers (Table 4) in both years. Moreover, the farmers showed improvements in implementing GAP in 2014 compared to 2013. For instance, 75 and 63% of irrigated-rice farmers used mechanical weeders for the first and second weeding, respectively, in 2013, compared to 100% in 2014. The reasons for not using the mechanical weeders in the first year were: (1) lack of sufficient water to facilitate the operation; (2) difficulties with operating the weeders in the field; and (3) fear of damaging the rice crop. However, the farmers overcame these challenges in 2014. Similar difficulties with operating the mechanical weeders were reported in southern India (Senthilkumar et al. 2008). In the case of the rainfed-rice farmers, only a few (20%) used mechanical weeders for the first weeding in 2013 and none used mechanical weeders afterwards. The three types of mechanical weeders (cono weeder, straight spike floating weeder and twisted spike floating weeder) introduced to these farmers are mechanical weeders with a floater in front. These weeders require a layer of water (2–5 cm in depth) for proper operation (Senthilkumar et al. 2008). Without this water layer, the soil could stick to the weeder spikes making it difficult to operate (Rodenburg et al. 2015). This may have caused the non-adoption of these rotary weeders by the rainfed-rice farmers. This experience underpins the need for mechanical weeders specific to rice-growing conditions to be designed, introduced and tested using a participatory approach of farmers, similar to what has been done by Gongotchame et al. (2014) in Benin.

Bunding and levelling were carried out by all the farmers in 2013; however, only 78 and 67% of the rainfed-rice farmers repeated these operations in 2014. The main reason for this drop in the number of farmers is that most of them used the same field as in the previous year and, consequently, there was no need or a reduced need to level and bund again. Bunding and levelling are essential components for lowland rice production and may boost rice yields by as much as 40% (Becker and Johnson 2001; Touré et al. 2009) due to improved water, soil fertility and weed management following these practices.

GAP component technologies such as preflooding and puddling were not used by the rainfed-rice farmers due to limited water availability, although some of them could implement these technologies when they collect rainwater in their fields using bunds (Table 4). Of the irrigated-rice farmers, 13 and 11% followed up on the herbicide use recommendations in GAP plots to control weeds, whereas this figure was 20 and 22% in 2013 and 2014, respectively, for the rainfed-rice farmers (Table 4). In general, herbicide use by rice farmers in SSA is low, probably due to a lack of information and expertise among farmers and imperfect

agro-chemical supply markets (Rodenburg and Johnson 2009). In the first season, 20% of the rainfed-rice farmers could not flood their GAP plots due to lack of rainwater, and 12% of the irrigated-rice farmers could not drain their GAP plot before harvesting due to lack of drainage channels (Table 4). In 2014, all the irrigated-rice farmers were able to flood and drain the water when it was necessary, while the rainfed-rice farmers still had no control over water. Water management is an inherent common constraint to rice production in rainfed lowlands (Nguyen and Ferrero 2006; Balasubramanian et al. 2007). The lack of water control also limits the proper use of herbicide application (Zimdahl 2007), as well as the implementation of mechanical weeders (Senthilkumar et al. 2008; Rodenburg et al. 2015).

In general, during the first season, it was observed that farmers could not execute all the GAP technologies on time due to a lack of knowledge and capacity for timely execution; the researchers needed to follow up on this with them regularly. After a second training session on GAP technologies in 2014, the farmers implemented the GAP technologies more timely and precisely than during the first season.

Yield advantages with GAP component technologies

The comparative yield advantages were studied using three different methods of yield assessment: (1) visual assessment by visiting farmers; (2) researcher measurements; and (3) estimations of total harvest by participating farmers.

Visiting farmers' anticipated rice yields

During the farmer field days, visiting farmers visually assessed the crop appearance and anticipated the yield from both GAP and FP plots. More than 90% of the visiting farmers anticipated higher yields in GAP plots than in FP plots in 2013, while all the farmers anticipated higher yields in GAP plots compared to FP plots in 2014 (Fig. 2a). The mean anticipated yields for FP and GAP plots were 3.6 and 6.4 t ha⁻¹ in 2013, and 4.0 and 7.1 t ha⁻¹ in 2014, respectively (Table 5). In 2013, 4% of the farmers anticipated equal yields and 4% anticipated lower yields from GAP plots compared to FP plots, while no farmers anticipated lower yields from GAP plots compared to FP plots in 2014. In both years, all visiting farmers had a positive opinion of GAP component technologies and showed a willingness to participate in similar on-farm trials in the future and to experiment with the components in their own fields. The farmer field days were organised as a means to create awareness through demonstration (Heiniger et al. 2002; Kondylis et al. 2014) of the GAP component technologies. The positive feedback of the visiting farmers on GAP technologies could have a positive impact on the adoption of such technologies in their

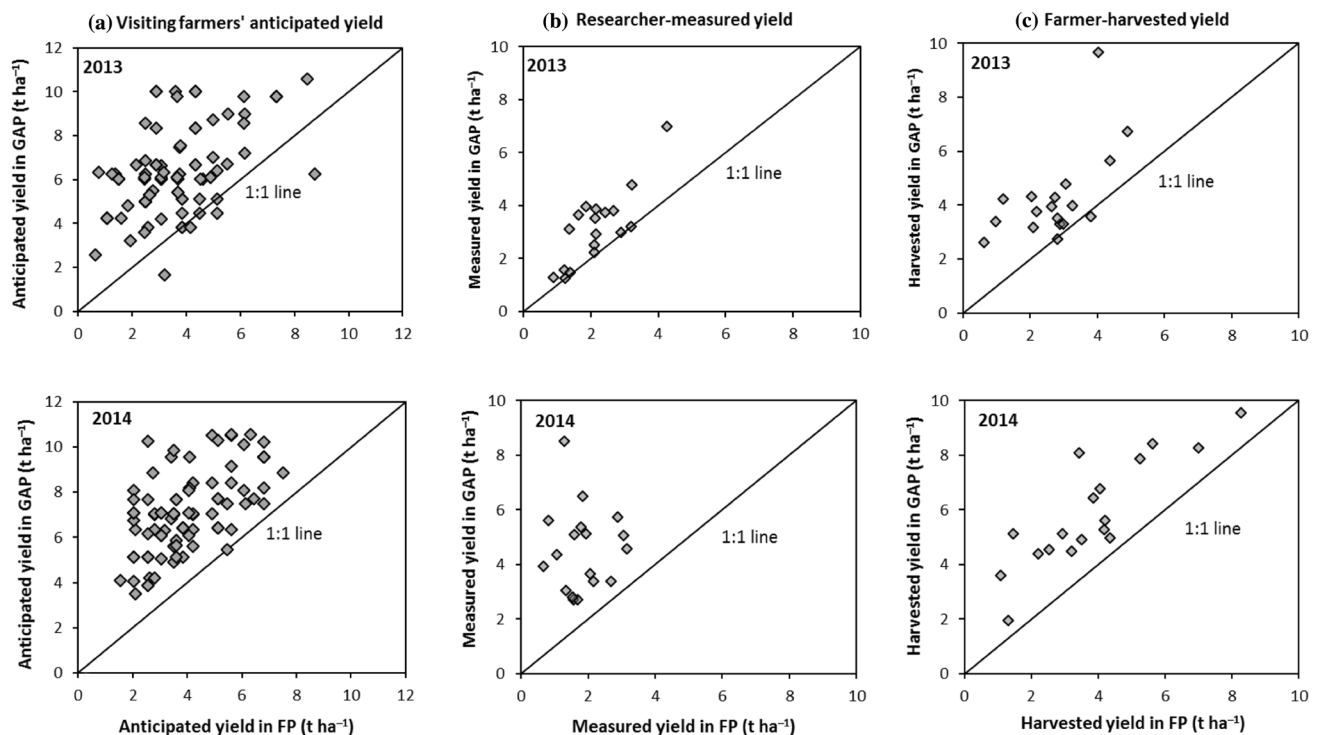


Fig. 2 Yield advantage of GAP (good agricultural practices) over FP (farmers' practices) in the on-farm trials as anticipated by the visiting farmers during the farmer field days ($n=90$), as measured by the

researchers ($n=18$), and as harvested by the farmers ($n=18$) in the Kilombero Valley in 2013 and 2014

own field. Since all the farmers come from a rather densely populated rice-growing area, farmer-to-farmer transfer of obtained experiences and knowledge could lead, in turn, to the increasing adoption of GAP components in the wider Kilombero Valley.

Researcher-measured rice yields

The researcher-measured yields in GAP plots were always higher than 88% or on par (12%) with the measured yields from FP plots in 2013, while all of the GAP plots registered higher yields in 2014 (Fig. 2b). Yields from GAP plots ranged from 1.3 to 7.0 $t\ ha^{-1}$ with a mean yield of 3.2 $t\ ha^{-1}$ in 2013, and from 2.7 to 8.5 $t\ ha^{-1}$ with a mean yield of 4.5 $t\ ha^{-1}$ in 2014, whereas in FP plots, yields ranged from 0.9 to 4.3 $t\ ha^{-1}$ with a mean yield of 2.2 $t\ ha^{-1}$ in 2013, and 0.7–3.2 $t\ ha^{-1}$ with a mean yield of 1.8 $t\ ha^{-1}$ in 2014 (Table 5 and Fig. 2b). Overall, increased yields were obtained in GAP plots in 2014 compared to 2013, which was due to a better understanding and better implementation of GAP component technologies (Table 4). Farmers learned to work with the GAP component technologies in the course of time by familiarising themselves with the techniques, as advocated by Foster and Rosenzweig (1995) and Luh (1995). Similar experiences were observed with

introduced technologies in rice-growing countries such as Senegal (Krupnik et al. 2012) and India (Senthilkumar et al. 2011, 2012).

Farmers' estimations of rice yields

Similar trends of yield advantages in GAP plots were obtained with the farmer-estimated rice yields. Farmer-estimated rice yields in GAP plots ranged from 2.6 to 9.7 $t\ ha^{-1}$ in 2013 and from 2 to 9.5 $t\ ha^{-1}$ in 2014. Farmer-estimated yields in FP plots ranged from 0.6 to 4.9 $t\ ha^{-1}$ in 2013 and from 1.1 to 8.3 $t\ ha^{-1}$ in 2014 (Fig. 2c). The mean farmer-estimated rice yields were 4.3 and 5.9 $t\ ha^{-1}$ in GAP plots and 2.7 and 3.8 $t\ ha^{-1}$ in FP plots for 2013 and 2014, respectively (Table 5). The wide range of yield estimates by farmers could be attributed to the general managerial capacity of the farmers, to the knowledge and capacity of individual farmers to implement the GAP component technologies properly and in a timely manner in the field, and to the inherent differences in soil physical and chemical properties as well. The soil nutrient analysis suggested that the yield could be limited by any of the macro- or micronutrients since the levels of these nutrients were below the critical level in many of the farmers' fields (Table 3). Importantly, similar to the yields from the GAP plots, the mean yields from the FP plots also increased by 1 $t\ ha^{-1}$ in 2014 compared to

Table 5 ANOVA for yield, yield attributes and weed biomass comparing farmers' practice (FP) and good agricultural practices (GAP) in the year 2013 and 2014

Parameter	Unit	Year	<i>n</i>	Farmers' practice (FP)—LS mean	Good agricultural practice (GAP)—LS mean	SE	<i>P</i> value
Yield—researchers measured	t ha ⁻¹	2013	18	2.2	3.2	0.27	0.013
		2014	18	1.8	4.5	0.28	<0.0001
Yield—farmers' estimated	t ha ⁻¹	2013	18	2.7	4.3	0.48	0.003
		2014	18	3.8	5.9	0.64	0.003
Yield—visiting farmers' anticipated	t ha ⁻¹	2013	90	3.6	6.4	0.19	<0.0001
		2014	90	4.0	7.1	0.17	<0.0001
Plant population (number of hills)	m ⁻²	2013	18	22.6	23.1	0.85	0.662
		2014	18	22.5	23.0	0.88	0.673
Tiller number at harvest	m ⁻²	2013	18	184.7	261.7	19.48	0.008
		2014	18	168.0	322.8	18.13	<0.0001
Panicle number	m ⁻²	2013	18	175.0	238.5	17.87	0.017
		2014	18	153.5	303.6	16.89	<0.0001
Plant height	cm	2013	18	106.2	91.4	4.82	0.036
		2014	18	109.2	102.0	5.10	0.328
1000-grain weight	g	2013	18	30.1	29.7	0.42	0.527
		2014	18	29.5	29.5	0.25	0.788
Filled grain percentage	%	2013	NA	NA	NA	NA	NA
		2014	18	85.4	84.04	1.10	0.380
Weed biomass	g m ⁻²	2013	18	120.1	110.4	17.71	0.701
		2014	18	85.1	49.3	7.02	0.001
Harvest Index	–	2013	NA	NA	NA	NA	NA
		2014	18	0.20	0.36	0.02	<0.0001

NA data not available

P values <0.05 are significantly different

yields in 2013. Farmers might have learned from some of the GAP component technologies in 2013 and consciously or unconsciously implemented these obtained insights into FP plots, in spite of our explicit instructions to maintain exactly the same practices in FP throughout the study. Follow-up surveys on adoption of GAP component technologies are needed to confirm the farmers' knowledge about GAP component technologies and the subsequent inclusion of these practices in their rice production routines.

The farmers' estimated yields were higher than the researcher-measured yields in both seasons. The differences in yields could be due to the use of different methodologies for yield estimation. Farmers' estimated yields in number of bags with unknown moisture content and harvested from the entire plot while researcher-measured yields were from 4-m² areas and the yields were corrected to 14% moisture content. Researcher-measured yields were therefore more accurate than the farmers' estimated yields and the visiting farmers' anticipated yields. Though there were differences in yield estimations using three different methodologies, the results showed similar yield trends, i.e. yields with GAP were always higher than with FP. The farmers' estimated and

visiting farmers anticipated yields were used to understand the farmers' perception on yield with FP and GAP.

Critical assessment of yield advantages achieved with GAP

The higher yields achieved with the introduction of GAP component technologies in the Kilombero Valley were critically assessed. A strong correlation between the number of panicles and the corresponding grain yields were observed for both FP plots ($r^2=0.67$) and GAP plots ($r^2=0.81$) in 2014 (Fig. 3), attesting to the consistency in the observations.

The multiple regression analysis performed to identify the impact of individual GAP component technologies on yield in GAP plots showed that the use of basal inorganic fertiliser and drainage were the main causes for yield differences in the GAP plots among the farmers under irrigated condition (multiple determination coefficient $R^2=0.805$). The yields were increased by 1.39 t ha⁻¹ in case the basal fertilisers were applied and by 1.68 t ha⁻¹ in case drainage of excess water was done when required (Table 6). The results are directly relating to two of the most important

Fig. 3 Relationship between panicle number (m^{-2}) and grain yield (t ha^{-1}) in all on-farm trials ($n=18$) in 2014. The line indicates the linear regression between the two variables

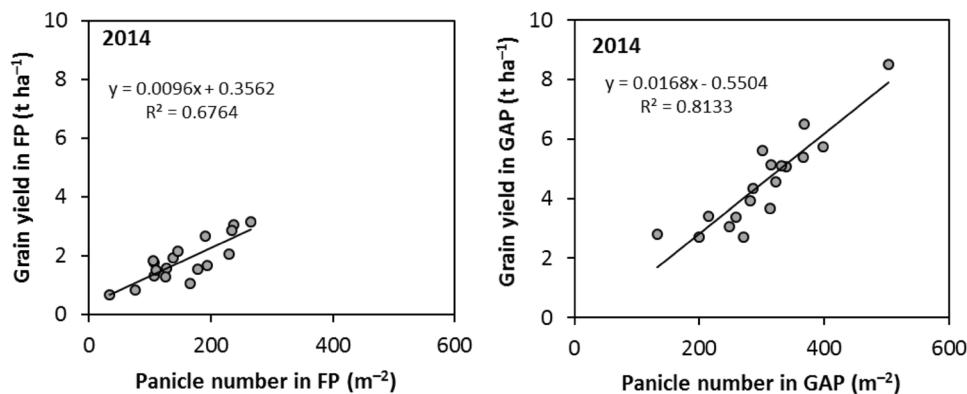


Table 6 Multiple regression analysis showing the GAP component technology that influenced the yield under irrigated and rainfed conditions in both 2013 and 2014

GAP component technology	Coefficient	<i>P</i> value	Lower 95% confidence limit	Upper 95% confidence limit
(a) Irrigated farmers ($n=17$; multiple determination coefficient $R^2=0.805$)				
<i>Intercept</i>	-1.627	0.467	-6.542	3.288
Levelling	2.063	0.057	-0.082	4.209
Thinning/gap filling	1.740	0.098	-0.406	3.885
Inorganic fertiliser (basal application)	1.392	0.046	0.035	2.749
Herbicide application	-1.875	0.349	-6.218	2.469
Rotary weeding (first and second weeding)	-1.334	0.260	-3.872	1.204
Hand-weeding (first hand-weeding)	2.701	0.104	-0.691	6.093
Hand-weeding (second hand-weeding)	-1.902	0.134	-4.529	0.726
Drainage	1.682	0.021	0.325	3.038
(b) Rainfed farmers ($n=19$; multiple determination coefficient $R^2=0.286$)				
<i>Intercept</i>	1.339	0.695	-5.933	8.611
Bunding	-0.888	0.690	-5.626	3.851
Levelling	0.685	0.737	-3.654	5.025
Direct sowing in 20×20 cm spacing	1.110	0.587	-3.229	5.450
Inorganic fertiliser (basal application)	1.335	0.210	-0.862	3.533
Inorganic fertiliser (second top dressing)	1.453	0.456	-2.658	5.564
Herbicide application	0.824	0.456	-1.507	3.155

P values < 0.05 are significant

production factors in rice cultivation, i.e. nutrient and water management. The regression analysis results only partially explained the yield differences in GAP plots. There could be other factors that influenced the yield in GAP plots such as inherent differences in soil fertility, pest and diseases levels and prevailing weather conditions, but these factors were beyond the scope of this analysis. Under rainfed conditions, the regression analysis could not identify any such GAP component technology that impacted the yield significantly in GAP plots (multiple determination coefficient $R^2=0.286$).

The range of yields reported in the current study overlaps with the range of average rice yields found in previous studies in the region. Average farmers' yields found in the literature range from 3.9 t ha^{-1} reported in Mauritania (Haefele et al. 2001), 4.2 t ha^{-1} —with a maximum of 7.3 t ha^{-1} —in

Côte d'Ivoire (Becker and Johnson 1999) and 4.8 t ha^{-1} in Benin (Tanaka et al. 2013), to 5.6 and 6.7 t ha^{-1} in Senegal (Krupnik et al. (2012) and Haefele et al. (2002b), respectively). The yield range found under farmers' practices in the current study was 0.7 to 4.3 t ha^{-1} .

The maximum researcher-measured yield following GAP was 8.5 t ha^{-1} , and this also falls within the range of yields reported from farms across Africa where recommended practices were followed: e.g. 7.8 t ha^{-1} in Benin (Tanaka et al. 2013) and 7.3 t ha^{-1} in Côte d'Ivoire (Becker and Johnson 1999), 8.5 t ha^{-1} in Mauritania (Haefele et al. 2001) and even 9.0 t ha^{-1} in Senegal (Krupnik et al. 2012). In the current study, the maximum yield (8.5 t ha^{-1}) was achieved by one of the farmers in the 2014 rainfed but water-unlimited trials. This particular farmer was the only farmer

who followed the complete proposed set of good agricultural practices. For example, she used herbicides followed by mechanical weeding at 20 and 40 DAS, and then conducted follow-up hand-weeding within the crop rows to remove the weeds that were missed by the weeder, as recommended by Rodenburg et al. (2015). Hence, by carefully following up on GAP, high yields can be obtained, but the 8.5 t ha^{-1} paddy yield is still 15–23% below the potential (water-unlimited) yield estimated for this area (GYGA 2015; van Ittersum et al. 2016). The remaining yield gap could be due to the relatively low soil fertility of this particular plot. The macro- and micronutrient levels in this field were close to or just above the critical levels of soil nutrients for rice production, as described in Table 3. The general low potassium and micronutrient levels of the soils in Kilombero were not addressed by the fertiliser application under GAP due to the lack of a reliable market supply of such fertilisers in this area. In line with previous propositions by Tittonell and Giller (2013), the above results would suggest that with better-balanced fertiliser applications, including potassium and micronutrients, rice yields in farmer's fields could be enhanced to further close the yield gap through GAP. This is important information that can be shared with farmers and agro-dealers in the Kilombero Valley in order to improve the supply and application of such types of fertilisers in the future.

Comparison of yield-attributing characteristics

There were no significant differences in plant population between FP and GAP plots in both years. The number of hills m^{-2} was 22.6 and 22.5 in FP and 23.1 and 23 in GAP plots in 2013 and 2014, respectively (Table 5). The number of tillers m^{-2} at harvest was significantly higher in GAP plots than in FP plots in both years. It was 262 and 323 in GAP plots; and 185 and 168 in FP plots in 2013 and 2014, respectively (Table 5). The number of panicles m^{-2} was significantly higher in GAP plots than in FP plots in most cases (83%) in 2013 and in all the plots in 2014 (Table 5 and Fig. 4a), which corresponds well to the yield advantages achieved with the GAP plots over FP plots. The plants were taller in FP plots than in GAP plots in both years (Table 5 and Fig. 4b), possibly due to inherent differences in varietal characteristics. The popular variety, SARO5, a short-stature variety (Msomba et al. 2004), was used in all the GAP plots in both years (Table 1). In the FP plots, farmers used local varieties, Kisekese, Kalamata and Super India (Table 1), which are all inherently taller than SARO5 (Luzi-Kihupi et al. 2009). There were no significant differences in the 1000-grain weight and percentage of filled grains between GAP and FP plots (Table 5 and Fig. 4c). The harvest index ranged from 0.06 to 0.37 with a mean of 0.20 for FP plots and from 0.23 to 0.48 with a mean of 0.36 for GAP plots (Table 5 and Fig. 5). The harvest index was higher in 16

GAP plots and almost equal in the remaining two GAP plots over FP plots. The significantly higher harvest index with GAP plots should be due to the use of the aforementioned shorter stature but higher-yielding variety, SARO5, coupled with the implementation of GAP adopted by the farmers.

The weed biomass assessed at harvest was higher in (most of) the FP plots compared to the GAP plots in both seasons, implying more weed pressure with the farmers' weed management practices (Fig. 5). In 2013, the dry weed biomass ranged from 39 to 247 g m^{-2} with a mean of 120 g m^{-2} in FP plots and from 33 to 334 g m^{-2} with a mean of 110 g m^{-2} in GAP plots, while in 2014, it ranged from 39 to 177 g m^{-2} with a mean of 85 g m^{-2} in FP plots and from 19 to 95 g m^{-2} with a mean of 49 g m^{-2} in GAP plots. However, the dry weed biomass was statistically higher in FP plot than GAP plots only in 2014 (Table 5). Overall, the weed pressure was reduced in both FP and GAP plots in 2014 compared to 2013, suggesting that with the experience of the first season, the farmers may have learned to better control weeds in the second season. Indeed, as mentioned before, overall better and more consistent use of mechanical weeders was observed by all the irrigated-rice farmers in 2014 compared to 2013 (Table 4).

Farmers' opinions of GAP component technologies

According to the participating farmer surveys held after each season, all farmers liked to practice land clearing, tillage, bunding, the use of certified seeds, sowing or planting in lines and maintaining fixed plant spacing within lines, thinning and gap filling, and application of inorganic fertilisers in both seasons (Table 7). They were also convinced that these GAP component technologies are important, whereas most of them found that they can be easily carried out and it is likely that they will continue to use them in the future. However, 22 and 39% of the farmers in 2013 and 2014, respectively, mentioned that land levelling is difficult to do (Table 7). Furthermore, 10 to 20% of the farmers mentioned that tilling, bunding, planting or sowing in lines and maintaining fixed plant spacing within lines is difficult to implement.

The farmer surveys indicated that none of the farmers applied organic manures in any of the seasons. It was observed that they do not like to apply organic manures or that they felt that it was not important, and they do not intend to use them in the future. Reasons for not using organic fertilisers could be the lack of knowledge, labour constraints and the poor short-term benefits, as observed with farmers in northern Ghana by Becx et al. (2012). The total absence of the use of organic fertilisers by the farmers surveyed in the current study also explains the very poor soil fertility status of their soils (Table 3). Non-application of animal manures

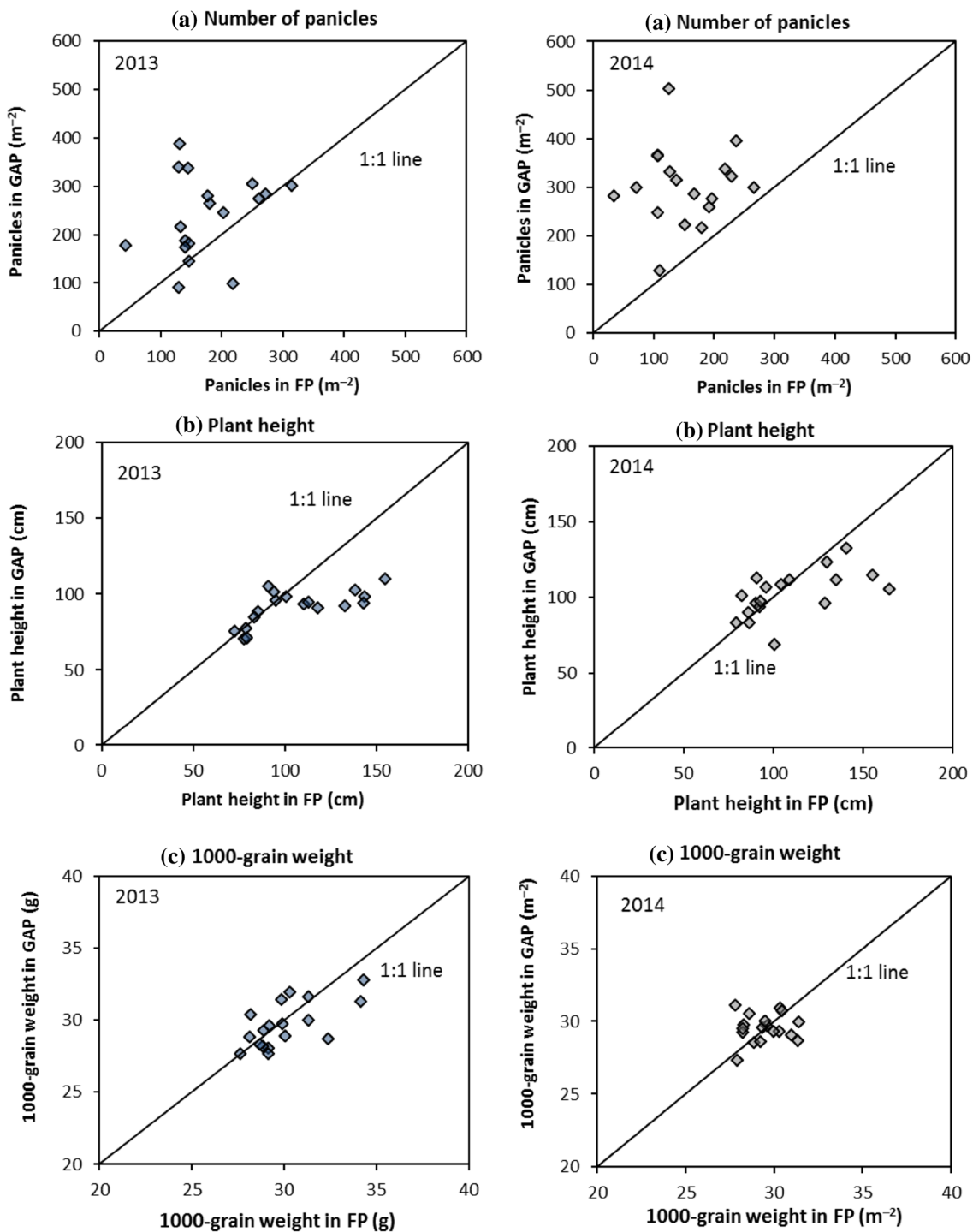


Fig. 4 Rice yield attributes of GAP (good agricultural practices) over FP (farmers' practices) in the on-farm trials ($n = 18$) in Kilombero in 2013 and 2014

with the monoculture of rice could be the cause of the very low levels of micronutrients such as B, S and Mg, as shown by Castellanos-Navarrete et al. (2015), Rufino et al. (2007), and Schulz et al. (2011). Since organic fertilisers could offer an affordable and good alternative to the more expensive

mineral fertilisers (Marenya et al. 2012; Epule et al. 2015), future development and extension efforts to raise awareness and demonstrate the options and effects of the use of organic soil amendments would be a valuable investment in this area.

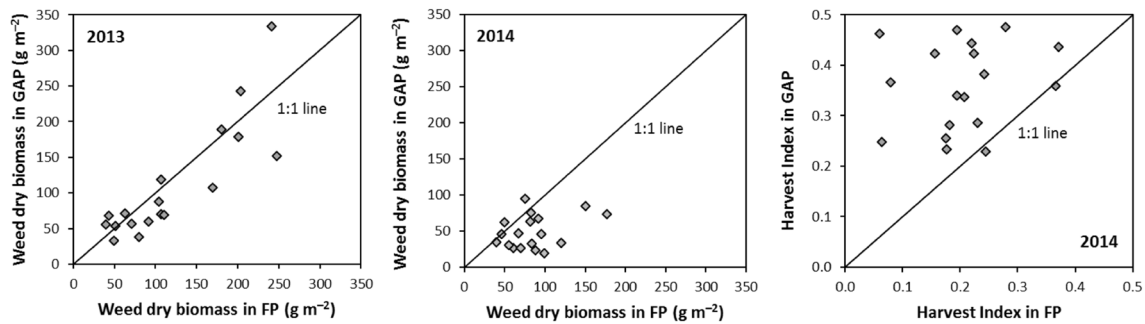


Fig. 5 Weed dry biomass (g m^{-2}) and Harvest Index in GAP over FP in the on-farm trials ($n=18$) in Kilombero in 2013 and 2014

In the case of weed control, all farmers found that the application of herbicides is easy to do and most of them (78% in 2013 and 83% in 2014) preferred this mode of weed control (Table 7). However, 87–89% of the irrigated-rice farmers and 78–80% of the rainfed-rice farmers did not actually use herbicides (Table 7), possibly because of the costs involved—a common adoption constraint for herbicides—in addition to limited market access (Rodenburg and Johnson 2009). Most of the farmers (72% in 2013 and 89% in 2014) liked the mechanical weeders, and a similar share of farmers found them useful and important. However, the remaining share of farmers reported that it was difficult to operate them, and 67–78% of the farmers in 2013 and 50% of the farmers in 2014 were not sure whether they would use them in the future (Table 7). Interestingly, the number of farmers that indicated that they would use the mechanical weeders in the future increased from 22 to 33% for the first and second mechanical weeding, respectively, in 2013, to 50% for both weeding interventions in 2014. This implies that the use of the mechanical weeder becomes easier and/or more efficient with experience. Similar findings have been reported with the use of mechanical weeders in Asia where farmer adoption increased with experience (Senthilkumar et al. 2008). These observations support the necessity to conduct more research on designing and adapting locally acceptable, user-friendly mechanical weeders to improve adoption. With the introduction and increasing experience with the mechanical weeders, the preference for the laborious practice of hand-weeding operations decreased from 28 and 44% for the first and second hand-weeding, respectively, in 2013, to 83% for both hand-weeding interventions in 2014. Hand-weeding is a common practice in SSA in any rice-growing environment, and consumes a major share of the farmers' time spent on crop management (Akobundu 1987; Lodin-Bergman et al. 2012; Ogwuikie et al. 2014). The result of this

study supports the general assumption that subsistence farmers need adapted labour-saving technologies.

The GAP component technologies that are specific to irrigated rice, such as preflooding, puddling, follow-up irrigation and drainage before harvest, were appreciated by all the irrigated-rice farmers. They also felt that these practices are important, easy to implement and that they will continue using them in the future.

Potential impact of adopting GAP in rice production in Tanzania

The results of the on-farm trials demonstrated the yield gains that can be achieved with the adoption of GAP component technologies in Tanzania. An average yield gain of 1 t ha^{-1} in 2013 and 2.7 t ha^{-1} in 2014 was achieved with the implementation of GAP by the farmers in the Kilombero Valley (Fig. 2b). The follow-up farmer surveys showed the adoption potential of the GAP component technologies by the farmers.

This case study of the Kilombero Valley showed the potential of exposing farmers to GAP on boosting the rice yields in Tanzania. Farmer training and the farmers' own experiences with GAP can be used as a tool in large-scale rice-farming extension efforts to transform rice production in Tanzania. This will trigger a positive change in the participating farmer's crop management and their livelihood. However, an enabling environment should be created for rice farmers to increase their rice production through the adoption of GAP component technologies. This means improving farmers' awareness and providing access to certified seeds of improved varieties, balanced mineral fertilisers, small-scale agricultural implements and machinery, and creating a viable rice value chain that would ensure reliable supply and demand markets (Demont 2013).

Table 7 Farmers' opinion of individual GAP component technologies on their preference, perceived importance, workability and possible future use observed during the on-farm trials ($n = 18$) comparing GAP and FP in Kilombero in 2013 (Y1) and 2014 (Y2)

	Opinion of GAP by farmers (%)																								
	On preference						On importance						On workability						On future use						
	Like it		Do not like it		Partly like it		Felt important		Felt not important		Not sure		Easy to do		Difficult to do		No difference		Yes		Not sure		No		
	Y1	Y2	Y1	Y2	Y1	Y2	Y1	Y2	Y1	Y2	Y1	Y2	Y1	Y2	Y1	Y2	Y1	Y2	Y1	Y2	Y1	Y2	Y1	Y2	
Land clearing	100	100	0	0	0	0	100	100	0	0	0	0	100	89	0	11	0	0	100	100	0	0	0	0	
Tillage	100	100	0	0	0	0	100	100	0	0	0	0	94	78	6	22	0	0	100	100	0	0	0	0	
Bunding	100	100	0	0	0	0	100	100	0	0	0	0	89	78	11	22	0	0	100	100	0	0	0	0	
Preflooding ¹	100	100	0	0	0	0	100	100	0	0	0	0	88	89	13	0	0	11	100	100	0	0	0	0	
Puddling ¹	100	100	0	0	0	0	100	100	0	0	0	0	100	100	0	0	0	0	100	100	0	0	0	0	
Levelling	100	100	0	0	0	0	100	100	0	0	0	0	78	61	22	39	0	0	100	100	0	0	0	0	
Use of certified seeds	100	100	0	0	0	0	100	100	0	0	0	0	100	100	0	0	0	0	100	100	0	0	0	0	
Nursery sowing ¹	88	100	0	0	13	0	88	100	13	0	0	0	88	100	13	0	0	0	88	100	0	0	13	0	
Direct sowing in 20×20 cm spacing ^R	100	100	0	0	0	0	100	100	0	0	0	0	80	89	20	11	0	0	100	89	0	11	0	0	
Transplanting in 20×20 cm spacing ¹	100	100	0	0	0	0	100	100	0	0	0	0	88	100	13	0	0	0	88	100	0	0	13	0	
Thinning/gap filling	100	100	0	0	0	0	100	100	0	0	0	0	89	100	11	0	0	0	100	100	0	0	0	0	
Inorganic fertiliser (basal application)	100	100	0	0	0	0	100	100	0	0	0	0	100	100	0	0	0	0	89	100	11	0	0	0	
Inorganic fertiliser (first top dressing)	100	100	0	0	0	0	100	100	0	0	0	0	100	100	0	0	0	0	100	100	0	0	0	0	
Inorganic fertiliser (second top dressing)	100	100	0	0	0	0	100	100	0	0	0	0	100	100	0	0	0	0	100	100	0	0	0	0	
Organic fertiliser application	11	0	72	100	17	0	0	0	72	100	28	0	0	0	100	100	0	0	0	0	0	0	0	100	100
Herbicide application	78	83	6	11	17	6	72	78	6	6	22	17	100	100	0	0	0	0	22	6	72	94	6	0	
Mechanical weeding (first weeding)	72	89	22	0	6	11	78	89	11	6	11	6	78	89	22	11	0	0	33	50	50	33	17	17	
Mechanical weeding (second weeding)	72	89	22	0	6	11	72	89	22	6	6	6	72	89	28	11	0	0	22	50	50	33	28	17	
Hand-weeding (first hand-weeding)	67	11	28	83	6	6	89	94	6	0	6	6	22	50	78	50	0	0	72	78	22	22	6	0	
Hand-weeding (second hand-weeding)	50	11	44	83	6	6	94	94	0	0	6	6	17	50	83	50	0	0	78	78	17	22	6	0	
Flooding ¹	100	100	0	0	0	0	100	100	0	0	0	0	100	100	0	0	0	0	100	100	0	0	0	0	
Drainage ¹	100	100	0	0	0	0	100	100	0	0	0	0	100	100	0	0	0	0	88	100	13	0	0	0	

Data only for irrigated or rainfed farmers are in italics

FP farmers' (conventional) practices, GAP good agricultural practices

¹Irrigated farmers only ($n = 8$)

^RRainfed farmers only ($n = 10$)

Conclusions

Large yield gains can be achieved by smallholder rice farmers in sub-Saharan Africa through the implementation of good agricultural practices (GAP). The yield gains using GAP was achieved through increased panicle number, higher harvest index, and reduced weed pressure. While smallholder rice farmers are often resource poor, they are usually able to implement most of the component technologies that constitute such GAP and are capable of improving the implementation of these practices over time by familiarising themselves with the techniques. Exposure to GAP, in the way done in this study, may encourage farmers to use at least some of its components in the future. While farmers may find certain component technologies of GAP difficult to implement (i.e. land levelling, planting or sowing in line, and maintaining fixed plant spacing within lines), they also generally see the importance of these technologies and appreciate the yield improvements obtained with them. This provides a valuable outlook for future development efforts in the rice sector in sub-Saharan Africa. While follow-up training of farmers and impact assessment studies are required to ascertain GAP adoption and to provide proof of the effectiveness of the methods followed in this study, the case of the Kilombero Valley shows that rice yields can be substantially improved by relatively simple adjustments of current farmer practices. Moreover, this case study indicates that the adoption of GAP by smallholder rice farmers can be triggered by stimulating experimentation with such practices on their own farms. Larger-scale exposure of farmers to these practices, e.g. by the institutionalisation of nationwide training programmes on GAP technologies, or the production and dissemination of farmer-to-farmer instruction videos, is required to capitalise on the lessons learned in this study in order to boost lowland rice yields in Tanzania as well as in other rice-producing countries in SSA.

Acknowledgements We thank the African Development Bank (AfDB) and the United States Agency for International Development (USAID) for funding this research through the SARD-SC and Africa RISING project, respectively. We thank the enumerators Stella Mghase, Ditic Mwingira, Wenseslaus Mishiko, David Lihepanyama, Emmanuel Makoninde and Dominic Ilaila, from the Kilombero Agricultural Training and Research Institute (KATRIN), for their assistance in conducting the trials and data collection. We thank Ibnou Dieng, Africa Rice Center for his assistance with the statistical analysis. This is an output of the CGIAR Research Programme, GRIISP, the Global Rice Science Partnership. The CGIAR Big Data Platform in Agriculture project supported the open access of this publication.

Open Access This article is distributed under the terms of the Creative Commons Attribution 4.0 International License (<http://creativecommons.org/licenses/by/4.0/>), which permits unrestricted use, distribution, and reproduction in any medium, provided you give appropriate credit to the original author(s) and the source, provide a link to the Creative Commons license, and indicate if changes were made.

References

- Addinsoft (2007) Data and statistical analysis with MS Excel. NY
- Akobundu IO (1987) Weed science in the tropics. Principles and practices. Wiley, Chichester
- Balasubramanian V, Sie M, Hijmans RJ, Otsuka K (2007) Increasing rice production in Sub-Saharan Africa: challenges and opportunities. *Adv Agron* 94:55–132. [https://doi.org/10.1016/S0065-2113\(06\)94002-4](https://doi.org/10.1016/S0065-2113(06)94002-4)
- Becker M, Asch F (2005) Iron toxicity in rice—conditions and management concepts. *J Plant Nutr Soil Sci* 168:558–573. <https://doi.org/10.1002/jpln.200520504>
- Becker M, Johnson DE (1999) Rice yield and productivity gaps in irrigated systems of the forest zone of Côte d'Ivoire. *Field Crop Res* 60:201–208
- Becker M, Johnson DE (2001) Improved water control and crop management effects on lowland rice productivity in West Africa. *Nutr Cycl Agroecosyst* 59:119–127
- Becker M, Johnson DE, Wopereis MCS, Sow A (2003) Rice yield gaps in irrigated systems along an agro-ecological gradient in West Africa. *J Plant Nutr Soil Sci* 166:61–67
- Becx G, Mol G, Eenhoorn J et al (2012) Perceptions on reducing constraints for smallholder entrepreneurship in Africa: the case of soil fertility in Northern Ghana. *Curr Opin Environ Sustain* 4:489–496. <https://doi.org/10.1016/j.cosust.2012.10.012>
- Boonchuay P, Cakmak I, Rerkasem B, Prom-U-Thai C (2013) Effect of different foliar zinc application at different growth stages on seed zinc concentration and its impact on seedling vigor in rice. *Soil Sci Plant Nutr* 59:180–188
- Castellanos-Navarrete A, Tittonell P, Rufino MC, Giller KE (2015) Feeding, crop residue and manure management for integrated soil fertility management—a case study from Kenya. *Agric Syst* 134:24–35
- Ceesay M (2010) An opportunity for increasing factor productivity for rice cultivation in The Gambia through SRI. *Paddy Water Environ* 9:129–135. <https://doi.org/10.1007/s10333-010-0235-1>
- Demont M (2013) Reversing urban bias in African rice markets: a review of 19 National Rice Development Strategies. *Glob Food Secur* 2:172–181. <https://doi.org/10.1016/j.gfs.2013.07.001>
- Diagne A, Amovin-Assagba E, Futakuchi K, Wopereis MCS (2013) Estimation of cultivated area, number of farming households and yield for major rice-growing environments in Africa. In: Wopereis MC, Johnson DE, Ahmadi N et al (eds) *Realizing Africa's rice promise*. CABI, Wallingford, pp 35–45
- Epule ET, Bryant CR, Akkari C, Daouda O (2015) Can organic fertilizers set the pace for a greener arable agricultural revolution in Africa? Analysis, synthesis and way forward. *Land Use Policy* 47:179–187. <https://doi.org/10.1016/j.landusepol.2015.01.033>
- Fageria N, Carvalho G, Santos A et al (2011) Chemistry of lowland rice soils and nutrient availability. *Commun Soil Sci Plant Anal* 42:1913–1933. <https://doi.org/10.1080/00103624.2011.591467>
- Fairhurst TH, Witt C, Buresh RJ, Dobermann A (2007) Rice—a practical guide to nutrient management. International Rice Research Institute, Los Baños
- Felister M, Speelman S, Van Huylenbroeck G et al (2011) Ratification of the Ramsar convention and sustainable wetlands management: situation analysis of the Kilombero Valley wetlands in Tanzania. *J Agric Ext Rural Dev* 3:153–164
- Foster A, Rosenzweig M (1995) Learning by doing and learning from others: human capital and technical change in agriculture. *J Polit Econ* 103:1176–1209
- Gongotchame S, Dieng I, Ahouanton K et al (2014) Participatory evaluation of mechanical weeders in lowland rice production systems in Benin. *Crop Prot* 61:32–37. <https://doi.org/10.1016/j.cropro.2014.03.009>

- GYGA (2015) Global yield gap atlas [Home page]. <http://www.yieldgap.org/gygamaps/app/index.html>. Accessed 18 Feb 2016
- Haefele SM, Johnson DE, Diallo S et al (2000) Improved soil fertility and weed management is profitable for irrigated rice farmers in Sahelian West Africa. *Field Crop Res* 66:101–113
- Haefele S, Wopereis MC, Donovan C, Maubuisson J (2001) Improving the productivity and profitability of irrigated rice production in Mauritania. *Eur J Agron* 14:181–196. [https://doi.org/10.1016/S1161-0301\(00\)00094-0](https://doi.org/10.1016/S1161-0301(00)00094-0)
- Haefele S, Wopereis MC, Wiechmann H (2002a) Long-term fertility experiments for irrigated rice in the West African Sahel: agronomic results. *Fields Crop Res* 78:119–131. [https://doi.org/10.1016/S0378-4290\(02\)00117-X](https://doi.org/10.1016/S0378-4290(02)00117-X)
- Haefele SM, Wopereis MCS, Donovan C (2002b) Farmers' perceptions, practices and performance in a sahelian irrigated rice scheme. *Exp Agric* 38:197–210. <https://doi.org/10.1017/S001447970200025X>
- Haefele S, Nelson A, Hijmans R (2014) Soil quality and constraints in global rice production. *Geoderma* 235–236:250–259. <https://doi.org/10.1016/j.geoderma.2014.07.019>
- Heiniger R, Havlin J, Crouse D et al (2002) Seeing is believing: the role of field days and tours in precision agriculture education. *Precis Agric* 3:309–318
- Jin Z, Minyan W, Lianghuan W et al (2008) Impacts of combination of foliar iron and boron application on iron biofortification and nutritional quality of rice grain. *J Plant Nutr* 31:1599–1611. <https://doi.org/10.1080/01904160802244803>
- Kilimo Trust (2014) Expanding rice markets in the East African community: an opportunity for actors in the rice value chain. Competitive Africa Rice Initiative (CARI), Dar es Salaam, Tanzania, 64 pp
- Kondylis F, Mueller V, Zhu SJ (2014) Seeing is believing? Evidence from an extension network experiment. World Bank Group, Development Research Group, Washington, p 57
- Krupnik TJ, Shennan C, Settle WH et al (2012) Improving irrigated rice production in the Senegal River Valley through experiential learning and innovation. *Agric Syst* 109:101–112. <https://doi.org/10.1016/j.agsy.2012.01.008>
- Laker M (2005) Appropriate plant nutrient management for sustainable agriculture in Southern Africa. *Commun Soil Sci Plant Anal* 36:89–106
- Lodin-Bergman J, Paulson S, Mugenyi MS (2012) New seeds, gender norms and labor dynamics in Hoima District, Uganda. *J East African Stud* 6:405–422
- Luh Y (1995) Are farmers learning by doing? Experience in Taiwan. *Rev Agric Econ* 17:213–227. <https://doi.org/10.2307/1349734>
- Luzi-Kihupi A, Zakayo JA, Tusekelege H et al (2009) Mutation breeding for rice improvement in Tanzania. Food and Agricultural Organization (FAO), Rome, pp 385–387
- Marenya P, Nkonya E, Xiong W et al (2012) Which policy would work better for improved soil fertility management in sub-Saharan Africa, fertilizer subsidies or carbon credits? *Agric Syst* 110:162–172. <https://doi.org/10.1016/j.agsy.2012.04.004>
- Mowo J., Floor J, Kaihura FBS, Magogo JP (1993) Review of fertilizer recommendations for Tanzania. Soil fertility report No. F6. ARI-Mlingano, National soil Services, Ministry of Agriculture, Tanga, Tanzania, pp 25–29
- Msomba SW, Kibanda JM, Penza H et al (2004) TXD306—a high-yielding and medium-maturing aromatic rice for the rainfed lowland and irrigated ecosystems in Tanzania. *Int Rice Res Notes* 29:30–31
- Nguyen N, Ferrero A (2006) Meeting the challenges of global rice production. *Paddy Water Environ* 4:1–9. <https://doi.org/10.1007/s10333-005-0031-5>
- Nhamo N, Rodenburg J, Zenna N et al (2014) Narrowing the rice yield gap in East and Southern Africa: using and adapting existing technologies. *Agric Syst* 131:45–55
- Nwite JC, Igwe CA, Wakatsuki T (2008) Evaluation of sawah rice management system in an inland valley in southeastern Nigeria. I: soil chemical properties and rice yield. *Paddy Water Environ* 6:299–307. <https://doi.org/10.1007/s10333-008-0123-0>
- Ogwuikwe P, Rodenburg J, Diagne A et al (2014) Weed management in upland rice in sub-Saharan Africa: impact on labor and crop productivity. *Food Secur* 6:327–337. <https://doi.org/10.1007/s12571-014-0351-7>
- Olalaye AO, Ogunkunle AO, Singh BN et al (2009) Ratios of nutrients in lowland rice grown on two iron toxic soils in Nigeria. *J Plant Nutr* 32:1336–1352. <https://doi.org/10.1080/01904160903006036>
- Pansu M, Gautheryrou J (2007) Handbook of soil analysis: mineralogical, organic and inorganic methods. Springer, Berlin, p 993
- Poussin J-C, Diallo Y, Legoupil J-C (2006) Improved collective decision-making in action for irrigated rice farmers in the Senegal River Valley. *Agric Syst* 89:299–323. <https://doi.org/10.1016/j.agsy.2005.09.006>
- Rashid A, Ryan J (2004) Micronutrient constraints to crop production in soils with Mediterranean-type characteristics: a review. *J Plant Nutr* 27:959–975. <https://doi.org/10.1081/PLN-120037530>
- Rodenburg J, Johnson D (2009) Weed management in rice-based cropping systems in Africa. *Adv Agron* 103:149–218. [https://doi.org/10.1016/S0065-2113\(09\)03004-1](https://doi.org/10.1016/S0065-2113(09)03004-1)
- Rodenburg J, Meinke H, Johnson DE (2011) Challenges for weed management in African rice systems in a changing climate. *J Agric Sci* 149:427–435. <https://doi.org/10.1017/S0021859611000207>
- Rodenburg J, Zwart SJ, Kiepe P et al (2014) Sustainable rice production in African inland valleys: seizing regional potentials through local approaches. *Agric Syst* 123:1–11. <https://doi.org/10.1016/j.agsy.2013.09.004>
- Rodenburg J, Saito K, Irakiza R et al (2015) Labor-saving weed technologies for lowland rice farmers in sub-Saharan Africa. *Weed Technol* 29:751–757. <https://doi.org/10.1614/WT-D-15-00016.1>
- Rufino MC, Tittonell P, van Wijk MT et al (2007) Manure as a key resource within smallholder farming systems: analysing farm-scale nutrient cycling efficiencies with the NUANCES framework. *Livest Sci* 112:273–287. <https://doi.org/10.1016/j.livsci.2007.09.011>
- Schulz E, Breulmann M, Boettger T et al (2011) Effect of organic matter input on functional pools of soil organic carbon in a long-term double rice crop experiment in China. *Eur J Soil Sci* 62:134–143. <https://doi.org/10.1111/j.1365-2389.2010.01330.x>
- Senthilkumar K, Bindraban PS, Thiyagarajan TM et al (2008) Modified rice cultivation in Tamil Nadu, India: yield gains and farmers' (lack of) acceptance. *Agric Syst* 98:82–94
- Senthilkumar K, Lubbers M, de Ridder N et al (2011) Policies to support economic and environmental goals at farm and regional scales: outcomes for rice farmers in Southern India depend on their resource endowment. *Agric Syst* 104:82–93
- Senthilkumar K, Bindraban PS, de Ridder N et al (2012) Impact of policies designed to enhance efficiency of water and nutrients on farm households varying in resource endowments in south India. *NJAS Wageningen J Life Sci*. <https://doi.org/10.1016/j.njas.2012.01.002>
- Tanaka A, Saito K, Azoma K, Kobayashi K (2013) Factors affecting variation in farm yields of irrigated lowland rice in southern-central Benin. *Eur J Agron* 44:46–53. <https://doi.org/10.1016/j.eja.2012.08.002>
- Tittonell P, Giller KE (2013) When yield gaps are poverty traps: the paradigm of ecological intensification in African smallholder agriculture. *Field Crop Res* 143:76–90. <https://doi.org/10.1016/j.fcr.2012.10.007>
- Touré A, Becker M, Johnson DE et al (2009) Response of lowland rice to agronomic management under different hydrological regimes in an inland valley of Ivory Coast. *Field Crop Res* 114:304–310. <https://doi.org/10.1016/j.fcr.2009.08.015>

- van Ittersum MK, van Bussel LGJ, Wolf J et al (2016) Can sub-Saharan Africa feed itself? *Proc Natl Acad Sci USA* 113:14964–14969. <https://doi.org/10.1073/pnas.1610359113>
- van Ranst E, Verloo M, Demeyer A, Pauwels JM (1999) Manual for the soil chemistry and fertility laboratory: analytical methods for soils and plants equipment, and management of consumables, 243 pp
- van Oort PAJ, Saito K, Tanaka A et al (2015) Assessment of rice self-sufficiency in 2025 in eight African countries. *Glob Food Secur* 5:39–49. <https://doi.org/10.1016/j.gfs.2015.01.002>
- Wopereis MCS, Defoer T, Idinoba P, et al (2007) Participatory learning and action research (PLAR) for integrated rice management (IRM) in Inland Valleys of Sub-Saharan Africa: Technical Manual. WARDA Training Series. WARDA, Bouaké, Côte d'Ivoire, and IFDC, Muscle Shoals, AL, USA, 136 pp
- Zimdahl R (2007) *Fundamentals of weed science*. Academic Press, London, p 666