



DEPTFORD

SMASHfestUK

15 - 20 FEBRUARY

SMASHfestUK

Welcome to SMASHfestUK 2016: SOLAR STORM!

We're delighted to be returning to Deptford this year with SMASHfestUK - a glorious, crazy 3-day FREE festival which is a mash-up of comedy, games, art, music, den-building, storytelling and much, much more for all ages.

Our pilot SMASHfestUK 2015: ASTEROID! was a huge success, entertaining over 1000 people over the course of the half-term holiday. The feedback from you was that you wanted us to come back again so we have. Even bigger and better than before.

SMASHfestUK was founded to encourage young people to interact with science, engineering, technology, maths, design, theatre, art, performance and music all at the same time in a way they would not usually experience. We devise all our events around a big story. This year the story is of a massive SOLAR STORM that has caused all of our electrical and electronic infrastructure to explode, throwing us back to the mechanical age. No more TV, no more video games, no more GPS, the transport system has ground to a halt...How will we create power? How can we harness other sources of energy to help build a new future? Come along and help us use science and creativity to solve this catastrophic problem!

www.smashfestuk.com

CONTENTS

BUILD A BATTERY COUNTDOWN	03
CRACKING THE CODE	04
CODE CLUB	05
COMEDY CLUB FOR KIDS	06
COSMIC VIBES	07
DIY OPEN SOURCE PLANETARIUM	08
THROWING SPANNERS AT NANOBOTS	09
DR DEATH	10
ELECTRIC PAINT WORKSHOPS	11
EMPE	12
SURVIVAL VILLAGE GEODESIC DOME	13
GLOWBAR	14
HUMAN POWER STATION	15
I'M WEARING MY THERMALS	16
LEVEL UP HUMAN	17
MUTANT CIRCUS	18
PHOTOVOLTAIC FRENZY	19
SECRET FILM CLUB	20
SMART MATHS TOWER GAME	21
SMART MATHS STRUCTURES	22
SOLAR GRAFITTI	23
SOLAR & LUNAR OBSERVING	24
SOLAR STORM EXHIBITION	25
SOLAR STORM ARTISTS	26
THE SUN AT NIGHT	27
SOLAR STORY TELLING	28
SUNDOWN SHOW	29
SURVIVAL VILLAGE DEN BUILDING	30
THE AMAZING SCENE MACHINE	31
THE GREAT BALL OF FIRE SHOW	32
THE MUTATION GENERATION UNIT	33
THE UGLY ANIMAL ROADSHOW	34
TRAVEL THROUGH A SOLAR STORM	35
UV+ME	36
ADDITIONAL INFO & JOIN US	37, 38 & 39
THANKS & COMING SOON	40, 41 & 42

SOLAR STORM SURVIVAL UNIT: BUILD A BATTERY COUNTDOWN

SMASHfestUK *WITH*

DR NATE, DR INDI & THE YOUNG SCIENCE EXPLAINERS

Thursday 2-6PM, Friday & Saturday 10AM-6PM

VENUE: THE ALBANY | GARDEN

Build A Battery Countdown

The enormous solar storm has induced electrical currents in every electronic circuit, causing them to go up in flames. We have no electricity, no power, no light and no heat. *Can you create power from just the things you find on the SSSU shelves?*

In our Countdown style matching game, pick one from the top, two from the middle and two from the bottom to see if your components can generate electricity before the countdown clock runs out!

The catch? **This is the food store!** We have available a selection of drinks, vegetables and a few bits and pieces of DIY hardware...think that's enough to power a LED to see with? Or a radio to make contact with the outside world? - think again and **try to beat the clock AND the voltmeter.** Will it be enough to charge up your Nintendo DS? Find out inside!

Age range: Suitable for ages 6-16

Children must be supervised by parents/carers at all times



CRACKING THE CODE THE GENETICS OF SUPERHEROES

READY STEADY SCIENCE

Thursday | Friday | Saturday 4PM

VENUE: THE ALBANY THEATRE | RED ROOM

The comic books are filled with mutants; heroes and villains whose special abilities are genetic in their origin. But *what are real mutants like*, and one day *could we use genetics to make us superhuman*? Join Simon Watt to find out if you are a mutant too.

Age range: Suitable for ages 7+

Children must be supervised by parents/carers at all times

TICKETED



SMASHfestUK CODE CLUB

Thursday, Friday & Saturday 10-11:30AM

VENUE: DEPTFORD LOUNGE

Join the **SMASHfestUK Code Club** and start to learn how to create animations, games, websites and much more. In these one-off taster sessions we will work through a project where the children will create an animation using the *Scratch* programming language.

Code Club is a nationwide network of free volunteer-led coding clubs for children aged 9-11.

Age range: Suitable for beginners aged 9-11

Children must have appropriate permission from a parent/guardian to attend

TICKETED | 10 SPACES PER WORKSHOP



COMEDY CLUB 4 KIDS

Friday 11AM | Saturday 12PM

VENUE: THE ALBANY THEATRE

Comedy Club 4 Kids gets the best stand-ups and sketch acts from the international circuit to do their thing for an audience of children and their families... but **without the rude bits!** The show is **family friendly**, but without any patronising idiocy. In fact, it's just like a normal comedy club, but it's in the daytime, kids are allowed in and thus here is a higher than usual chance of heckles like "why is that your face!?" Our SMASHfestUK shows will be even more special than usual, as the comics will be talking about solar storms as well as carefully not saying any word ruder than "bum". It's a comedy club, right, but for kids and any adults who enjoy a **swear-free hour** with ace acts.

Come down and laugh your way into SMASHfestUK!

Age range: Suitable for ages 6+

Children must be supervised by parents/carers at all times

TICKETED



COSMIC VIBES

PREMIERE OF A NEW PLAY BY REBECCA MANLEY

Thursday 3PM, Friday 1PM & 3PM Saturday 3PM & 6PM

VENUE: THE ALBANY | STUDIO

Rory doesn't like doing what is expected of her. When she's told science is for boys and people like her don't go to university something explodes quietly inside her and she is determined to prove everyone wrong. But she is stopped in her tracks when she hears of an eruption elsewhere, on the surface of the sun. And Rory knows more than most 17 year olds what this might mean for Deptford and way way beyond.

A cast of young local actors bring to life this new play that asks what might happen if a solar storm hits the earth. Expect playful and wholly subjective musings on astrophysics, the Matilda effect and rubber chickens.

Age range: Suitable for ages 9+

Children must be supervised by parents/carers at all times

TICKETED



DIY OPEN SOURCE PLANETARIUM

ALEKSANDER ZIVANOVIC & WYN GRIFFITHS

Monday - Saturday 10AM-5PM
VENUE: DEPTFORD LOUNGE

How do we prepare for a Solar Storm? One way is to understand the Sun, our solar system and the cosmos in general. London currently has just one Planetarium, a place where we can immerse ourselves in the wonder of the cosmos. SMASHfestUK will bring you London's 2nd Planetarium! An **Open-Source DIY Planetarium**, at that. We'll be building a geodesic dome from upcycled materials, and using a London underground convex mirror, standard laptop, projector and open-source mapping software to create a planetarium in the Deptford Lounge.

Join us to experience the shows and to find out how to build your own (with a small material cost and some time and effort).

Lie back and gaze up at the stars...inside, during the day... Find out about our Solar System, what we can see in the skies from Earth...*the wonders and terrors of the universe!*

Age range: Suitable for ages 5+

Children must be supervised by parents/carers at all times

DR NATE THROWING SPANNERS AT NANOBOTS

UNIVERSITY OF SHEFFIELD

Friday 2PM

VENUE: THE ALBANY | THEATRE

Without plants the human race couldn't survive on the planet - we need **nanobots** for that!

Nanobots work furiously and specifically to produce the products required for a plant to respire, respond and reproduce. Using his research, Dr Nate Adams dissects the roles of **nanobots** in making plants green and, using exciting demonstrations (with fire and explosives!) brings photosynthesis, chemistry and spectroscopy to life on a big scale. Join him and *understand how the work of nanobots helps food security and sustainability.*

Age range: Suitable for ages 7+

Children must be supervised by parents/carers at all times

TICKETED

DR DEATH & THE MEDI-EVIL MEDICINE SHOW

READY STEADY SCIENCE

Thursday 2PM | Friday 12PM | Saturday 11AM
VENUE: THE ALBANY | RED ROOM

A historically, scientifically accurate panto for children and other childish people. *Sneezes, wheezes, sickness* and *diseases* are never welcome. But in the past, some of the treatments could be worse than the underlying illness. Join the time-travelling 'Doctor Death', Simon Watt, to see if he can 'cure' you.

Warning: This show promises blood, guts, gore and a lot more!

Age range: Suitable for ages 6+
Children must be supervised by parents/carers at all times

TICKETED



THE ELECTRIC PAINT WORKSHOP

SMASHfestUK: SINEAD KEMPLEY

Friday & Saturday 10-11:30AM

VENUE: THE ALBANY | ORANGE ROOM

Use **electric paint** and **recycled materials** to **create simple circuits** which will light up Deptford after the solar storm has wiped out all electricity. We will also be recording and adding sounds into the mini Deptford we build using sensors, electric paint and a touch board. This means that when someone touches the different parts of our 3D world it will make a noise!

In these one-off workshops you will find out about **insulating** and **conductive materials** (including conductive paint), **how to record sound** & **how to use a sensor and touch board** to add sound into a sculpture or paper project.

Join in and help bring light and sound back to Deptford after the solar storm has wiped out electricity using electric paint, LEDs and sensors!

Age range: Suitable for ages 7+

This is a family workshop.

Children must be supervised by parents/carers at all times

TICKETED: 10 SPACES PER WORKSHOP



EMPE: THE MECHANICAL MOBILE PHONE EXOSKELETON

MIDDLESEX UNIVERSITY PRODUCT DESIGN FINAL YEAR STUDENTS
& WYN GRIFFITHS, SPIKE MELTON & COLIN MOSS

Monday - Saturday 10AM-5PM

VENUE: DEPTFORD LOUNGE

Under threat from a massive solar storm, the world faces destruction of all electronic and electrical infrastructure, throwing us back into the mechanical age while we rebuild. The mobile phone has become an icon of our current world. Practically invaluable and emotionally cherished. What would happen if all our mobile phones were destroyed? ***How could we recreate the key functions of the mobile phone, using mechanical technology?*** Come to Deptford Lounge and get into **Empe to find out!** How can you 'phone a friend', take a photo, watch a film, play music, share your thoughts on social media...without electronics?! Empe takes you into a mechanical world of unexpected answers...

Age range: Suitable for all ages

Children must be supervised by parents/carers at all times

SMASHfestUK SURVIVAL BUILDING 'GREAT HALL' GEODESIC DOME

ALEKSANDER ZIVANOVIC & WYN GRIFFITHS

Thursday 2-6PM, Friday & Saturday 10AM-6PM

VENUE: THE ALBANY | GARDEN

Our technology infrastructure collapses. There's chaos! Riots, fire, destruction. How can we rebuild from the waste? We'll be constructing a 'Survival Village' in the Albany Theatre Garden and at its centre, a 'Great Hall' in the form of a geodesic dome, made from upcycled plumbing pipe and an old parachute.

Gather in the dome, plan your dens outside, try out SMART structures...
rebuild the world!

Age range: Suitable for ages 5+

Children must be supervised by parents/carers at all times



SOLAR STORM SURVIVAL UNIT: GLOW BAR

SMASHfestUK WITH
DR NATE, DR INDI & THE YOUNG SCIENCE EXPLAINERS

Thursday 2-6pm, Friday & Saturday | 10AM-6PM

VENUE: THE ALBANY | GARDEN | SSSU

As if it wasn't bad enough being without electric power during the daytime, it also means we've been plunged into inky darkness at night! What can we possibly do to see us through the hours of winter blackness late at night?

Well some might suggest you could drink your cares away, in our amazing **Glow In The Dark Kids Cocktail Bar**. First of all find out where on the electromagnetic spectrum we are and **play our energy bar stool game to find out why some things will glow under UV light and others just don't**.

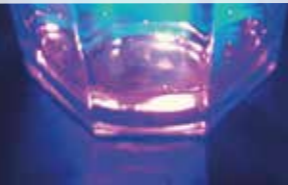
Not only will our fluorescent bar staff show you the art of glow in the dark mixology where you can create your own glowing cocktails, but you can also investigate **how chemicals can react together to produce light**...no electricity required! All this and take home your own glow in the dark lantern... With fluorescent face-painting and secret spy UV ink writing, there's no end of chemical craziness at the **Glow Bar!**

Age range: Suitable for all ages

Children must be supervised by parents/carers at all times

Dim lighting, care must be taken.

All drinks are non-alcoholic and safe for children.



SOLAR STORM SURVIVAL UNIT HUMAN POWER STATION

ALEKSANDER ZIVANOVIC, WYN GRIFFITHS, SPIKE MELTON & COLIN MOSS

Thursday 2-6PM | Friday & Saturday 10AM-6PM

VENUE: THE ALBANY | GARDEN

The power has gone. We're in the dark. We're cold. The Solar Storm Survival Unit in the garden of the Albany will be making light and creating power to help us rescue our technological lives from disaster. . **Do you think you can pedal your way to charging your mobile phone?**

What about your hairdryer? Your tablet? Can pedal power save us?

Pedal your way to the top of the 'Powerboard'. Collaborate with a partner to pump the power even higher!

Age range: Suitable for ages 8+

Children must be supervised by parents/carers at all times

I'M WEARING MY THERMALS

**SMASHfestUK WITH
DR NATE, DR INDI & THE YOUNG SCIENCE EXPLAINERS**

Thursday 2-6PM | Friday & Saturday 10AM-6PM

VENUE: THE ALBANY | YELLOW ROOM

This is an epic game of hide-and-seek using only the heat from your body as the signal that will give away your hiding place. Will you find a thermal hidey-hole to tuck yourself inside before the seeker comes looking with their thermal imaging camera? We will discover tricks and traps that can help you hide or give you away – all using the power of the electromagnetic spectrum. Is it a game of smoke and mirrors? Or will it blow hot or cold? You decide your strategy in this SMASHfestUK game of cat and mouse!

Age range: Suitable for ages 7+

Children must be supervised by parents/carers at all times



LEVEL UP HUMAN

SIMON WATT *PLUS GUESTS*

DAN SCHREIBER, SOPHIE SCOTT & FRANK SWAIN

Saturday 7PM

VENUE: THE ALBANY THEATRE

Evolution has gotten lazy and needs a prod. My life would be so much better if it had more tentacles or a prehensile face. Combining gene splicing and trans-humanism, medical advancement and surgical enhancement, biology and ambition, Level Up Human takes a **light hearted look** at *what it means to be human*, and *what the alternatives might be*. Join Simon Watt and guests Dan Schreiber, Sophie Scott and Frank Swain for the live recording of an exciting new podcast series.

Age range: Suitable for ages 14+

Children must be supervised by parents/carers at all times

THIS SHOW WILL BE RECORDED & BROADCAST AS A PODCAST

LEVEL UP HUMAN



MUTANT CIRCUS

GUERRILLA SCIENCE

Friday & Saturday 10AM-6PM

VENUE: THE ALBANY | ROVING PERFORMERS

Roll up, roll up! An array of **human-sized fruit flies** is coming to Deptford. Step right up for your chance to meet our troupe of colourful characters as they showcase their remarkable abilities for your entertainment and astonishment. Hairy marvels! Eyeless wonders! Deformed monstrosities! All in the form of... the humble **fruit fly**. For over 100 years **fruit flies** have been the workhorse of geneticists, casting light on the role of genes in driving development and revealing fascinating insights into human biology. Find the **giant fruit flies** and be amazed by the stories from these unsung heroes of scientific research today!

Age range: Suitable for ages 4+

Children must be supervised by parents/carers at all times



SOLAR STORM SURVIVAL UNIT PHOTOVOLTAIC FRENZY

**SMASHfestUK WITH
DR NATE, DR INDI & THE YOUNG SCIENCE EXPLAINERS**

Thursday 2-6PM | Friday & Saturday 10AM-6PM

VENUE: THE ALBANY | GARDEN |

When the sun is bombarding us with so much energy its caused our electrics and electronics to fizzle and burn out – you'd think that if we could just harness some of that daylight energy, we might be able to make up for losing the National Grid! In **Photovoltaic Frenzy** you can do just that!

Build machines, cars and robots that can race one another using only the power of the sun, but be careful you don't end up in the valley of darkness – if the light can't reach you, its going to be a dead end!

Also race to see how who can create the most Oxygen from just a scraggy old piece of pond weed!

Age range: Suitable for ages 7+

Children must be supervised by parents/carers at all times

SMASHfestUK SECRET FILM CLUB

Tuesday, Thursday & Saturday 2:30PM

VENUE: DEPTFORD LOUNGE

Join the SMASHfestUK film club for a festival season of mystery films.
Watch out for aliens, robots & the power of steam....

Age range: From U to PG rated films

Children must be supervised by parents/carers at all times



SMART STRUCTURES MATHS TOWER CHALLENGE

MIDDLESEX UNIVERSITY MATHS TEAM

Monday - Saturday 10AM-5PM

VENUE: DEPTFORD LOUNGE

We're used to grabbing for electronics to while away the hours, but what happens when the Solar Storm burns them all out? Once the chaos settles, we'll need some entertainment, so join in with our mechanical gaming challenge. Join the challenge to be the fastest (or the slowest) in our tower game.

Build and modify your own sliding 'monkey' to make its way down our towers. Try to get on to the leader boards on this addictive gaming challenge.

Age range: Suitable for ages 4+

Children must be supervised by parents/carers at all times



SMASHfestUK SURVIVAL VILLAGE SMART MATHS STRUCTURES

MIDDLESEX UNIVERSITY MATHS TEAM

Thursday 2-6PM, Friday & Saturday 10AM-6PM

VENUE: THE ALBANY | GARDEN

With resources scarce, and with no electronics to help with the design, how do we rebuild the world? The **Middlesex University maths team** will be helping you *build creative smart structures*, that could create new types of shelter and housing, and on Friday and Saturday you can join them to build a giant fractal pyramid!

Build amazing structures using the Zomes kit.
Work together to build a giant fractal pyramid...

Age range: Suitable for ages 5+

Children must be supervised by parents/carers at all times



SOLAR GRAFFITI

LUKE BRABANTS & JENNY EDBROOKE

Monday & Tuesday 10AM-5PM

VENUE: GIFFIN SQUARE & DEPTFORD LOUNGE | DROP IN

Graffiti artist Luke Brabants transforms buildings, vans, skateboards and anything he can paint on into stunning works of art using spray paints.

Working alongside SMASHfestUK resident artist Jenny Edbrooke, Luke needs your help to **create a large mural depicting an epic solar storm that will rock this world**. Feel free to come and test out your skills using spray cans or to learn tips of how to create awesome graffiti creations for yourself.

Age range: Suitable for 9+

Children must be supervised by parents/carers at all times

All spray paints used in the workshops are non-toxic water based paints

This event is weather dependent



SOLAR & LUNAR OBSERVING

FLAMSTEED ASTRONOMY SOCIETY

SOLAR OBSERVING **Friday & Saturday 12-3PM**
LUNAR OBSERVING **Friday 3-6PM & Saturday 3-8PM**

VENUE: THE ALBANY | GARDEN

Take up a rare opportunity to view the turbulent surface of the Sun through specialist solar telescopes that make it possible to **see the flares and prominences at the edges of the Sun's disc**, as well as the **sunspots** and other magnetic disturbances on the surface.

When the Sun sets, viewing switches to the Moon through high-powered telescopes, enabling visitors to **see close-up views of craters and ancient lava flows**.

The Flamsteed Astronomy Society is the amateur astronomy society affiliated to the Royal Observatory Greenwich.

Age range: Suitable for all ages

Children must be supervised by parents/carers at all times.
WARNING - DO NOT look directly at the sun.



SOLAR STORM EXHIBITION



ROYAL OBSERVATORY GREENWICH & SMASHfestUK

Monday - Saturday 10AM-5PM

VENUE: DEPTFORD LOUNGE

'What is the Sun?', 'Why is the Sun so big and bright?' 'How does the Sun affect the Earth?'

This illuminating exhibition answers these questions and many more in a series of images that will help you to understand our nearest star, the Sun. It includes stunning NASA pictures of corona, coronal mass ejections and the aurora, impossible to see with the naked eye.

Age range: Suitable for ages 7+

Children must be supervised by parents/carers at all times

SOLAR STORM ARTISTS

SMASHfestUK ARTIST IN RESIDENCE
JENNY EDBROOKE

Monday - Saturday 10AM-5PM
VENUE: DEPTFORD LOUNGE | DROP IN

Drop into the Deptford Lounge for a chance to create some solar storm art. Let your imagination run free in making a range of weird and wonderful inventions to protect planet earth from possible eruptions from the sun. We will need to create magnetic force fields, make arty radiation-proof outfits, design solar storm proof shelters as well as making art that could communicate with any UFOs that might be attracted by the solar storm!

You can take your creations home or add them to the grand graffiti art mural of the pending solar storm at the front of The Deptford Lounge.

Age range: Suitable for ages 4+
Children must be supervised by parents/carers at all times



THE SUN AT NIGHT

DAVID HENCKEL

Thursday and Saturday 5-10PM [Drop-in]

VENUE: OUR LADY OF THE ASSUMPTION CHURCH, DEPTFORD HIGH ST

Experience a year in the life of our nearest star as you have never seen or heard it before.

The **Sun at Night** is a touring installation that creatively explores our relationship to the Sun utilising the research and stunning images taken by NASA's Solar Dynamics Observatory. **Science & technology meet art and religion** in a moving work that offers a space for contemplation and reflection on our place in the universe.

Age range: Suitable for all ages

Children must be supervised by parents/carers at all times



SOLAR STORYTELLING

Monday 11:15AM Wednesday 2:15PM

VENUE: DEPTFORD LOUNGE

Come to the Deptford Lounge and hear *stories* about the wonder of the sun, the moon and the whole solar system.

Age range: Suitable for under 5s

Children must be supervised by parents/carers at all times

SUNDOWN SHOW

SMASHfestUK *HOST STAND UP POET*
LAURIE BOLGER

Saturday 4PM

VENUE: THE ALBANY | THEATRE

A smash-up of Deptford talent, variety acts & the fabulous Poetry Takeaway celebrate how fabulous our sun is and how life on earth depends on this amazing ball of energy. Bring your sun-soaked ideas to help write an original SMASHfestUK Solar Storm poem to close the festival with flare!

Come and live it up and at the Albany as the sun goes down on SMASHfestUK 2016.

Age range: Suitable for 10+

Children must be supervised by parents/carers at all times



SMASHfestUK SURVIVAL VILLAGE DEN BUILDING

Friday & Saturday 10AM-6PM

VENUE: THE ALBANY | GARDEN - DROP IN

The Den Experiment

Have you got what it takes to survive? Can you follow instructions and use a compass to mark x on the map so you know where you've ended up?

Come along and have a go at building your own shelter to stay warm and dry. **Learn map reading and compass skills** as we build the SMASHfestUK survival village.

Age range: Suitable for all ages

Children must be supervised by parents/carers at all times



THE AMAZING SCENE MACHINE

JIM PARKYN

Friday & Saturday | 10AM-6PM

VENUE: THE ALBANY THEATRE | CAFÉ - DROP IN

As Deptford feels the impact of the solar storm, join animation artist Jim Parkyn to model a self-portrait & put yourself in the heart of the action.

Then watch as an animated film of the SMASHfestUK solar storm, starring your own figure, grows before your eyes.

Age range: Suitable for ages 5+

Children must be supervised by parents/carers at all times



THE GREAT BALL OF FIRE SHOW

SMASHfestUK *HOST*
STAND UP COMEDIAN TIERNAN DOUIEB

Friday 5PM
VENUE: THE ALBANY THEATRE

A live entertainment show wrapped around a solar storm. Sit back as the SMASHfestUK line-up of top performers combine science, stand-up and their own particular flare to create a great ball of comedy gold. Starring Ben Van Der Velde, Howard Read, Sophie Scott, Simon Watt & Jen Gupta.

Age range: Suitable for ages 10+
Children must be supervised by parents/carers at all times



THE MUTATION GENERATION UNIT

NICHOLAS THOMPSON

Thursday 2-6PM, Friday & Saturday 10AM-6PM

Film & TV Special FX talk Friday 3PM, Saturday 4PM

VENUE: THE ALBANY | BLUE ROOM

After playing **UV & ME**, head down to the **Mutation Generation Unit** where our professional film and television special effects artist will give you a mutation of your choice: *an extra finger or a third eye?* Turn into a mutant while absorbing a load of fascinating stuff about radiation and UV safety.

Age range: Suitable for ages 6+

Children must be supervised by parents/carers at all times

TICKETED

Bookable with the **Mutation Generation** Receptionists



THE UGLY ANIMAL ROAD SHOW

UGLY ANIMAL PRESERVATION SOCIETY

Friday & Saturday 2PM

VENUE: THE ALBANY | RED ROOM

Why should the panda get all the praise?

The Ugly Animal Preservation Society is dedicated to raising the profile of the world's most aesthetically challenged endangered species. Join Simon Watt for a performance that celebrates and explores the **incredible biology** of the animal kingdom's most *monstrous*.

Age range: Suitable for all ages

Children must be supervised by parents/carers at all times

TICKETED



TRAVEL THROUGH A SOLAR STORM: AN IMMERSIVE VIRTUAL REALITY EXPERIENCE

DR MIHO JANVIER

Friday & Saturday 10AM-6PM

VENUE: THE ALBANY | ORANGE ROOM - DROP IN

An immersive 3D experience to witness the birth and journey of a solar storm from the Sun to the Earth.

Solar Storm VR is a 3D immersive, high quality cinematographic experience of what it feels like to travel through a solar storm. Be an astronaut and travel in space to witness the birth and the journey of the storm. The experience uses science data from NASA and ESA space missions.

Plus come and mess around with some magnets and try writing a sunshine Haiku.

Age range: Suitable for ages 9+

Children must be supervised by parents/carers at all times

DR MIHO JANVIER VIRTUAL REALITY TALK: Friday 4PM Saturday 3PM

Virtual headset may not be suitable for a people who are sensitive to strong flashes and motion sickness

TICKETED



UV+ME

SMASHfestUK

Thursday 2-6pm, Friday & Saturday | 10AM-6PM

VENUE: THE ALBANY | ROVING

The sun is our friend – or so we thought! It emits rays in the form of ultra violet radiation: UV is important for our health, but everyone knows what happens if you get too much sunshine... IT BURNS! And during the Great Deptford Solar Storm of 2016, more UV radiation than normal has been pushed to the Earth....

UV + ME is a game that's part luck, part strategy and all fun – every time you are exposed to one of our walking, talking SOLAR FLARES you'll receive a dose of "UV"*** which will mark you with invisible ink. ***not real UV radiation*

In order to see what "dose" you've received, you'll have to visit the Glow Bar or the Dark Side of the Light, our two special UV rooms, where the mark will become visible.

If you're lucky – you'll have a healthy dose of Vitamin D, but if you're unlucky, and you are "Marked for Mutation" a visit to the MUTATION GENERATION UNIT is in store!

Age range: Suitable for ages 5+

Children must be supervised by parents/carers at all times
UV reactive invisible ink is non-toxic but should be avoided by those with sensitive skins.

ACADEMIC PARTNERSHIPS

SMASHfestUK was founded with the support of Middlesex University. The festival & outreach programme is in an on-going partnership with the university and we are developing our relationship with the University of Greenwich. Students from both institutions work as volunteers on the festival, offering support & mentoring to younger volunteers and the SMASHfestUK audience.

We aim to build more university/ community partnerships in the future to bring SMASHfestUK to communities across London and the UK.



**Middlesex
University
London**



**UNIVERSITY
of
GREENWICH**

SUPPORTERS

Our Pilot year and onwards could not have happened without the belief and generosity of our SMASHfestUK Year One supporters our sponsors and partners.

A huge thank you to our supporters:

*Karl Griffiths
Peter Mercer
Leah Griffiths
Wendy Meharg
Matt Jones
Richard Watts
Kay Keith
Nik Butler
Ruth Kind
Gary Povey
Ben Arent
Michael Silverberg
Alvin Munzi
Claire Ayeni
Jonathan Tew
Yasmin Ali
Olly Moore
Andy Watson
Trevor Haldenby
Philippa Barr
Michail Raasch
Madeleine Kelly
Razvain Danaila
Emily James
Thomas Booth*



welcometrust



LOTTERY FUNDED

Supported using public funding by

**ARTS COUNCIL
ENGLAND**



**Science & Technology
Facilities Council**



**UNIVERSITY
of
GREENWICH**



MINI-SMASHES

SMASHfestUK can deliver a mini-festival or workshop at your school or youth or community setting. Get in touch if you would like to find out more.

OUTREACH

SMASHfestUK is working with 9 local schools and colleges, delivering assemblies, workshops & support. If your school or college would like to find out more about how we can engage your students, please get in touch.

BOOKING POLICY

In order to make SMASHfestUK accessible to as many people as possible, the festival is free and 20% of tickets are unbookable so you can drop-in from an hour before your event and pick up a ticket, without booking ahead.

Children must be supervised by parents/carers at all times. SMASHfestUK gives no warranty to the accuracy of the information in this programme and accepts no liability for any loss, damage or inconvenience that may be caused in the event that inaccurate information appears on it. Every attempt has been made to present up-to-date, accurate information. Information may be changed or updated without notice.

Contact:

info@smashfestuk.com

www.smashfestuk.com

SMASHfestUK is a not-for-profit community organisation

YOUNG SCIENCE EXPLAINERS

We are running our inaugural SMASHfestUK Young Science Explainers Programme this year. Twenty 16-18 year olds from the local community are assisting in the facilitation of events and running of the festival, explaining the STEM within our activities to younger children. The aim of the scheme is to give the YSE ownership of the festival, deepen their understanding of STEM, enable them to learn about public engagement & encourage them to consider studying and working in STEM careers. You will see them around the festival. Got a question? Ask a YSE...

VOLUNTEER PROGRAMME

We have a team of adult volunteers from the local community assisting in all areas of the festival this year. We could not run the festival without them and we are enormously grateful for their support.

SMASHfestUK

JOIN US

Booking

Albany website

20% of all tickets reserved for drop-in.

Collection an hour before the performance start time.



THE ALBANY THEATRE
Douglas Way SE8 4AG
18th -20th February

OUR LADY OF THE ASSUMPTION CHURCH
18th & 20th February

DEPTFORD LOUNGE
9 Giffin Street SE8
15th -20th February

TIMES

Monday to Saturday

Deptford Lounge

10am - 5pm

Thursday

The Albany

2pm - 6pm

Friday & Saturday

The Albany

10am-6pm