

# SUPERVOLCANO 2017

# SMASHfestUK



FREE!

Half  
Term

A BIG ADVENTURE for all the family - Comedy, music, performance, arts, crafts, science, engineering, games, activities, experiments...

Deptford Lounge Albany, Deptford  
13-17th February 16th & 17th February  
10-4pm 10-4pm

Information:  
<http://www.thealbany.org.uk/>

SMASHfestUK

## PROGRAMME

[smashfestuk.com](http://smashfestuk.com)



# SMASHFESTUK

Welcome to SMASHfestUK 2017: Supervolcano

We're delighted to be returning to Deptford this year with SMASHfestUK - a glorious, crazy 5-day FREE festival. It's a mash-up of comedy, games, art, music, den-building, storytelling and much, much more for all ages.

Last year SMASHfestUK 2016: SOLAR STORM was a huge success, entertaining nearly 2000 people over the course of February half-term. The feedback from you was that you wanted us to come back again, so we have. Even bigger and better than before.

SMASHfestUK was founded to encourage young people to interact with science, engineering, technology, maths, design, theatre, art, performance and music all at the same time in a way they might not usually experience. We devise all our events around a big story. Unbeknownst to Deptford a Supervolcano is bubbling under Lewisham and things are going to get hot. SMASHfestUK explores how to survive when the world explodes and is smothered in ash. Come along and help us use science and creativity to solve this catastrophic problem!

EVENTS WILL TAKE PLACE AT BOTH THE ALBANY AND DEPTFORD LOUNGE.

CONTENTS

Schedule	3 & 4
Volcano Experience	5
Survival Supermarket Sweep	6
Information Stand	7
Jenny Edbrooke	7
Graffiti Volcano Teepee	8
Open Book Project	9
SMASHfestUK Secret Film Club	9
Cryovolcano	10
SMASHfestUK Special Pass	11
Dr Death and Medi-Evil Medecine	12
Think You Can Survive?	13
Space Adventures	13
Utterly Amazing Volcanoes in Space	14
The Rap and Folk SMASHup	15
How Big is Your Bang?	16
The Scientific Secrets of Doctor Who	17
Survival Science	18
Comedy Club for Kids	19
Rupture	20
SMASHfest SMASHUP	21
Project Doomsday	22
We Did Start the Fire	23
Fire Mountain Show	24
Escape the Volcano	25
Extreme Escape Artists	26
CSI Volcano	26
Robot Rescue!	27
Sunshine Powers The Way!	27
VR Volcano	28
Volcano Detection Unit	28
Survival Village	29
Volcano Prediction Centre	29
PIPING PANIC! Water Supply	30
Clean Water Challenge	31
Heat Your Home	31
Victor the Volcano	32
Rebuild! Maths and Engineering structures	33
Volcano Survival Centre	34
Farm Lab	34
Den-Building	35
Mask Decorating	36
Microscopes	36
Neon Mountain	37
Stone Explorers	38
Volcanologists	38

# THE ALBANY - THURSDAY SCHEDULE

TIME	ACTIVITY	TICKET DETAILS
<b>AUDITORIUM</b>		
10:00-11:00	COMEDY CLUB 4 KIDS	TICKETS – PAY AS YOU FEEL
12:00-13:00	RUPTURE (PLAY)	TICKETS – PAY AS YOU FEEL
14:00-15:00	SMASHUP	TICKETS – PAY AS YOU FEEL
16:00-17:00	PROJECT DOOMSDAY	TICKETS – PAY AS YOU FEEL
19:00-21:30	WE DID START THE FIRE	TICKETS – PAY AS YOU FEEL

<b>RED ROOM</b>		
10:30-11:30	DR DEATH & MEDI-EVIL MEDICINE	TICKETS – PAY AS YOU FEEL
12:00-13:00	SURVIVAL SCIENCE	TICKETS – PAY AS YOU FEEL
13:30-14:30	SPACE ADVENTURES	TICKETS – PAY AS YOU FEEL
15:00-16:00	UTTERLY AMAZING VOLCANOES IN SPACE	TICKETS – PAY AS YOU FEEL

<b>BLUE ROOM</b>		
10:00-16:00	VR VOLCANO	DROP IN – 10-4PM
10:00-16:00	VOLCANO EXHIBITION	DROP IN – 10-4PM
10:00-16:00	SPECTROSCOPY IN A SUITCASE	DROP IN – 10-4PM

<b>ORANGE ROOM</b>		
10:00-16:00	EXTREME ESCAPE ARTISTS	DROP IN – 10-4PM
10:00-16:00	CSI VOLCANO	DROP IN – 10-4PM
10:00-16:00	ROBOT RESCUE	DROP IN – 10-4PM

<b>YELLOW ROOM</b>		
10:00-16:00	ESCAPE THE VOLCANO	DROP IN – 10-4PM

# THE ALBANY - FRIDAY SCHEDULE

TIME	ACTIVITY	TICKET DETAILS
<b>AUDITORIUM</b>		
10:00- 11:00	COMEDY CLUB 4 KIDS	TICKETS – PAY AS YOU FEEL
12:30- 13:30	RUPTURE (PLAY)	TICKETS – PAY AS YOU FEEL
14:30- 15:30	FIRE MOUNTAIN SHOW	TICKETS – PAY AS YOU FEEL

<b>RED ROOM</b>		
10:30- 11:30	THE RAP AND FOLK SMASHUP	TICKETS – PAY AS YOU FEEL
12:00- 13:00	HOW BIG IS YOUR BANG	TICKETS – PAY AS YOU FEEL
13:30- 14:30	THE SCIENTIFIC SECRETS OF DR WHO	TICKETS – PAY AS YOU FEEL
15:00- 16:00	CAN YOU SURVIVE?	TICKETS – PAY AS YOU FEEL

<b>BLUE ROOM</b>		
10:00- 16:00	VR VOLCANO	DROP IN – 10-4PM
10:00- 16:00	VOLCANO EXHIBITION	DROP IN – 10-4PM
10:00- 16:00	SPECTROSCOPY IN A SUITCASE	DROP IN – 10-4PM

<b>ORANGE ROOM</b>		
10:00- 16:00	EXTREME ESCAPE ARTISTS	DROP IN – 10-4PM
10:00- 16:00	CSI VOLCANO	DROP IN – 10-4PM
10:00- 16:00	SOLAR CARS	DROP IN – 10-4PM

<b>YELLOW ROOM</b>		
10:00- 16:00	ESCAPE THE VOLCANO	DROP IN – 10-4PM

# VOLCANO EXPERIENCE

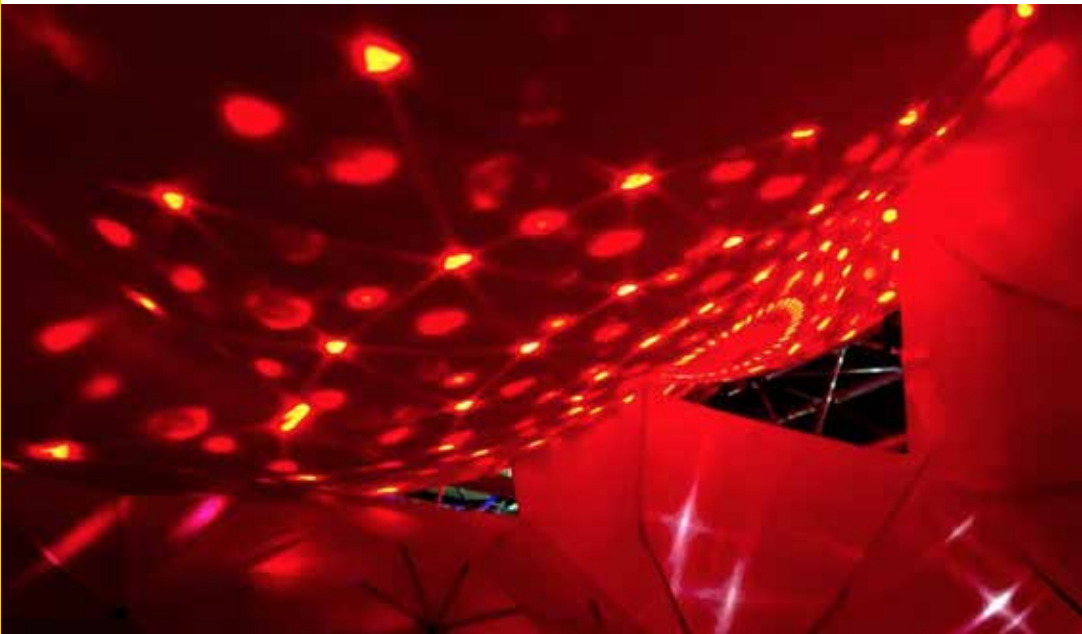
MIDDLESEX UNIVERSITY PRODUCT DESIGN. VOICES: AFOKE, MIA, TIRION, YUNA.

MONDAY TO FRIDAY 10AM – 4PM

VENUE: DEPTFORD LOUNGE: CAFÉ: DROP IN

## FREE!

Enter the belly of the beast! Inside our volcano styled temple, fashioned from upcycled materials, listen to the stories of people who have lived through and survived real volcanic eruptions. Could you survive? Imagine what it would be like if a real volcano erupted in Deptford!



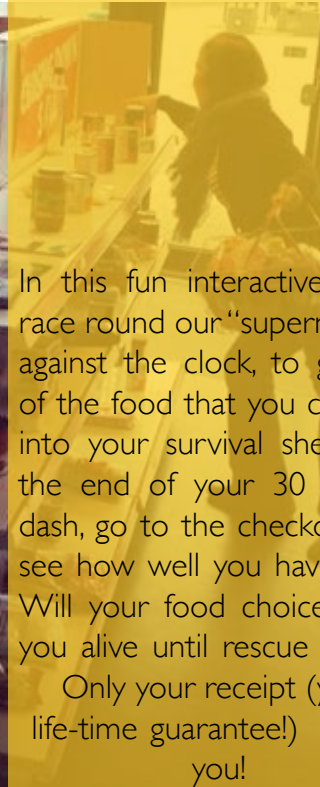
# SURVIVAL SUPERMARKET SWEEP

MONDAY TO FRIDAY

10AM – 4PM

VENUE: DEPTFORD LOUNGE: DROP IN

## FREE!



In this fun interactive game, race round our “supermarket” against the clock, to grab all of the food that you can take into your survival shelter. At the end of your 30 second dash, go to the checkout and see how well you have fared. Will your food choices keep you alive until rescue comes?

Only your receipt (your life-time guarantee!) will tell you!

# INFORMATION STAND

MONDAY TO FRIDAY 10AM – 4PM

VENUE: DEPTFORD LOUNGE: CAFÉ: DROP IN



Want to know where to go, what to do and what to see? Our information stand has all the answers. Come visit us and we will tell you where to go... but in a nice way!

## JENNY EDBROOKE

LUKE BRABANTS & JENNY EDBROOKE

MONDAY TO FRIDAY 10AM – 4PM



As Deptford disappears under a cloud of volcanic ash, hide out with SMASHfestUK artist-in-residence Jenny Edbrooke in the Deptford Lounge and create some artistic eruptions of your own. Let your imagination run free in making a range of fantastic volcano themed art. Take home your volcanic creations to remind you of this year's SMASHfestUK adventure.



# GRAFFITI VOLCANO TEEPEE

Graffiti artist Luke Brabants creates stunning visions using spray paints to transform buildings, vans, skateboards and anything else he can paint on.

Working alongside SMASHfestUK resident artist Jenny Edbroke, Luke needs your help to make epic volcanoes that will rock this world. Come and test out your skills using spray cans or learn tips on how to create awesome graffiti yourself.

**MONDAY, TUESDAY &  
WEDNESDAY 10AM-4PM**  
**VENUE: GIFFIN SQUARE  
& DEPTFORD LOUNGE:**  
**DROP IN**

## VOLCANIC GRAFFITI



**AGE RANGE: SUITABLE FOR  
AGES 8+**

**CHILDREN MUST BE SUPERVISED  
BY PARENTS/CARERS AT ALL TIME.**

**ALL SPRAY PAINTS USED IN THESE  
OUTDOOR WORKSHOPS ARE  
NON-TOXIC WATER BASED PAINTS.  
THE EVENT IS WEATHER DEPENDENT.**

# OPEN BOOK PROJECT

DROP IN SESSIONS OF CREATIVE WRITING AND  
ARTS AND CRAFTS.

**THURSDAY 17TH - FOR EXACT TIMINGS VISIT THE VOLCANO  
INFORMATION DESK**

Set up by Goldsmiths University this project aims to aid everyone to reach their academic potential through reading and creative writing, whatever their background. Join in, take part and expand your horizons...

## SMASHFESTUK

# SECRET FILM CLUB

**MONDAY TO FRIDAY 10AM – 4PM**

**VENUE: DEPTFORD LOUNGE: DROP IN**

# FREE!

Join the SMASHfestUK film club for a festival season of mystery films (but there might just be some volcanoes...). Check film times in Deptford Lounge.

**Secret  
Film  
Club**

# CRYOVOLCANO

THURSDAY 17TH 5 PM AND FRIDAY 18TH 4 PM

VENUE: THE ALBANY: GARDEN: DROP IN

**CRYO-VOLCANO WORLD RECORD!**

**FREE!**

## SUPER VOLCANO



We're building a 5 metre high cryovolcano and it's going to be erupting - shooting 1500 ping pong balls high into the sky above the Albany Theatre. Using liquid nitrogen at -196 degrees we'll be setting off a massive explosion that will rock the festival.

This will be an official world record attempt and you're invited to help make it happen! Be part of history by helping us build this behemoth. Then when it goes off you'll be a world record holder. Make sure you're there!

**MIDDLESEX UNIVERSITY WITH NATHAN ADAMS**

**EAR PLUGS WILL BE PROVIDED - IT'S GOING TO BE LOUD!**

# SMASHFESTUK SPECIAL PASS

MONDAY TO WEDNESDAY 10AM – 4PM

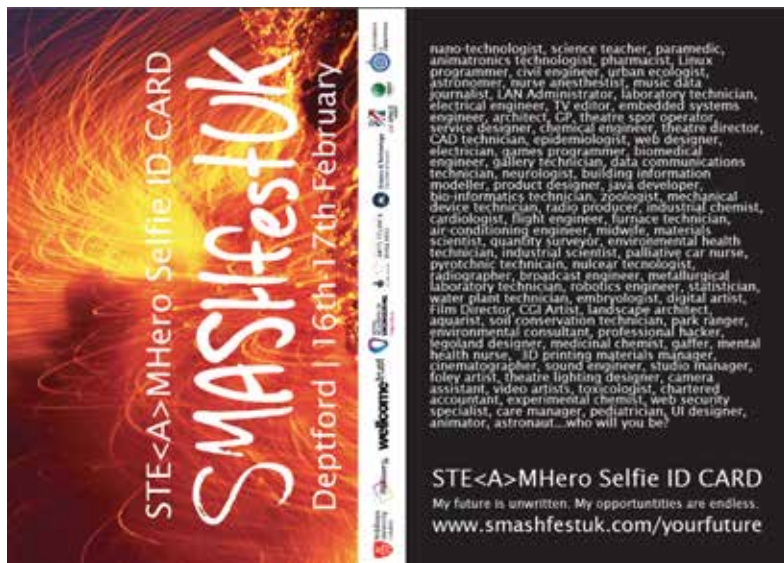
VENUE: DEPTFORD LOUNGE: INFORMATION DESK: DROP IN

THURSDAY & FRIDAY 10AM – 4PM

VENUE: THE ALBANY: FOYER : DROP IN

**FREE!**

Roll up! Roll up! To be part of the SMASHfestUK experience, we will be issuing every young visitor with their very own personalised ID card and SMASHfestUK Passport. If you manage to visit 12 separate SMASHfestUK events, you can win a FREE under-16 ticket to the Science Museum's brand new Wonderlab: The Statioil Gallery.



# SMASHFESTUK

## DR DEATH AND MEDI-EVIL MEDICINE

**THURSDAY: 10:30AM - 11:30AM**

**VENUE:THE ALBANY: RED ROOM**

**TICKETS: FREE - BOOKING ADVISED ON THE ALBANY  
WEBSITE**



What happens when volcanoes erupt and destroy hospitals? Medical care goes back to the dark ages!

Dr Death is back by popular demand, with his historically and scientifically accurate panto for children and other childish people.

Sneezes, wheezes, sickness and diseases are never welcome. But in the past, some of the treatments could be worse than the underlying illness. Join the time-travelling 'Doctor Death', Simon Watt, to see if he can 'cure' you.

**WARNING: THIS SHOW PROMISES BLOOD, GUTS, GORE AND A LOT MORE!**

**THURSDAY: 12PM - 1PM**

**THE ALBANY: RED ROOM**

**TICKETS: FREE - BOOKING**

**ADVISED ON THE**

**ALBANY WEBSITE**

**SMASHFESTUK**

# **SURVIVAL SCIENCE**

## **HUW JAMES**

In this interactive show Huw James takes a look at how to survive in the most extreme environments known to humans, including how to survive a volcanic eruption! Get hints and tricks that could save your life if you find yourself stuck in the wild. How to outrun lava flows, how to avoid that toxic ash cloud, and why you might need a potty in your survival shelter. Find out how modern textiles keep your body warm, how we can filter dirty water and eat insects to stay alive. Maybe one day you'll become a Survival Scientist!

## **SMASHFEST**

# **SPACE ADVENTURES**

## **HUW JAMES**

**THURSDAY 1:30PM-2:30PM**

**VENUE:THE ALBANY: RED ROOM**

**TICKETS: FREE - BOOKING ADVISED ON THE ALBANY WEBSITE**



The next giant leap for humankind is in our solar system. If we have to leave Earth then where do we go next? There are plenty of places in the solar system that hold the potential for life, but should we settle in one of those? Or should we look to the stars? This interactive show explores some of the more possible places for us to find life in the solar system and looks at where we should go, to explore, or when the Earth becomes uninhabitable.

Find out about the amazing oceans of Titan, the cryovolcanoes of Enceladus and what lies in the outer reaches of our home. Maybe then you'll be ready for a Space Adventure!

# SMASHFESTUK

# UTTERLY AMAZING VOLCANOES IN SPACE

## SHEILA KANANI

**THURSDAY 3PM-4PM**

**VENUE: THE ALBANY: RED ROOM**

**TICKETS: FREE - BOOKING ADVISED ON THE ALBANY  
WEBSITE**

Volcanoes aren't just found here on Earth. In this interactive talk "Saturn Sheila" (Dr Sheila Kanani of the Royal Astronomical Society) will take you on a journey to some of the most awe-inspiring, weird and wonderful volcanoes in our Solar System.

You may imagine space to be empty, filled with only silence and nothingness, but if you visit the other planets and their moons you'll find out that space volcanoes fill the Solar System with water, dust, sulphuric acid and liquid nitrogen. Some have strange arachnoid features, others spew glue like viscous lava, some could hold clues to the existence of extraterrestrial life! We will also recreate a stinking model of a volcanic eruption on one of Jupiter's moons; "Io" which was captured on camera for the first time ever, by the New Horizons space probe!

# SMASHFESTUK THE RAP AND FOLK SMASHUP

## KYLE EVANS & JON C

FRIDAY 10:30AM-11:30PM



What a musical treat to start the day! A full on rapping folk double-header! Prepare to laugh and be inspired as Kyle Evans and John Chase take to the stage! Who'd've thought pop culture and mathematics were such good friends? That musicians from Dylan to Drake were dropping maths references into their tunes? That Ian Curtis and Evariste Galois had so much in common? Enter folk mathematician Kyle Evans and his trusty guitar, here to take you on a comedic musical tour through some unexpected parallels between maths & pop. Expect fun for maths enthusiasts and novices alike.

Join BBC Bitesize science presenter and author John Chase as he performs his unique raps about science. Jon has entertained more than 100,000 people across the UK with his fun and informative raps. He has written raps for NASA, The BBC and Channel 4 amongst others. If you're into rap or science, this is not to be missed! Don't take our word for it, come see for yourself.



SMASHFESTUK

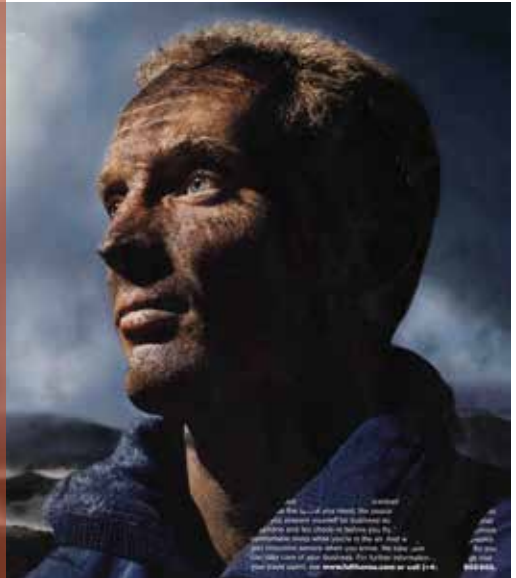
# HOW BIG IS YOUR BANG? DOUGAL EARTH

FRIDAY: 12PM-1PM

VENUE: THE ALBANY: RED ROOM

TICKETS: FREE - BOOKING ADVISED ON THE ALBANY WEBSITE

Are you fascinated by volcanoes? Captivated by cinder cones? Love lava lakes? Well this is the show for you! Find out everything you ever wanted to know and more about these flaming monsters in our midst. In a journey spanning the globe Professor Dougal Jerram AKA 'Dr. Volcano' will talk you through the earth's fiery giants. Using his extensive first hand experience of the world's magma monsters he conveys you through a world of bombs, lava and pyroclastic flows. With explosive demonstrations along the way this a show not to be missed!



# SMASHFESTUK

# THE SCIENTIFIC SECRETS OF DOCTOR WHO

**SIMON GURRIER**

**FRIDAY: 1:30PM - 2:30PM**

**VENUE: THE ALBANY: RED ROOM**

**TICKETS: FREE - BOOKING ADVISED ON THE ALBANY  
WEBSITE**



As you read this, you're on a huge, sticky rock called Earth, hurtling round a nuclear fireball at 67,000 miles per hour.

If that fact feels weird and unsettling you're more likely to remember it – the bits of our brains that encode long-term memory are linked to the bits dealing with emotion (and our sense of smell). And this odd memory-creating process affects our sense of the passing of time.

Lots of what we know about space, time and ourselves is surprising and counterintuitive. But if it's so peculiar, how did we puzzle it out? Unlike the Doctor in Doctor Who, we can't feel the turn of the Earth beneath us. We don't have a TARDIS to take us to other planets for a quick look round. But what does the Doctor do when he lands on an alien world where something strange is happening? He explores, looks for clues and asks awkward questions – sometimes getting in trouble with whoever's in charge...

Illustrated using clips from the TV show, Simon Guerrier shows how Doctor Who uses science to inform its unique style of storytelling – and just how close it has often come to predicting future scientific discoveries.

SMASHFESTUK

# THINK YOU CAN SURVIVE?

## JON WOOD

FRIDAY 3PM-4PM

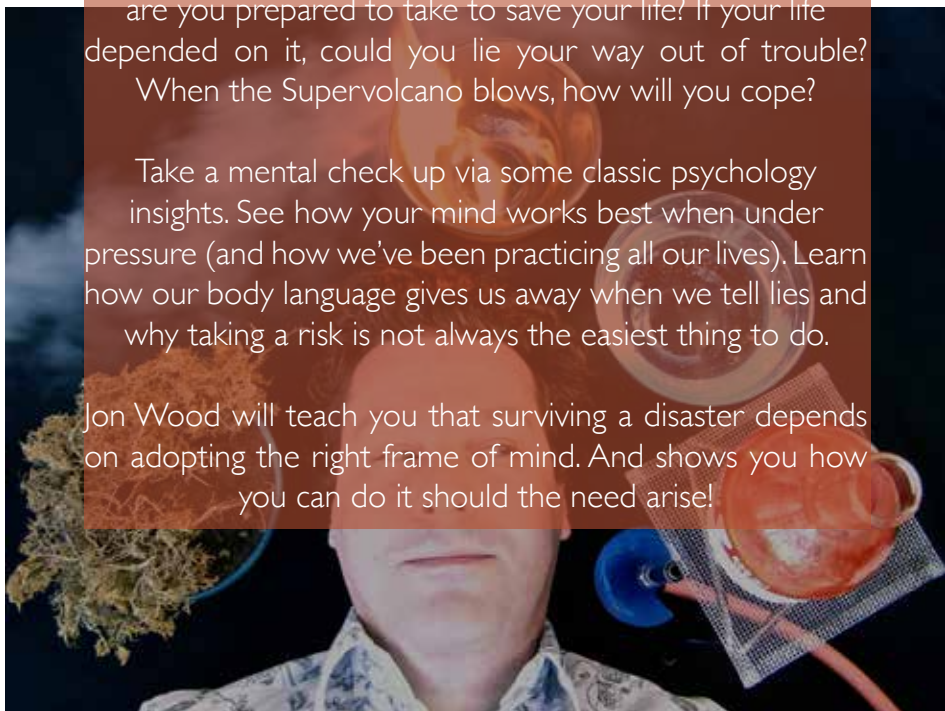
VENUE: THE ALBANY: RED ROOM

TICKETS: FREE - BOOKING ADVISED ON THE ALBANY WEBSITE

Having a volcano erupt around you is a stressful experience, but when the pressure is on, how do we rise above? Is it only the sharp-eyed that survive? How big a risk are you prepared to take to save your life? If your life depended on it, could you lie your way out of trouble? When the Supervolcano blows, how will you cope?

Take a mental check up via some classic psychology insights. See how your mind works best when under pressure (and how we've been practicing all our lives). Learn how our body language gives us away when we tell lies and why taking a risk is not always the easiest thing to do.

Jon Wood will teach you that surviving a disaster depends on adopting the right frame of mind. And shows you how you can do it should the need arise!



# SMASHFESTUK COMEDY CLUB 4 KIDS

THURSDAY & FRIDAY: 10AM - 11AM

VENUE: THE ALBANY: AUDITORIUM

TICKETS: FREE - BOOKING ADVISED ON THE ALBANY  
WEBSITE

Since 2005, the Comedy Club 4 Kids has been getting the best stand-ups and sketch acts from the international circuit to do their thing for an audience of children and their families... but without the rude bits! It's just like a normal comedy club, but it's on in the day, kids are allowed in, and keeping with the SMASHfestUK theme - some of the jokes are about Supervolcanoes. Hot stuff!



**'A HIGHLIGHT FOR CHILDREN IN RECENT YEARS, GIVING THEM A TASTE OF SOME OF THE BIGGEST NAMES IN COMEDY... WITH THE FUN, ROWDY FEEL OF A REAL COMEDY CLUB.'** THE GUARDIAN

**'THE PERFECT WAY TO ENTERTAIN THE WHOLE FAMILY.'** THREE WEEKS

# **RUPTURE** A NEW PLAY **ABOUT IDENTITY, LOVE AND VOLCANOES**

**THURSDAY: 12PM - 1PM**

**FRIDAY: 12:30PM - 1:30PM**

**RUPTURE BY REBECCA MANLEY.**

**DIRECTED BY MATT HARRISON.**

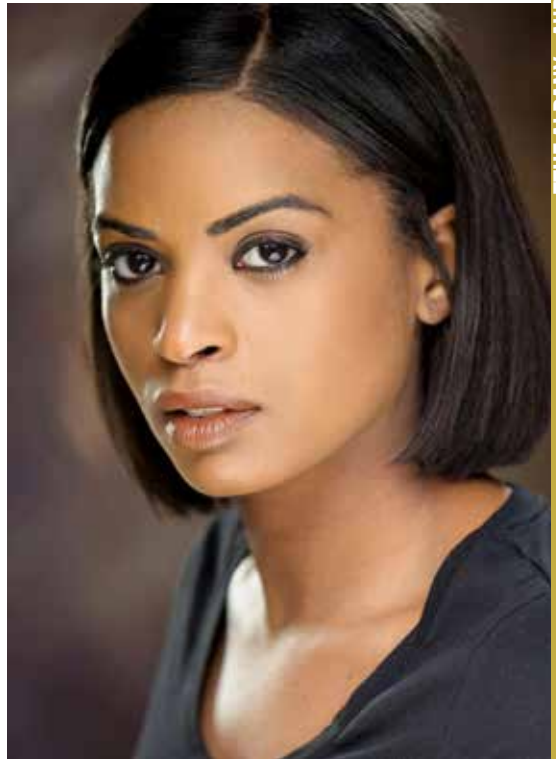
**THE ALBANY: AUDITORIUM**

**TICKETS: FREE - BOOKING ADVISED  
ON THE ALBANY WEBSITE**

Sora's life began in flight from Montserrat and the darkness of an island shrouded in volcanic ash. Now the world seems darker again, riven with fear.

London has always been Sora's home but she feels like it is changing. She has never visited Montserrat but she is wondering whether living in the shadow of a volcano is worse than living surrounded by people who are afraid of each other. Something is pulling her back.

SMASHfestUK's unique company of young actors tell Sora's story in a funny, moving and original new production.



## SMASHFEST

# SMASHUP

**THURSDAY: 2PM - 3PM**

**VENUE: THE ALBANY: AUDITORIUM**

**TICKETS: FREE - BOOKING ADVISED ON THE ALBANY WEBSITE**

A rip-roaring poetry SMASHup with family friendly action! Hosted by Laurie Bolger this gathering of fun, family-friendly interactive entertainment is for everyone! Take your seats to the sounds of Samba drummers and be enthralled!

Poetry Takeaway is back to take your ideas and spin rhymes of wit, wonder and wisdom. Making the mundane miraculous and the ordinary extraordinary. But as they muse to amuse, "Saturn" Sheila Kanini will spin malodorous volcanic tales of this world and beyond. Mars may be the magma master but which volcano is the solar system stinker?

Simon Watt is popping in to tell tales of termination and as for Nathan Adams, never give him a bouquet! He just freezes it and smashes it to pieces! Damage, destruction and demolition is the game with liquid nitrogen mayhem. What happens when you chill things to -196 degrees? Annihilation!

Interactive, anarchic and just plain fun, Laurie travels with you on a journey of rhymes, rhythm and rocks. Smash it, bash it and smell it, it's the SMASHfestUK way!



# PROJECT DOOMSDAY

**THURSDAY: 4PM - 5PM**

**THE ALBANY: AUDITORIUM**

**TICKETS: FREE - BOOKING ADVISED ON THE ALBANY WEBSITE**

Your phone vibrates in your pocket, illuminated with a message you had hoped you would never see...

You close your eyes, take a deep breath, and compute the information that an imminent threat to our existence has been identified. You press the button, grab your jacket, and head to the control room.

"Ladies and gentlemen, we are now a week into the volcanic eruption at Yellowstone National Park, and there are no signs of it cooling off, indications point to a large scale extinction event, the United States of America is being evacuated..."



**FEATURING EXPERTS: BILL MCGUIRE AND AMY DONOVAN**

**HOSTS: ROBIN AND PARTRIDGE**

**ANIMATIONS AND ILLUSTRATIONS: NESTOR PESTANA**

**MUSICAL SCORE: IMRAN AHMED**

Shrinking Space present Project Doomsday: Supervolcano - an interactive event where you, the audience react in real time to an intelligence briefing by expert scientists and performers. You have 60 minutes to avert catastrophe and make do-or-die decisions. Starting now...!

[WWW.SHRINKINGSPACE.COM](http://WWW.SHRINKINGSPACE.COM)

**FUNDRAISER! SMASHFESTUK PRESENTS:**

# WE DID START THE FIRE

**THURSDAY: 7:00PM - 9:30PM**

**VENUE: THE ALBANY: AUDITORIUM**

**TICKETS: SUGGESTED DONATION £10, OR PAY WHAT YOU FEEL! BOOK ON THE ALBANY WEBSITE**

**A DOUBLE-BILL OF VOLCANIC ENTERTAINMENT THAT'S STRICTLY FOR THE GROWN-UPS!**

## **PART 1 – THE DOOMSDAY PROJECT**

'Supervolcano' is an interactive immersive theatre event by acclaimed production team, Shrinking Space. What happens when a Supervolcano is about to erupt? Who makes the decisions that can save multiple lives? Or maybe cost them? In this case ... you! The Doomsday Project will take you on a thrilling theatre adventure. Can you save the world, or what is left of it?

## **BAR BREAK**

## **PART 2 – HELEN ARNEY**

Helen Arney (Festival of the Spoken Nerd) hosts a variety performance full of volcano related comedy, music, rap, hula hoops and explosions!

We've put together a line-up of fantastic performers for a SMASHfestUK first - an adult-only show, which is two shows for the price of one! Great value, and great entertainment for 2017's SMASHfestUK Fundraiser. This year we're heading off on tour to communities across the UK. Funds raised at this show will help us take SMASHfestUK to more people and ensure that it comes back for 2018.

Join us for an explosive evening and help share the volcanic love across the UK. This is your chance to help SMASHfestUK take to the road and keep running into 2018, with a suggested donation of £10, or pay what you can!



# FIRE MOUNTAIN SHOW

**FRIDAY: 2:30PM - 3:30PM**

**THE ALBANY: AUDITORIUM**

**TICKETS: FREE - BOOKING ADVISED ON THE ALBANY  
WEBSITE**

Fire! Fire! Fire! Time to burn down the house! How do you conclude a week of volcanic discovery and destruction? With a bang! Matt Ricardo, the gentleman juggler, is master of ceremonies leading you through an hour of fire and mystery.

The never-ending question, what goes first on the table, the crockery or the cloth? You may be surprised at the answer! Matt Ricardo amazes and entertains, juggling both objects and acts to give you a show to remember!

Thought you could Hula Hoop? Daisy Black is back! Lighting up the stage with her stunning performance taking the use of the hoop to an art form. Kyle Evans takes to the stage with a guitar and brain, mathematically delighting and amusing you till there are tears in your eyes!

And those tears may remain, as the fart show smells its way onto the stage. Detect the gas and hear the noise as our very own Esther Lie explores nether regions and emissions.

With all those whiffy gases around you better be careful with a flame! Nathan Adams returns to burn up the stage. Setting light to the contents of his lab there will be bangs, sparks and surprises. As well as all the colours of the rainbow! Not for the faint hearted or easily scared - but then again neither was the festival!

# SMASHFESTUK ESCAPE THE VOLCANO

**THURSDAY AND FRIDAY: ALL DAY**

**VENUE: THE ALBANY: YELLOW ROOM**

**TICKETS: DROP IN**

## FREE!

Can you escape the fiery jaws of the volcano? In this Crystal Maze type game, solve the puzzles, leap the gaps and take the dexterity challenges to see if you can think, jump and manipulate your way out of danger!

So you're stuck inside the volcano and it's going to blow. There's not much time left. Can you make it out? Do you have what it takes to pass the tests and survive? It's the game with the ultimate stake: your life!



# EXTREME ESCAPE ARTISTS

THURSDAY AND FRIDAY: ALL DAY

THE ALBANY: THE ORANGE ROOM

TICKETS: DROP IN

FREE!

MAP-MAKING

Can you work with the National Maritime Museum to help plot a route, bringing you and your families to safety? Find out about the Marshall Islands Sea Chart and how it can be used to save yourselves from the clutches of a

Supervolcano. You'll need to balance affected tube lines, predict the movement of crowds across the city and the possible ash cloud fall-out. Do you have what it takes to chart of the best route using the resources to hand?

# CSI VOLCANO


TICKETS: FREE - BOOKING ADVISED  
ON THE ALBANY WEBSITE

UNIVERSITY OF GREENWICH

THURSDAY AND FRIDAY: ALL DAY

VENUE: THE ALBANY: ORANGE ROOM

FREE!



You've found bones badly damaged and burned in the garden. Have they died as a result of the Supervolcano? Was it a pyroclastic flow that killed them? Did they suffocate from breathing in the ash cloud? Or was it something more sinister? The Greenwich University CSI team are here to help you find out the answers. Discover what really happened and whether it is just the Supervolcano you need to worry about...

# ROBOT RESCUE! ORLANDO MILLER

THURSDAY: ALL DAY

VENUE: THE ALBANY: ORANGE ROOM

TICKETS: DROP IN

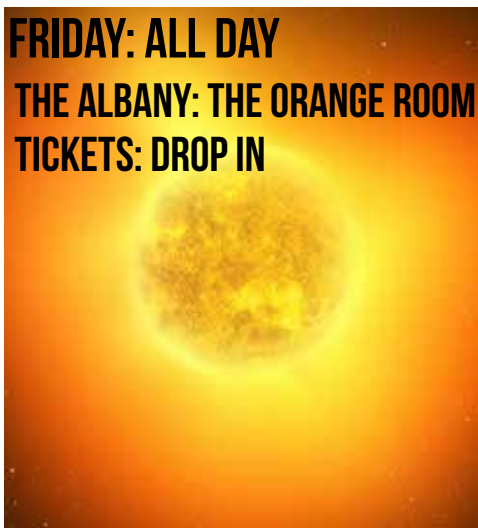
Want to code a robot to navigate different volcanic obstacles? Try and test different kinds of robot language and see if you can make it move where you want it! Orlando Miller speaks about the impact, for both good and bad, that robots can have in your lives.

# SUNSHINE POWERS THE WAY! ERIK SCHLOSS

FRIDAY: ALL DAY

THE ALBANY: THE ORANGE ROOM

TICKETS: DROP IN



# FREE!

The power supply has been wiped out. There's nowhere to plug in your phone - the sockets are destroyed, let alone there being any power. Are we back to candles and shouting? There is an answer: solar power! Can you get things going again with the power of the sun? Eric Schloss is here with kit and experiments so you can discover how!

# VR VOLCANO

MIDDLESEX UNIVERSITY

FREE!



Enter into a fiery domain, see the heat and flames. Will you be scorched, disappear into a lava lake, or make it out alive? Come and see this hot world and live to tell the tale...

it always helps if it's virtual

# VOLCANO DETECTION UNIT

UNIVERSITY OF GREENWICH

SPECTROSCOPY IN A SUITCASE

FREE!

How do you tell if a volcano is going to erupt? What testing can help you to find out? Spectroscopy is one method. It helps you test which chemicals are present in the world around us. Could these be the ones that indicate an imminent eruption? Could you be the first to know the truth? Are you the one to save Deptford?

# SURVIVAL VILLAGE

FREE!

MIDDLESEX UNIVERSITY PRODUCT DESIGN

Drop into our vibrant Survival Village, located in The Albany Garden, and find out how we can rebuild our homes and lives when a Supervolcano destroys our homes and normal lives! When disaster strikes everyone must pull together using the expertise available. Luckily there are volunteer engineers through the Royal Academy of Engineers' Ingenious programme available on site to aid with the reconstruction. And Transport for London apprentices will be there to engage and support in all your rebuilding efforts. Everyone is invited; everyone is an engineer, a scientist and an artist.

Let's make this happen!

#9%isnotenough

## VOLCANO PREDICTION CENTRE

Deptford Creek is bubbling with a dark, dangerous secret. Somewhere beneath the water, tiny cracks and fissures are appearing. Lava and gases from the imminent Deptford volcano are leaking out, warning where the volcano is likely to blow. Can you help figure out where it will erupt, so we can evacuate people away from the danger?!

FREE!  
EVACUATE  
SE8!

# PIPING PANIC!

## WATER SUPPLY

## PIPEWORK

**FREE!**

**YASMIN ALI AND MIDDLESEX UNIVERSITY**

Water water everywhere and it's all going down the sink... How do you get the water from where it is to where you need it? Piping! But there's no plumber. What are you going to do? Can you fix it to get the water where it's needed without losing any? There's none to spare. Have a go making your own plumbing system in our survival village with engineers on hand to help you do it!



**FREE!**

# HEAT YOUR HOME

**ALEX ZIVANOVIC AND MIDDLESEX UNIVERSITY**

You have little fuel, and it's getting cold. How do you keep warm and cook your food? What is the most efficient way using the little you have? Rocket stoves! Come make the fuel and see it burn! How do you build stoves that use fuel in the leanest way? Remember it doesn't grow on trees, there aren't any left! With soup available, come warm yourself...



# CLEAN WATER CHALLENGE WATER FILTRATION

**MICHAEL SULU, FIONA TRUSCOTT AND UCL**

**FREE!**

You've found water. At least that's solved. But you're only halfway there! Is it fit to drink? Poisoning yourself is not a great way to start your survival journey... What's the best way to make it safe? Can you make enough, and fast enough to supply the village? Or do you just take what you need?





# STORYTELLING EVENT:

# VICTOR THE VOLCANO

DOUGAL EARTH

## FREE!



Victor is an island in the Mediterranean Sea with high hopes. He wants to be a volcano and burst with fiery pride, but how? He must go on a journey of discovery to find out the secrets of how volcanoes dance and sing. This tale follows Victor on a colourful and explosive journey that introduces children to the wonderful world of volcanoes and where they are found. Author Dougal Jerram, a Professor in Volcanic Rocks, has used his expertise and passion to bring volcanoes to life for young children. The learning pages in the back of the book include a map of the world showing the continents where the volcanoes that are featured in the book are located, and 'Inside the Volcano' explains the internal workings of a volcano. A great story with a valuable educational message for children, and a useful guide for both parents and teachers.

# REBUILT!

## MIDDLESEX UNIVERSITY MATHS

# MATHS AND ENGINEERING STRUCTURES

# FREE!

The world needs rebuilding, but do you have the ability to do it? Can you use engineering and mathematical skills to save the world? Try out your solutions, test them and then try again. You can and must do it. The world is depending on you! MDX Maths will also be creating a rules-driven participatory maths artwork on the Garden patio.



# VOLCANO SURVIVAL CENTRE

UNIVERSITY OF GREENWICH

## PARAMEDICS AND FIRE SERVICE **FREE!**

So you've been caught in the heat and the smoke. You're not in a good way. Where do you go to get patched up? The Volcano Survival Centre. With top paramedics and burns experts find out how they respond in a crisis. They will make sure to get you at least functioning until the next disaster hits...

## **FREE!** FARM LAB



When the sky is dark and the land is barren what are you going to do for food? Scouring the supermarkets for the last remaining cans may be the short term answer. But what happens after that? Plants won't grow in the darkened skies. But fungi will. Learn how to grow your own and take some home with you. They don't take up much room!

# DEN-BUILDING

THE DEN EXPERIMENT

FREE!

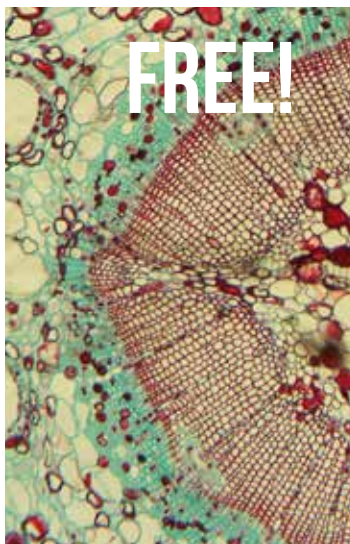
What are the most important things you need when an emergency has been declared? Well you need food, water, but also shelter.

Back for the third year Chris Harman is running the ever popular SMASHfestUK den-building activities. Can you build a shelter to survive the elements? Do you know what to do when there's only the odds and ends left over in a disaster area? Chris Harman is here with answers. Find out the best way to build your survival shelter and make sure you make it out SMASHfestUK 2017 alive!

# MASK DECORATING FREE! BOILER SUITS

With the air full of ash and thick with dust, how can you breathe safely? What can you do to stop your lungs being cut to ribbons or filling up with liquid cement... We have the masks for you. But how do you make sure you stand out? Make sure you decorate your mask in the brightest most visible way you can!

# MICROSCOPES



**FREE!**

Look around you. Can you see everything that is there? Really? Look closer. Maybe closer still. How can you look even closer? Well, we have the very thing. Ever looked through a microscope? Seen the unseen? We have mini-beasts to check out and crystals to see. Who knows what you will find in the world of the microscopic...

# NEON MOUNTAIN

## JIM PARKYN

**FREE!**

**THURSDAY & FRIDAY 10AM – 4PM**

**VENUE: THE ALBANY: CAFÉ: DROP IN**

As Lewisham's Supervolcano rumbles into action and Deptford disappears under a cloud of volcanic ash, join animation artist Jim Parkyn and put yourself in the story. Model a 3D self-portrait out of glowing clay and watch as an animated film of the eruption, starring your figure, grows before your eyes.



**AGE RANGE: SUITABLE FOR AGES 5+**

**CHILDREN MUST BE SUPERVISED BY PARENTS/CARERS AT ALL TIME.**

# STONE EXPLORERS

FRIDAY 2PM

RUTH SIDDALL

VENUE: MEET AT THE ALBANY CAFE

TICKETS: FREE - BOOKING ADVISED ON THE ALBANY WEBSITE



There are mysteries and tales in the buildings that surround us. Ruth Siddall takes you on a walking tour of the paths and buildings of Deptford. She'll be speaking about rocks found there and their formation. You may be surprised to find how close some of Deptford may have come to volcanoes. And how far some of the rocks that make up this part of South East London may have travelled! Book quickly as there are only 20 places.

# VOLCANOLOGISTS

## FREE!

Can you spot the volcanologist? What does one look like? We have two per day wandering the cafe and foyer ready to answer all your questions. What is it like to stand on a volcano? What is the most dangerous place you have visited? How smelly does it get? Find out and view samples they have brought back from their travels. One day this could be you...

# Partners & Sponsors



# Supporters

We wouldn't exist without the belief & generosity of our SMASHfestUK supporters, sponsors & partners.

A huge thank you to you all!

## Year 1 Supporters:

*Karl Griffiths, Peter Mercer, Leah Griffiths, Wendy Meharg, Matt Jones, Richard Watts, Kay Keith, Nik Butler Ruth Kind, Gary Povey, Ben Arent, Michael Silverberg, Alvin Munzi, Claire Ayeni, Jonathan Tew, Yasmin Ali, Olly Moore, Andy Watson, Trevor Haldenby, Philippa Barr, Michail Raasch, Madeleine Kelly, RazvainDanaila, Emily James, Thomas Booth*

## Supporting Organisations:

*Royal Observatory Greenwich, National Maritime Museum, Lewisham Young Advisors, Lewisham Young Mayors Office, GLYPT, Albany Young Creatives, Natural History Museum, Physiological Society, Google, Royal Society of Chemistry, LifeLab Southampton, Science Museum, Horniman Museum, Academy of Medical Sciences, Bournemouth University, Royal Statistical Society*

SMASHfestUK

SUPERVOLCANO 2017

smashfestuk.com

