

Fusion Strategies for Collaborative Spectrum Sensing

Kamran Arshad and Klaus Moessner
Centre for Communication Systems Research (CCSR),
University of Surrey, United Kingdom
Email: K.Arshad@surrey.ac.uk



24 June 2010

2010 ERRT Workshop
Mainz Germany

1



Outline

- Objective
- Motivation
- Spectrum Sensing
- Collaborative Spectrum Sensing
 - Hard decision based fusion optimisation
 - Genetic Algorithms based soft decision fusion optimisation
- Conclusions



24 June 2010

2



Outline

- Objective
- Motivation
- Spectrum Sensing
- Collaborative Spectrum Sensing
 - Hard decision based fusion optimisation
 - Genetic Algorithm based soft decision fusion optimisation framework
- Conclusions



24 June 2010

3



Objective

"To optimise performance of collaborative spectrum sensing."



24 June 2010

2010 ERRT Workshop
Mainz Germany

4



ROS Outline

- Objective
- **Motivation**
- Spectrum Sensing
- Collaborative Spectrum Sensing
 - Hard decision based fusion optimisation
 - Genetic Algorithm based soft decision fusion optimisation framework
- Conclusions

24 June 2010 5 UNIVERSITY OF SURREY

ROS Motivation for this research...

```

    graph LR
      A[Demand for Spectrum] --> B[Limited Resource]
      A --> C[Crowded]
      A --> D[Bandwidth hungry Services]
  
```

- People/users do not need spectrum, they need **capacity** and **adequate quality communication** means!
- **Technology** converts the limited spectrum into capacity

24 June 2010 2010 ERRT Workshop Mainz Germany 6 UNIVERSITY OF SURREY

ROS Motivation - ctd.

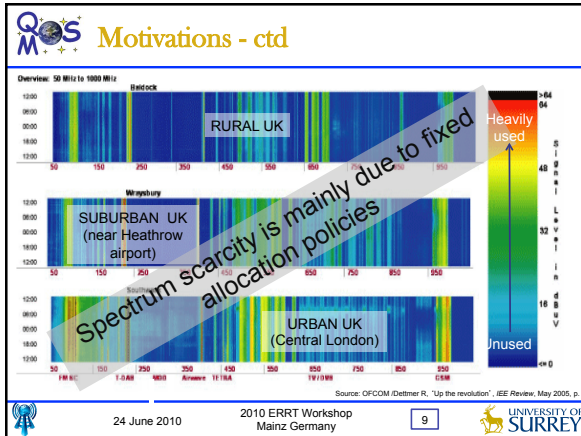
- Possible solutions
 - Use higher spectrum (higher frequency bands)
 - Do fundamental physical limits allows us to do so?
 - Increase modulation efficiency or spectrum efficiency
 - Can we go beyond Shannon capacity?
 - MIMO techniques
 - How much spectrum can be squeezed through more efficient antenna techniques?
 - Cognitive Radio exploiting White Spaces?

24 June 2010 2010 ERRT Workshop Mainz Germany 7 UNIVERSITY OF SURREY

ROS Motivation - ctd.

- What is a White Space (WS)?
 - Unoccupied spectrum bands at a particular location and time
 - Exists even in urban areas (depending on location and time)
- Where does WS come from?
 - Fixed and rigid spectrum allocations
 - Terrain signal blockage
 - Uneven demand for spectrum
 - TVWS emerge due to the digital switchover in Britain (Europe, USA and some other countries as well)
- How to utilise them?
 - Cognitive Radio by performing spectrum sensing

24 June 2010 2010 ERRT Workshop Mainz Germany 8 UNIVERSITY OF SURREY



Cognitive Radio as "enabler"

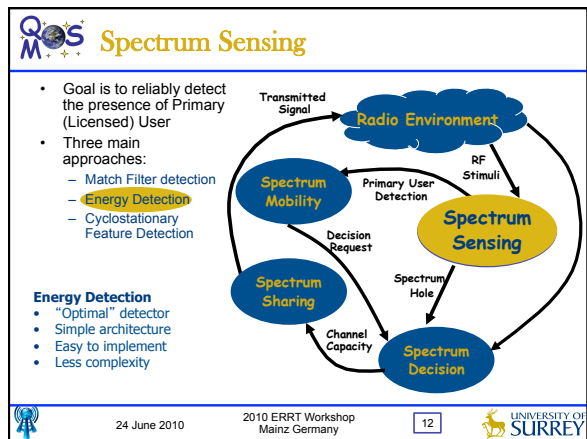
- Many definitions exist
- In simple words:
 - An intelligent radio that makes decision for its operating frequency, modulation scheme, transmitting power etc based on factors like:
 - Current location
 - Policies at that particular location
 - Time of the day and available white spaces
 - Negotiations with other opportunistic devices

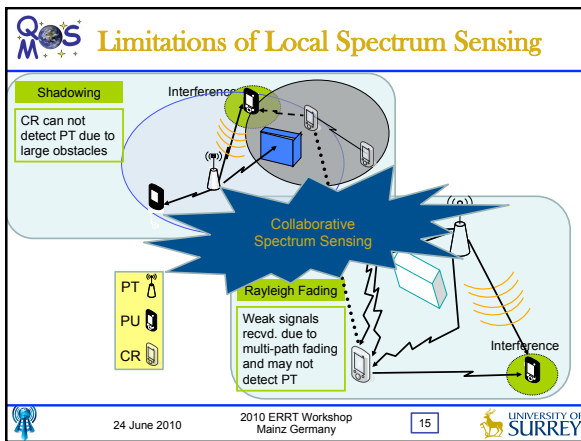
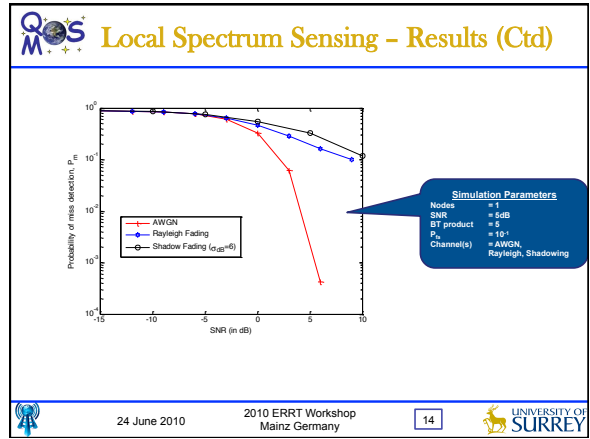
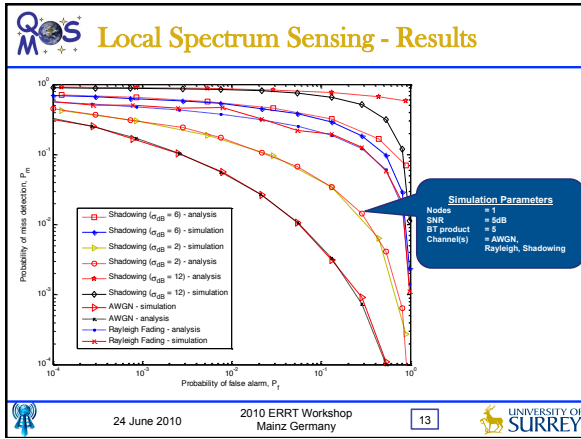
24 June 2010 2010 ERRT Workshop Mainz Germany 10 UNIVERSITY OF SURREY

Outline

- Objective
- Motivations
- Spectrum Sensing
- Collaborative Spectrum Sensing
 - Hard decision based fusion optimisation
 - Genetic Algorithm based soft decision fusion optimisation framework
- Conclusions

24 June 2010 2010 ERRT Workshop Mainz Germany 11 UNIVERSITY OF SURREY





- ### Outline
- Objective
 - Motivations
 - Spectrum Sensing
 - Collaborative Spectrum Sensing**
 - Hard decision based fusion optimisation
 - Genetic Algorithm based soft decision fusion optimisation framework
 - Conclusions
- 24 June 2010 16 UNIVERSITY OF SURREY

Collaborative Spectrum Sensing (CSS)

- A central unit (fusion centre) collects sensing information, identifies the available spectrum, and broadcasts this information to other cognitive radios
- Use of control channels to share spectrum sensing result
- Nodes may send 1-bit decision (Hard decision - HDC) or observation (Soft decision - SDC) to fusion centre
- Why collaboration?
 - Significantly decreases the probabilities of mis-detection and false alarm
 - Helps solving hidden primary user problem
 - More effective when collaborating users observe independent fading or shadowing

24 June 2010 2010 ERRT Workshop Mainz Germany
17

Performance of CSS - HDC

24 June 2010 2010 ERRT Workshop Mainz Germany
18

Outline

- Objective
- Motivations
- Spectrum Sensing
- Collaborative Spectrum Sensing
 - Hard decision based fusion optimisation
 - Genetic Algorithm based soft decision fusion optimisation framework
- Conclusions

24 June 2010
19

Optimum Fusion for HDC

- Is the “OR” fusion rule superior in all cases?
- Three different scenarios are considered:
 - Case 1
 - All users have similar mean SNR
 - Case 2
 - Half of the users have higher mean SNR than other half
 - Case 3
 - When only one user has high mean SNR
- Decision Fusion Rule
 - Voting, OR, AND, 1-user rule
- Analytical formulation and Monte-carlo simulations were carried out to find optimal fusion in HDC

24 June 2010 2010 ERRT Workshop Mainz Germany
20

Analytical Formulation - HDC

$$y_i = \begin{cases} \sum_{j=1}^M D_{ij} \geq K, & ; \mathcal{H}_1 \\ \sum_{j=1}^M D_{ij} \leq K, & ; \mathcal{H}_0 \end{cases}$$

M = Total number of users
 D_{ij} = 1-bit decision of i^{th} user

Global probability of detection and false alarm is given as,

$$Q_d = R(D) \prod_{S_0} (1 - P_0^i) \prod_{S_1} P_1^i$$

$$Q_f = R(D) \prod_{S_0} (1 - P_0^i) \prod_{S_1} P_0^i$$

P_0 and P_1 are local probabilities
 S_0 = group of users decided signal is absent
 S_1 = group of users decided signal is present

$R(D)$ is decision fusion rule at fusion centre and defined as,

$$R(D) = \begin{cases} 1 & \text{(PU present) if } \sum_{i=1}^M D_i \geq K \\ 0 & \text{(PU absent) if } \sum_{i=1}^M D_i < K \end{cases}$$

For 1-user rule

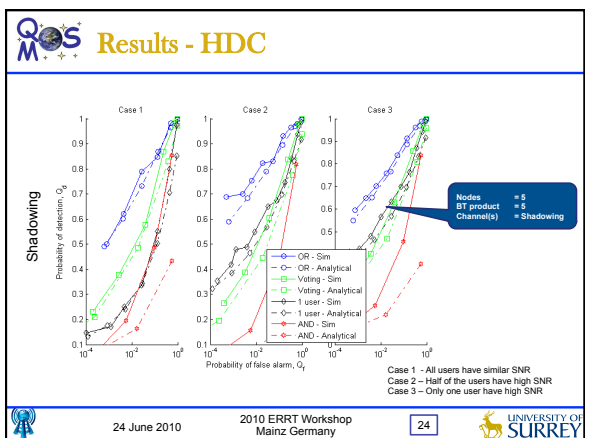
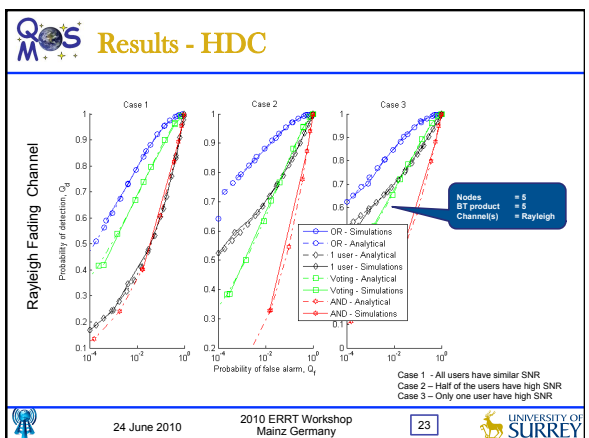
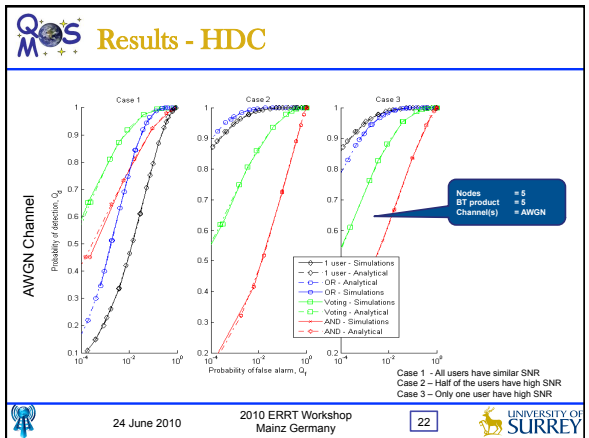
$$R(D) = \begin{cases} 1 & \text{if } D_i = 1 \\ 0 & \text{otherwise} \end{cases}$$

Where i^{th} user is chosen as,
 $i = \arg \max \{ \gamma_j \}$

24 June 2010

2010 ERRT Workshop
Mainz Germany

21



QOS Outline

- Objective
- Motivations
- Spectrum Sensing
- Collaborative Spectrum Sensing
 - Hard decision based fusion optimisation
 - Genetic Algorithm based soft decision fusion optimisation framework
- Conclusions

24 June 2010 25 UNIVERSITY OF SURREY

QOS Soft Decision Combining (SDC) Framework

Problem
How to fuse local observations of cognitive radios at fusion centre to decide globally the existence of licensed user?

Solution Approach
For a given channel conditions and targeted probability of false alarm, weights are assigned to the secondary user observations in such a way that it maximises global probability of detection. Optimum weights are calculated using genetic algorithms.

24 June 2010 2010 ERRT Workshop Mainz Germany 26 UNIVERSITY OF SURREY

QOS Problem definition - SDC

- Maximise global probability of detection at the fusion centre, considering
 - Two scenarios (users with same mean SNR and with different mean SNR values)
 - Noisy reporting channels with channel gains
- Global probability of detection can be defined as $Q_d = Q(f(w))$, where $f(w)$ is given by

$$f(w) = \frac{\sqrt{\text{Var}[y_c/H_0]}Q^{-1}(Q_f) + E[y_c/H_0] - E[y_c/H_1]}{\sqrt{\text{Var}[y_c/H_1]}}$$

$$= \frac{Q^{-1}(Q_f)\sqrt{w^T A w} - w^T [\text{diag}(g)\text{diag}(\sigma)]}{\sqrt{w^T B w}}$$

minimise $f(w)$

where matrices **A** and **B** are defined as,
 $A = 2N \text{diag}^2(g)\text{diag}^2(\sigma) + \text{diag}(\delta)$
 $B = 2(N I_M + 2\text{diag}(\gamma))\text{diag}^2(g)\text{diag}^2(\sigma) + \text{diag}(\epsilon)$

st. $\|w\|_2 = 1$ and $w_i > 0 \forall i \in \{1, 2, 3, \dots, M\}$

24 June 2010 2010 ERRT Workshop Mainz Germany 27 UNIVERSITY OF SURREY

QOS Proposed weighted framework

24 June 2010 2010 ERRT Workshop Mainz Germany 28 UNIVERSITY OF SURREY

Why genetic algorithm?

- Very useful for complex and loosely defined problems.
- Quickly can scan a vast solution set.
- Global optimisation technique.
- Does not have to know any rules of the problem.
 - It works by its own internal rules.
- Supports parallel processing.
 - Multiple solution capability

24 June 2010 2010 ERRT Workshop Mainz Germany 29 UNIVERSITY OF SURREY

Simulation results - SDC

24 June 2010 2010 ERRT Workshop Mainz Germany 30 UNIVERSITY OF SURREY

Simulation results - SDC

AWGN Rayleigh

OPT = GA based optimal combining
 PC = Proportional Combining
 EGC = Equal Gain Combining


Case 1 - All users have good reporting channels
 Case 2 - All users have bad reporting channels
 Case 3 - Only two users have good reporting channels

24 June 2010 2010 ERRT Workshop Mainz Germany 31 UNIVERSITY OF SURREY



Outline


- Objective
- Motivations
- Spectrum Sensing
- Collaborative Spectrum Sensing
 - Hard decision based fusion optimisation
 - Genetic Algorithm based soft decision fusion optimisation framework
- Conclusions


24 June 2010 2010 ERRT Workshop Mainz Germany 32 UNIVERSITY OF SURREY

 **Conclusions**



- Collaborative spectrum sensing improves sensing performance significantly
- Different position (mean SNR) of users have significant effect on the performance of collaborative spectrum sensing
- Optimum fusion rule must consider mean SNR values of users in both cases i.e. HDC and SDC
- Proposed Genetic Algorithm based weighted collaborative spectrum sensing improves sensing performance
- Proposed scheme requires knowledge about SNR of each user as well as channel conditions
 - Larger reporting channel bandwidths are required
 - Topic of our current research


 24 June 2010 2010 ERRT Workshop Mainz Germany 33 

 **Acknowledgments**



This work was performed in project E3 and QoSMOS which have received research funding from the Community's Seventh Framework programme. This paper reflects only the author's views and Community is not liable for any use that may be made of the information contained therein. The contributions of colleagues from E3 and QoSMOS consortium are hereby acknowledged.

 24 June 2010 2010 ERRT Workshop Mainz Germany 34 



Questions ???

